

## Authorised bisect of the 1860 1d



1860-70 watermark Pineapple 1d.

Jamaica did not issue a  $\frac{1}{2}$ d stamp until 1870. However, in 1861 the "book post" (printed matter) rate was set at  $\frac{1}{2}$ d.

*For the greater convenience of persons availing themselves of the facilities afforded by the book post, and also for the pre-payment of newspapers forwarded within the Colony, His Excellency the Governor, in Executive Committee has been pleased to authorise the recognition of one-half of the present Penny Postage Label in prepayment of the Half Penny Rate of Postage. The Label must be divided diagonally so as to render the Half Penny triangular, the only shape in which it will be recognised in pre-payment of postage.*

*(Signed) Alex. Brymer, Postmaster for Jamaica.*

*20th November 1861*



March 1865 watermark Pineapple 1d bisected.

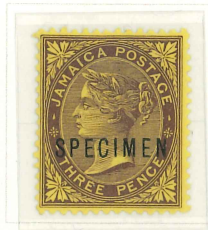
Posted March 12th 1866 from Malvern (cds on reverse) to Spanish Town with transit cds from Mandeville (reverse) and Goshen. Malvern obliterator (A50) cancelled the stamp. Many of the bisects that have survived, like this one, are on forms addressed to Mr Feurtado, Chief Clerk in the Provost Marshal's Office at Spanish Town. He wrote in April 1902 that these had been stored at the Supreme Court Office from 1872, but had "lately been disturbed by stamp collectors".

1872 6d Plate Proof



Plate proof from upper left corner of lower left pane on thin glazed card (i.e. unwatermarked).  
Overprinted 'CANCELLED' (similar to Samuel D7, but slightly larger at 14 x 2.5mm).

Laureated Head 1909-11 New colours, Specimens



10.3.10



21.9.10



3.10.11



19.11.09



21.9.10



21.9.10



Indication of sheet layout.

Laureated Head 2s, 5s

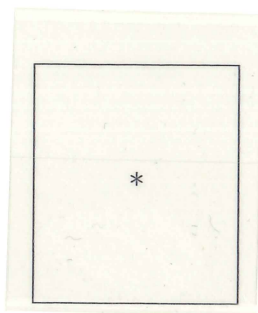
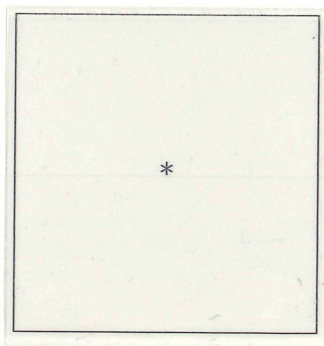


plate proof



die proof



1875



1875

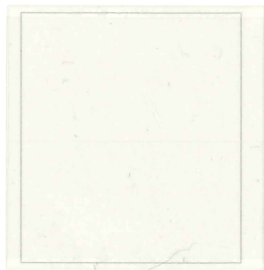


1897



1897

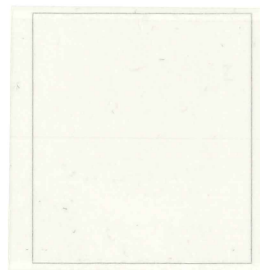
Laureated Head, 1s dollar variety



Pine



CC



CA



CA



Jamaica, S.G. 24a.

"\$" for "S" in "SHILLING".

Very fine used with  
excellent colour and perfs.

With Certificate.

Scarce and Attractive.

Cat. £450 £295

**DAVID BRANDON**

EXPERT COMMITTEE

WELLINGTON HOUSE, GUILDFORD, SURREY GU3 1DE.

Date 23-4-1998

The Committee is of the opinion that the

Jamaica 1897 (March) 1/- brown,  
Wmk. Brown CA, Perf 14, "\$" for "S"  
in "SHILLING" (S.G. 24a) used is  
genuine.



Page  
Jim Belk  
David Brandon



Stock No.

P190003175  
GS

# STANLEY GIBBONS LIMITED

399 Strand London WC2R 0LX

Tel: 020 7836 8444 Fax: 020 7836 7342 [www.stanleygibbons.com](http://www.stanleygibbons.com)



BY APPOINTMENT TO  
HER MAJESTY THE QUEEN  
STANLEY GIBBONS LTD  
LONDON



BY APPOINTMENT TO  
HER MAJESTY THE QUEEN  
STANLEY GIBBONS LTD  
LONDON  
PHILATELISTS

Code

SG 26  
Proof

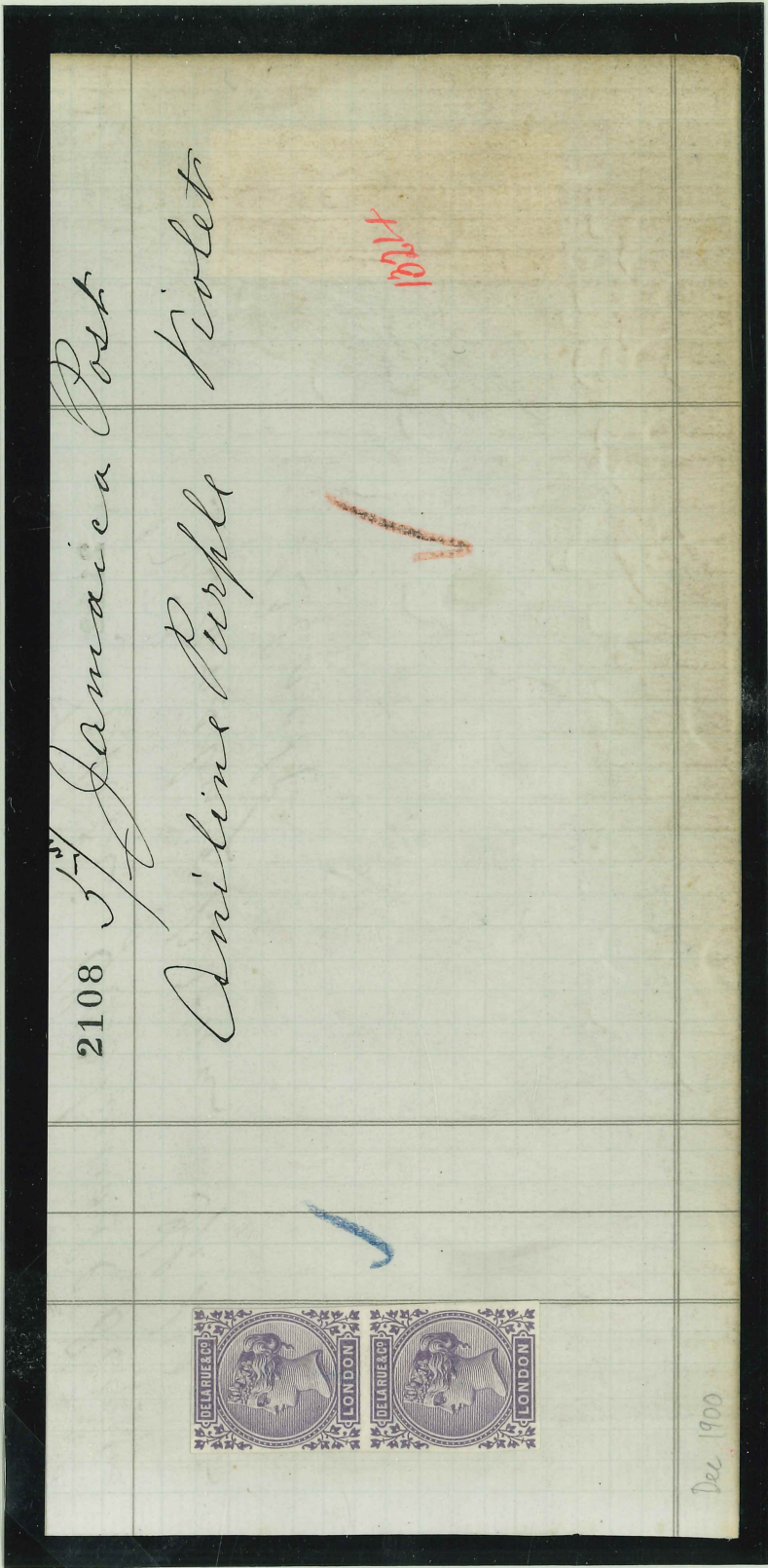
£120.00

JAMAICA

c.1896 piece from the DLR ink recipe book for the 5/- lilac, the specified colour of 'Violet' being actually made from 'Aniline Purple' ink, with a vertical pair of DLR dummy stamps in left margin as colour standards. Lower right corner with minor soiling, still an attractive and unique archival record.



Stock No.



Laureated Head, 1s unlisted plate flaw



No. 36144

Two li

**The British Philatelic Association, Limited.**

**EXPERT COMMITTEE**

3 BERNERS STREET

LONDON, W.1.....6.3.1959.

*The Committee is of the opinion that the*

*Jamaica. 1883-97. 1/- chocolate variety  
plate flaw near "s" of "SHILLING"  
used is genuine.*



*Rosenthal  
A. C. P. Smith  
J. C. P. Smith  
Arthur H. Jones*

Laureated head, watermark Crown CA, 1d Rose



The more common deep shade, showing marginal inscriptions.

Laureated Head, 4d Pine "Penoe" for "Pence"



Pine

Possible plate flaw on 4d: "PENOE" for "PENCE".  
Surface abrasion may enhance that appearance. Ex Sutcliffe



"While we cannot ascribe to this the consistency of the similar variant on early Mauritius, we know that Derek was very proud of it, and hope its new owner will be, too." - Simon Goldblatt, Circle Auctioneer

Crown CA watermark ½d issued February 1885

