

George VI Pictorials - Plate proofs



1938

Plate proof on watermarked and gummed paper



1938

Plate proof, no watermark



1951

Plate proof on lined paper, no watermark

George VI Pictorials



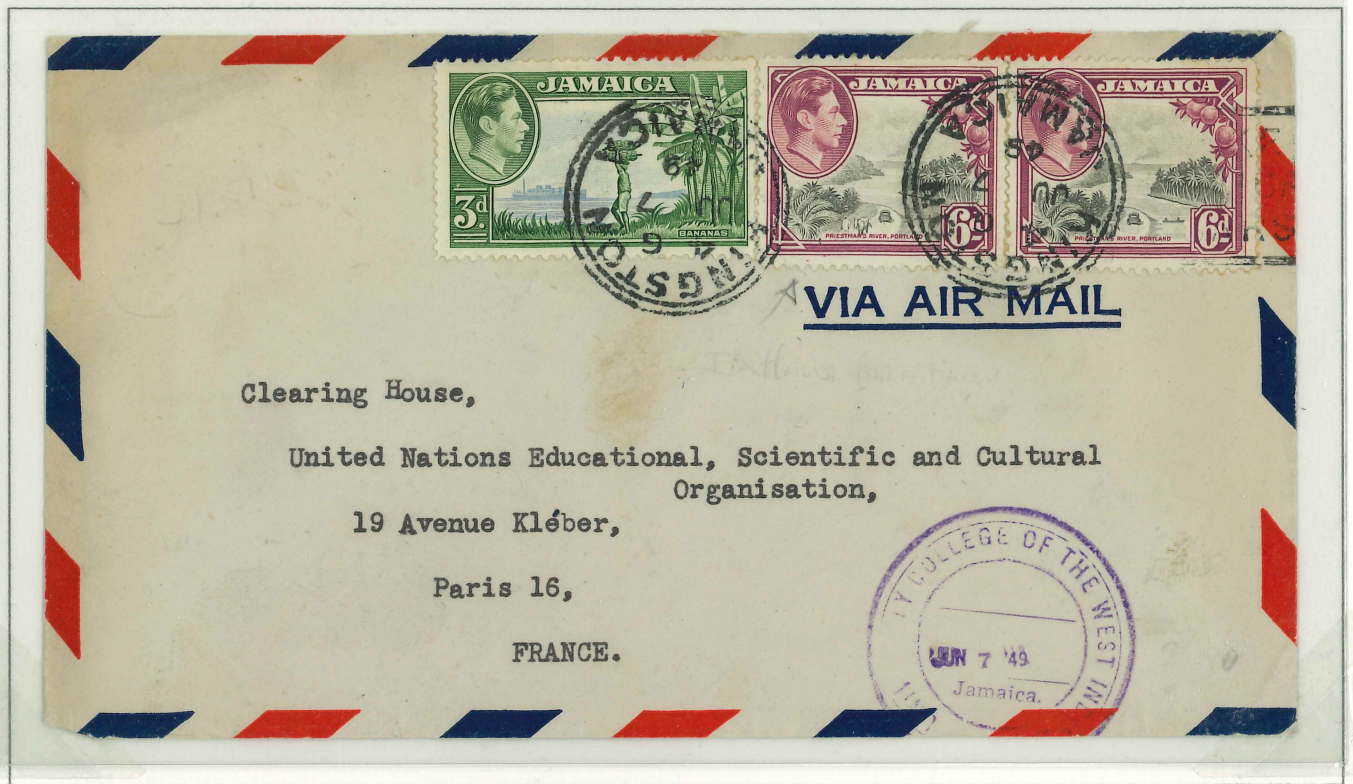
1949



1952



University College of the West Indies handstamp; 6d Exhaust Pipe flaw



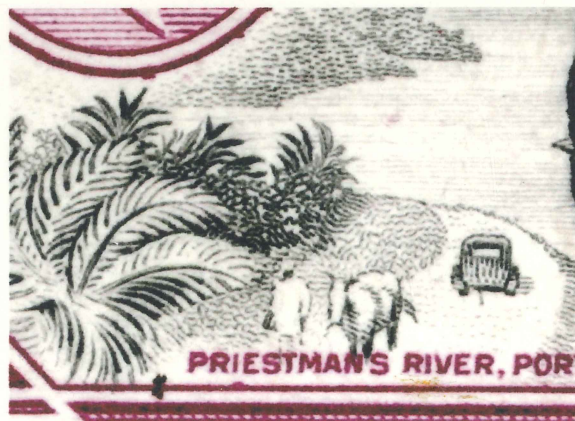
Clearing House,

United Nations Educational, Scientific and Cultural
Organisation,

19 Avenue Kléber,

Paris 16,

FRANCE.



Airmail to France, Kingston double-circles 7th June 1949.

Additional University College of the West Indies datestamp, listed by Proud as a temporary office
in the Senate House, Mona, 27th November 1948 until 14th December 1951.

Left hand 6d stamp has the Exhaust Pipe flaw (shown at five times magnification).

Temporary authorised bisect, Hopeton April 1948

Temporary shortage of 1½d stamps In 1948, the rate for a local letter up to 2oz was 1½d, but at Hopeton, that stamp ran out. The postmistress telephoned Kingston for instructions, and was told to bisect 3d stamps. Only a handful of covers were created before fresh supplies of the 1½d arrived.



1938-52 1½d

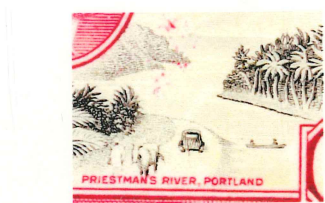


1938-49 3d Bananas



Bisected 3d on cover to Lucea, tied by Hopeton April 24 1948 datestamp.

George VI Pictorials 6d



Exhaust pipe flaw (above) and Spotlight flaw



George VI Pictorials - Plate scratches



Short horizontal line in the oval frame of the portrait, just below eye level

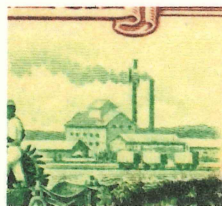


Faint vertical line through the left value tablet

George VI Pictorials



Used



Chimney Flaw

1946 Victory



| | | |
|---|---|---|
| 1 | 2 | 3 |
| 4 | 5 | 6 |
| 7 | 8 | 9 |



[2] R6C5 Dot to right of main tower



[4] R7C4 Dot to right of main tower

1946 Victory



| | | |
|---|---|---|
| 1 | 2 | 3 |
| 4 | 5 | 6 |



[1] R1C4 Dot to right of main tower

1946 Victory



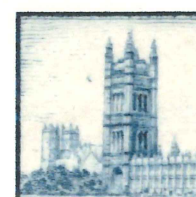
| | |
|---|---|
| 1 | 2 |
| 3 | 4 |



[1] R7C1 Buoy in river above left rowboat



| | | |
|---|---|---|
| 1 | 2 | 3 |
| 4 | 5 | 6 |

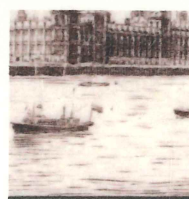


[6] R5C3 Dash to left of main tower

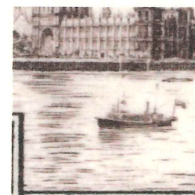
1946 Victory



| | |
|---|----|
| 1 | 2 |
| 3 | 4 |
| 5 | 6 |
| 7 | 8 |
| 9 | 10 |



[2] R1C2 Dot in river to right of flag



[8] R4C2 Small dot in river above main mast



[9] R5C1 Horizontal line to right of main tower

1946 Victory



| | |
|---|---|
| 1 | 2 |
| 3 | 4 |
| 5 | 6 |
| 7 | 8 |



[1] R7C3 Dot to right of main tower



[2] R7C4 Small dot between 'A' and 'I' of 'JAMAICA'

New Constitution - Photographic Trial Proofs



1½d



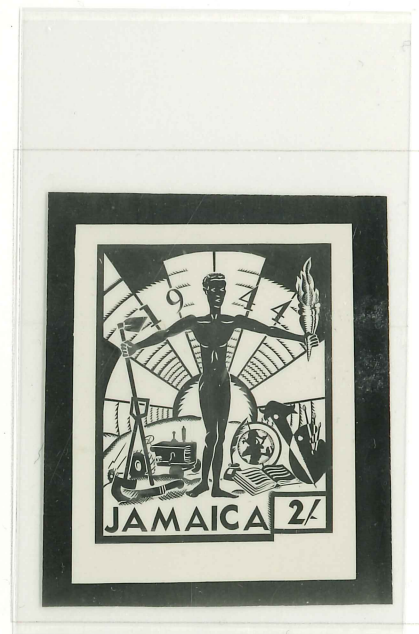
2d



3d



4½d



2s



5s

Photographic proofs by Claude DeSouza.

Designs are close to the issued stamps. However, the portraits of the King in the issued stamps face to the front, rather than the side.

The issued 2s added the phrase 'NEW CONSTITUTION' below the word Jamaica, and the value tablet was aligned with the bottom frameline.

New Constitution - Imprint Blocks



1½d Line



1½d
Comb



2d Line



2d Comb

New Constitution - Imprint Blocks



3d Line



3d Comb



4½d Line



4½d
Comb

New Constitution - Imprint Blocks



2s Line



5s Line



10s Line

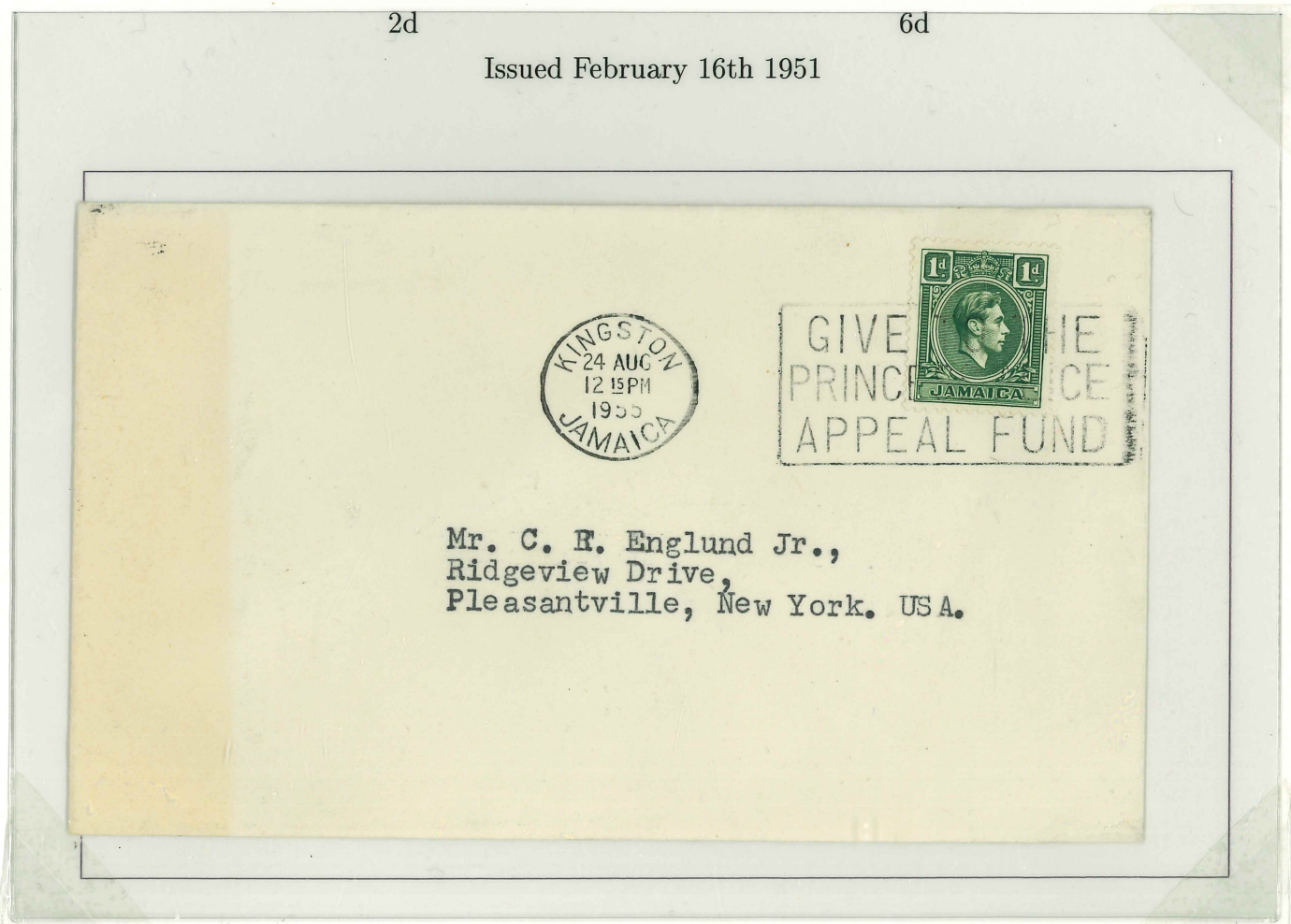
University of the BWI



2d

6d

Issued February 16th 1951



Princess Alice appeal fund slogan postmark in use August 4th - 31st, 1955



2

2

Watkinson & Sons Limited, London Wall, London, E.C.





THOMAS DE LA RUE & COMPANY, LIMITED.