



ID 571-574



Sors Dehroy Hermano

C. Guzman

MEXICO
Medio Real, 1856

GUADALAJARA

ID519

Scott #1a

Celis Cano #1ts

- double transfer at top
- Scott x 2

Color - Philatelic Foundation IV-16-01
- moderate greenish blue
- Munsell number 6B 3.6/3.2

District Overprint - GUADALAJARA, 22.5x2.25 between two dots
- in black
- reading down at right
- Fayolle Type I; not listed by Celis Cano or Odfjell
- Schatzkes value 1

Cancellation is illegible

Paper - Plain wove, vertical

Comments

I-10. Double transfer at top. A second pennant frame line shows from the left to over the top of the S of CORREOS.

I-10. There is an arcing scratch through the first O of CORREOS and down to the top of the value tablet.

I-10. There is another arcing scratch from the top of Hidalgo's forehead through the CO of MEJICO and the top right ribbon.

I-10. There is a blob 1.2mm above the top left ribbon and a 0.3mm dot 1.0mm left of the line just above the value tablet.

Valuation

Scott 1a, used, x 2

Conclusion

This stamp is I-10



MEXICO —ELMHURST PHILATELIC
SOCIETY INTERNATIONAL

No 16939

April 28, 1996

THE MEPSI EXPERT COMMITTEE
P.O. Box 26644, Austin, TX 78755-0644

We have examined the enclosed Mexico,
1856, 1/2 real blue, Guadalajara district
overprint, (Scott No. 1), used, tied to
piece by a Tapalpa cancel (Schatzkès No.
457).....

submitted by Omar Rodriguez

of which a photograph is attached and are of the opinion that
it is genuine in all respects.....



For The Expert Committee

Jan Stunt
Administrator

MEXICO
Medio Real, 1856

GUADALAJARA

ID1359

Scott #1a

Celis Cano #1

- dark blue
- Scott x 1

Color - Philatelic Foundation V-15-11
- grayish purplish blue
- Munsell number 7PB 3.8/4.2

District Overprint - GUADALAJARA, 20x1.5 without dots
- in black
- reading up at right
- Celis Cano and Odfjell Type III; not listed by Fayolle
- Schatzkes value 1

Used at Tapalpa

Cancellation

CORREOS TAPALPA in double oval with ornaments at the sides
- in black
- Schatzkes #457
- Rarity factor 15
- Not listed by Yag/Bash
- Not listed by Liera/Backal



Paper - Cannot be determined

Valuation

Scott 1a, used, x 15

Conclusion

The plate position of this stamp on piece is unknown.

MEXICO
Medio Real, 1856

GUADALAJARA

ID1187

Scott #1

Celis Cano #1vc

- blue

- Scott x 1

Color - Philatelic Foundation V-14-21

- moderate blue

- Munsell number 3PB 4.5/5.5



District Overprint - GUADALAJARA, 22.5x2.25 between two dots

- in black

- reading down at right

- Fayolle Type I; not listed by Celis Cano or Odfjell

- Schatzkes value 1

Used at Sayula

Cancellation

SAYULA in an oval

- in black

- Schatzkes #449

- Rarity factor 25

- Yag/Bash GD215

- Not listed by Liera/Backal

Paper - Plain wove, vertical

Comments

I-5. Double transfer at the top. Doubling lines at least in the 2nd O of CORREOS and the MEJI of MEJICO.

Valuation

Scott 1, used, x 25

Conclusion

This stamp is I-5

Al Señor.
D. Claudio Gutiérrez



Layula

MEXICO
Medio Real, 1856

GUADALAJARA

ID396-397

Scott #1a

Celis Cano #1ts

- double transfer at top
- Scott x 2

Color - Philatelic Foundation V-15-11

- grayish purplish blue
- Munsell number 7PB 3.8/4.2



District Overprint - GUADALAJARA, 20.5x2 without dots

- in black
- reading down at right
- Fayolle Type III; not listed by Celis Cano or Odfjell
- Schatzkes value 1

Used at Zapotlan

Cancellation

ADMON DE CORREOS DE ZAPOTLAN EL GRANDE in pointed ends ova

- in black
- Schatzkes #442
- Rarity factor 15 plus 2
- Not listed by Yag/Bash
- Not listed by Liera/Backal

Paper - Cannot be determined

Comments

I-15. Double transfer at top. There is an extra frame line across the top of the pennant.

I-15. The left ribbons are doubled and the right ribbons slightly doubled.

I-16. Double transfer at top. An extra frame line runs from the left to the I of MEJICO. Left ribbons also doubled.

Valuation

Scott 1a, used, x 64

Conclusion

This pair on piece is I-15 to I-16

MEXICO
Medio Real, 1856

GUADALAJARA

ID416

Scott #1

Celis Cano #11mvc1

- marginal frame line
- Scott x 3.8

Color - Philatelic Foundation V-13-11

- pale purplish blue
- Munsell number 7PB 4.7/4.5



District Overprint - GUADALAJARA, 22.5x2.25 between two dots

- in black
- reading down at right
- Fayolle Type I; not listed by Celis Cano or Odfjell
- Schatzkes value 1

Used at Zapotlan

Cancellation

ZAPOTLAN/FRANCO in two lines in box

- in black
- Schatzkes #440
- Rarity factor 15
- Not listed by Yag/Bash
- Not listed by Liera/Backal

Paper - Plain wove, vertical

Comments

I-57. There is a double transfer at the top extending down to Hidalgo's nose and a double transfer at the bottom as well.

Valuation

Scott 1, used, x 57

Conclusion

This stamp is I-57

MEXICO
Medio Real, 1856

GUADALAJARA

ID1342

Scott #1a

Celis Cano #1

- dark blue
- Scott x 1

Color - Philatelic Foundation V-15-11
- grayish purplish blue
- Munsell number 7PB 3.8/4.2

District Overprint - GUADALAJARA, 20x2.25 with period at end
- in black
- reading up at right
- Fayolle Type II; not listed by Celis Cano or Odfjell
- Schatzkes value 1

Used at San Blas

Cancellation

Franqueado en S. Blas in box

- in red
- Schatzkes #423R
- Rarity factor 20 plus 2
- Yag/Bash GD87
- Not listed by Liera/Backal



Paper - Lineal wove, horizontal

Comments

IV-44. There is a minor double transfer of the lower ornaments.

IV-44. There is a series of five lines 0.15mm apart running to 1:30 on the left side beginning at the top of the curl.

Valuation

Scott 1a, used, x 22

Conclusion

This stamp on piece is ~~IV~~^{III}-44

MEXICO
Medio Real, 1856

GUADALAJARA

ID337-338

Scott #1

Celis Cano #11mvc1

- marginal frame line
- Scott x 3.8

Color - Philatelic Foundation V-15-11

- grayish purplish blue
- Munsell number 7PB 3.8/4.2

District Overprint - GUADALAJARA, 20.5x2 without dots

- in black
- reading down at right
- Fayolle Type III; not listed by Celis Cano or Odfjell
- Schatzkes value 1

Used at San Blas

Cancellation

Franqueado en S. Blas in box

- in red
- Schatzkes #423R
- Rarity factor 20 plus 2
- Yag/Bash GD87
- Not listed by Liera/Backal

Paper - Cannot be determined

Comments

II-49. The lower left ball ornaments are weak.

Valuation

Scott 1, used, x 156

Conclusion

This pair on piece is II-49 to II-50





*Los señores Quintana y
Marabón*

MEXICO
Medio Real, 1856

GUADALAJARA

ID1068

Scott #1

Celis Cano #11mvc1

- marginal frame line
- Scott x 3.8

Color - Philatelic Foundation V-13-11
- pale purplish blue
- Munsell number 7PB 4.7/4.5

District Overprint - GUADALAJARA, 20x2.25 with period at end
- in black
- reading down at right
- Fayolle Type II; not listed by Celis Cano or Odfjell
- Schatzkes value 1

Used at Tepic

Cancellation

Franqueado en Tepic in box

- in red
- Schatzkes #409
- Rarity factor 2 plus 10
- Yag/Bash GD266
- Not listed by Liera/Backal



Paper - Plain wove, vertical

Comments

II-4. The right curl is short. It measures 3.4 mm.

Valuation

Scott 1, used, x 17.6

Conclusion

This stamp is I-4

MEXICO
Medio Real, 1856

GUADALAJARA

ID1051-1053

Scott #1

Celis Cano #11mvc1

- marginal frame line
- Scott x 3.8

Color - Philatelic Foundation V-15-11
- grayish purplish blue
- Munsell number 7PB 3.8/4.2

District Overprint - GUADALAJARA, 20.5x2 without dots
- in black
- reading up at right
- Fayolle Type III; not listed by Celis Cano or Odfjell
- Schatzkes value 1

Used at Tepic

Cancellation

Franqueado en Tepic in box

- in red
- Schatzkes #409
- Rarity factor 2 plus 10
- Yag/Bash GD266
- Not listed by Liera/Backal



Paper - Lineal wove, vertical

Comments

III-1. This position has a minor double transfer at the bottom.

III-1. There is a scratch to 1:00 over the 2nd R of CORREOS and two scratches to 1:00 over the C of MEJICO.

III-2. 2 nearly vertical scratches over the J of MEJICO and one to 12:30 through the right ribbons.

III-3. Triple transfer at the top. Four frame lines over CORRE H horizontal lines through the bottoms of RRE and MEJ.

III-3. There is a dot 0.5mm NW of the C of CORREOS and scratches to 12:30 thru the M and to 12:00 right of the O of MEJICO.

Valuation

Scott 1, used, x 52.80001

Conclusion

This strip is III-1 to III-3

MEXICO
Medio Real, 1856

GUADALAJARA

ID746

Scott #1a

Celis Cano #1

- dark blue
- Scott x 1

Color - Philatelic Foundation V-15-11

- grayish purplish blue
- Munsell number 7PB 3.8/4.2

District Overprint - GUADALAJARA, 20x1.5 without dots

- in black
- reading down at right
- Celis Cano and Odffjell Type III; not listed by Fayolle
- Schatzkes value 1

Used at Tepic

Cancellation

Franqueado en Tepic in box

- in red
- Schatzkes #409
- Rarity factor 2 plus 10
- Yag/Bash GD266
- Not listed by Liera/Backal

Paper - Lineal wove, vertical

Valuation

Scott 1a, used, x 12

Conclusion

This stamp is ~~1a~~^{1a}-34



MEXICO
Medio Real, 1856

GUADALAJARA

ID761-763

Scott #1

Celis Cano #11mvc1

- marginal frame line
- Scott x 3.8

Color - Philatelic Foundation V-15-11
- grayish purplish blue
- Munsell number 7PB 3.8/4.2

District Overprint - GUADALAJARA, 22x2.25 between two dots
- in black
- reading down at right
- Celis Cano and Odfjell Type I; not listed by Fayolle
- Schatzkes value 1

Used at Autlan de la Grana

Cancellation

Autlan and ornaments in an elongated oval

- in black
- Schatzkes #373
- Rarity factor 25 plus 5
- Yag/Bash GD71
- Liera/Backal
- Liera/Backal value

Paper - Plain wove, vertical

Comments

II-29. The right ribbons are short. The top one measures 1.6mm and the bottom one 1.8mm.

II-29. There are four diagonal lines to 7:30 in the left margin opposite Hidalgo's chin.

II-30. The top left ribbon is short. It measures 1.8 mm.

Valuation

Scott 1, used, x 300

Conclusion

This strip is II-28 to II-30



MEXICO
Medio Real, 1856

GUADALAJARA

ID1067

Scott #1

Celis Cano #11mvc1

- marginal frame line
- Scott x 3.8

Color - Philatelic Foundation V-15-11
- grayish purplish blue
- Munsell number 7PB 3.8/4.2



District Overprint - GUADALAJARA, 20.5x2 without dots
- in black
- reading up at right
- Fayolle Type III; not listed by Celis Cano or Odfjell
- Schatzkes value 1

Used at Cocula

Cancellation

Letter "O"

- in black
- Schatzkes #369
- Rarity factor 15
- Not listed by Yag/Bash
- Not listed by Liera/Backal

Paper - Plain wove, vertical

Comments

III-57. The lower left curl measures 2.6mm. A scratch to 12:30 runs up the left side and ends at the lower left ribbon.

Valuation

Scott 1, used, x 57

Conclusion

This stamp is II-56

MEXICO
Medio Real, 1856

GUADALAJARA

ID719-720

Scott #1

Celis Cano #1vc1

- pale blue
- Scott x 1.4

Color - Philatelic Foundation V-12-21

- moderate blue
- Munsell number 3PB 5.3/5.5

District Overprint - GUADALAJARA, 20x2.25 with period at end

- in black
- reading down at right
- Fayolle Type II; not listed by Celis Cano or Odfjell
- Schatzkes value 1

Used at Cocula

Cancellation

Letter "O"

- in black
- Schatzkes #369
- Rarity factor 15
- Not listed by Yag/Bash
- Not listed by Liera/Backal



Paper - Lineal wove, vertical

Comments

II-41. This stamp shows the "hook" variety at the bottom.

II-42. The bottom ornaments are missing at the left.

Valuation

Scott 1, used, x 42

Conclusion

This pair is II-41 to II-42

MEXICO
Medio Real, 1856

GUADALAJARA

ID108-110

Scott #1

Celis Cano #11mvc1

- marginal frame line
- Scott x 3.8

Color - Philatelic Foundation V-15-11

- grayish purplish blue
- Munsell number 7PB 3.8/4.2



District Overprint - GUADALAJARA, 20x2.25 with period at end

- in black
- reading down at right
- Fayolle Type II; not listed by Celis Cano or Odfjell
- Schatzkes value 1

Used at San Juan de los Lago

Cancellation

Sn JUAN DE LAGOS in an oval

- in black
- Schatzkes #349
- Rarity factor 10
- Not listed by Yag/Bash
- Liera/Backal 215-195
- Liera/Backal value 80

Paper - Plain wove, vertical

Comments

ID 23. The lower ornaments and the lower portion of the value tablet are missing at the left.

Valuation

Scott 1, used, x 11.4

Conclusion

This strip is II-25 to II-27



Srs.

Suñerrey e Hijos

Sayula

MEXICO
Medio Real, 1856

GUADALAJARA

ID960

Scott #1

Celis Cano #11mvc1

- marginal frame line
- Scott x 3.8

Color - Philatelic Foundation V-10-21
- light blue
- Munsell number 3PB 5.0/5.6



District Overprint - GUADALAJARA, 20.5x2 without dots
- in black
- reading up at right
- Fayolle Type III; not listed by Celis Cano or Odfjell
- Schatzkes value 1

Used at Guadalajara

Cancellation

Pen cancellation

- in black
- Schatzkes #307B
- Rarity factor 10
- Not listed by Yag/Bash
- Liera/Backal
- Liera/Backal value

Paper - Lineal wove, vertical

Comments

III-19. The lower left curl and the left side of the first ball ornament are weak.

Valuation

Scott 1, used, x 38

Conclusion

This stamp is III-19

MEXICO
Medio Real, 1856

GUADALAJARA

ID1351-1354

Scott #1a

Celis Cano #1ts

- double transfer at top
- Scott x 2

Color - Philatelic Foundation V-15-11
- grayish purplish blue
- Munsell number 7PB 3.8/4.2

District Overprint - GUADALAJARA, 20x2.25 with period at end
- in black
- reading down at left
- Fayolle Type II; not listed by Celis Cano or Odfjell
- Schatzkes value 1

Used at Guadalajara

Cancellation

FRANCO/GUADALAJARA and date in a double lined circle, dated 02/24/??

- in black
- Schatzkes #297
- Rarity factor 0
- Not listed by Yag/Bash
- Liera/Backal
- Liera/Backal value

Paper - Cannot be determined

Comments

IV-27. The top right ribbon is missing, but not on all copies.

IV-28. There is a strong die pin mark 1.1mm north of the tip of the top right ribbon.

IV-28. There is an extra line 0.5mm north of the outer end of the lower right ribbon which is 0.8mm long.

Valuation

Scott 1a, used, x 8

Conclusion

This strip on piece is ^{III}~~IV~~-25 to ^{VI}~~IV~~-28



MEXICO
Medio Real, 1856

GUADALAJARA

ID520

Scott #1

Celis Cano #11mvc1

- marginal frame line
- Scott x 3.8

Color - Philatelic Foundation IV-13-02
- moderate greenish blue
- Munsell number 7B 5.0/4.6



District Overprint - GUADALAJARA, 20x2.25 with period at end
- in black
- reading up at right
- Fayolle Type II; not listed by Celis Cano or Odfjell
- Schatzkes value 1

Used at Guadalajara

Cancellation

FRANCO/GUADALAJARA and date in a double lined circle, dated ??/21/??

- in black
- Schatzkes #297
- Rarity factor 0
- Not listed by Yag/Bash
- Liera/Backal
- Liera/Backal value

Paper - Lineal wove, vertical

Comments

III-6. The frame line at the top consists of two 0.1mm lines 0.2 mm apart.

Valuation

Scott 1, used, x 3.8

Conclusion

This stamp is III-6

MEXICO
Medio Real, 1856

GUADALAJARA

ID407-410

Scott #1a

Celis Cano #1

- dark blue
- Scott x 1

Color - Philatelic Foundation V-13-11
- pale purplish blue
- Munsell number 7PB 4.7/4.5

District Overprint - GUADALAJARA, 20x2.25 with period at end
- in black
- reading up at right
- Fayolle Type II; not listed by Celis Cano or Odfjell
- Schatzkes value 1

Used at Guadalajara

Cancellation

FRANCO/GUADALAJARA and date in a double lined circle, dated 03/22/61
- in black
- Schatzkes #297
- Rarity factor 0
- Not listed by Yag/Bash
- Liera/Backal
- Liera/Backal value

Paper - Lineal wove, vertical

Comments

III-15. Three scratches to 1:30 above each O of CORREOS and to 1:00 above the lower right ribbon.

III-15. There is a scratch to 1:30 below the right curl.

III-15. A 2.9mm scratch to 11:45 beginning 0.3mm above the pennant frame line over the I of MEJICO.

III-16. An arcing scratch to 1:00 above the top right ribbon and several scratches to 1:30 and 2:00 below the value tablet.

Valuation

Scott 1a, used, x 4

Conclusion

This block is III-15 to III-16; III-21 to III-22



MEXICO
Medio Real, 1856

GUADALAJARA

ID119-121

Scott #1a

Celis Cano #1ti

- double trans at bottom
- Scott x 2

Color - Philatelic Foundation V-14-21

- moderate blue
- Munsell number 3PB 4.5/5.5



District Overprint - GUADALAJARA, 20.5x2 without dots

- in black
- reading down at left
- Fayolle Type III; not listed by Celis Cano or Odfjell
- Schatzkes value 1

Used at Guadalajara

Cancellation

FRANCO GUADALAJARA and date in double-lined circle, dated 03/26/61

- in black
- Schatzkes #297
- Rarity factor 0
- Not listed by Yag/Bash
- Liera/Backal
- Liera/Backal value

Paper - Plain wove, vertical

Comments

IV-22. The bottom ornaments are missing except for 1.0mm at the left of the left curl.

IV-23. This stamp has a minor double transfer at the bottom.

~~IV-22.~~ AN AREA OF CROSS-HATCHING 2.5MM HIGH AND 0.8MM WIDE FROM RIGHT VALUE TABLET LEAF NORTH.

Valuation

Scott 1a, used, x 6

Conclusion

This strip is ^{II}~~IV~~-21 to ^{III}~~IV~~-23

MEXICO
Medio Real, 1856

GUADALAJARA

ID1188

Scott #1a

Celis Cano #1ts

- double transfer at top
- Scott x 2

Color - Philatelic Foundation V-15-11
- grayish purplish blue
- Munsell number 7PB 3.8/4.2

District Overprint - GUADALAJARA, 22.5x2.25 between two dots
- in black
- reading down at left
- Fayolle Type I; not listed by Celis Cano or Odfjell
- Schatzkes value 1

Used at Guadalajara

Cancellation

CORREOS GUADALAJARA in double lined oval

- in black
- Schatzkes #295
- Rarity factor 0
- Not listed by Yag/Bash
- Not listed by Liera/Backal



Paper - Plain wove, vertical

Comments

I-34. Double transfer at the top. Both sets of ribbons are doubled. Displacement is 0.2mm.

Valuation

Scott 1a, used, x 2

Conclusion

This stamp is I-34

MEXICO
Medio Real, 1856

GUADALAJARA

ID486

Scott #1

Celis Cano #11mvc1

- marginal frame line
- Scott x 3.8

Color - Philatelic Foundation IV-16-01
- moderate greenish blue
- Munsell number 6B 3.6/3.2



District Overprint - GUADALAJARA, 22.5x2.25 between two dots
- in black
- reading up at right
- Fayolle Type I; not listed by Celis Cano or Odfjell
- Schatzkes value 1

Used at Guadalajara

Cancellation

CORREOS GUADALAJARA in double lined oval
- in black
- Schatzkes #295
- Rarity factor 0
- Not listed by Yag/Bash
- Not listed by Liera/Backal

Paper - Plain wove, vertical

Comments

I-24. There is a 0.2mm dot 0.4mm below the arc between the first and second lower ornaments from the left.

Valuation

Scott 1, used, x 3.8

Conclusion

This stamp is I-24

MEXICO
Medio Real, 1856

GUADALAJARA

ID435

Scott #1a

Celis Cano #1

- dark blue
- Scott x 1

Color - Philatelic Foundation V-15-11
- grayish purplish blue
- Munsell number 7PB 3.8/4.2

District Overprint - GUADALAJARA, 20.5x2 without dots
- in black
- reading up at right
- Fayolle Type III; not listed by Celis Cano or Odfjell
- Schatzkes value 1

Used at Guadalajara

Cancellation

CORREDS GUADALAJARA in double lined oval
- in black
- Schatzkes #295
- Rarity factor 0
- Not listed by Yag/Bash
- Not listed by Liera/Backal



Paper - Lineal wove, vertical

Comments

IV-28. There is an extra line 0.5mm north of the outer end of the lower right ribbon which is 0.8mm long.

Valuation

Scott 1a, used, x 1

Conclusion

This stamp is ^{IV}~~IV~~-28

MEXICO
Medio Real, 1856

GUADALAJARA

ID1071

Scott #1a

Celis Cano #1ts

- double transfer at top
- Scott x 2

Color - Philatelic Foundation V-15-11
- grayish purplish blue
- Munsell number 7PB 3.8/4.2



District Overprint - GUADALAJARA, 22.5x2.25 between two dots
- in black
- reading down at left
- Fayolle Type I; not listed by Celis Cano or Odfjell
- Schatzkes value 1

Used at Guadalajara

Cancellation

FRANQUEADO/EN/GUADALAJARA in a double oval

- in black
- Schatzkes #293
- Rarity factor 0
- Yag/Bash GD12
- Liera/Backal
- Liera/Backal value

Paper - Plain wove, vertical

Comments

I-12. Doublr transfer at top displaced 0.15mm upwards. An extra frame line runs over CORREOS M then it becomes thick.

Valuation

Scott 1a, used, x 2

Conclusion

This stamp is I-12

MEXICO
Medio Real, 1856

GUADALAJARA

ID1001-1002

Scott #1a

Celis Cano #1

- dark blue
- Scott x 1

Color - Philatelic Foundation V-15-11

- grayish purplish blue
- Munsell number 7PB 3.8/4.2

District Overprint - GUADALAJARA, 20x2.25 with period at end

- in black
- reading down at left
- Fayolle Type II; not listed by Celis Cano or Odfjell
- Schatzkes value 1

Used at Guadalajara

Cancellation

FRANQUEADO/EN/GUADALAJARA in a double oval

- in black
- Schatzkes #293
- Rarity factor 0
- Yag/Bash GD12
- Liera/Backal
- Liera/Backal value



Paper - Lineal wove, vertical

Comments

IV-37. There is a 0.9mm curved line 0.7mm below the lower left ribbon.

IV-37. Two scratches to 6:30 at the bottom. One is between the 1st and 2nd balls and the other in the middle of the 6th ball

IV-38. There is a 1.1mm tall by 0.5mm mark 0.5mm SW of the 2nd lower ball ornament which looks somewhat like a star.

IV-38. A strong 0.9mm long top right die pin mark and a 0.5mm line to 2:00 0.7mm below the lower right ribbon.

Valuation

Scott 1a, used, x 2

Conclusion

This pair is ~~IV~~^{IV}-37 to ~~IV~~^{IV}-38

MEXICO
Medio Real, 1856

GUADALAJARA

ID962

Scott #1

Celis Cano #11mvcl

- marginal frame line
- Scott x 3.8

Color - Philatelic Foundation V-14-21
- moderate blue
- Munsell number 3PB 4.5/5.5



District Overprint - GUADALAJARA, 22x2.25 between two dots
- in black
- reading up at left
- Celis Cano and Odfjell Type I; not listed by Fayolle
- Schatzkes value 1

Used at Guadalajara

Cancellation

FRANQUEADO/EN/GUADALAJARA in a double oval

- in black
- Schatzkes #293
- Rarity factor 0
- Yag/Bash GD12
- Liera/Backal
- Liera/Backal value

Paper - Lineal wove, vertical

Comments

III-4. Faint scratches to 12:30 over the RE and O of CORREOS. Short lower right curl. Double frame line at the top.

III-4. A scratch through the left edge of the C of CORREOS to 11:30 and a 0.7mm scratch down to 6:30 from the frame line.

Valuation

Scott 1, used, x 3.8

Conclusion

This stamp is III-4

MEXICO
Medio Real, 1856

GUADALAJARA

ID958

Scott #1a

Celis Cano #1ti

- double trans at bottom
- Scott x 2

Color - Philatelic Foundation V-13-11

- pale purplish blue
- Munsell number 7PB 4.7/4.5

District Overprint - GUADALAJARA, 20.5x2 without dots

- in black
- reading down at left
- Fayolle Type III; not listed by Celis Cano or Odfjell
- Schatzkes value 1

Used at Guadalajara

Cancellation

FRANQUEADO/EN/GUADALAJARA in a double oval

- in black
- Schatzkes #293
- Rarity factor 0
- Yag/Bash GD12
- Liera/Backal
- Liera/Backal value



Paper - Plain wove, vertical

Comments

IV-21. A3.0mm scratch running to 7:30 from the tip of the bottom right ribbon.

Valuation

Scott 1a, used, x 2

Conclusion *ti*

This stamp is ~~IV~~-21

MEXICO
Medio Real, 1856

GUADALAJARA

ID871-874

Scott #1a

Celis Cano #1

- dark blue
- Scott x 1

Color - Philatelic Foundation V-15-11
- grayish purplish blue
- Munsell number 7PB 3.8/4.2

District Overprint - GUADALAJARA, 20x2.25 with period at end
- in black
- reading down at left
- Fayolle Type II; not listed by Celis Cano or Odfjell
- Schatzkes value 1

Used at Guadalajara

Cancellation

FRANQUEADO/EN/GUADALAJARA in a double oval

- in black
- Schatzkes #293
- Rarity factor 0
- Yag/Bash GD12
- Liera/Backal
- Liera/Backal value

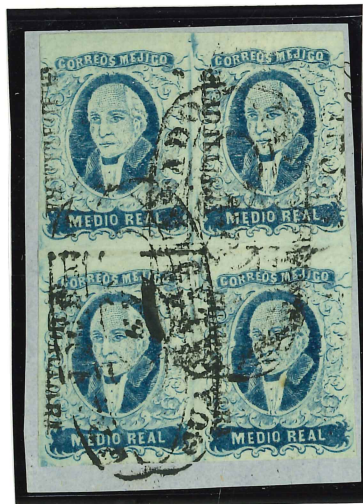
Paper - Lineal wove, vertical

Valuation

Scott 1a, used, x 4

Conclusion

This block on piece is ^{III}~~IV~~-29 to ^{III}~~IV~~-30; ^{III}~~IV~~-35 to ^{III}~~IV~~-36



MEXICO
Medio Real, 1856

GUADALAJARA

ID775-776

Scott #1a

Celis Cano #1ts

- double transfer at top
- Scott x 2

Color - Philatelic Foundation V-14-21

- moderate blue
- Munsell number 3PB 4.5/5.5

District Overprint - GUADALAJARA, 20x2.25 with period at end

- in black
- reading up at right
- Fayolle Type II; not listed by Celis Cano or Odfjell
- Schatzkes value 1

Used at Guadalajara

Cancellation

FRANQUEADO/EN/GUADALAJARA in a double oval

- in black
- Schatzkes #293
- Rarity factor 0
- Yag/Bash GD12
- Liera/Backal
- Liera/Backal value

Paper - Lineal wove, vertical

Comments

IV-6. Double transfer at top. Displacement 0.2mm. Displacement extends to 0.5mm below the lower ribbons.

Valuation

Scott 1a, used, x 4

Conclusion

This pair is ^{III}~~IV~~-5 to ^{III}~~IV~~-6



MEXICO
Medio Real, 1856

No District Overprint
GUADALAJARA

ID771-774

Scott #1a

Celis Cano #1ti

- double trans at bottom
- Scott x 2

Color - Philatelic Foundation V-14-21
- moderate blue
- Munsell number 3PB 4.5/5.5

Without District Overprint

Used at Guadalajara

Cancellation

FRANQUEADO/EN/GUADALAJARA in a double oval

- in black
- Schatzkes #293
- Rarity factor 0
- Yag/Bash GD12
- Liera/Backal
- Liera/Backal value



Paper - Plain wove, vertical

Comments

II-49. The lower left ball ornaments are weak.

II-55. There is a double transfer to the right just above the value tablet and an area of cross-hatching at the 6th ball.

II-55. The lower left curl is short. It measures 2.7mm.

II-56. The lower left curl is short. It measures 3.1mm.

ID772 is the same as ID338 and 482. ID773 is the same as ID187, 647 and 658. ID774 is the same as ID188 and 648.

This is a rejoined block.

Valuation

Scott 1a, used, x 8

Conclusion

The plate position of this block on piece is unknown.

II-49 to II-50; II-55 to II-56

MEXICO
Medio Real, 1856

GUADALAJARA

ID426

Scott #1

Celis Cano #11mvc1

- marginal frame line
- Scott x 3.8

Color - Philatelic Foundation IV-16-01

- moderate greenish blue
- Munsell number 6B 3.6/3.2

District Overprint - GUADALAJARA, 20.5x2 without dots

- in black
- reading up at right
- Fayolle Type III; not listed by Celis Cano or Odfjell
- Schatzkes value 1

Used at Guadalajara

Cancellation

FRANQUEADO/EN/GUADALAJARA in a double oval

- in black
- Schatzkes #293
- Rarity factor 0
- Yag/Bash GD12
- Liera/Backal
- Liera/Backal value

Paper - Lineal wove, vertical

Comments

IV-24. The right ribbons measure 0.0mm and 1.5-1.8mm. The right curl measures 4.0mm.

IV-24. There is a 1.5mm by 1.0mm oval of smudges on top of the lower right ball ornament.

Valuation

Scott 1, used, x 3.8

Concl

This



MEXICO
Medio Real, 1856

GUADALAJARA

ID462

Scott #1
Celis Cano #11mvc1
- marginal frame line
- Scott x 3.8

Color - Philatelic Foundation V-13-11
- pale purplish blue
- Munsell number 7PB 4.7/4.5



District Overprint - GUADALAJARA, 20x2.25 with period at end
- in black
- reading down at left
- Fayolle Type II; not listed by Celis Cano or Odfjell
- Schatzkes value 1

Used at Guadalajara

Cancellation

FRANQUEADO/EN/GUADALAJARA in a double oval
- in black
- Schatzkes #293
- Rarity factor 0
- Yag/Bash GD12
- Liera/Backal
- Liera/Backal value

Paper - Lineal wove, vertical

Comments

IV-18. The top right ribbon is missing and the lower right ribbon is only 1.3mm long.

IV-18. The lower right curl is only 2.9mm long.

Valuation

Scott 1, used, x 3.8

Conclusion

This stamp is ^{IV}~~IV~~-18