

# South Africa

1910





GREEN



BLUE GREEN



YELLOW GREEN



SHADES OF RED



# South Africa

1913

PMB



DULL ORANGE

SOMERSET

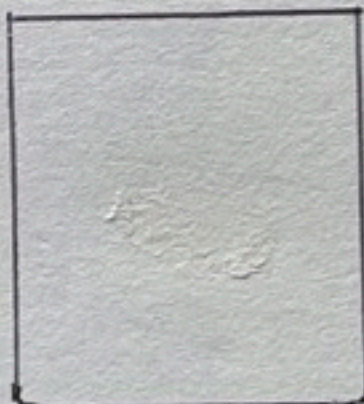
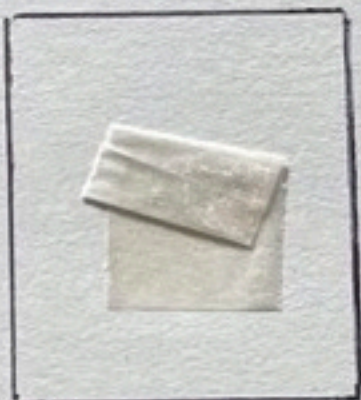


SAGE GREEN

OLIVE GREEN

PURPLE

RED PURPLE



NO WHIC



5481E

COIL STAMPS



SHADES OF RED

# South Africa

## 1913 BLOCKS



INV  
WMK  
←



BOOKLET INV WMK.

# South Africa

## 1926

UPR. WMK



INV WMK



PART  
IMPERF



# South Africa

1927



P 14



P 13 1/2

GRAHAMSTOWN



P 14



MINT PART IMPRINT



P 13 1/2



P 14

South Africa

1927



P14 PART IMPRINT



P13 1/2 UP



P 13 1/2 DOWN



5/-



South Africa

1929 AIR



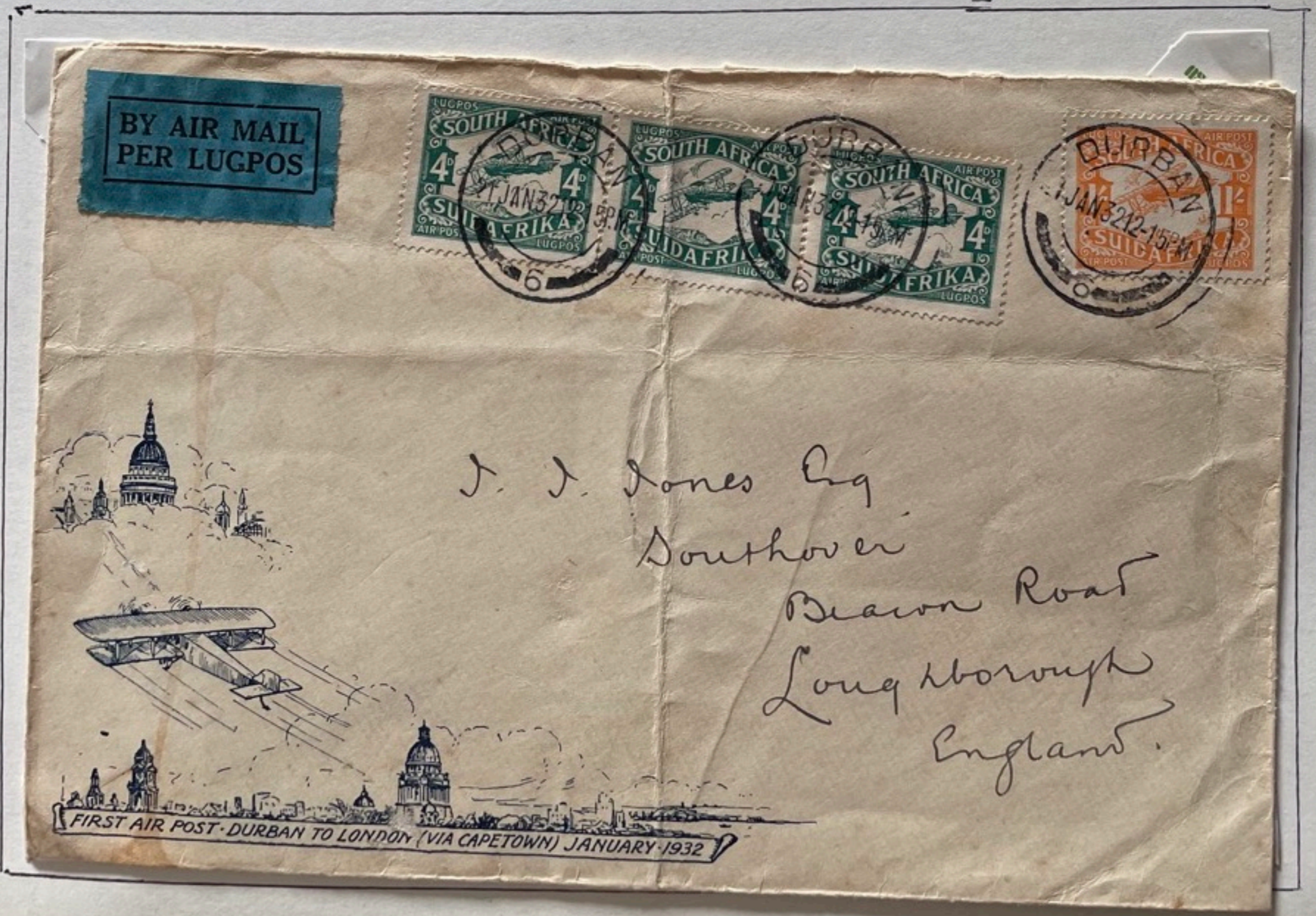
South Africa

1929 AIR



PUBLISHED BY J. ROBERTSON, STAMP DEALER, OLD ARCADE, JOHANNESBURG

By the First Air Mail from Capetown to London—per Imperial Airways.



FIRST AIR POST - DURBAN TO LONDON (VIA CAPETOWN) JANUARY 1932

# South Africa 1930 - 1945



GREY + GREEN



BLACK + GREEN



ROLL/COLL



ARROW BLOCK



BLUE GRN + BLACK



INV WMK



USED GREEN + BLACK.

# South Africa 1930 - 1945



TYPE I



BLACK + CARMINE



TYPE II

HUMANSDORP



INV WMK TYPE I

BETHLEHEM



INV WMK TYPE II



MINT TYPE II



NO WMK TRIAL  
(MISPRINT)



BROKEN FRAME

MAROON + BLACK

# South Africa 1930 - 1945

M & ANDULI



SLATE GREY + LILAC

WORCESTER



GREENISH GREY + MAUVE

CARNARVON



BLUE + VIOLET

KINGWILLIAMSTOWN



INV WMK



UPR. WMK.



INV WMK

CALEDON



INV WMK

CARNARVON



UPR. WMK.

# South Africa

1930 - 1945



SG 46 REDDISH BROWN

LONDON  
PRINT

SG 46  
RED-BRN.



SG. 46(b) PURPLE BROWN.



SG. 46 b OCHRE BROWN



SG. 46(b) BISTRE BROWN



46(b) SHADE



46(b) SHADE

# South Africa

## 1930 - 1945



WMK UPR.



SHADE WMK. INV.



WMK UPR



WMK INV.

SOMERSET



BROWN + GREY-GRN.



BROWN BLuish - GREEN.

South Africa

1933 Voortrekker



1838

Master Martin Bayer  
C/o Dr. Bayer  
Barkley West C.P.

VOORTREKKER-EEUFEES  
VOORTREKKER CENTENARY  
Herdenkingskoeverf aan o'ssewa-toeg  
Commemorative cover of ox-wagon journey  
KAAPSTAD - PRETORIA  
8 Aug. - 15 Dec.  
8 Aug. - 15 Dec.  
1938

# South Africa 1933 - 1948



SHEET NO. 9043



ARROW BLOCK



COIL ✓  
13 1/2 R14



SHADES



SHADES



INV WMK



(TOP) WHITE LINE  
ABOVE SUID AFRIKA.

# South Africa 1933 - 1948



1936  
BOOKLET



PART ARROW BLK



SHADE



BOOKLET  
← INV WMK



CYLINDER 6B



PART FRAME MISSING



SHADE



SHADES



SHADE



ESKONE SHADE



SHADE



SHADE



REDUCED SIZE



# South Africa

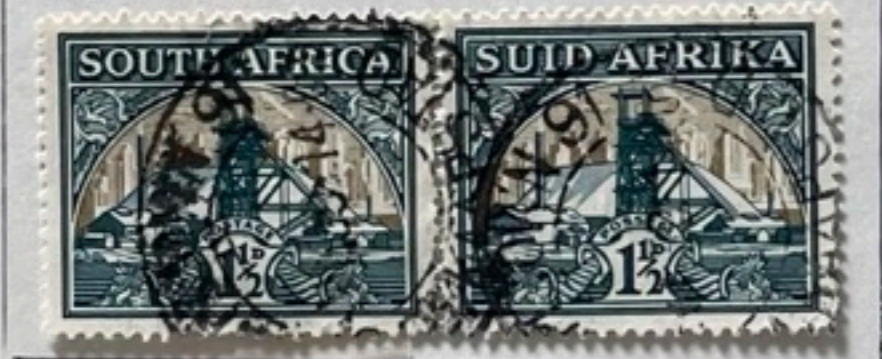
1933 - 1948



upr.  
WTK



USED



PART MISSING SHADE  
ON MINE DUMP



PART MISSING  
SHADE ON MINE  
DUMP.



ALBINO  
GOLD CENTER



GREEN LINE  
THRU MACHINERY  
TOP SCAFFOLDING

1933-1948

No. 58  
↙



No 58 BLUE AND VIOLET.



SHEET NO. 5124

SHADES

II

III



1933 - 1948



ARROW BLOCK



BLACK + GREEN



BLK +  
BLUE-GREEN



DARK BRN + BLUE  
R/HAND VARIETY



BLACK +  
BLUE

UNIE  
~~REPUBLIEK~~  
VAN  
SUID-AFRIKA



UNION  
~~REPUBLIC~~  
OF  
SOUTH AFRICA

BOOKLET PANE 1947 — 1954



SHADE

USED SHADES

PRINTED ON 1926 PLATES



1961 CYLINDERS



UNIE  
REPUBLICK  
VAN  
SUID-AFRIKA



UNION  
REPUBLIC  
OF  
SOUTH AFRICA

1941



SHADE

Cylinder No. 6919 B



1945 →  
TO  
1950



UNIE  
~~REPUBLIEK~~  
 VAN  
 SUID - AFRIKA



UNION  
~~REPUBLIC~~  
 OF  
 SOUTH AFRICA

1947 - 1954



BOOKLET 115A



2

37

1950 CYLINDER



7 0 4 2

1945  
 SG. 106



1945 S.G. 106



1946 106A

# South Africa

56 121  
48 51

## 1947 - 1954



CYLINDER NO. 17



USED SHADE



# South Africa

1947 - 1954



USED SHADES OF 1950 ISSUE



MINT



SG 120



SG 120a



# South Africa

1947 - 1954

3



1229

1938

VOORTREKKER



S.A. POSTCARD

KRUGER NATIONAL PARK

1934 CAT R120-00



POSKAART • POST CARD

*Alleen vir die adres*  
*For address only*



NATIONALE KRUGERWILDTUIN  
KRUGER NATIONAL PARK

# South Africa

## 1937 Coronation



# South Africa

## 1937 A/Blocks, Varieties

↓ DOT IN INNER RIGHT FRAME



9 4 1 5

↓ CIGARETTE SMOKE



8 6 6 8

# South Africa

1937 A/Blocks, varieties



4 8 4 2



SOUTH AFRICA

1937 A/Block, varieties



MISSING HYPHEN



SOUTH AFRICA

1941



8 5 9 6



# South Africa



CIGARETTE SHOP VARIETY



STAIN ON UNIFORM



WILLOWS

# South Africa

1942 - 1946



South Africa

1942 Blocks & Cover



SOUTH AFRICA

1946

# 1946 Victory

BROKEN FRAME



RED

# 1947 Royal visit



WITTE DRIFT

# South Africa

1948 SILVER WEDDING.



**R** VEREENIGING  
No 8220



287

*First Day Cover*

T.J. Van Rooyen,  
P.O. Box 53,  
VEREENIGING.

1947 ROYAL TOUR OF S.A. (RAIL)



PRETORIA 25  
1947

Royal Tour  
DATE STAMP  
1947  
South Africa

**R** PRETORIA 25  
No 0013

LIBERTY STAMP SERVICE  
P.O. BOX 14, BENONI SOUTH,  
TRANSVAAL, SOUTH AFRICA

# South Africa 1949 Settlers

EXTENDED MAST \

✓ FLAG BETWEEN MASTS



## THE PHILATELIC SOCIETY OF NATAL

### Civic Centenary Philatelic Exhibition

Centenary of Establishment of  
Municipality of Durban  
1854 — 1954

Area of Durban in 1854, 7,165 acres  
Area of Durban in 1954, 44,927 acres



First Borough Seal

Population of Durban in 1854  
Population of Durban in 1954  
Total Population of Durban in



ALICHTENSTEIN



Cylinder No. 29

1949 South Africa



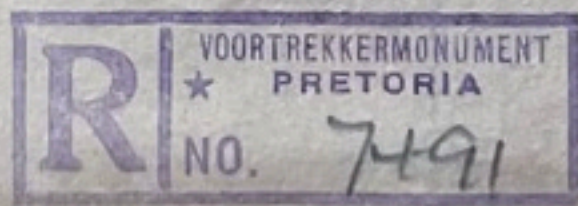
PINE  
LANDS

UNION OF SOUTH AFRICA  
IN COMMEMORATION OF  
**THE VOORTREKKERS**



**HEROES AND HEROINES  
OF OUR  
EUROPEAN CIVILISATION**

MONUMENT UNVEILING  
16th DECEMBER, 1949



13215

Mrs G. L. Buttl,  
c/o P. O. Box 1314,  
Pretoria



LAKE IN EAST AFRICA



Mr.

H. Welge

Eirup

P.M.B. Mariental

R No 1300

BY AIR MAIL  
PER LUGOS  
PAR AVION



1952

# SOUTH AFRICA



MUNNIE



**R** VEREENIGING 1  
No 1441

6337



1952  
300 YEARS OF PROGRESS



T.J. VAN ROOYEN, JNR.  
P.O. BOX 53,  
VEREENIGING.



OFFICIAL  
COMMEMORATIVE  
ENVELOPE

1652 *Van Riebeeck Festival* WE BUILD A NATION

# South Africa-1953



# SOUTH AFRICA

PHILATELIC EXHIBITION JOHANNESBURG  
 FILATELISTE-UITSTALLING JOHANNESBURG

1936

JIPEX



# SOUTH AFRICA

JOHANNESBURG INTERNATIONAL PHILATELIC EXHIBITION,  
NOVEMBER 2ND - 14TH, 1936.

JIPEX



OFFICIAL ENVELOPE

*Mr. J. Kay  
Hazeldene Road  
Sea View  
Natal*

Johannesburg International Philatelic  
Exhibition, 1936.



Johannesburgse Internasionale  
Filateliese Tentoonstelling, 1936.

*Johannesburg*

*Park Town*

*7 Wellington Road*

*Mrs. A. Koggo*

OFFICIAL ENVELOPE



JIPEX

Johannesburgse Internasionale  
Filateliese Tentoonstelling, 1936.



Johannesburg International Philatelic  
Exhibition, 1936.

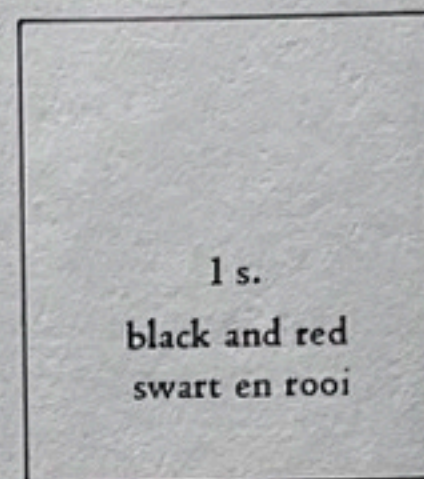
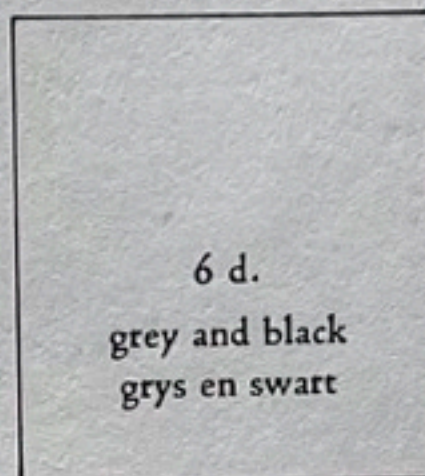
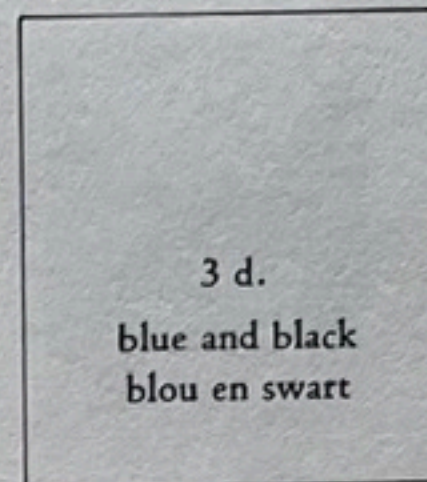
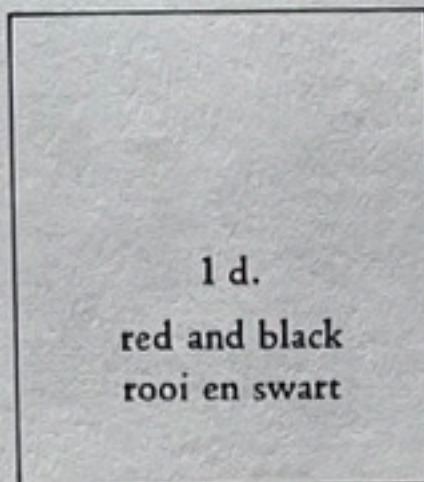
JOHANNESBURG INTERNATIONAL PHILATELIC EXHIBITION,  
NOVEMBER 2ND - 14TH, 1936.

# SUID-AFRIKA

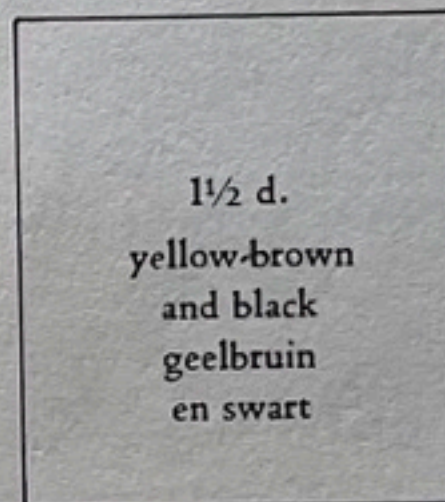
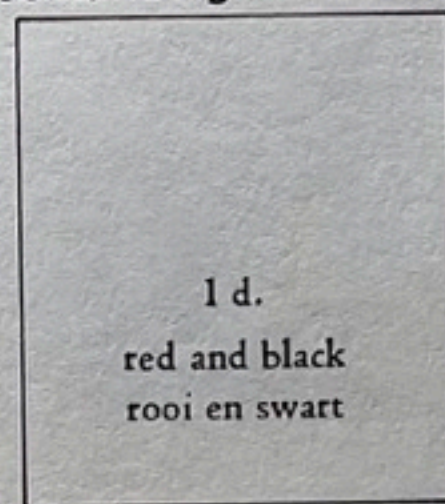
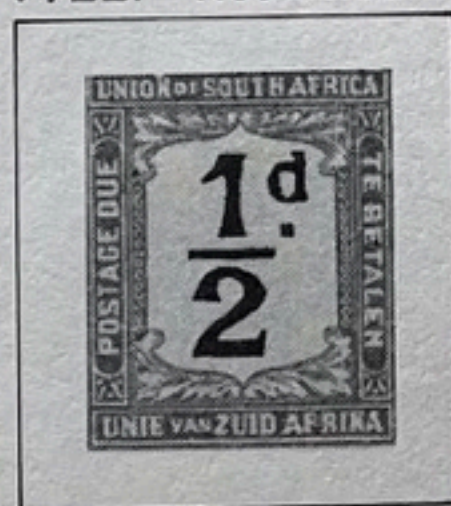
POSTAGE DUES

BOETESEËLS

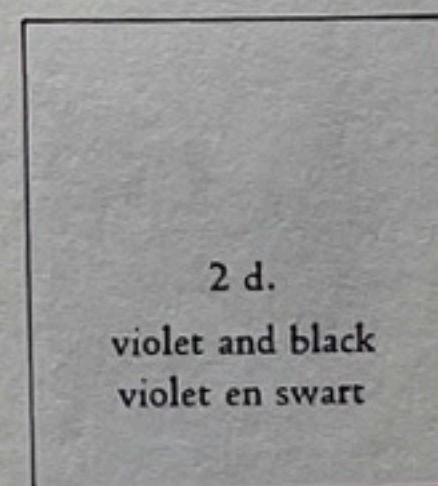
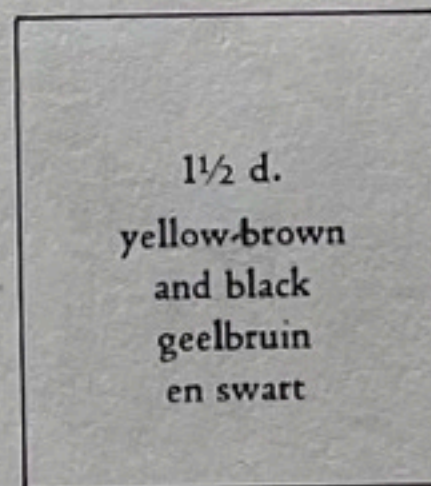
1914-'22



1922. Rouletted. Steektanding



1922-'26



# SUID-AFRIKA

POSTAGE DUES

BOETESEËLS

1914-'22



6 d.  
grey and black  
grys en swart

1 s.  
black and red  
swart en rooi

1922. Rouletted. Steektanding



1922-'26



6 d.  
grey and black  
grys en swart

# SOUTH AFRICA

*P 13 1/2 x 14*

1927-'28



*P 15 x 14*

1932-'42. Wm. Springbok

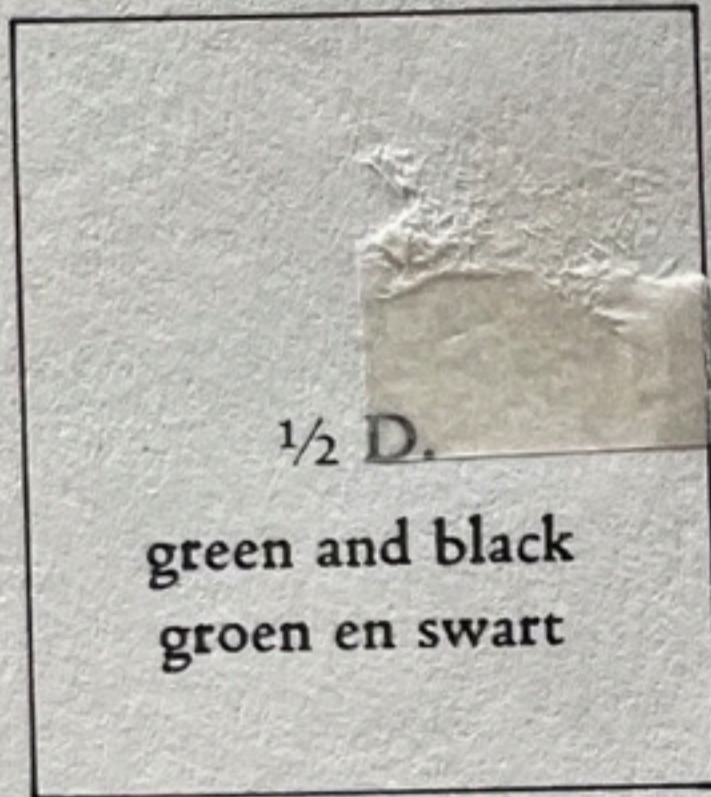


1943-'47



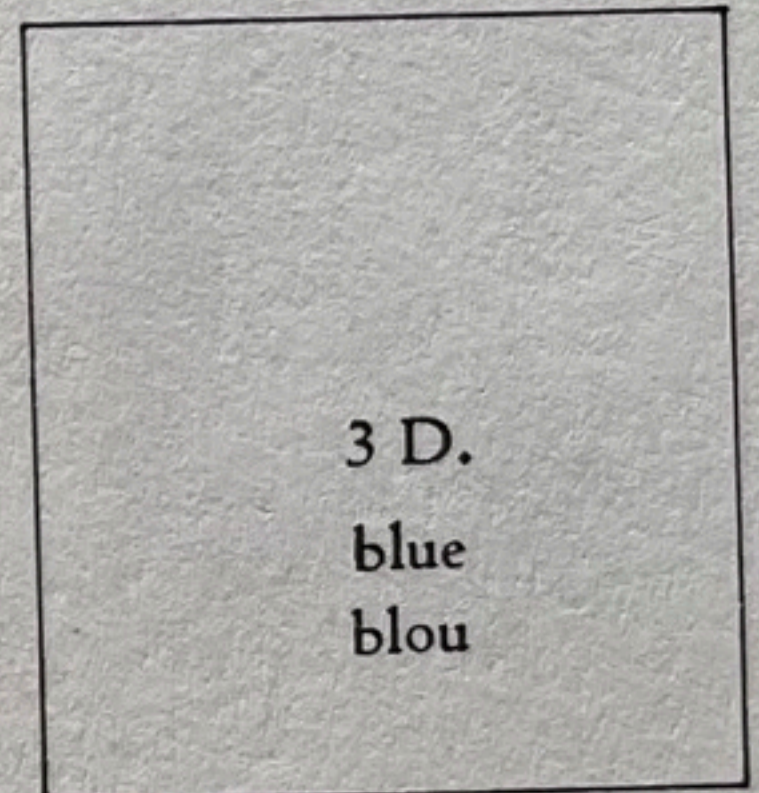
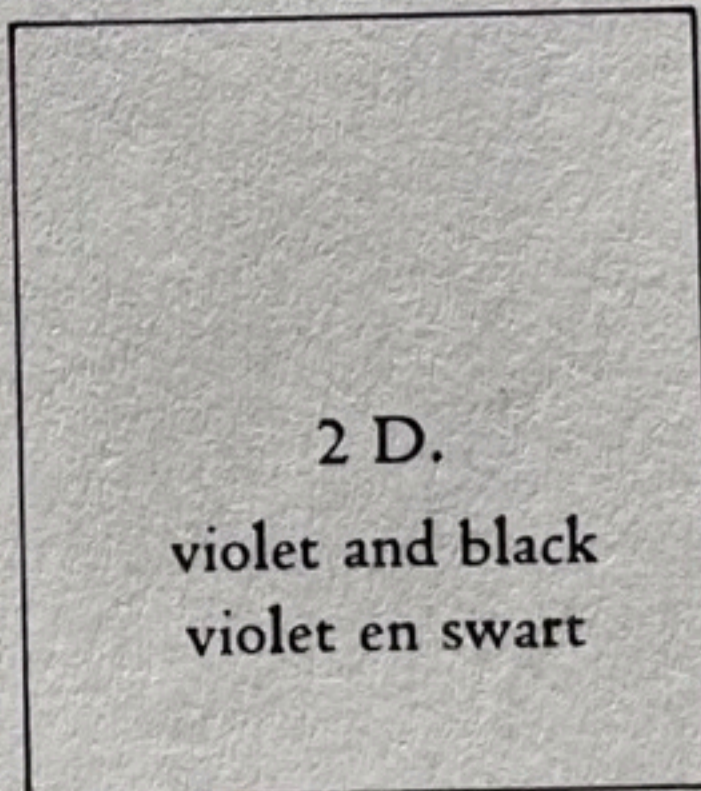
# SUID-AFRIKA

1948-'49. "SUIDAFRIKA".



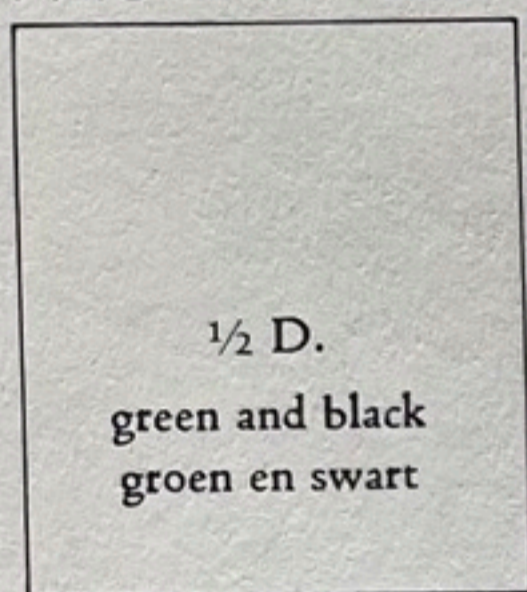
3 D.  
blue  
blou

1950-'58. "SUID-AFRIKA".

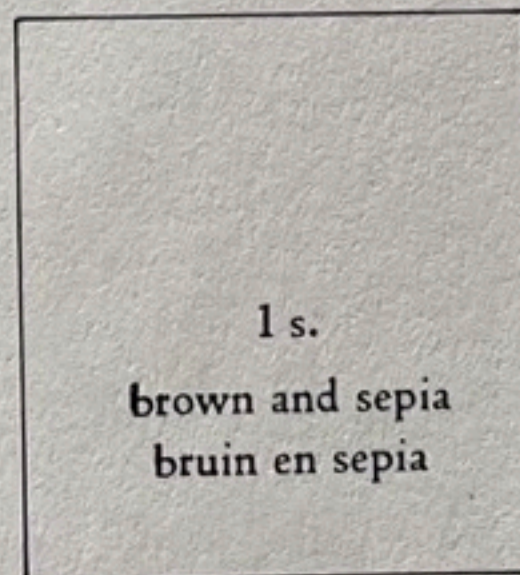
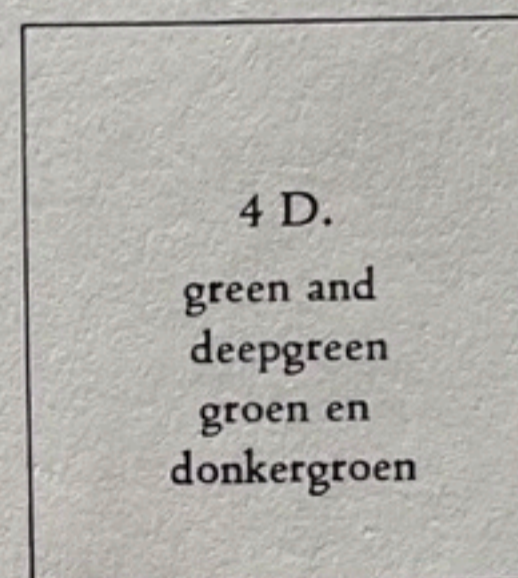


# SUID-AFRIKA

1948-'49. "SUIDAFRIKA".



1950-'58. "SUID-AFRIKA".



# SOUTH AFRICA

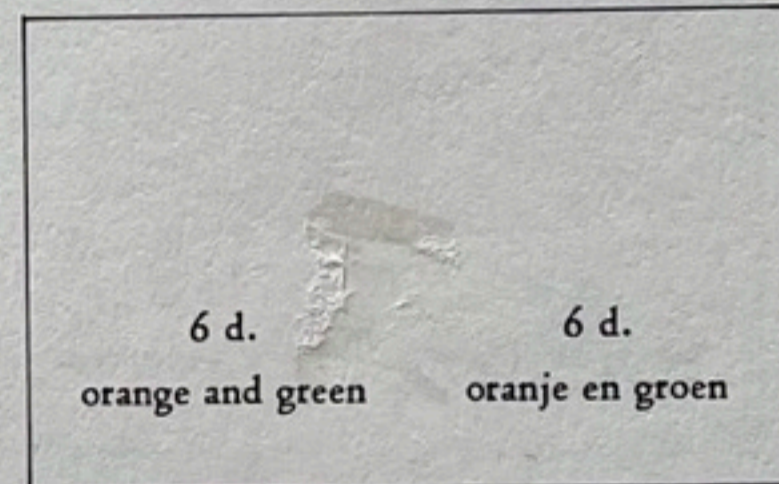
OFFICIAL

OFFISIEEL

1926



1928-'29



1929



1932-'33

# SUIDAFRIKA

1930-'47. "SUIDAFRIKA"



6 d.                      6 d.  
orange and green      oranje en groen



2 d.  
blue and violet

2 d.  
blou en violet

1 s.  
brown and blue

1 s.  
bruin en blou

2 s. 6 d.  
green and brown



2 s. 6 d.  
groen en bruin

2 s. 6 d.  
blue and brown

2 s. 6 d.  
blou en bruin

1944. "OFFISIEËL"

½ d.  
green and grey

1½ d.  
groen en gryns

1944



1949



5 s.  
black and green

5 s.  
swart en groen



10 s.  
blou en sepia

# SOUTH AFRICA

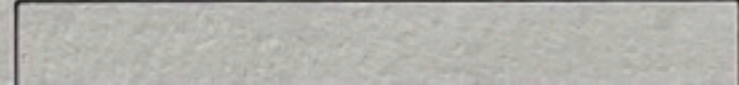
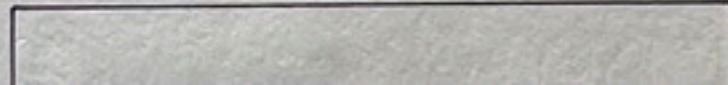
1935-'51. "SUID-AFRIKA"



T II  
 1/2 d.                      1/2 d.  
 green and grey          groen en grys



T 1945  
 2 d.                              2 d.  
 violet and grey          violet en grys





2 s  
brown