

Country.....

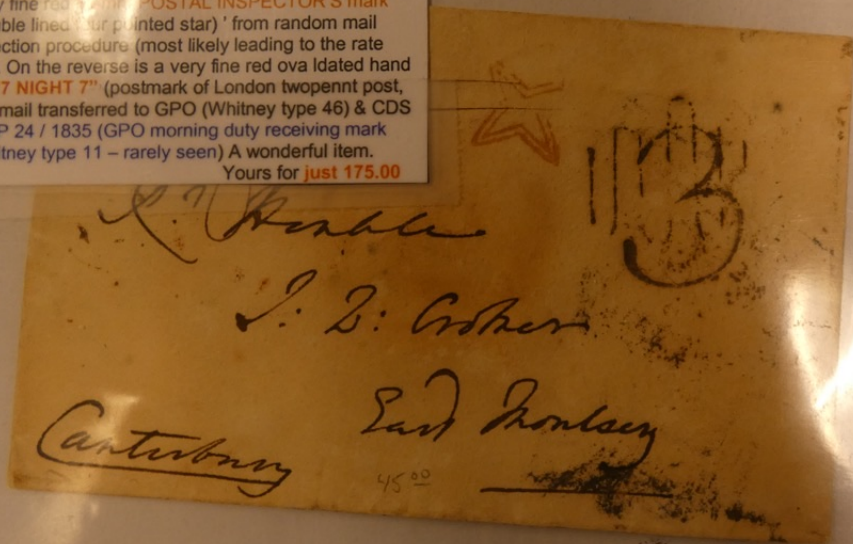
Description.....

### GREY MAIL STAMPLESS

Very fine 1835 oval postmark from London & addressed to East  
Mosley, Canterbury and featuring a m/s '3 rate-mark  
over struck with a grey mail stamp and related to '8' in m/s +  
a very fine red 'POSTAL INSPECTOR'S mark  
(double lined four pointed star)' from random mail  
inspection procedure (most likely leading to the rate  
change). On the reverse is a very fine red oval dated hand  
stamp "7 NIGHT 7" (postmark of London twopennt post,  
used on mail transferred to GPO (Whitney type 46) & CDS  
'C / AP 24 / 1835 (GPO morning duty receiving mark  
(Whitney type 11 - rarely seen) A wonderful item.

Yours for **just 175.00**

.....LOOK ON REVERSE FOR FURTHER INFORMATION



PROUD MEMBER: APS (LIFE), RPSC, CSDA, FSDA, SDAG

[www.CollectorsExchangeOnline.com](http://www.CollectorsExchangeOnline.com)

**GREAT BRITAIN STAMPLESS**

1700. The addressed:

For Mr. John Spotswoode Avocat to be  
left at Mr. John Valang's a bookseller schop  
near the Cross at Edinburgh  
and featuring a very fine 12mm diameter Bishop mark on  
reverse. The address is in English yet the letter is in  
French!

Yours for **just 200.00**

For  
Mr. John Spotswoode Avocat to  
be left at Mr. John Valang's a  
Booksellers schop near the Cross  
at  
Edinburgh  
Scotland  
mail

Country.....

Description.....

FORMATION

**1880 GREAT BRITAIN LATE FEE "L1"**  
**ENVELOPE to RAGUSA**

Sc# 68 (SG# 142) Plate 17 tied by octagonal London "L1" -  
LATE FEE, with black, instructional "TOO LATE-GPO" plus  
very fine RAGUSA receiver on reverse - a quality item.  
EGGxJZJA  
Yours for **just \$195.00**

*Associazione Marittima*

*Ragusa*  
*Austria*



PROUD MEMBER: APS (LIFE), RPSC, CSDA, FSDA, SDAG

[www.CollectorsExchangeOnline.com](http://www.CollectorsExchangeOnline.com)

\$

**TALENTLESS O.H.M.S. COVER**  
The 1890s equivalent of a two pence was a lot of money back in  
1890 but it was the fee paid to transport this letter from  
the Town of Worcester, UK. Cover features superb  
red wax seal and regular **POST OFFICE GENERAL-CAPE**  
stamp. Check boxed **POST PAID** also applied in  
the Town. Yours for just \$200.00

3/2 Paid On A. M. Service  
at S.M.

The Resident Magistrate



POST PAID

at

Worcester.

...LOOK ON REVERSE FOR FURTHER

**Transatlantic Mail**  
ELS (written in Spanish) from London to Mexico City with bold red **LOMBARD ST/FS** hand stamp for Aug 31, 1860. Rated @ 2/3d in red ink, with "2" (Reales) applied for land postage inside Mexico. M/S "West India Steamer" @ top left. Late stampless cover.

Yours for just \$190.00

*West India Steamer*

*2*

*Señor D. Manuel de Agreda.*

*México.*

LOMBARD STREET  
F S  
AUG 31  
1860  
PAID

\$

**1858 TRANSATLANTIC COVER**

Small mourning cover from **Walsall** to **San Francisco** via Liverpool & New York-  
then overland to the West Coast. Features VF WALSALL straight line date stamp,  
m/s '1/2 1/2' + black PAID. Back stamps include an unusual L/MR 5 in black oval.  
VERY FINE & SCARCE ITEM  
YOURS FOR **JUST \$175.00**

*Liverpool*

*Mr. J. W. Bradbury*  
*San Francisco*  
*America*  
*Via New York*

1858  
WALSALL  
MR  
5



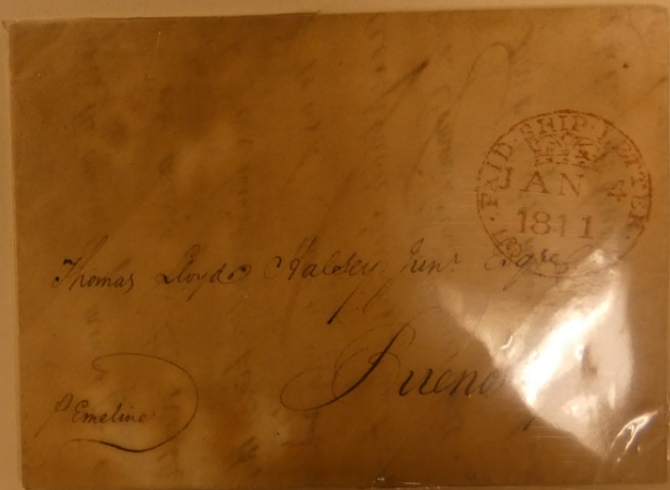
Mail between Britain and the  
United States was carried by the  
full-rigged Atlantic sailing packet ships

Letter from London to Buenos Ayres

Jan. 4, 1811

Framed circular type: 'Paid Ship Letter London'

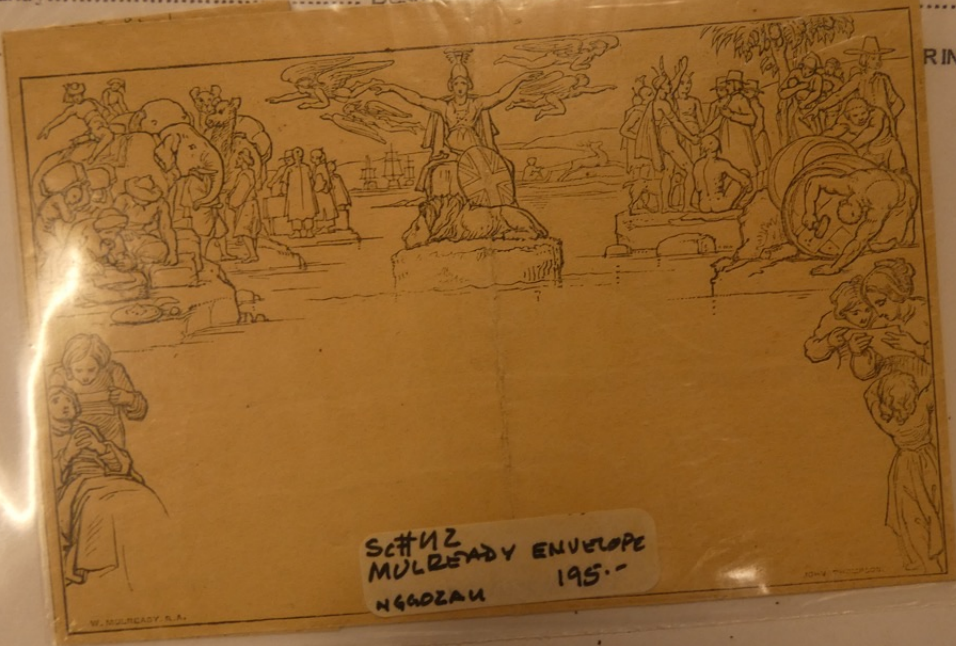
250.-



LONDON SHIP LETTER TYPE S44.1

Country..... Description.....

..... INFORMATION



SC#12  
MULREADY ENVELOPE  
195.-  
NGOZAU

PROUD MEMBER: APS (LIFE), RPSC, CSDA, FSDA, SDAG

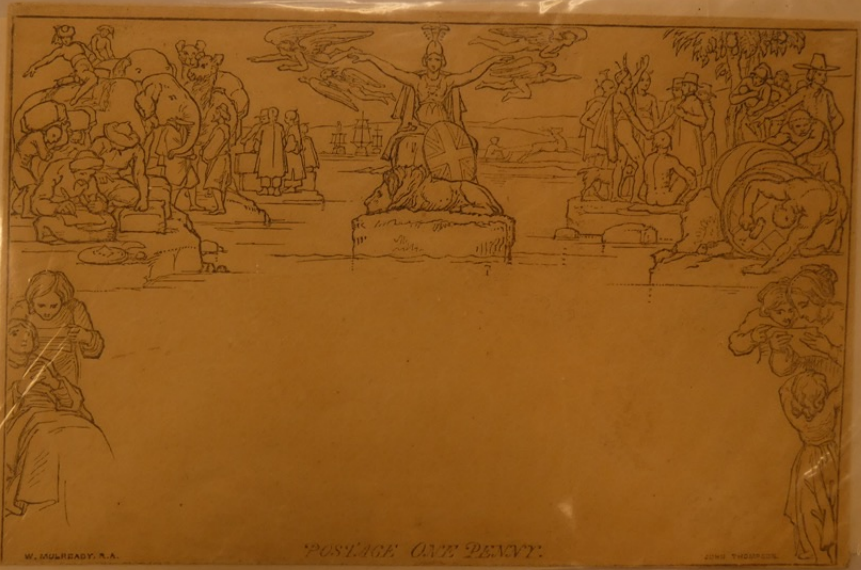
[www.CollectorsExchangeOnline.com](http://www.CollectorsExchangeOnline.com)

\$

Sc# U1-A131  
SG#

1840

\$240.00



W. MURRAY, S.A.

POSTAGE ONE PENNY.

J. THOMSON

Country..... Description.....

SC# 1 - 3 1/2 MARGINS - TIED WITH  
RED MALTESE CROSS - JUNE 12,  
1840 - RE-ENTRIES AT LOWER  
CORNERS

500.-

.....LOOK ON REVERSE FOR FURTHER INFORMATION



*W. Hobbes  
Genl. Stratford on Avon.*

June 12 - 1840

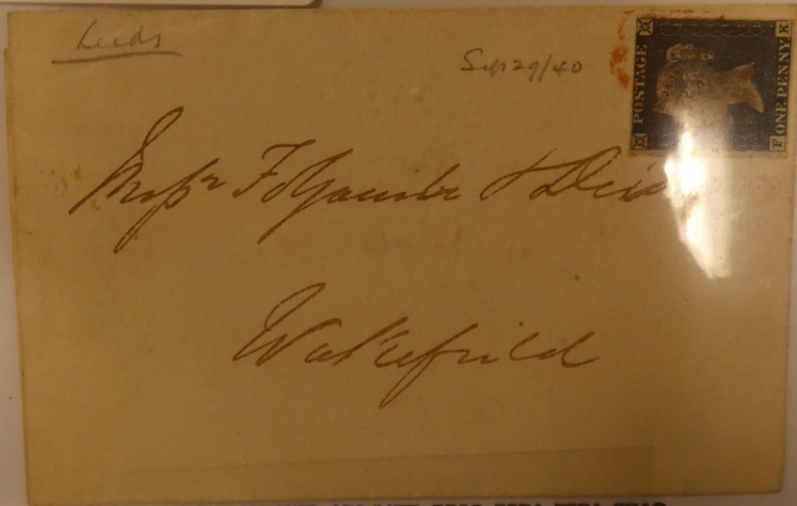
PROUD MEMBER: APS (LIFE), NFA, etc.

[www.CollectorsExchangeOnline.com](http://www.CollectorsExchangeOnline.com)

Sc#1 - THRU BY RED MALTESE CROSS  
2 MARGIN COPY WITH DEFECTIVE  
'N' IN 'ONE' - COVER DATED  
SEPTEMBER 29, 1840 - RED  
WAKEFIELD REC'U'R. 300.-

0.00

LOOK ON REVERSE FOR FURTHER INFORMATION



PROUD MEMBER: APS (LIFE), RPSC, CSDA, FSDA, SDAG

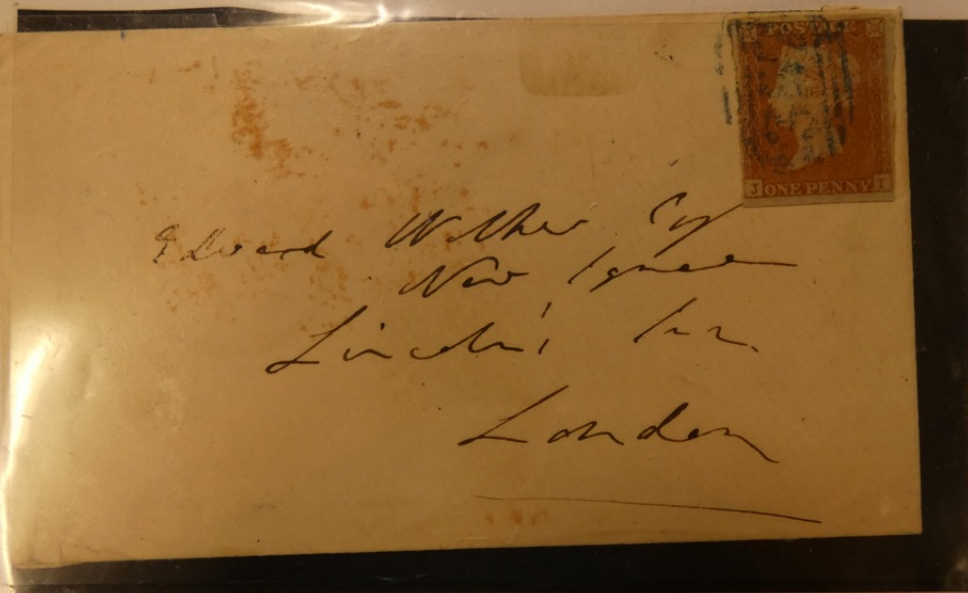
[www.CollectorsExchangeOnline.com](http://www.CollectorsExchangeOnline.com)

68

BACK STAMPS INCLUDE RED WAKEFIELD RECEIVER.

Country GI. BRITAIN Description .....

LOOK ON REVERSE FOR FURTHER INFORMATION



BLUE 1844 type postmark

'357' of Hereford struck in blue

Cover Hereford/London 29<sup>th</sup> Jan 1851

Scott #3 plate 98. Clearly showing the

PROUD MEMBER: APS (LIFE), RPSC, CSDA, FSDA, SDAG

[www.CollectorsExchangeOnline.com](http://www.CollectorsExchangeOnline.com)

\$ 350.-

SC#1-TIED & BACK HALFE  
CROSS TO MARRIAGE COVER  
3 1/2 MARGIN (ONLY) WITH  
DEFORMED 'O' IN 'ONE' - GOOD  
BACKSTAMPS. 290.-

36.41  
50.



OTHER INFORMATION

*Handwritten address in cursive script:*  
Mr. J. H. ...  
London

*P.P.*

PROUD MEMBER: APS (LIFE), RPSC, CSDA, FSDA, SDAG  
[www.CollectorsExchangeOnline.com](http://www.CollectorsExchangeOnline.com)

49

SEE OVER FOR BACKSTAMPS.

BLACK PLATE II PAIR.

1859

250.-

Description.....

.....LOOK ON REVERSE FOR FURTHER INFORMATION



London '6 in MX' cancel  
London/Edinburgh 1<sup>st</sup> July 1843  
(QG) SG #8, Spec BS16uf plate 27  
4 clear to good margins

£ 250<sup>-</sup>



Mrs A. Wmiston  
27 Green St.  
Edinburgh

C-Line.com  
Style #62058 1-888-860-9120

1846 MARY  
LETTER - FINE  
RECEIVED '15'



Post of Thomas Edge  
S. J. [unclear]



CODE

PROUD MEMBER OF: APS (LIFE), R. T. C., CSD, F. S. A., SDAG  
[www.C-Line.com/collectorexchange/online.htm](http://www.C-Line.com/collectorexchange/online.htm)

lib #

CROSS CHANNEL MAIL WITH  
4x PLATE 155 + PLATE 9 SHILLINGS  
MANCHESTER TO GIBRALTAR  
100



Via Bonifacio

Messrs Alexandropulo  
& Solbira  
Patras  
Greece

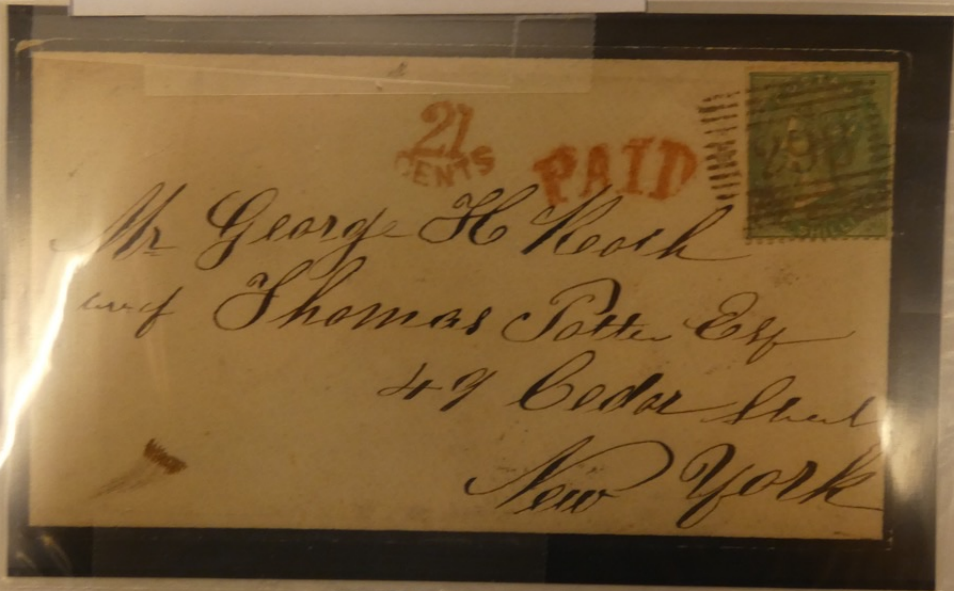
MANCHESTER

**TRANS-ATLANTIC MAIL**

COU

Sc # 28 ( SG# 72) tied by Rothesay numeral obliterator  
to mourning cover addressed to New York – the cover  
features red **PAID + 21 Cents** (US credit) + very fine  
Rothesay single arc CDS for Dec 10, 1861.  
Yours for **just \$300.00**

.....LOOK ON REVERSE FOR FURTHER INFORMATION



PROUD MEMBER: APS (LIFE), RPSC, CSDA, FSDA, SDAG

[www.CollectorsExchangeOnline.com](http://www.CollectorsExchangeOnline.com)

\$

**1890 UPU CARD WITH UNIQUE LATE FEE**

UPU card addressed to Paris with RARE LATE FEE handstamp. Dublin LATE FEE cancellers #71 to 74 are very scarce. Less than 100 examples are recorded of #72 & 3 are known. This is the ONLY recorded example of #71. It is rare & likely unique!

Ex Arthur White Exhibit

Yours for just \$150.00

THE ADDRESS ONLY TO BE WRITTEN ON THIS SIDE.

*Londres 11 Juillet 1890  
Honnre Monsieur*

*Monsieur Jules Desfosse  
223 Rue du Faubourg  
St Antoine  
Paris*

LONDON  
JUL 11 1890



**TRANS-ATLANTIC MAIL**

Sc # 28 ( SG# 72) tied by Rothস্য numeral obliterator to mourning cover addressed to New York - the cover features red PAID + 21 Cents (US credit) + very fine Rothস্য single arc CDS for Dec 10, 1861.  
Yours for just \$300.00

LOOK ON REVERSE FOR FURTHER INFORMATION

Country.....

Description.....

1880 QV 2½d rosy mauve plate 16 on folded letter to NY cancelled LONDON.E.C. JA 19 80. Blue NY P. O. FEB 3 ADVERTISED and D.S. No 1. Black s/l UNCLAIMED on face. Triangular Dead Letter Office and NY DLO cds of MAR 9 80 on reverse. File folds affect only London marking. F-VF. PHOTO ..... 200.....

FORMATION

John. H. Fisher



UNCLAIMED

Receiver.

South Carolina R. Rd. Co

D. S.  
No 1

New York

↓  
Dead Letter Office

69

TRANS-ATLANTIC MAIL

Originating in New York & addressed to C. Claxton - Managing Director of the GREAT WESTERN STEAMSHIP COMPANY, the FE was prepaid with lilac m/s '32' and traveled aboard SS HIBERNIA in Liverpool, where it was re directed to Bristol and a penny red applied, Featuring a V. cover of 2 arc CDS for Sep 13, 1843 and a good copy of the oval AMERICA undated hand stamp.

NJXGOZAP

Yours for just \$250.00



2244  
Bristol

C. Claxton Esq.

Managing Dir. G. W. S. Coy

~~Bristol~~  
~~2244~~

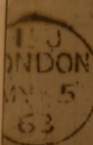
~~Liverpool~~

Hibernia

**INTERNATIONAL MAIL**

Sc # 39 tied to cover by London duplex dated May 5,  
1863, and addressed to MALTA with a May 15  
receiver on reverse.

**\$200.00**



Mess<sup>rs</sup> G Buttiqueg & Sons  
Malta



**TRANS-ATLANTIC MAIL**

Sc # 7 (SG # 59) was originally folded over the envelope edge.

Cover address to "WEST NORTH AMERICA" 1 & features m/s '1' with multi-colored 'REACH', 'WHITBY', and 'CHATHAM' transits + other hand stamps- nice item.

Yours for just \$450.00

REVERSE FOR FURTHER INFORMATION

Joseph Procter Long Bay  
Prince Alberts Postoffice  
Home District Compendium  
West North America

JA 24  
1-A



TRANS-ATLANTIC MAIL - PAISLEY  
DUPLIX TIES IN MARGIN ONE  
SHILLING. PUNTS & FEATURES RED  
BOSTON & BOLD & JOHNSTONE  
TRANSIT HAND STAMPS 200-

PAISLEY  
SP 28  
64



B. H.  
LONDON  
SP - 16  
60

Mrs Joseph Johnston  
Box 634 Post Office  
New Orleans  
South America

Answered 28th Sept 1860

Country: G.T. BRITAIN TRANSATLANTIC MAIL 1847 WITH 5.# 9 - 5.# 59.  
TIED BY NEW YORK POST OFFICE PAID BY THE EXCHANGE

86. 2055 CHANNEZ MAIL  
LONG TO VENICE WITH SC#  
45 PLT 112

90-

**ATLANTIC MAIL**  
originally folded over  
ape edge.  
BEST NORTH AMERIC/  
t-colored 'REACH', 'V'  
+ other hand stamp  
Yours for just \$

*[Faint, mostly illegible handwritten text on a yellowed paper insert]*

Venice



Monsr Pellegrino Ladoa,



*[Handwritten initials]*

1956  
612

Venice

STONE

Country... GT. BRITAIN ... ATLANTIC MAIL 1847 WITH S.# 5 - S.# 55.  
TIED BY NEW YORK ... PAID / 24 EXCHANGE  
OFFICE HAND STAMP ... CERTIFICATE ... LOOK ON REVERSE FOR FURTHER INFORMATION



PROUD MEMBER: APS (LIFE), RPSC, CSDA, FSDA, SDAG  
[www.CollectorsExchangeOnline.com](http://www.CollectorsExchangeOnline.com)

\$ 500.00

W. R. WEISS, JR.  
P.O. Box 5358  
Bethlehem, PA 18015  
(610) 691-6857

Opinion No. 11 515

Date 06/22/09

I have examined the enclosed Great Britain 5sh 1817  
(Scott #5) tied to 1853-use  
blue outer FLS to United States.

for McCloud Stamps & Covers

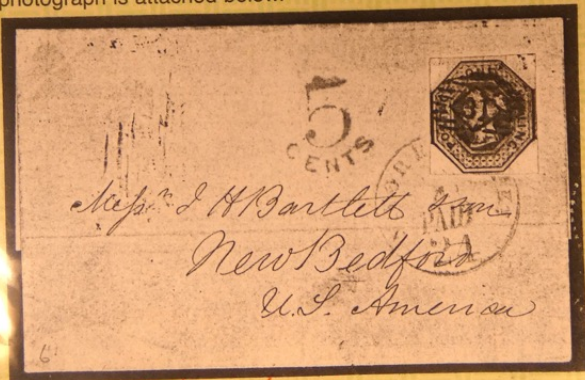
and my opinion is; \_\_\_\_\_

It is genuine in all respects, stamp

tied by red "N.York/24" Exchange Office

A photograph is attached below.

postmark.



Signed \_\_\_\_\_

W. R. Weiss, Jr.  
Member:

American Philatelic Society (Life Member)  
United States Stamp Society, U.S. Philatelic Classics Society  
U.S. Cancellation Club, U.S. Postal Stationary Society

Established 1972

1867-1870-5125

1867 CROSS CHANNEL  
FORWARDED STAMP  
REVOLVO - R. J. S.

**TRANS-ATLANTIC MOURNING MAIL**  
1860 with Sc# 28 tied by MALVERN duplex and addressed to Philadelphia with m/s "By 1<sup>st</sup>  
Steamer" & featuring red '21 cent' (US credit) & red "Phil - 24 - AM Pkt - Paid"  
Very fine and fresh  
Yours for just \$285.00



Repost

By 1<sup>st</sup> Steamer

Mr. S. A. Ripon  
at Messrs Bailey &  
819. Chestnut Street  
Philadelphia  
Pennsylvania  
United States



1964 CROSS C...  
FORWARDED BY STA...  
REVERE - 3c

**POSTAL STATIONARY - GREAT BRITAIN**

Nov. 23 1964 Registered letter addressed to Springfield, USA from Britain with 1 shilling  
QUADRUPLE RATE! Lovely 4 colour franking with Church & Sims Publishing Co. "C&S" perfins  
- pays the 2<sup>nd</sup> Reg. fee - underpays 10d quadruple UPU letter rate by 1/2d - undetected by post  
officials. Sent via SS LUCANIA with scarce London 'R-FEE PAID' hand stamp per UPU regs.  
Includes original letter - scarce rate and Very Fine item. Yours for just \$175.00

Registered  
Lucania



Mrs. A. Parker  
FEE PAID  
356 South Seventh St  
Springfield  
Ill. U.S.A.

59481

CROSS CHANNEL MAIL - 1870  
LONDON TO PARIS WITH FOUR  
PENNY (Sc# 43); RED  
PD IN CIRCLE - TRANSIT,  
FORWARDING MP. 140-

MAINTENANCE OF AMERICAN  
INSPECTOR OF PATENTS & FOREIGN TRADE  
95, LEADENHALL ST.  
LONDON

LONDON-EC  
5  
JUN 9  
70

71

RECEIVED  
JUN 9 1870

Monsieur Boudier  
Rue de la butte Chaumont  
Paris

1864 CROSS CHANNEL  
FORWARDER STAMP ON  
REVERSE - Sc.#55a 7500

GREAT  
SC # 49 - PLT 10  
1873 ON COVER  
WITH

PARIS  
1864

over  
FORWARDER



Messrs Goult & Co  
Paris

ENGL  
15  
APRIL  
64  
S.S. CALAIS

PD

\$

CROSS CHANNEL  
TO PARIS WITH  
T + RED 'PD'  
& PARIS REZ  
LONDON 10  
PLATE  
TRANSIT  
EVGKRSF.  
150.-



Messieurs Ogier & Frères

30 Rue des Petites Écuries

Paris

**ANTIC MAIL**

**GREAT BRITAIN (SCOTLAND) TO CANADA,  
SC # 49 - PLT 10 THE GLASGOW DUPLEX FOR MAY 8,  
1873 ON COVER ADDRESSED TO GRIMSBY, ONTARIO  
WITH RECEIVER DATED MAY 20.**

**YOURS FOR JUST 175.00**

LOOK ON REVERSE FOR FURTHER INFO



DA,SDAG

\$

1861 REDIRECTED MAIL TO  
FRAN CE. 5c. # 26 X 2 ADDED  
100-

France



J. F. Hughes Esq

~~52 Guildford Place~~

Hotel de Folkestone

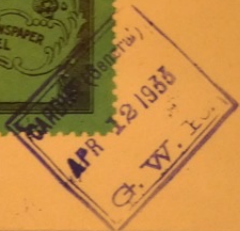
Boulogne sur Mer

Kennington

S.

75-

FIRST FLIGHT  
Great Western Railway  
Air Service  
South Wales to Devon  
12th April 1933



**BY AIR MAIL**  
PAR AVION

A PHILLIPS  
Four Dec...  
New... Mon

**BROOKLET V.C. CARD NO. 39**



*Patrick Anthony Porteous*

**T/Captain (later Colonel)  
Patrick Anthony Porteous V.C.  
Royal Regiment of Artillery  
Awarded the Victoria Cross on 19th August, 1942  
at Dieppe, France.**

Country .....

\$ 50 -

www.CollectorsExchangeOnline.com

C-Line.com  
Style #62058 1 888 886 9120

COLLECTORS  
EXCHANGE  
SINCE 1980



Con  
Sci  
Des

Year \_\_\_\_\_

CODE \_\_\_\_\_

Price \$ \_\_\_\_\_

PROUD MEMBER OF: APS (LIFE), NAPS, CSDA, SDIA, SDAG  
[www.CollectorsExchangeOnline.com](http://www.CollectorsExchangeOnline.com)

**LONDON SOUVENIR POSTCARDS**

Thomas Nelson & Sons beautiful postcards with handsome scenes from around the city. The outer shows considerable wear but the postcards are very fine.

Yours for **just \$15.00**

**LONDON  
AND  
ITS SIGHTS**



Thomas Nelson and Sons,  
LONDON, EDINBURGH, & NEW YORK.

34.0 NH

53.00