


EVERY HOME NEEDS  
**X-HOOKS**  
 THE PERFECT PICTURE HANGERS  
 3 sizes. 6d. and 1/- a box.  
 FROM ALL GOOD IRONMONGERS

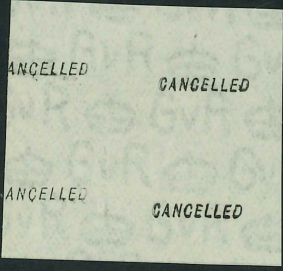


**TO SMOKE**  
 You can conquer  
 Improve your head  
 stomach trouble, no  
**Vigour, Calm N**  
 strength. Whether  
 get my interesting  
 posted free. Write  
 187, Strand (

Stamped -5 MAR 1935, 3/-  
 Booklet 291, Sheet of 6 1 1/2  
 d. CANCELLED Type 33P



GV 1924 (Feb), 1 1/2d, S  
 420, Type N6, N35, Red-  
 brown, Block Cypher,  
 Harrison, o.g., CANCELLED  
 Type 28, UMM, Trimmed





1912, N22, 3d, SPECIMEN  
Type 23



1912, N23, 4d, SPECIMEN  
Type 23



1913, N29, 9d Agate,  
SPECIMEN Type 26



1913, N 29, 9d, Deep Agate,  
SPECIMEN Type 26



1913, N31, 10d, Turquoise,  
SPECIMEN Type 26



1913, N32, 1/-, SPECIMEN  
Type 26



1924, N38, 3d, SPECIMEN  
Type 30



1924, N43, 9d, SPECIMEN  
Type 23



1924, N44, 10d, Imperf,  
SPECIMEN Type 23



1924, N45, 1/-, Imperf,  
SPECIMEN Type 23



D 25

1925, N35, 1 1/2 d, Control  
D25, SPECIMEN Type 15



1911, N1/2, 1/2 d,  
SPECIMEN Type 22



1912, N16, 1d, SPECIMEN  
Type 22, Booklets only



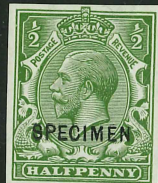
1911, N1/2, 1/2 d,  
SPECIMEN Type? From  
UPU Rhodesia?



1911, N7, 1d, Die 1a,  
SPECIMEN Type? From  
UPU Rhodesia?



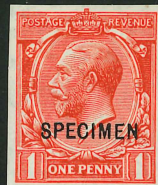
1911, N14, 1/2 d,  
SPECIMEN Type 23



1911, N14, 1/2 d, Imperf,  
SPECIMEN Type 26



1912, N16, 1d, Imperf,  
SPECIMEN Type 26



7/29  
= 26  
7d.



1924, N35, 1 1/2 d,  
SPECIMEN Type 23,  
Booklet.



1912, N18, 1 1/2 d,  
SPECIMEN Type 23



1912, N19, 2d, SPECIMEN  
Type 26



1912, N21, 2 1/2 d,  
SPECIMEN Type 23



5/6, Waterlow &

SPECIMEN Type 26

1913, N66, 5/-, Waterlow &  
Layton,  
SPECIMEN Type 26



1913, N63, 5/-, Dull Grey  
Blue, Bradbury, Wilkinson,  
SPECIMEN Type P  
For Telegraphic use.



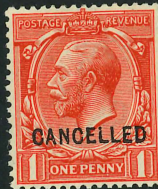
1924, N33, 1/2 d,  
CANCELLED Type 33,  
Booklet



1924, N34, 1d,  
CANCELLED Type 33,  
Booklet



1924, N33, 1/2d,  
CANCELLED Type 24



1924, N34, 1d,  
CANCELLED Type 24



1935, N47, 1/2 d,  
CANCELLED Type 33P



1924, N49, 1d,  
CANCELLED Type 33P



1924, N34, 1d, Wmk Inv,  
CANCELLED Type 28



1924, N51, 1 1/2 d,  
CANCELLED Type 33P



1924, N35, 1 1/2 d, #24  
CANCELLED Type 28



1934, N53, 1 1/2 d,  
CANCELLED Type 33



1913, N31, 10d,  
CANCELLED Type 24



1936, N61, 10d,  
CANCELLED Type 33