

II. NEAPOLITAN PROVINCES

1861



Inverted franc.

NEW CALEDONIA

French Colonial stamps surcharged. "Peace and Commerce" type. Imperf. 1881



Grey-black

"5" on 40 c. Red on yellow

"25" on 75 c. Rose

On 40c., red on yellow

Lower margin (Row 2, 184) 1881

1886

Peace & Commerce type 1891

1886

"Commerce" type. Perf. 1891



On 40 c., red on yellow

Olive-green

On 40 c., red on yellow

On 30 c., cinnamon on drab

1892. "Commerce" type overprinted. Perf.



2 c. Brown on buff



20 Green



15a

Not issued

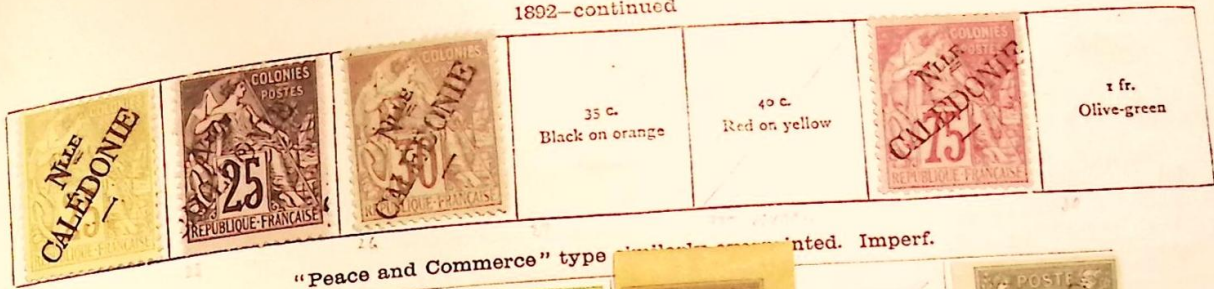
Not issued

21

22

NEW CALEDONIA—continued

1892—continued



"Peace and Commerce" type *not issued* Perf.



"Peace and Commerce" type similarly surcharged. Imperf.

1892-93. "Commerce" type surcharged. Perf.



"10" on 1 fr., olive-green

1892. Perf. Name in red or blue



Black on azure



1900. As last. Colours changed



1900-2. Stamps of 1892 surcharged



Lilac on grey

(30 c.) Cinnamon on drab

NEW CALEDONIA—continued

1903. Stamps of 1892 or 1900 overprinted in red, blue, gold, or black



On 1 c., black on azure



As last, but with new value added within inscription in blue



1905. Perf.



Black on green



Red on green



Carmine on azure

1912. Stamps of 1892 surcharged in black or red



102 A 0

102/6 * All arrow spacing

111 C

NEW CALEDONIA—continued

1915. Surcharged in red



"5 c." on 10 c., red

Stamps of 1905
1915-16. Surcharged **+5c** in red



In red



1922. As 1905



Surcharged



1924-27. As 1905. Surcharged in black or red



1925-28. As 1905



1928. Perf.



Blue and purple



NEW CALEDONIA—continued

1928—continued



Green



Scarlet and drab



1931. Colonial Exhibition stamps. As Cameroons but overprinted "NLE CALEDONIE"



1932. Stamps of 1928 overprinted



1933. As 1928. New values





7137/9 (1926)



9179/81 (1930)



211/16 (1937)



NEW CALEDONIA—continued

1933. Stamps of 1928 and 1932. Overprinted



NEW HEBRIDES

ISSUED BY FRANCE

*Island group in SW Pacific - joint Anglo-French influence.
Created a Condominium in 1866.*

1908. Stamps of New Caledonia overprinted, in black. Perf.

With NOUVELLES
HEBRIDES

With NOUVELLES-HEBRIDES



F 1 Green

F 2 Blue on green



F 3 Blue on green

1910. Stamps as last overprinted "CONDOMINIUM" in addition. Perf.



1911. Wmk Crown CA. Perf.



F 11



F 20

F 21

1912. As last. Wmk "FR" once on sheet or without w/mk.



F 22/22

F 23

F 25



NEW HEBRIDES—continued

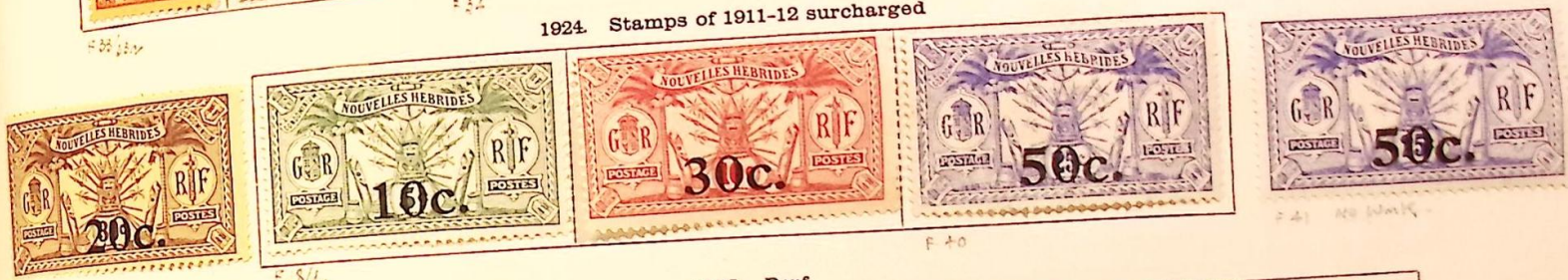
1912—continued



1920. Stamps of 1908-12 surcharged



1924. Stamps of 1911-12 surcharged



1925. Perf.



Black



1925/26

NICARAGUA

1862. Perf.



Brown

Black

Red

Green

1877. As last. Rouletted

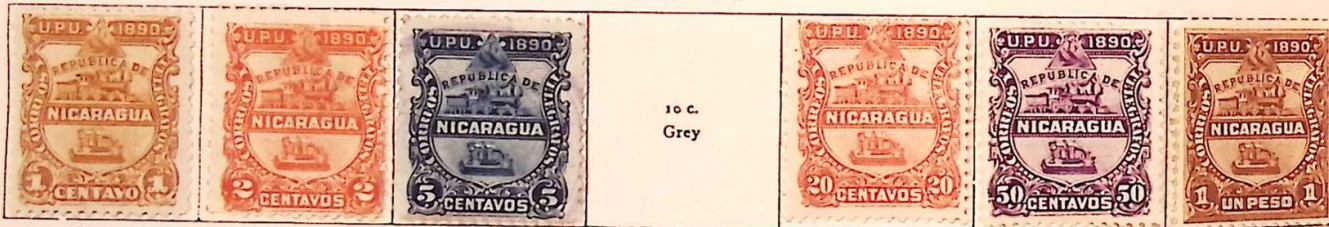


1882. Perf.



Green

1890. Perf.



10 c.
Grey

Brown

See book Issues 1890-1899 vol 1 Cat.

1891. Perf.



20 c.
Lake



NICARAGUA—continued

1892. Perf.



Brown



1893. Perf.



Brown



1894. Perf.



Brown



1895. Perf.



Brown



1896. Perf.



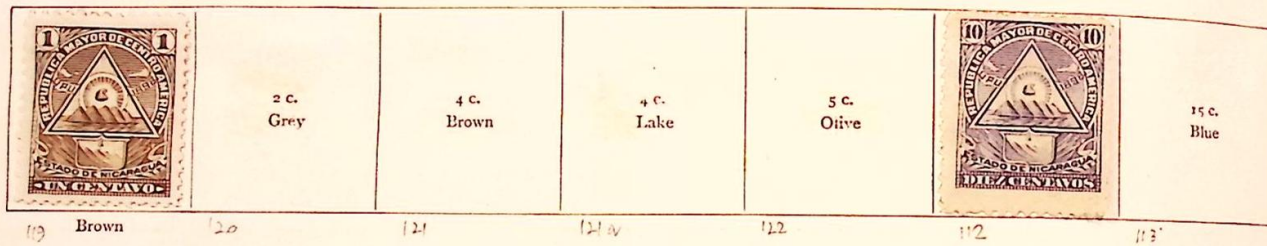
NICARAGUA—continued

1896—continued

1897. As last, dated "1897"



1898. Perf.



1899. Perf.



Brown

1216
Edge Sebeck's issue

1800. Perf.



Red

114

115

NICARAGUA—continued

1900—continued



1901. As last, surcharged in black or red

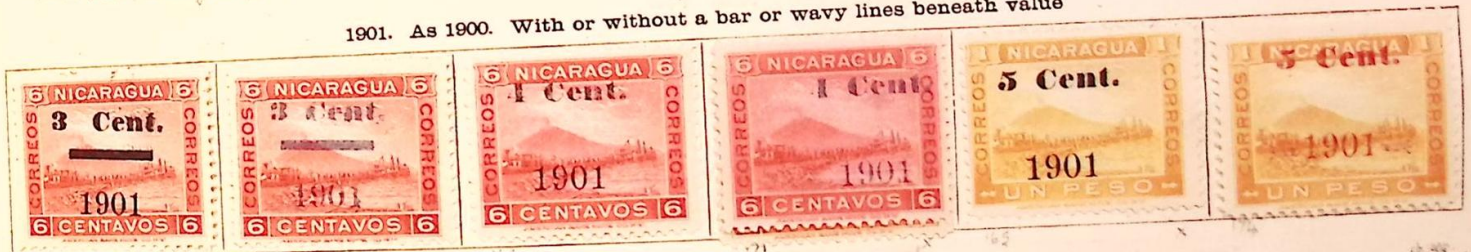


1901. Overprinted in black



Orange-red

1901. As 1900. With or without a bar or wavy lines beneath value

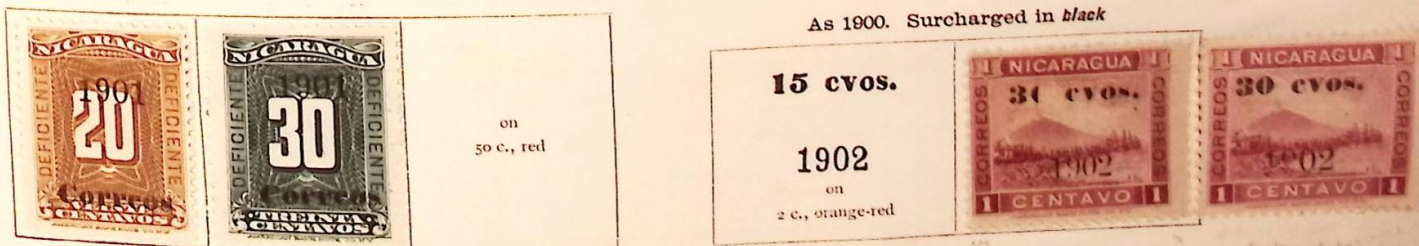


As 1901. Overprinted in black



on
10 c., mauve

As 1900. Surcharged in black



on
50 c., red

15 cvos.

1902

on
2 c., orange-red

30 cvos.

30 cvos.

Broken 30 Surcharged

Broken 30

NICARAGUA—continued

1903. Perf.



139

Black and red

As 1900. Surcharged in black or bronze-blue (15 c.)



261

As 1900. Surcharged in black or bronze-blue (15 c.)

1904-5. As 1900, surcharged in blue or black



not issued



203

203a Value by



204



205

Spot on EN. 7



not issued

1905. Perf.



219

220

221

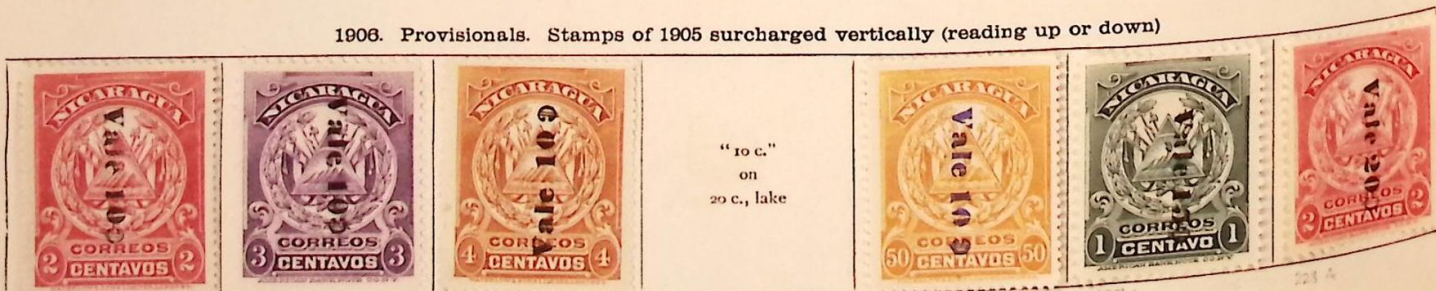


222

223

224

1906. Provisionals. Stamps of 1905 surcharged vertically (reading up or down)



225

226

227

228

229

230

231

1906--continued



1908. Provisionals. Small Fiscal stamps overprinted or surcharged

Overprinted **CORREO-1908** vertically, in black or green

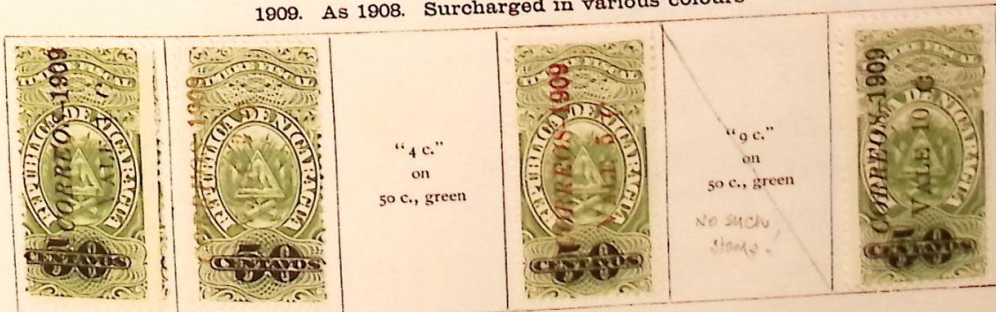
Surcharged as **CORREO-1908** vertically, **VALE 4 9** in various colours



1908-9. Surcharged **CORREOS-1908** vertically, in black



1909. As 1908. Surcharged in various colours



NICARAGUA—continued

1909. As 1905, but new colours. Perf.



1910. As last, surcharged in black or red



1911. As 1908, surcharged in black



1911. Small Fiscal stamps, as 1908, surcharged in black



1911. Railway stamps surcharged for Fiscal use on face, and for Postage on back, in black



"2 c. on 5 c." on 2 c., blue
issued without sur.

Same stamps overprinted vertically downwards for Fiscal use, and afterwards horizontally for Postage
Postal surcharge in blue
In black



"2 c. on 10 c." on 1 c., vermilion

"2 c. on 10 c." on 1 c., vermilion

"10 c. on 10 c." on 1 c., vermilion

Postal surcharge in black



Postal surcharge in red



1912. Perf.



Green



1913. As last. Surcharged



Brown and green

Stamps of 1912 surcharged in black or red



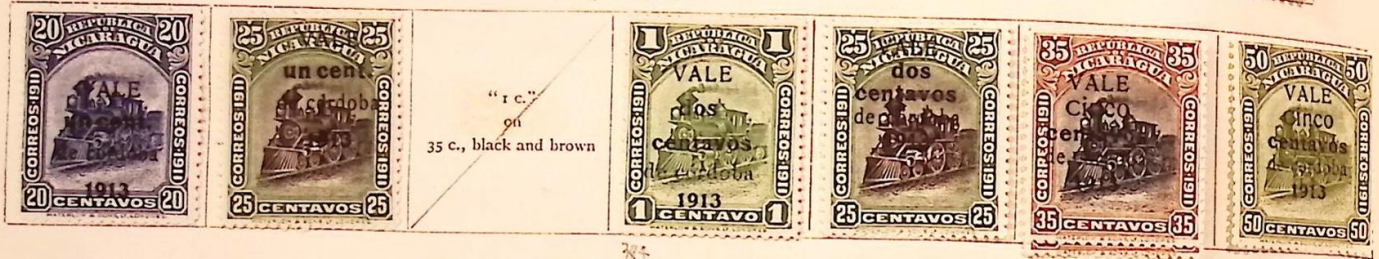
NICARAGUA—continued

As last—continued



"2 c."
on
10 c., brown

1913. Stamps for province of Zelaya. 1912 (Locomotive), similarly surcharged

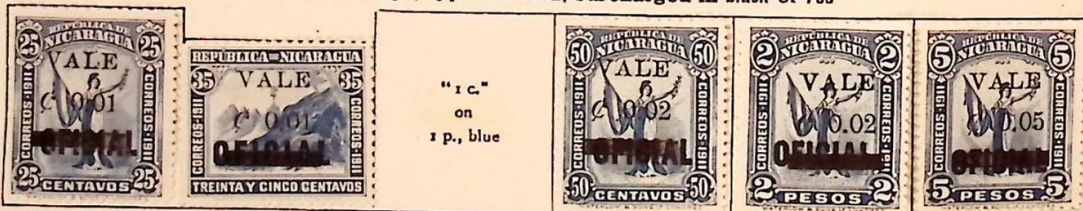


"1 c."
on
35 c., black and brown

1914. Stamps of 1912 surcharged 1 ct. Cordoba
Correos 1913



Official stamps, types of 1912, surcharged in black or red



"1 c."
on
1 p., blue

1914. Perf.



5 c.
Slate



Vermilion

NICARAGUA—continued

1918. Stamps of 1914 surcharged in words as shown

1914. As last, surcharged



"medio centavo" on 6 c., brown		"medio centavo" on 15 c., violet	"medio centavo" on 25 c., orange	"medio centavo" on 50 c., blue
--------------------------------------	--	--	--	--------------------------------------

"un centavo" on 3 c., chocolate	"un centavo" on 6 c., brown	"un centavo" on 10 c., yellow	"un centavo" on 15 c., violet	"un centavo" on 20 c., black	"un centavo" on 25 c., orange
---------------------------------------	-----------------------------------	-------------------------------------	-------------------------------------	------------------------------------	-------------------------------------

"un centavo" on 50 c., blue	Vale dos centavos de córdoba on 4 c., scarlet	"dos centavos" on 6 c., brown	"dos centavos" on 10 c., yellow	"dos centavos" on 20 c., black	"dos centavos" on 25 c., orange
-----------------------------------	--	-------------------------------------	---------------------------------------	--------------------------------------	---------------------------------------

As last, but value in figures

"cinco centavos" on 6 c., brown	"cinco centavos" on 15 c., violet	"1 c." on 3 c., chocolate	"2 c." on 4 c., scarlet	"5 c." on 15 c., violet
---------------------------------------	---	---------------------------------	-------------------------------	-------------------------------



As above, but larger

"un centavo" on 2 c., vermilion

1919. Officials of 1915 surcharged

Vale un centavo de cordoba on 25 c., blue	"dos centavos" on 50 c., blue	"diez centavos" on 20 c., blue
---	-------------------------------------	--------------------------------------

1921. Surcharged

OFFICIAL on 1 c., blue (Official, 1912)	5 c. Blue (Official, 1912)
---	----------------------------------

1921. Officials of 1915 surcharged

OFFICIAL Vale medio centavo de córdoba on 2 c., blue	"medio centavo" on 4 c., blue	"un centavo" on 3 c., blue
---	-------------------------------------	----------------------------------

Stamp of 1914. Surch.

Vale medio centavo on 5 c., slate
--

Officials of 1915 surcharged

«Particular» R de C on 1 c., blue	Vale un centavo R de C on 5 c., blue
--	---

1921. Centres in black. Perf.

"un centavo" on 6 c., blue	"un centavo" on 10 c., blue	"un centavo" on 15 c., blue
----------------------------------	-----------------------------------	-----------------------------------




Green

NICARAGUA—continued

1921—continued

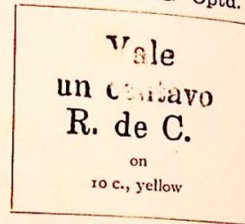


1921. Fiscal stamps surcharged




"o,oi" on 1 c., red	"o,oi" on 2 c., green		"o,oi" on 15 c., blue
---------------------------	-----------------------------	---	-----------------------------

Orange

1922. As 1914. Optd.



1922. As 1914. Perf.

3 c. Green			3 c. Olive		20 c. Brown
---------------	--	--	---------------	--	----------------

Violet

Carmine

R. de C.
Vale un centavo

1922. As 1921 (Portraits) surcharged



on 1 c., green	on 5 c., blue	on 10 c., orange	on 25 c., yellow	on 50 c., violet
-------------------	------------------	---------------------	---------------------	---------------------

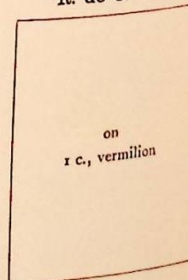
1922-23

As 1921. (Fiscal stamp). Overprinted "R. de C." only

As 1914. Perf.

Overprinted "R. de C." only

Surcharged "Nicaragua R. de C. Vale un centavo" in red or blue



(6 c.) brown-red

Violet

Mauve

on


Issued without gum

NICARAGUA—continued

1923. Stamps as before, overprinted or surcharged in black or red

Stamps of 1921

<p>Vale 0.01 de córdoba on 10 c., yellow</p>	<p>"Vale 0.02" on 10 c., yellow</p>	<p>"1 centavo" on 5 c., slate</p>	<p>Vale 2 centavos de córdoba on 10 c., yellow</p>	<p>Sello Postal 1 c. Black and blue</p>	<p>Black and green</p>
--	---	---	--	---	------------------------

<p>R. de C. Vale un centavo de córdoba on 2 c., black and red</p>	<p>On 5 c., black and blue</p>	<p>On 10 c., black and orange</p>		<p>On 50 c., black and violet</p>
---	------------------------------------	---------------------------------------	--	---------------------------------------

1924. Perf.

1924. As 1914
Overprinted in blue

<p>R. de C. 1924 on 1 c., violet</p>
--



Carmine

1927. Stamps of 1914, 1922 and 1926 overprinted Resello 1927 in various colours

1925. As 1914
Overprinted in blue

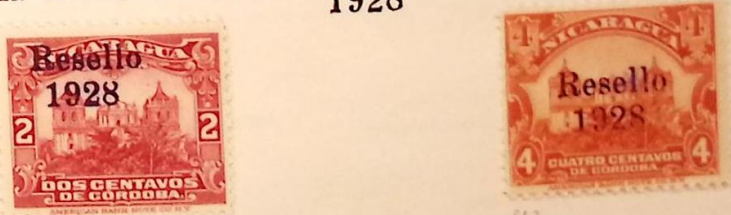
<p>"R de C 1925" on 1 c., violet</p>
--

1926. As 1914
Overprinted in blue

<p>R. de C. on 1 c., violet</p>



1928. As last, but overprinted Resello 1928 in violet



NICARAGUA—continued

1928—continued

Overprinted **Correos** in violet
1928



As 1914 and 1922. Colours changed

<p>½ c. Vermilion</p>	<p>1 c. Orange</p>	<p>2 c. Yellow-green</p>	<p>3 c. Purple</p>		<p>5 c. Yellow</p>
<p>6 c. Light blue</p>		<p>15 c. Carmine</p>		<p>25 c. Sepia</p>	

1928-29. Fiscal and Telegraph stamps, as 1921, surcharged in various colours



Correos
1928
Vale 1 cent.

Correos
R. de C.
Vale 1 cent.

Correos 1929
C\$. 0.01



Perf.

As 1924. Overprinted in violet

1929

Air stamps. As 1928. Overprinted in red




(1 c.) plum



NICARAGUA—continued

As 1923. Colours changed

As 1928. Overprinted in various colours

<p>R. de C. 1 c. Orange</p>		<p>1 c. Olive-green</p>	<p>2 c. Light blue</p>	<p>5 c. Olive-brown</p>	<p>25 c. Violet</p>
-------------------------------------	---	-----------------------------	----------------------------	-----------------------------	-------------------------

1929-31. Air stamps. Perf.


As last. Overprinted

<p>R. de C. 1 c. Olive-green</p>	<p>15 c. Purple</p>		
--	-------------------------	--	---

1930. As last. Surcharged

			<p>"20 c" on 25 c., blackish green</p>
--	--	---	--

1930. Post Office Commemoratives. Perf.

	<p>1 c. Carmine</p>	<p>2 c. Vermilion</p>	<p>3 c. Orange</p>	<p>4 c. Yellow</p>	<p>5 c. Olive-green</p>
---	-------------------------	---------------------------	------------------------	------------------------	-----------------------------

Sepia

<p>6 c. Blue-green</p>	<p>10 c. Slate</p>			
----------------------------	------------------------	---	--	---

1931. Portrait stamp of 1924, overprinted **Correos 1928**

Stamps as before, overprinted 1931

<p>Overprinted 1931 10 c. Brown</p>	<p>Surcharged in addition 1931 10 Correos 10 DIEZ CENTAVOS DE CORDOBA</p>		
---	---	---	--

NICARAGUA—continued

1931. Stamps as 1914. New colours



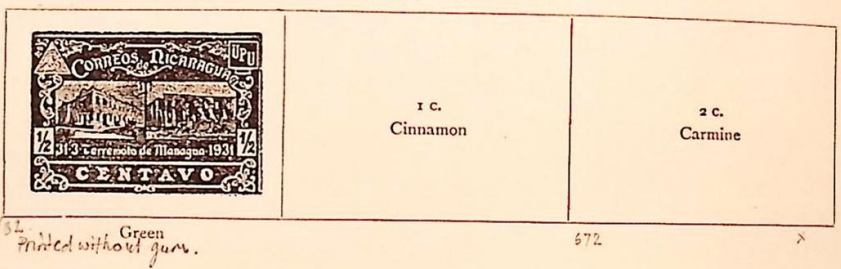
Air stamps of 1929 and 1931. Surcharged



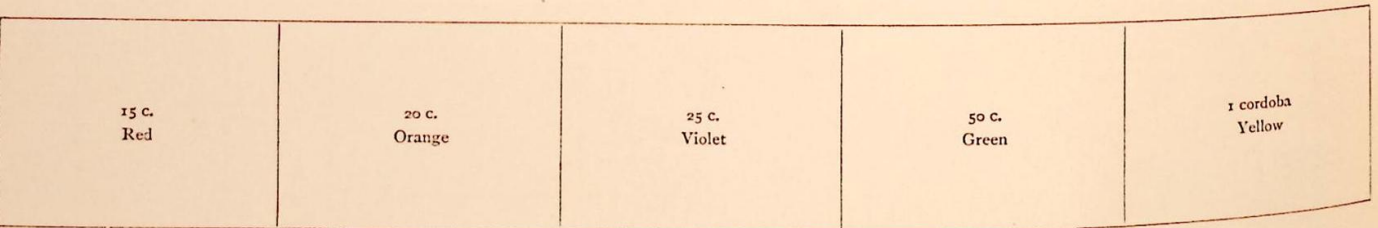
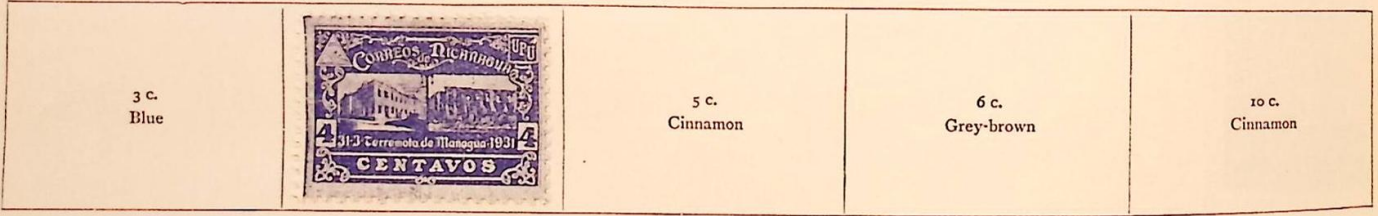
Provisional of 1930. Surchd. as last



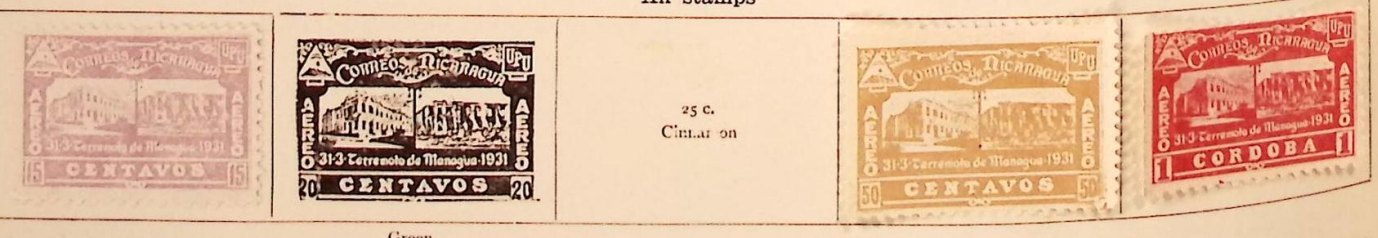
1932. Perf.



670/52 Green
Printed without gum.

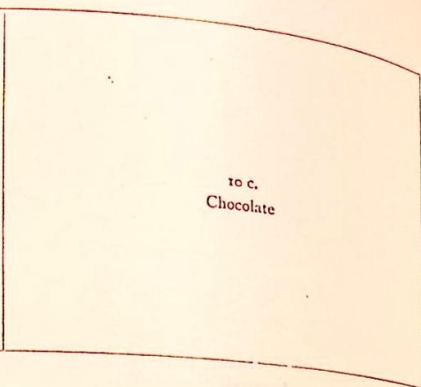
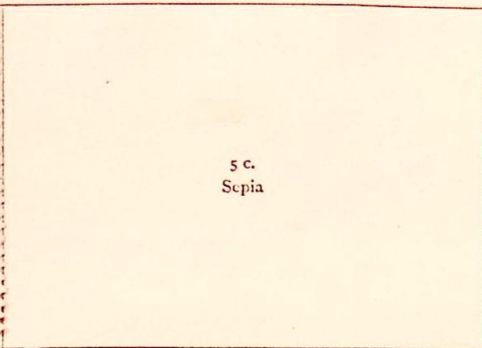


Air stamps



Green

1932—continued



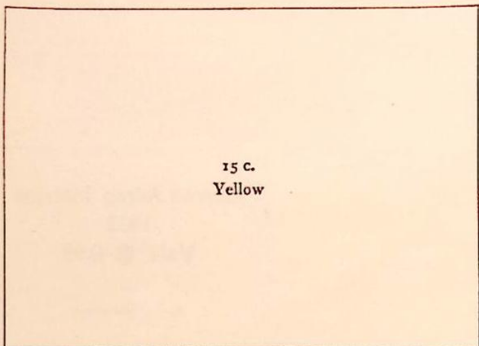
5 c.
Sepia

10 c.
Chocolate

727 Not used used.
 Cancel day before inauguration as per stamp,
 24/10

725

Air stamps



15 c.
Yellow



721/5 Issued without gum
 not listed used

32



723

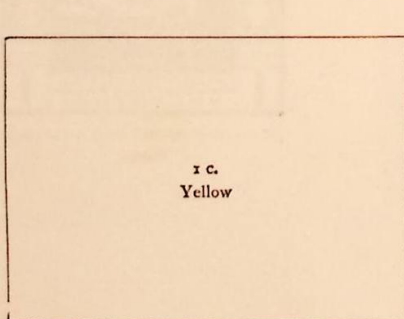


724

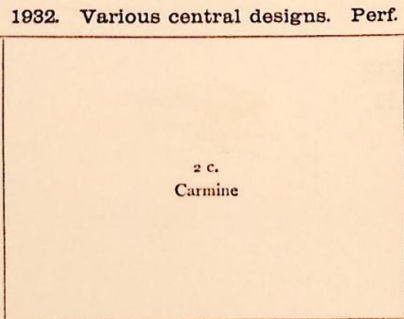


725

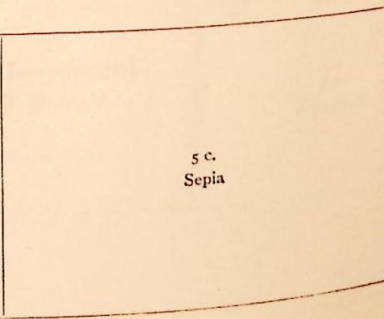
1932. Various central designs. Perf.



1 c.
Yellow



2 c.
Carmine



5 c.
Sepia

739/43

NICARAGUA—continued

1932—continued

Air stamps




10
CORREOS DE NICARAGUA
10
CORTEJES

(Illustration reduced to 2/3 actual size)
Chocolate

15 c.
Yellow

15 c.
Violet



25
CORREO AEREO
DE NICARAGUA
25

(Illustration reduced to 2/3 actual size)
Chocolate

20 c.
Green

50 c.
Sepia

1 cordoba
Carmine

Pictorial stamps as 1931. Surcharged



2
CORREO AEREO
Interior-1932
Vale \$ 0.01
DOS CENTAVOS
DE CORDOBA

3
CORREO AEREO
Interior-1932
Vale \$ 0.02
TRES CENTAVOS
DE CORDOBA

4
CORREO AEREO
Interior-1932
Vale \$ 0.04
CUATRO CENTAVOS
DE CORDOBA

5
CORREO AEREO
Interior-1932
Vale \$ 0.05
CINCO CENTAVOS
DE CORDOBA



6
CORREO AEREO
Interior-1932
Vale \$ 0.06
SEIS CENTAVOS
DE CORDOBA

10
CORREO AEREO
Interior-1932
Vale \$ 0.10
DIEZ CENTAVOS
DE CORDOBA

15
CORREO AEREO
Interior-1932
Vale \$ 0.08
QUINCE CENTAVOS
DE CORDOBA

20
CORREO AEREO
Interior-1932
Vale \$ 0.16
VEINTE CENTAVOS
DE CORDOBA

25
CORREO AEREO
Interior-1932
Vale \$ 0.20
VEINTICINCO CENTAVOS
DE CORDOBA

25
CORREO AEREO
Interior-1932
Vale \$ 0.25
VEINTICINCO CENTAVOS
DE CORDOBA

Overprinted 1931 in addition



50
CORREO AEREO
Interior-1932
Vale \$ 0.30
CINCUENTA CENTAVOS
DE CORDOBA

50
CORREO AEREO
Interior-1932
Vale \$ 0.40
CINCUENTA CENTAVOS
DE CORDOBA

1
CORREO AEREO
Interior-1932
Vale \$ 0.50
UN CORDOBA

1
CORREO AEREO
Interior-1932
Vale \$ 1.00
UN CORDOBA

"24 c."
on
25 c., violet

"25 c."
on
25 c., sepia

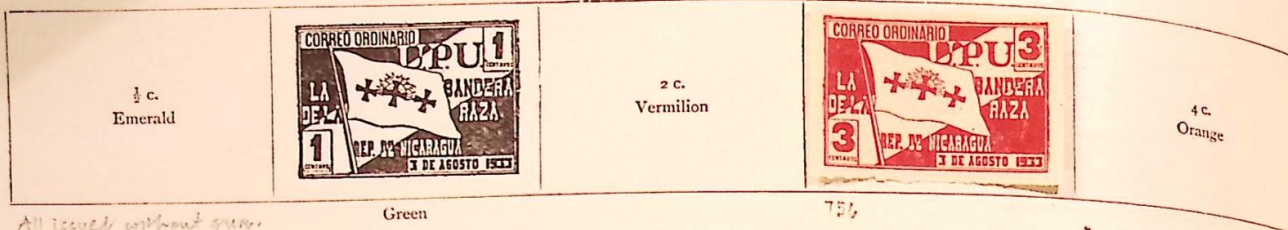
1933. Pictorial stamps as 1931. Surcharged

Vale un centavo on 3 c., light blue	"2 c." on 4 c., blue	"1 c." on 3 c., light blue	"1 c." on 5 c., olive-brown	Resello 1933 Vale Dos Centavos on 10 c., chocolate
--	----------------------------	----------------------------------	-----------------------------------	--

NICARAGUA—continued

1933. Rouletted

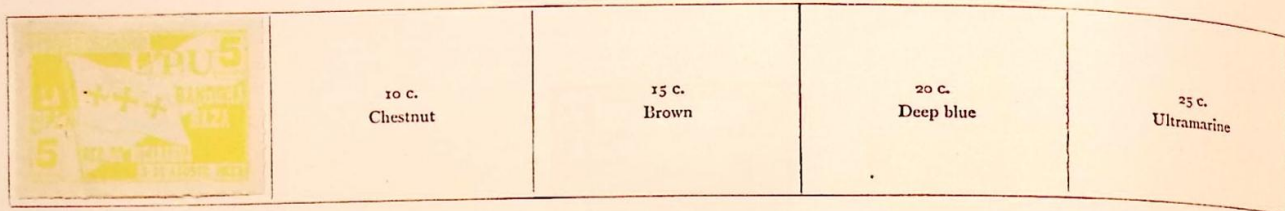
Postage stamps



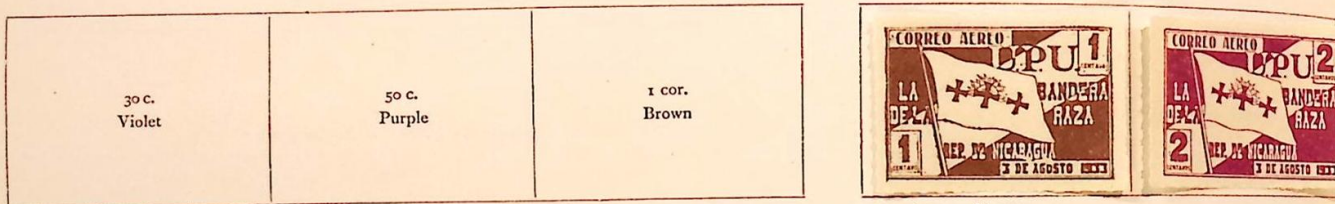
All issued without gum.

Green

754



Air stamps



766/76 Brown



Air stamps of 1929 in new colours. Surcharged as in 1931 without "1931" in surcharge



791/4

NICARAGUA—continued

mps. Perf.




Brown



1934. Stamps as 1931. Overprinted only

<i>De hoy</i> <i>de hoy</i> ½ c., deep green	1 c. Olive	2 c. Carmine	3 c. Light blue	4 c. Deep blue
--	---------------	-----------------	--------------------	-------------------

	6 c. Drab	10 c. Chocolate	15 c. Vermillion	20 c. Orange
---	--------------	--------------------	---------------------	-----------------

Fiscal stamp as 1929.
With "signatures" opt.

25 c. Violet	50 c. Yellow-green	1 cor. Yellow	Same type with additional overprint R. de C. 1 c. Orange	1 c. Orange
-----------------	-----------------------	------------------	---	----------------

1934-35. Air stamps of 1929 and 1931. Surcharged



1935. Stamps as 1931. Overprinted

Reselio 1935 1 c. Blackish green	2 c. Carmine	1 c. Orange
--	-----------------	----------------

NICARAGUA—continued

1904-8. SPECIAL ISSUES FOR THE PROVINCE OF ZELAYA

Various issues of Nicaragua overprinted "B (or C) Dpto. Zelaya" or "COSTA ATLANTICO B (or C)" or "CABO"

Cabo Gracias A Dios Issues



b27 c.49



b44



b27/3

b21

General Issues.

1912. Perf.

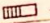


21 Green



NICARAGUA—continued



NIKARAGUA — NICARAGUA


1896  ~ NACHP-M.

		5 Centavos	10 Centavos			
---	---	------------	-------------	--	---	---

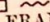
Sämtl. orange | All in orange | Toutes les val. orange
0 22 A / 12

1897  ~ (Jahreszahl | Date | Millésime 1897)

		5 Cincos Centavos	10 Diez Centavos	20 Veinte Centavos	50 Cincuenta Centavos
violett violet 0 122	grün green vert 0 127	rosa rose	blau blue bleu	braun brown brun	graublau grey blue bleu-gris

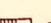
1897  ~ (Jahreszahl | Date | Millésime 1897)

		5 Cincos Pesos
schwarz black noir 0 124	weinrot claret lie de vin	blau blue bleu

1897  ~ (Jahreszahl | Date | Millésime 1897) (× FRANQUEO OFICIAL) DIENSTM.


		5 Cincos Centavos
--	---	-------------------



Sämtl. rot | All in red | Toutes les val. rouge
0 125 A / 12

1897  ~ (Jahreszahl | Date | Millésime 1897) (× FRANQUEO OFICIAL) DIENSTM.

				2 Dos Pesos	5 Cincos Pesos
---	---	---	---	-------------	----------------

Sämtl. rot | All in red | Toutes les val. rouge
0 127

1897  ~ NACHP-M.

		5 Centavos	10 Centavos	20 Centavos	30 Centavos	50 Centavos
---	---	------------	-------------	-------------	-------------	-------------

Sämtl. violett | All in violet | Toutes les val. violet
0 128 A

NICARAGUA—continued



Postal Stamp



078 (9)



1886 033/07 '4



073

0153



072

073

333 (137)



NICARAGUA—continued

II. With "Cabo" overprint—continued
 1909. Stamp of 1905 overprinted **CABO** vertically in black

Cancelled without gum - Railway Stamp - Fiscal front - postage on back of stamp.

vale
2 cts.
CORREO
DE 1911

vale
2 cts
CORREO
DE 1911

vale
2 cts.
CORREO
DE 1911

Vale
05 cts
CORREO
DE 1911

vale
05 cts.
CORREO
DE 1911

vale
05 cts
CORREO
DE 1911

319/22

vale
10 cts
CORREO
DE 1911

vale
10 cts
CORREO
DE 1911

Vale
10 cts
CORREO
DE 1911

vale
15 cts.
CORREO
DE 1911

Vale
15 cts
CORREO
DE 1911

vale
15 cts
CORREO
DE 1911

Vale
~~15 cts~~
CORREO
DE 1911

1911 Railway Cupon Stamp surcharged 6334/9 Set.



1903 Set of 5



0197

0198 d

0199

0200

0201

4-45

NICARAGUA—continued

II. With "Cabo" overprint—continued

1909. Stamp of 1905 overprinted CABO vertically in black



Bluefield Issues



NICARAGUA—continued

I. "Zelaya" overprint—continued
1909

Stamps of 1909 (new colours) overprinted in black



As above, but with different overprint, in black

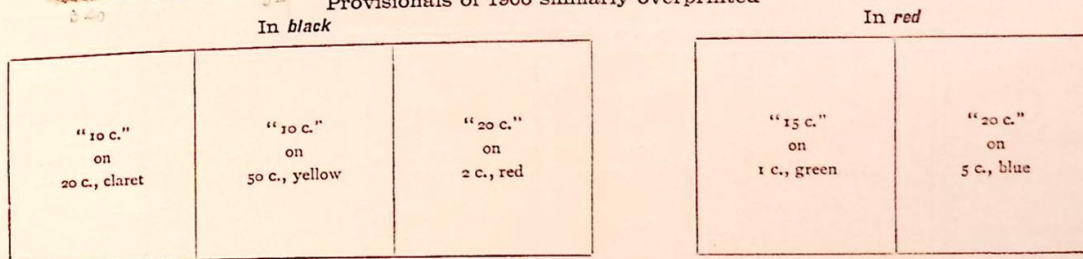


NICARAGUA—continued

I. "Zelaya" overprint—continued
 Stamps of 1905 overprinted in black or red



Provisionals of 1906 similarly overprinted



Stamps of 1905, specially surcharged, similarly overprinted in black
 As 1906 Provisionals



1908. Provisionals (small Fiscal stamps) similarly overprinted



Vertically, in green



NIGER TERRITORY

1921. As Upper Senegal and Niger, 1914, overprinted



1922-25. Surcharged in black or red



1925-26. As 1921. Colours changed



NIGER TERRITORY—continued

1926-28. Perf.



Black and brown



Brown and blue-green



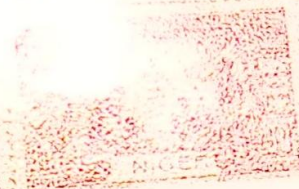
Green and rosine

1933. New values

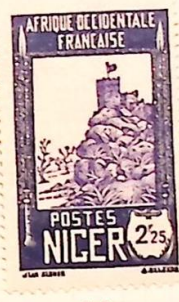


NIGER TERRITORY—continued

1931. Colonial Exhibition stamps. *Not overprinted "NIGER"*



Extra Values.



31 1939

60 1939

61 1940

67 1939

68 1940



42 1938



47 1938



48 1940



50 1946



52 1938



54 1939



46



45



43



45

*Complete set of 44
62-72*

5 gr.
Bistre

1868-69

Perf.



1 kr.
Green

Perf.



Blue

212

214

1931. Colonial Exhibition stamps. As Camerons but overprinted "NIGER"

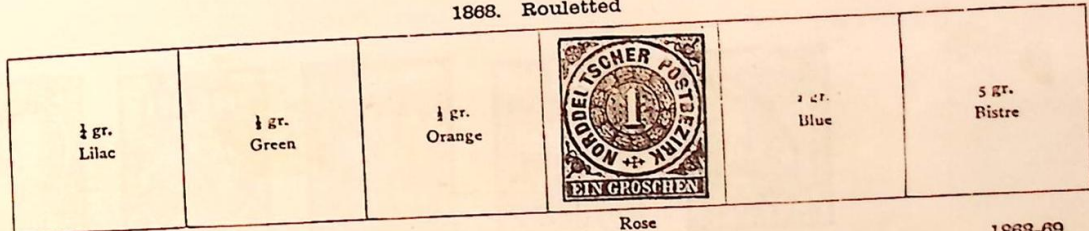


2125
(21)



NORTH GERMAN CONFEDERATION

1868. Rouletted



Rose

Rouletted

1868-69

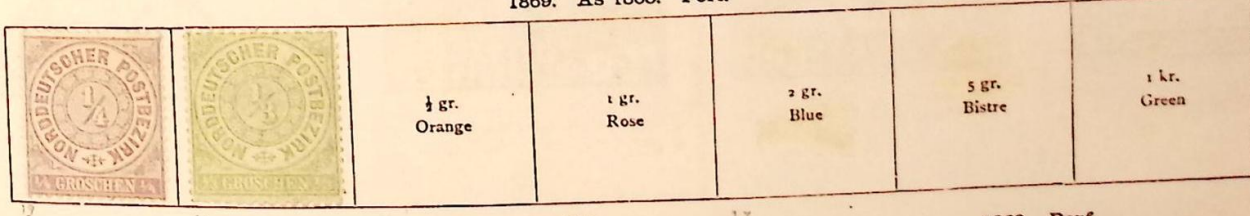
Perf.



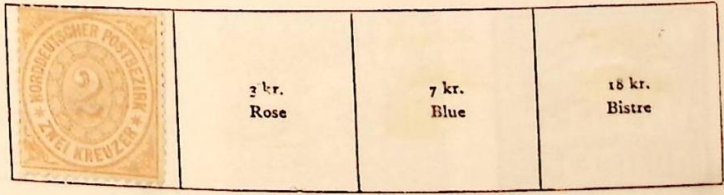
Rose

(1 sch.) Claret

1869. As 1868. Perf.



1869. Perf.



Grey

Blue

1926. Perf.



Red

110
Revised 1/2 Cat.

1927. As last. Surcharged in red or black



11/12
Revised

On 3 r., claret

1927. Perf.



15/25
Brown, red and black

Brown, green and violet

Green, yellow and black

Brown and blue

Blue, black and red



Sepia, blue and claret



Scarlet, black and green



Red and blue



23/25
Violet and blue



Chocolate and green



25/26
150/11

Green and carmine

26/27
80/11

Claret, black and green

Bistre and scarlet

NORTH MONGOLIA—continued

1927—continued

1924
86 43.50
24.1000



1924
86 43.50
24.1000



5/2 Larger 60x30mm

NORTH MONGOLIA—continued

1927—continued

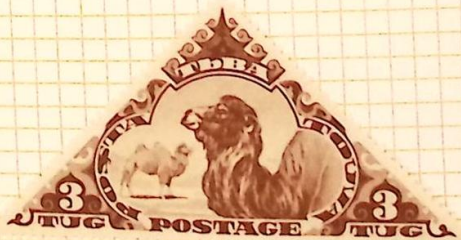
1927
22/30
1935
38 61/7



NORTH MONGOLIA—continued

1927—continued

1927
1935
26 88 77



NORTH MONGOLIA—continued

1927—continued

1927
86 4369
4/1/27



NORTH MONGOLIA—continued

1927—continued



Violet and brown

1932. As 1927. Variously surcharged or overprinted only



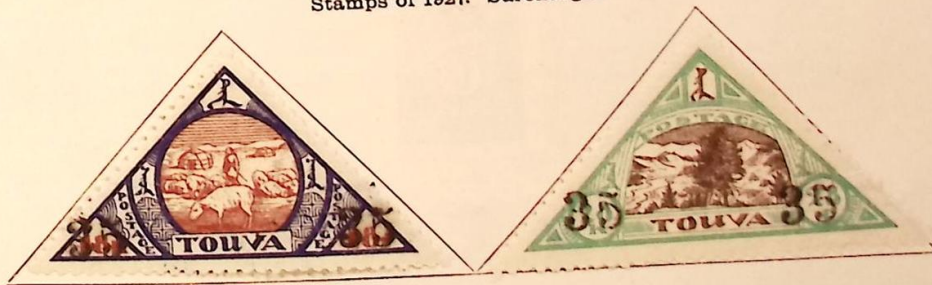
25 1/2 Surcharged in Moscow.

1933. Fiscal stamps. Surcharged. Perf.



37 Red Black Surcharge. 38 Red copy

Stamps of 1927. Surcharged



37 1/2 Surcharged by numbering machine. Perf 10 1/2

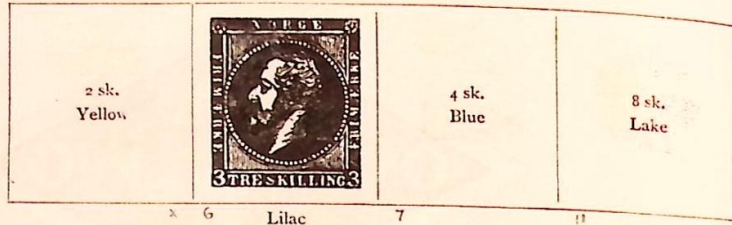
NORWAY

1855. Wmk. "Lion." Imperf.

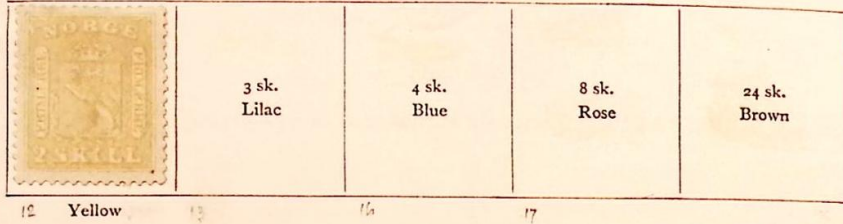


Blue

1856. Perf.



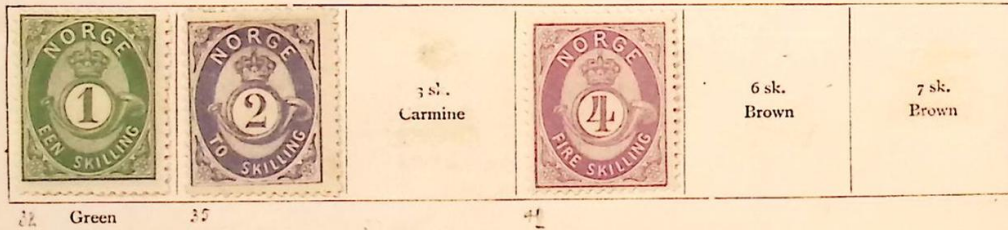
1863. Perf.



1867. Perf.



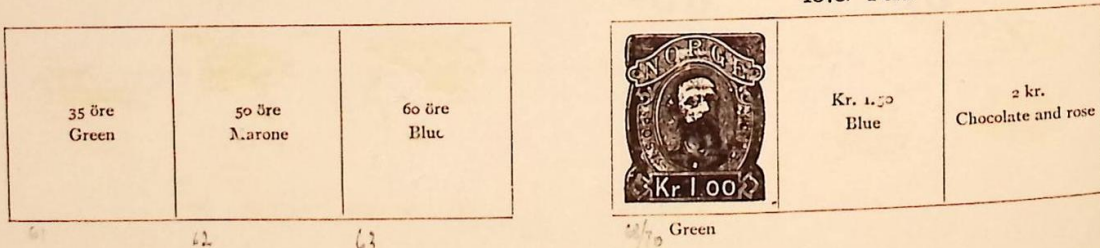
Wmk. "Posthorn." Perf.
1872.



1877. Currency changed. Posthorn in design shaded. "NORGE" in Egyptian capitals



1878. Perf.



1883. As 1877, but Posthorn not shaded



NORWAY—continued

1883—continued

12 öre Brown	20 öre Brown	25 öre Blue	25 öre Mauve
-----------------	-----------------	----------------	-----------------

1888. As last. Surcharged

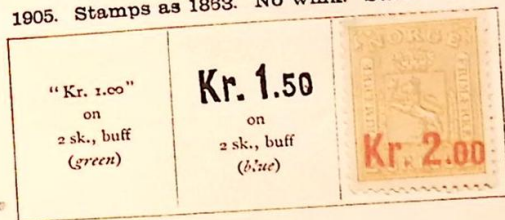


1894. As 1883, but "NORGE" in Roman capitals

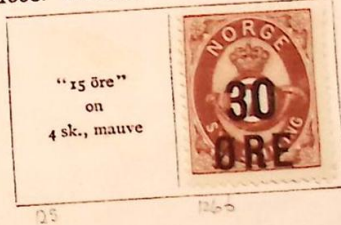


25 öre Mauve	25 öre Magenta	30 öre Green	50 öre	60 öre
-----------------	-------------------	-----------------	--------	--------

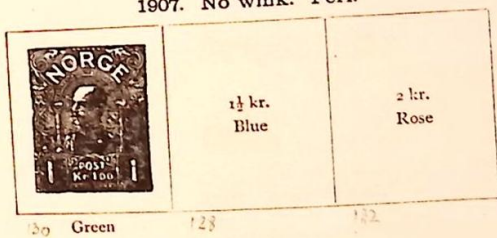
1905. Stamps as 1883. No wmk. Surcharged



1906. Stamps of 1872 surcharged



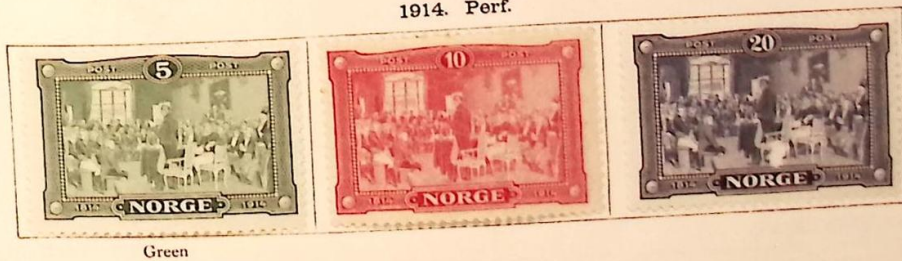
1907. No wmk. Perf.



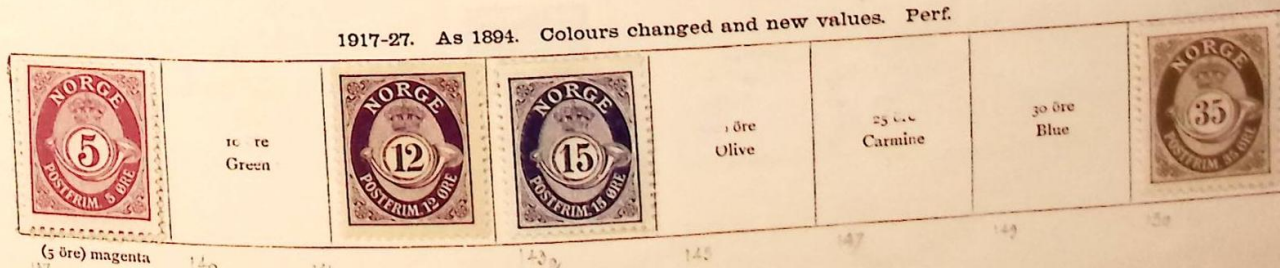
1911-16. Perf.



1914. Perf.



1917-27. As 1894. Colours changed and new values. Perf.



NORWAY—continued

1917-27—continued



As 1911-16



As 1894. Surcharged



1922-24. Perf.



1925. Perf.



Scarlet

1925. Perf.

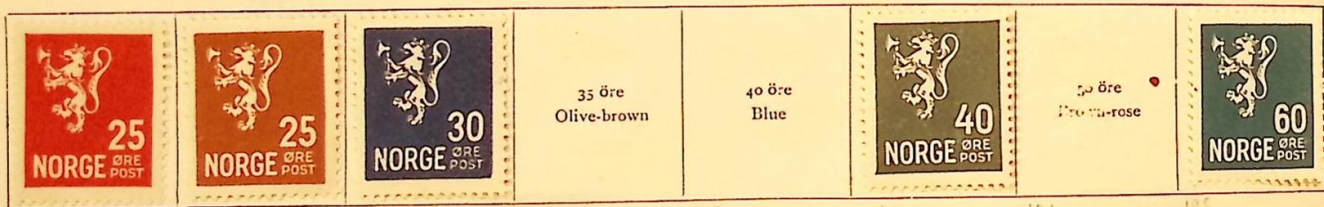


Green

1926-28. Perf.



Green



Olive-brown

Blue

Blue-rose

1927-28. Surcharged stamp of 1922-24



On 45 øre, blue

Stamp of 1925



Air stamp. Perf.



Blue

1929. As 1917-27



1928. Perf.



Green


1929. Perf.



Green

NORWAY—continued

1929. Postare Due stamps overprinted

	Post Frimerke 4 Øre Marone	10 Øre Green	100 Øre Yellow	POST 25 Øre Brown	20 Øre Purple	40 Øre Blue	50 Øre Claret	200 Øre Violet
---	---	-----------------	-------------------	--------------------------------	------------------	----------------	------------------	-------------------

Drab

Stamp of 1867
Surcharged



As 1926-28
New value



1930. Perf.

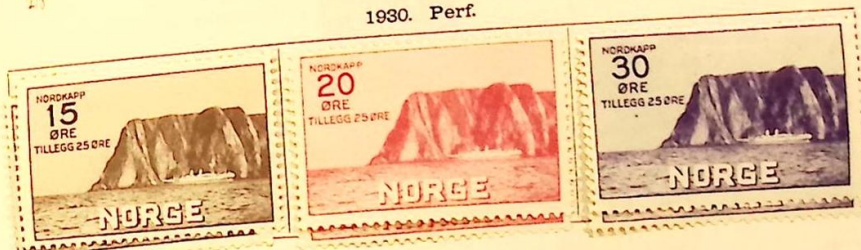


Green

Sepia

Blue

1930. Perf.



Brown

1931. Perf.



Carmine

1932. Perf.



Green

1931. As 1926-28.
New colour



1934. Perf.



Green

1935. Perf.



Green



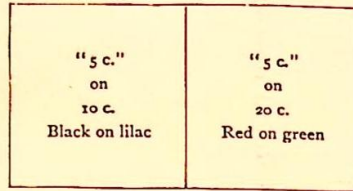
NOSSI-BÉ

*An Island NW of Madagascar
French Protectorate 1840
1901 became part of Madagascar Dependencies*

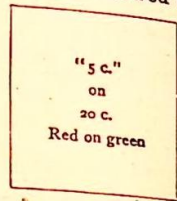
1889-93. French Colonial stamps surcharged in black, red, or blue
"Peace and Commerce" type Imperf. "Commerce" type. Perf.



Red on yellow Red on yellow

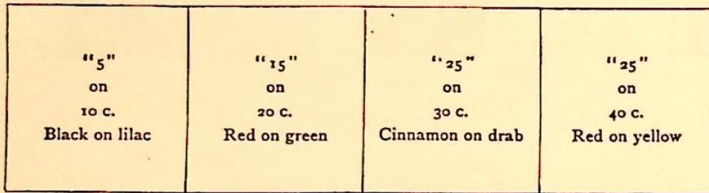


"5 c." on 10 c. Black on lilac "5 c." on 20 c. Red on green



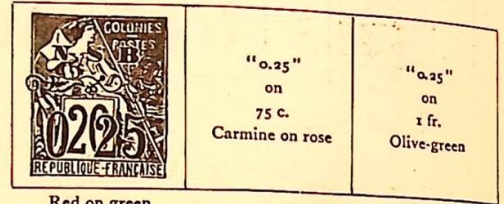
"5 c." on 20 c. Red on green

Large figures



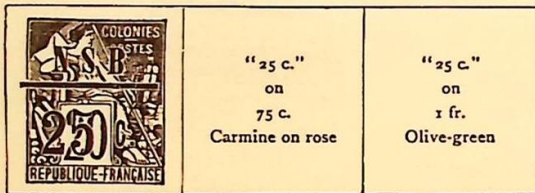
"5" on 10 c. Black on lilac "15" on 20 c. Red on green
"25" on 30 c. Cinnamon on drab "25" on 40 c. Red on yellow

"Commerce" type. Perf.



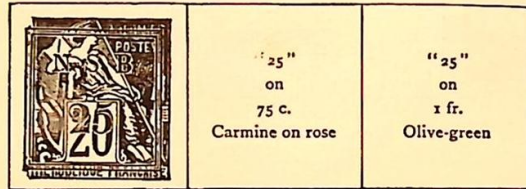
Red on green

"0.25" on 75 c. Carmine on rose "0.25" on 1 fr. Olive-green



Red on green

"25 c." on 75 c. Carmine on rose "25 c." on 1 fr. Olive-green

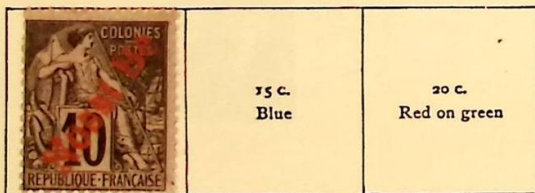


Red on green

"25" on 75 c. Carmine on rose "25" on 1 fr. Olive-green



On 20 c., red on green



On 10 c., black on lilac

35 c. Blue 20 c. Red on green



Red on green

1894. Perf. Name in red or blue



Black on azure



2623

233

Stamps of Mozambique overprinted NYASSA Perf.
1897



Brown

Orange



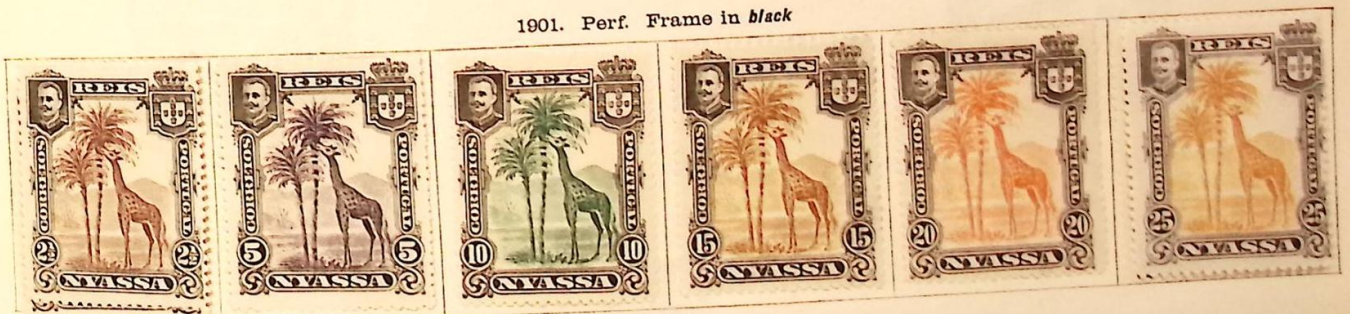
1898



Orange



1901. Perf. Frame in black



Chocolate



Bistre

1901—continued



1903. As last, surcharged
Large surcharge



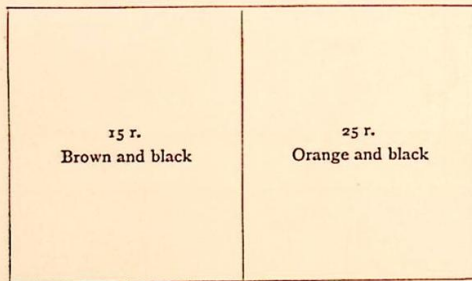
Small surcharge



Overprinted PROVISORIO (large)



Overprinted PROVISORIO (small)



1910. Issue of 1901 surcharged, in black



1911. REPUBLIC, Oct., 1910. Frame in first colour. Overprinted REPUBLICA in red. Perf.



Black and violet

Black and carmine



Black and brown

NYASSA—continued

1911—continued



Black and brown

1919. As 1901. Frames in black. Surcharged

<p>"½ c." on 2½ r., chocolate</p>	<p>"½ c." on 5 r., violet</p>	<p>"1 c." on 10 r., green</p>	<p>"1½ c." on 15 r., brown</p>	<p>"2 c." on 20 r., vermilion</p>
---	---------------------------------------	---------------------------------------	--	---



	<p>"15 c." on 150 r., chestnut</p>		<p>"30 c." on 300 r., green</p>
--	--	--	---

On provisionals of 1903

<p>"40 c." on "65 r." on 80 r., mauve and black</p>	<p>"50 c." on "115 r." on 150 r., chestnut and black</p>	
---	--	--

<p>"1½ c." on 15 r., brown and black (Provisorio)</p>	
---	--

NYASSA—continued

1921. As 1911. Surcharged as ³ in black or red
Centavos



1921. Perf.



Claret

Black and red



Sepia and black

London Suburges
1921



33/55 5.



2132 2^o
(1924)



NYASSA—continued

1921—continued



1921/23
perf 14 or 15.

96/113



NYASSA—continued

1921—continued



Brown and black



Black and brown

1925. "Pombal" Commemoratives of Mozambique overprinted "NYASSA"

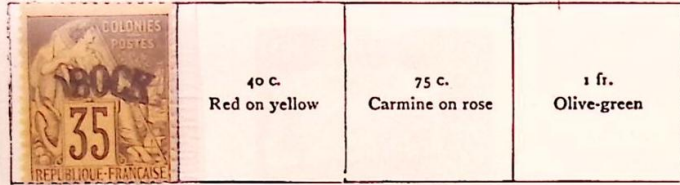


152/50
1924

Feb., 1892. French Colonial stamps, "Commerce" type, overprinted or surcharged. Perf. Curved overprint



Black on azure



Straight overprint



Green



Surcharged in addition in red



In black or blue



In blue



Olive-green

1892. Perf. Name in red or blue

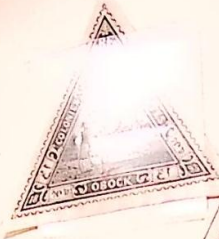


Black on azure



1893. Imperf.

1893-94. Imperf.



Slate-green



Rose



Black and rose

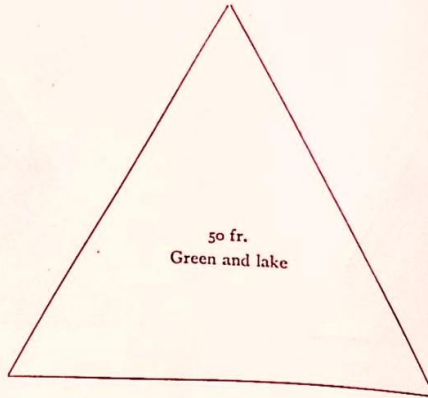
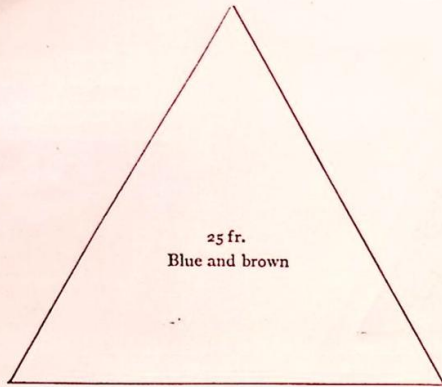


Rose and blue



OBOCK—continued

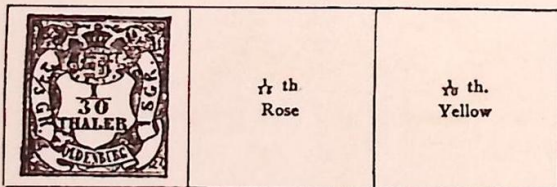
1893-94—continued



OLDENBURG

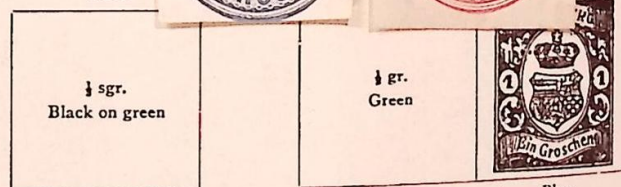


1852. Black impression



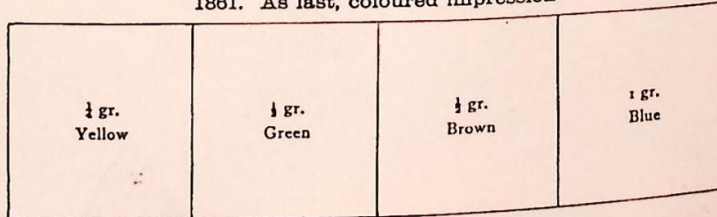
Blue

1855

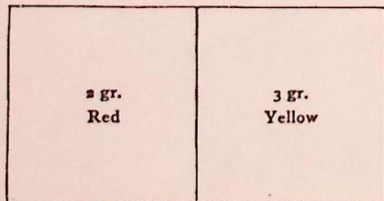


Blue

1861. As last, coloured impression



1862. Rouletted

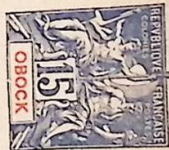
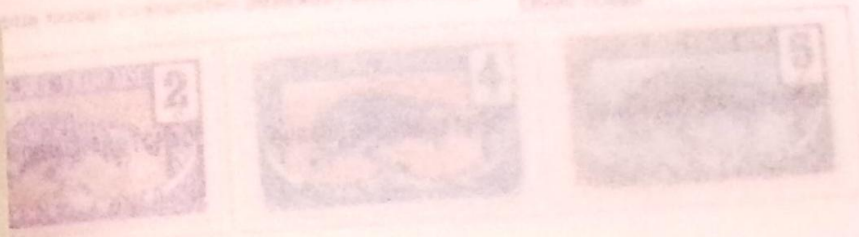


Orange

Reprints

OUBANGUI-CHARI TCHAD

1915. Stamps of the Republic of Oubangui-Chari-Tchad. 1915. Stamps of the Republic of Oubangui-Chari-Tchad.



1915. Stamps of the Republic of Oubangui-Chari-Tchad.

OUBANGUI-CHARI-TCHAD

Central African Republic

1915. Stamps of Middle Congo overprinted OUBANGUI-CHARI-TCHAD or OUBANGUI-CHARI-TCHAD



Olive and brown



Blue and green



Green and violet

1916. Surcharged



1922. As 1915



13. The surcharge not listed

OUBANGUI-CHARI

1922. As Middle Congo, 1907, overprinted OUBANGUI-CHARI or CHARI in black or red



Surcharged



1924-28. Stamps as above further overprinted AFRIQUE EQUATORIALE or AFRIQUE EQUATORIALE FRANCAISE in black, blue or red



OUBANGUI-CHARI—continued

1924-28—continued



1925-27. As last. Surcharged in black or red



OUBANGUI-CHARI—continued

1925-27—continued

1930-33. As 1924-28. New values



1931. Colonial Exhibition stamps. As Camerouns but overprinted "OUBANGUI-CHARI"



From 6th March 1936 Stamps of French Equatorial Africa were used.

PACKHOI

1903. Stamps of Indo-China overprinted **PACKHOI** Chinese characters



1. Black on azure



13 Jan 36 not listed

PACKHOI--continued

PAK-HOI

1906. Overprinted

Chinese characters various

花銀八厘

Perf.

OUBANGUI-CHARI 17.8.1930 postage due



D 22/102

Violet

With PAKHOI and Chinese characters (various) above



Orange (in blue)

Lake (in blue)

Green

Blue

Violet

PACKHOI—continued

PAK-HOI

1906. Overprinted

Chinese characters various

花銀八厘

Perf.

Stamps as 1903



Claret on yellow



1908. Centre and value in black. Perf. Overprinted in red or blue
With PAKHOI and Chinese characters (various) below



Green



Violet

With PAKHOI and Chinese characters (various) above



Orange (in blue)

Lake (in blue)

Green

Blue

Violet

PACKHOI—continued

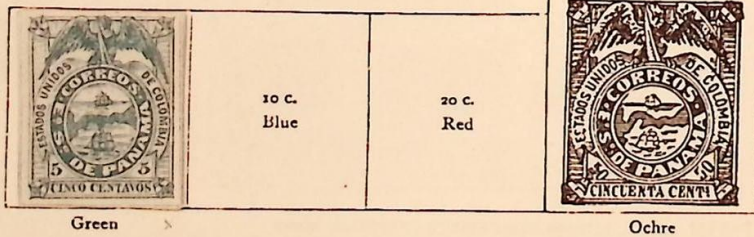
1918. Stamps of 1908. Surcharged in black or blue



PANAMA

I. ISSUES UNDER COLOMBIAN GOVERNMENT

1878. Perf.



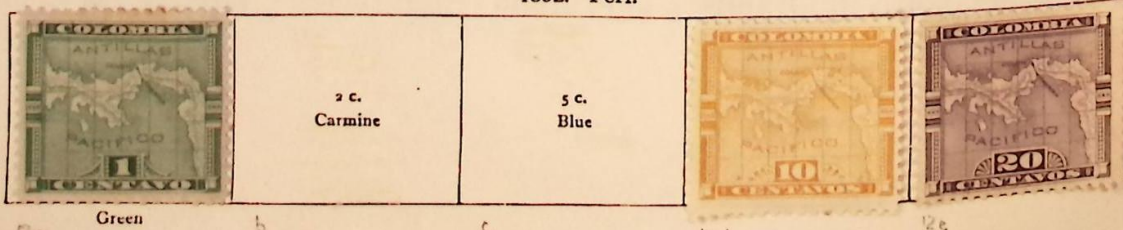
1887. Perf.
Black on coloured paper



Colour on white



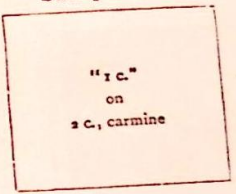
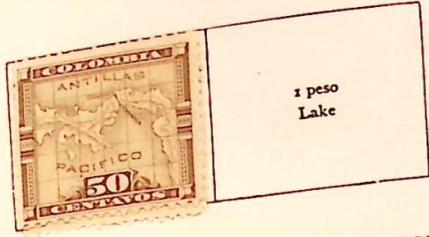
1892. Perf.



PANAMA—continued

1894. Surcharged in black, red, or green
Stamps of 1887

Stamp of 1892

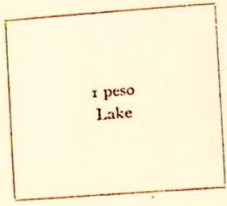


II. ISSUES OF THE INDEPENDENT REPUBLIC 1903-4 Provisionals. Stamps of 1892 overprinted

"First Panama." With **REPUBLICA DE PANAMA** in red or blue-black

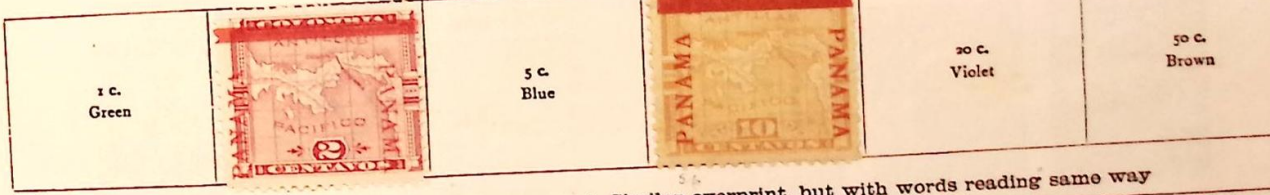


"Second Panama." Obliterating bar in colour of stamp, names in black or red

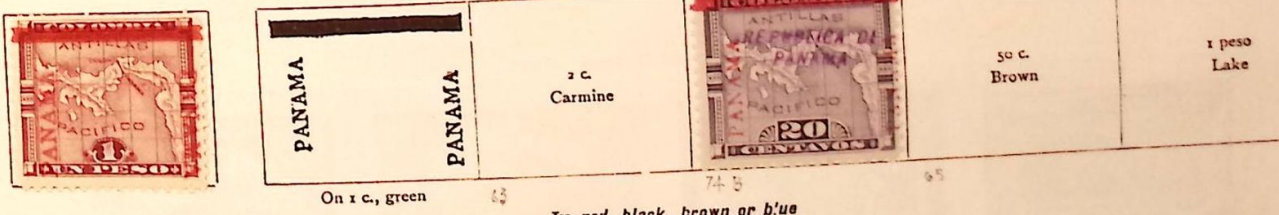


On 2 c., carmine (names in black)

"Third Panama." Similar to last, but whole overprint in red



"Fourth Panama." Similar overprint, but with words reading same way



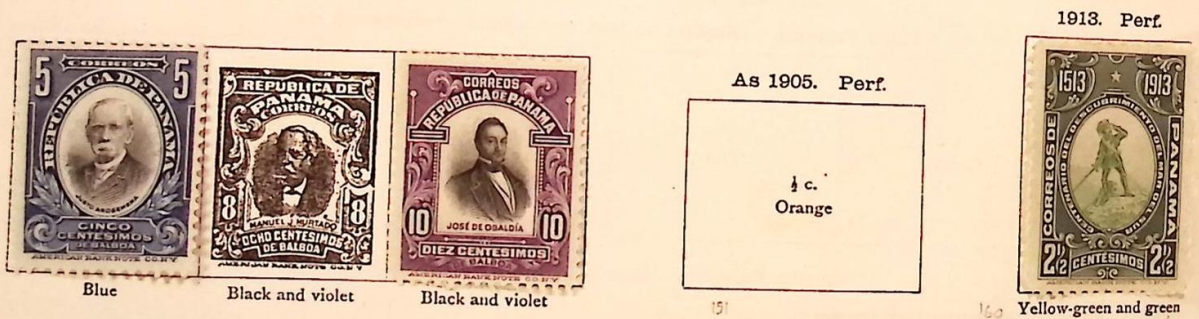
In red, black, brown or blue
Stamps of 1892



Stamp of 1887



PANAMA—continued



PANAMA—continued

1915—continued



Blue

Brown

Brown

Orange

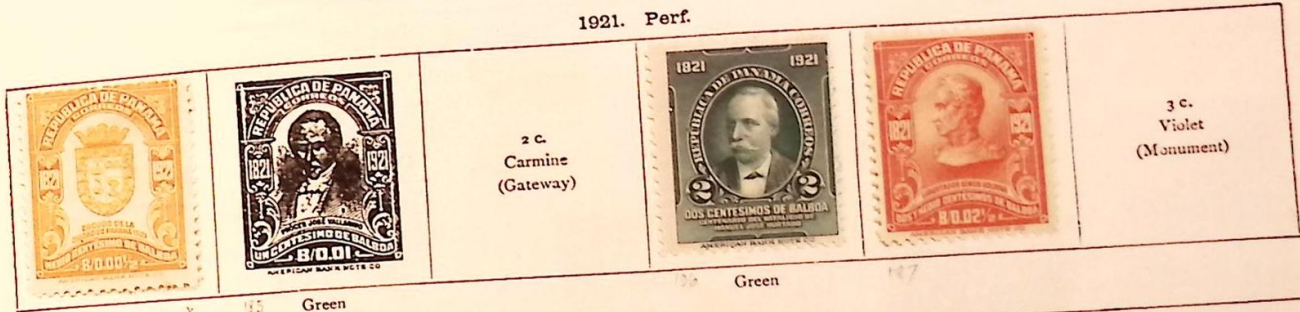
Surcharged in blue



Indigo-violet



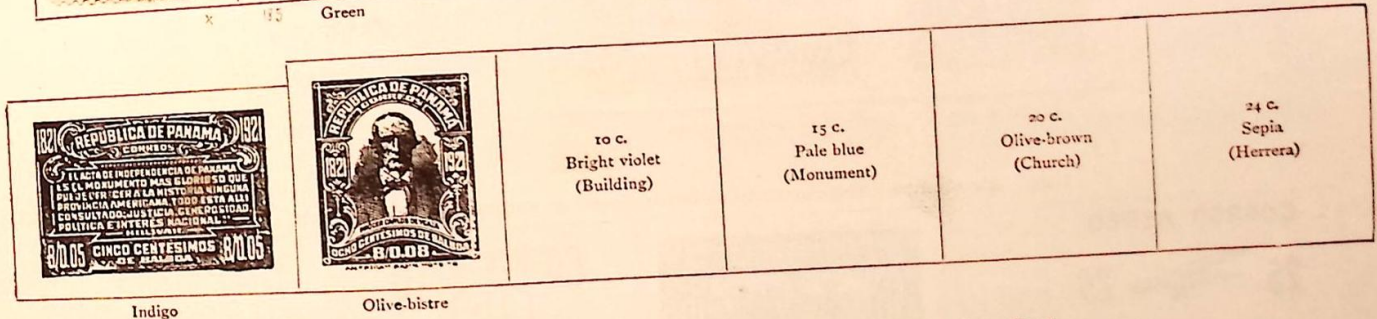
1921. Perf.



2 c.
Carmine
(Gateway)

Green

3 c.
Violet
(Monument)



10 c.
Bright violet
(Building)

15 c.
Pale blue
(Monument)

20 c.
Olive-brown
(Church)

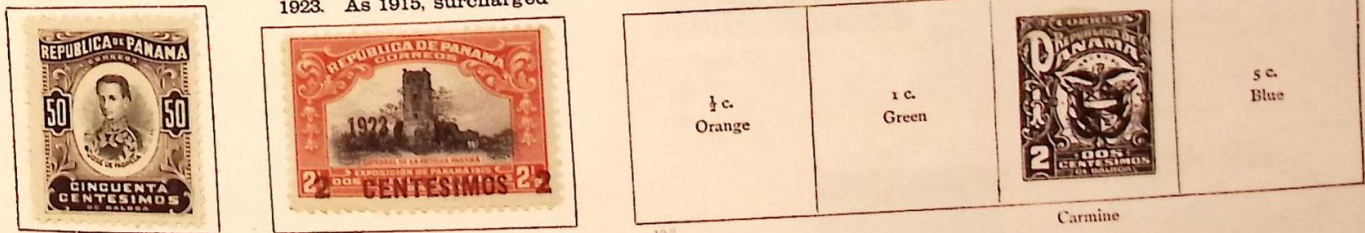
24 c.
Sepia
(Herrera)

Indigo

Olive-bistre

1923. As 1915, surcharged

1924. Perf.



1/2 c.
Orange

1 c.
Green

5 c.
Blue

Carmine



10 c.
Violet

12 c.
Olive

15 c.
Ultramarine

50 c.
Orange

PANAMA—continued

1926. Perf.



1928. Rouletted



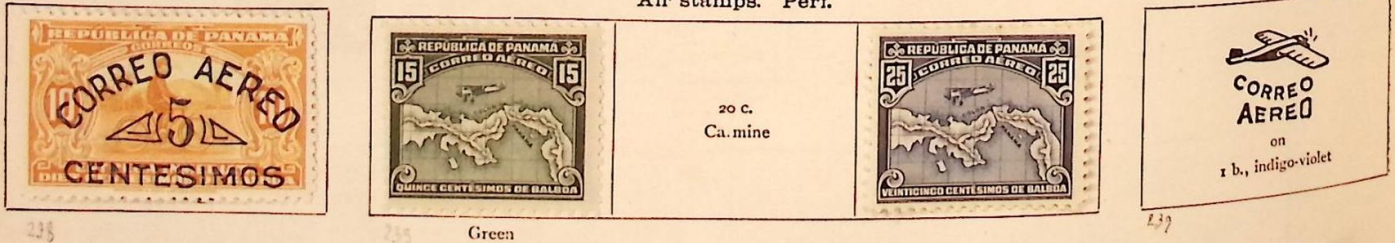
1929. Air stamps. Express stamps overprinted or surcharged in blue. Perf.



As last. New value

1930 Air stamps. Perf.

As 1915. Overprinted in red



Air stamps. Perf.



1932-36. Various stamps overprinted

As 1921

As 1926

1931. Air stamp. Perf.



Blue

Surcharged



HABILITADA

1/2 c.
Orange

10 c.
Violet

1/2 c.
Orange

1 c.
Green

Surcharged in addition

Air stamp of 1930.
Surcharged

2 c.
Carmine

5 c.
Blue

20 c.
Brown

"10 c."
on
12 c., olive

"10 c."
on
15 c., pale blue

HABILITADA

20 c.

on
25 c., blue

1934. Various designs inscribed "INSTITUTO NACIONAL 1909-1934." Perf.

1932 Perf.



Carmine



Green



Air stamps. Express stamps overprinted "CORREO AEREO" or surcharged in addition as in 1929



Chocolate



1931



1926



1922



1913



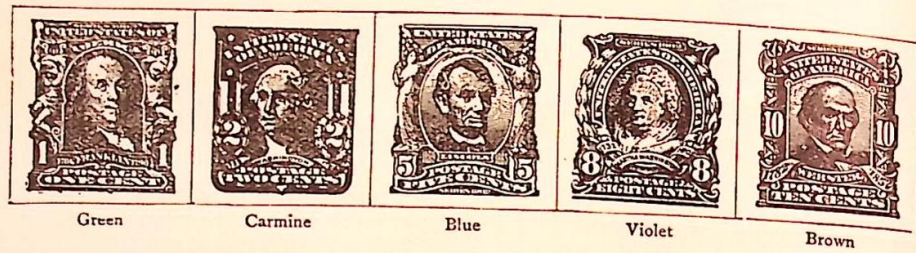
1904

PANAMA (Canal Zone)

A. Stamps of United States overprinted

CANAL ZONE
PANAMA

1904



Green Carmine Blue Violet Brown

B Stamps of Panama, 1892 (Colombian Government), overprinted

1906



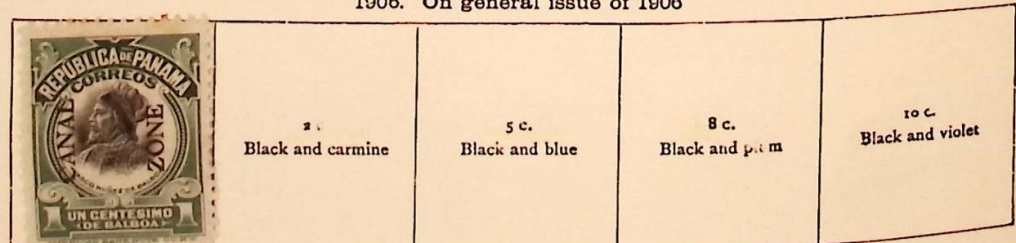
21 On 20 c., violet 22 On 1 peso, lake

C. Stamps issued by Independent Republic overprinted in grey-blue or black

<p>1904. With CANALZONE</p> <p>"Fourth Panama"</p> <div style="border: 1px solid black; padding: 10px; text-align: center;"> <p>2 c. Carmine</p> </div>	<p>1904-6. With CANAL ZONE</p> <p>"Third Panama"</p> <table border="1" style="width: 100%; text-align: center;"> <tr> <td style="width: 50%; padding: 10px;"> <p>5 c. Blue</p> </td> <td style="width: 50%; padding: 10px;"> <p>10 c. Orange</p> </td> </tr> </table>	<p>5 c. Blue</p>	<p>10 c. Orange</p>	<p>1904-6. With CANAL ZONE</p> <p>"Third Panama"</p> <table border="1" style="width: 100%; text-align: center;"> <tr> <td style="width: 50%; padding: 10px;"> <p>2 c. Carmine</p> </td> <td style="width: 50%; padding: 10px;"> <p>5 c. Blue</p> </td> </tr> </table>	<p>2 c. Carmine</p>	<p>5 c. Blue</p>
<p>5 c. Blue</p>	<p>10 c. Orange</p>					
<p>2 c. Carmine</p>	<p>5 c. Blue</p>					
<p>"Third Panama"—continued</p> <div style="display: flex; align-items: center;"> <div style="margin-left: 20px; border: 1px solid black; padding: 10px; text-align: center;"> <p>10 c. Orange</p> </div> </div>	<p>"Fourth Panama"</p> <div style="border: 1px solid black; padding: 10px; text-align: center;"> <p>8 cts (in red) on 50 c., brown</p> </div>	<p>General issue of 1905</p> <table border="1" style="width: 100%; text-align: center;"> <tr> <td style="width: 70%; padding: 10px;"> <p>1 c. Green</p> </td> <td style="width: 30%; padding: 10px;"> </td> </tr> </table>	<p>1 c. Green</p>			
<p>1 c. Green</p>						

With **CANAL ZONE** (large overprint)

1906. On general issue of 1906



26 27 28 29

PANAMA (Canal Zone)—continued

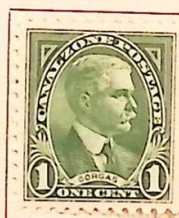
1924-27. Stamps of United States, 1922, overprinted in red or black



1927. Stamp of U.S.A. overprinted



Carmine



Green



Carmine



Blue

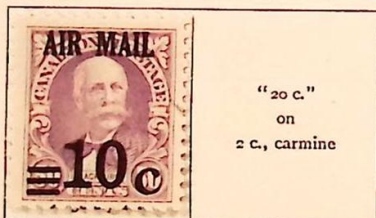
1928-29. Perf.

1929. Air stamps. As last, surcharged in black or red



Plum

Lilac



"20 c."
on
2 c., carmine

x. 125



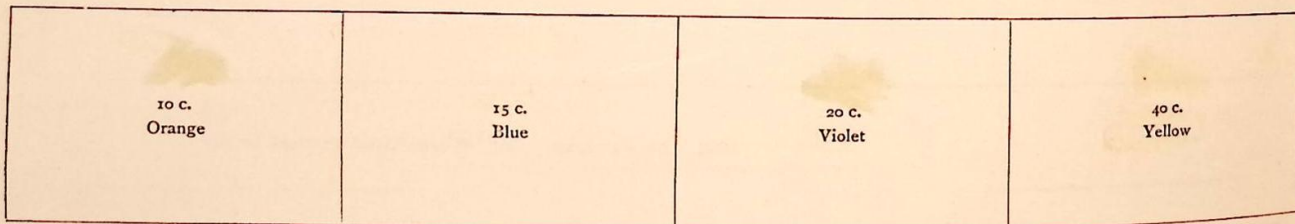
117

119



1931. Air stamps. Perf.

Green

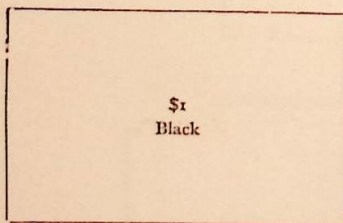


119

CANAL

1933. Overprinted

ZONE



\$1
Black



Orange

Grey



Sepia



149

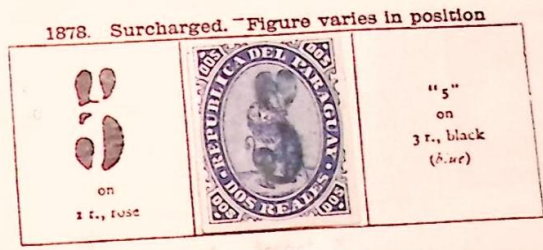
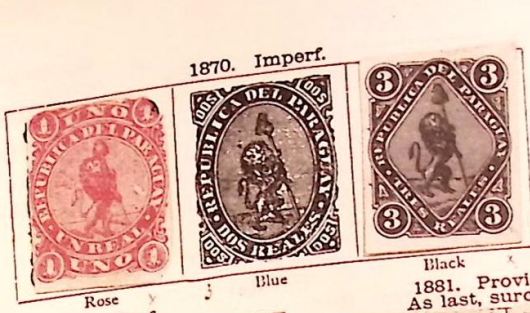
Lilac



1934. Perf.

Violet





1884. Provisional stamp of 1870
surcharged as 1881



1895-99. Stamps of 1889-93 surcharged



1896. As 1892. "CENTAVO"
instead of "CENTAVOS"



PARAGUAY—continued

1900. Engraved. Perf.



Grey



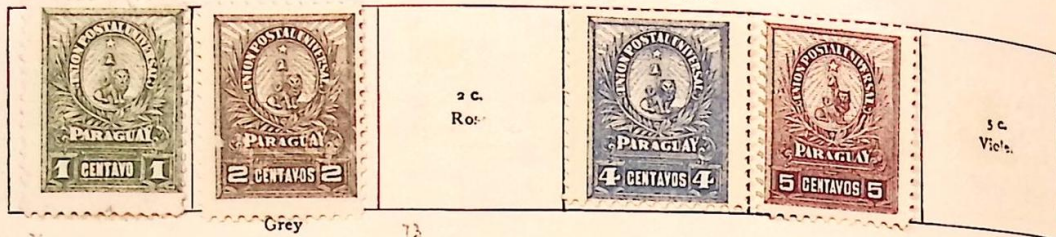
Surcharged in red

1901. Perf.



Slate

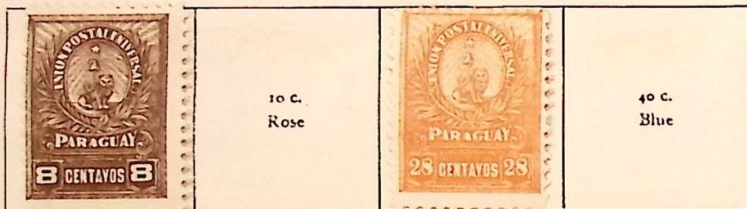
1901-2. Lithographed. Perf.



2 c.
Rose

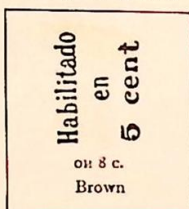
5 c.
Violet

1902. Provisionals. Various stamps surcharged Stamp of 1901-2



10 c.
Rose

40 c.
Blue



Habilitado
en
6 cent
on: 8 c.
Brown



Surcharged as last

Stamps of 1889-93

Stamp of 1892

Stamp of 1901-2

1903. Perf.



59



87

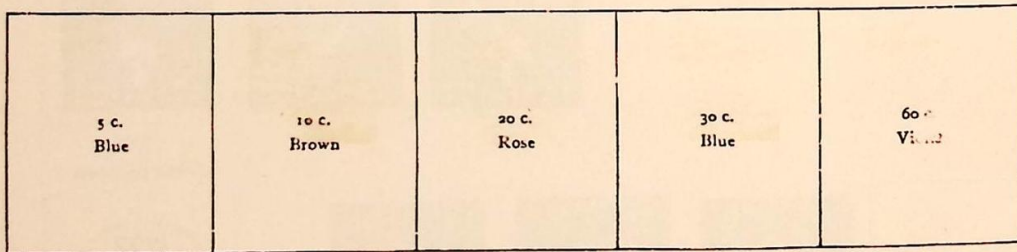


87



Grey

1903-5. Perf



5 c.
Blue

10 c.
Brown

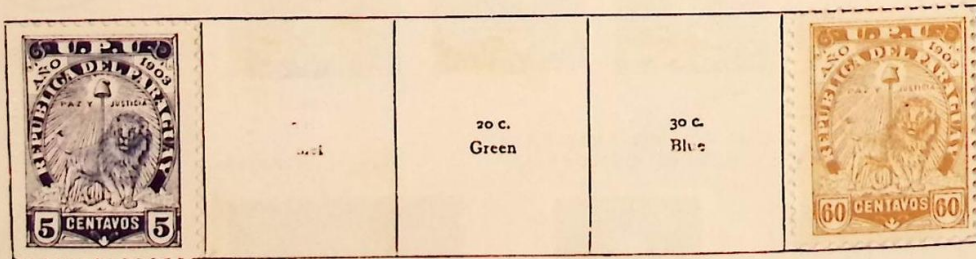
20 c.
Rose

30 c.
Blue

60 c.
Violet



Green



20 c.
Green




30 c.
Blue



Blue

PARAGUAY—continued


1904-6. Perf.

	100 c. Orange		2 c. Vermilion	2 c. Olive		5 c. Vermilion
---	------------------	---	-------------------	---------------	---	-------------------

5 c. Grey-blue	5 c. Orange-yellow	10 c. Ochre		10 c. Blue	20 c. Deep lilac	
-------------------	-----------------------	----------------	--	---------------	---------------------	---

20 c. Green	30 c. Greenish blue		30 c. Dull lilac		60 c. Chestnut	60 c. Pink
----------------	------------------------	--	---------------------	--	-------------------	---------------

Centre in black

	1 p. Orange	1 p. Olive-green	2 p. Blue	2 p. Carmine
---	----------------	---------------------	--------------	-----------------

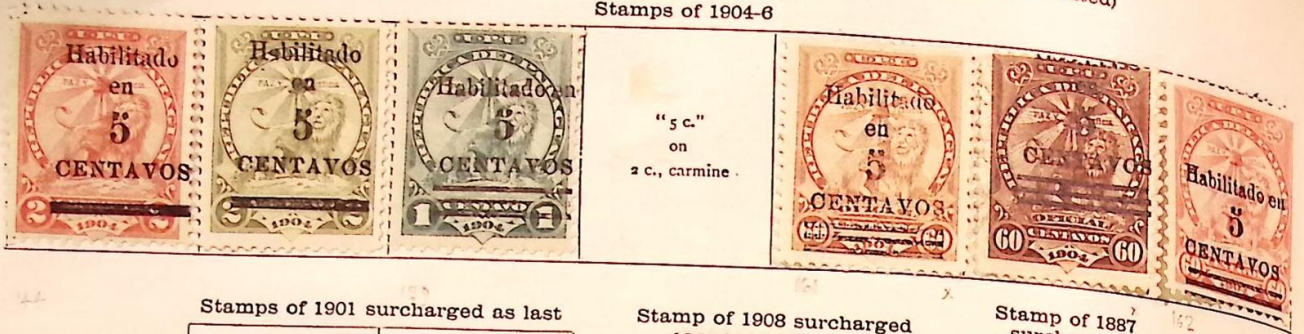
Carmine

2 p. Orange	5 p. Red	5 p. Blue	5 p. Olive-green	10 p. Orange
----------------	-------------	--------------	---------------------	-----------------

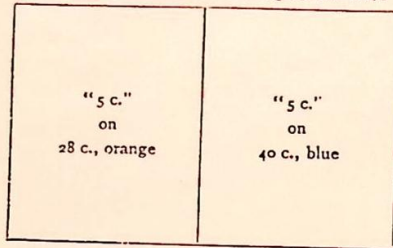
10 p. Blue	10 p. Chocolate	20 p. Olive-green	20 p. Yellow	20 p. Violet
---------------	--------------------	----------------------	-----------------	-----------------

PARAGUAY—continued

1907-9. Provisionals. Overprinted or surcharged in *black* (unless otherwise stated)
 I. On ordinary issues
 Stamps of 1904-6



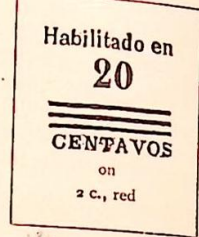
Stamps of 1901 surcharged as last



Stamp of 1908 surcharged



Stamp of 1887 surcharged



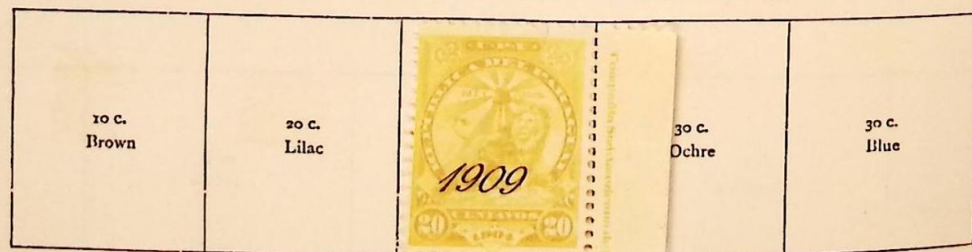
Stamps of 1908-8 similarly surcharged



Stamps of 1904-6 overprinted **1908** in black



As last, overprinted **1909** in black



PARAGUAY—continued

1907-9. Provisionals—continued

II. On Official stamps

Stamps inscribed "OFICIAL" overprinted or surcharged as illustrated



Overprinted as last, but wider space between word and line



Black and orange

Stamps as last, surcharged



Stamps of 1904 surcharged



Stamps inscribed "OFICIAL" (illustrated above), surcharged

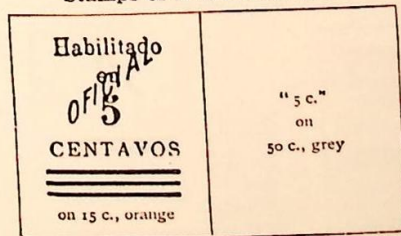


Stamps of 1889-93 overprinted "OFICIAL" and surcharged as stamp of 1887



"5 c." on 15 c., orange	"5 c." on 20 c., pink	"5 c." on 30 c., blue (1903 issue)	"5 c." on 50 c., grey
-------------------------------	-----------------------------	---	-----------------------------

Stamps of 1887 surcharged

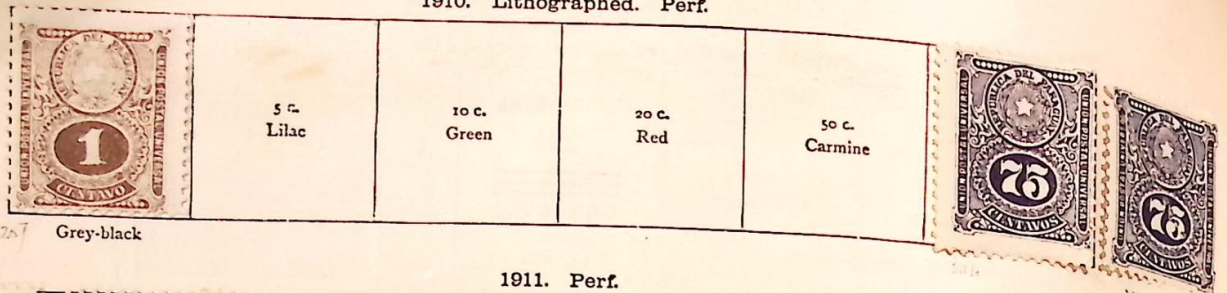


Stamps of 1903 surcharged



PARAGUAY—continued

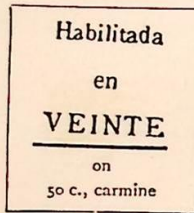
1910. Lithographed. Perf.



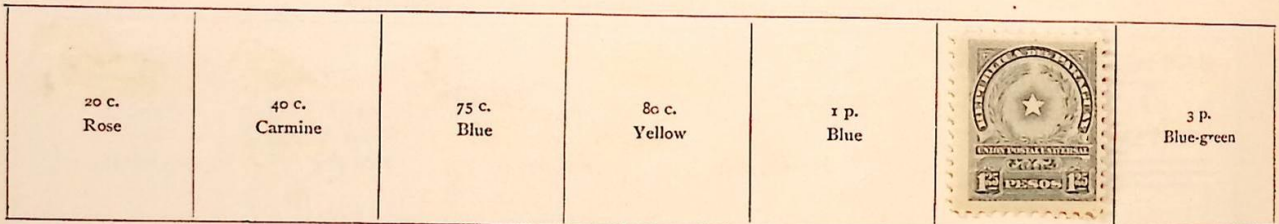
1911. Perf.



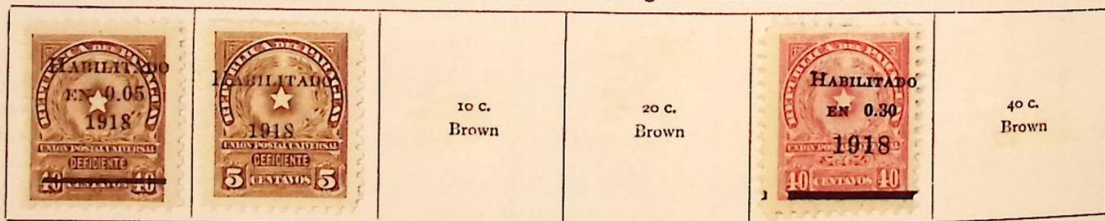
1912. Stamp of 1910 surcharged in black



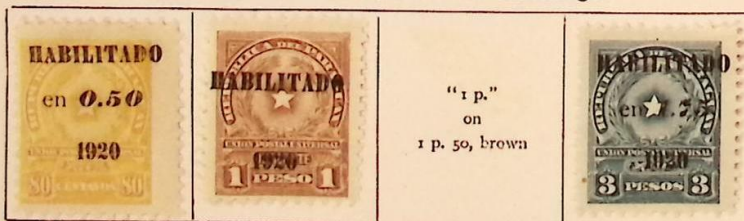
1913. Perf.



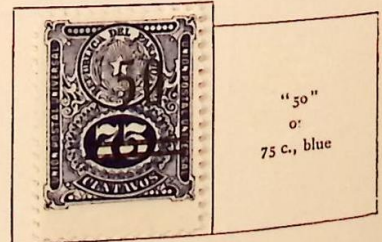
1918. Stamps of 1913 overprinted or surcharged "HABILITADO" and date



1920. As 1913. Overprinted or surcharged



As 1910 and 1913. Surcharged



PARAGUAY—continued

1920—continued

As 1910. Colours changed

As 1913. Surcharged

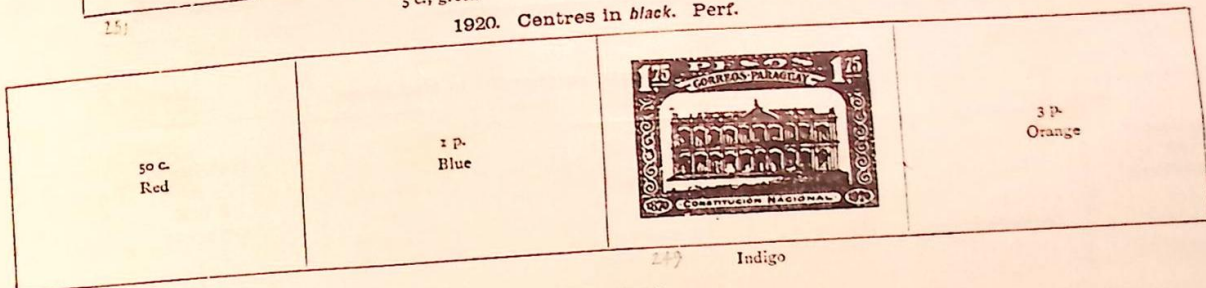


255



5 c., green

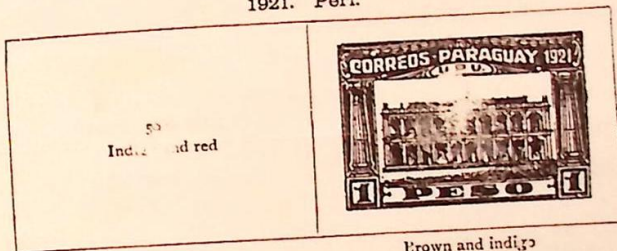
1920. Centres in black. Perf.



249

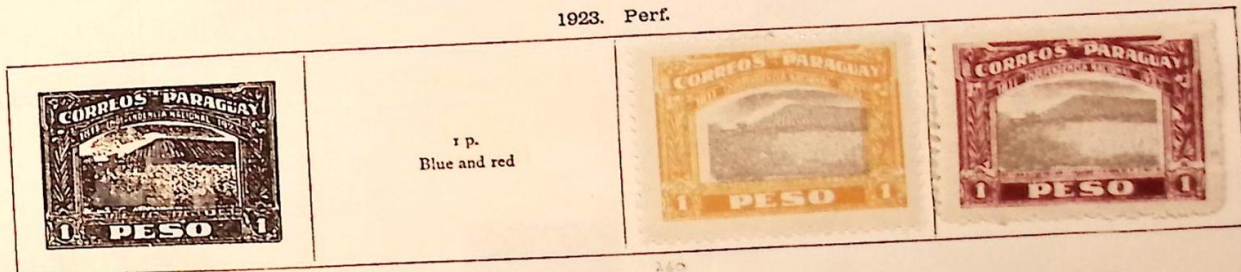
Indigo

1921. Perf.



Brown and indigo

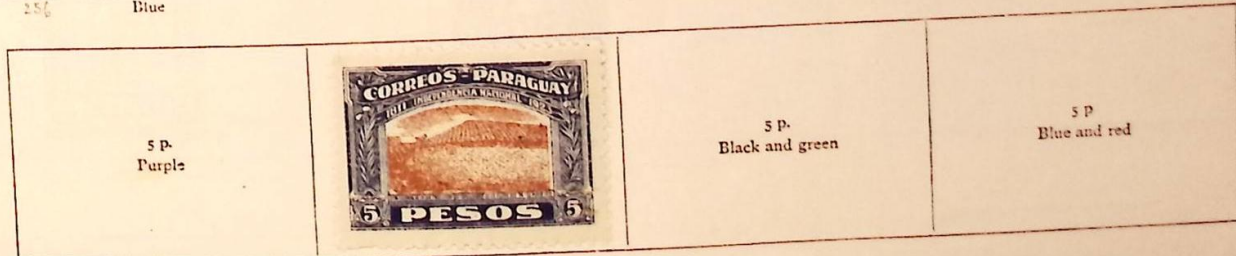
1923. Perf.



256

Blue

260



261

1924. As 1913. Surcharged in black or red



266

On 1 p. 25, greenish blue

267

On 1 p. 25, greenish blue

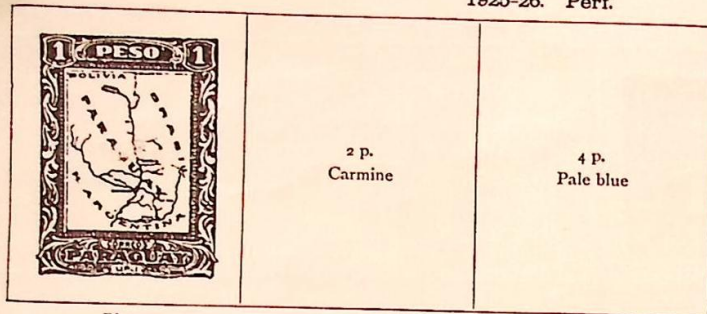
1924. Perf.



Blue

PARAGUAY—continued

1925-26. Perf.



Blue

2 p.
Carmine

4 p.
Pale blue



Pale blue

1926-27. Various stamps surcharged in black or red



\$0.50
on
75 c., blue
(Official stamp)



1927-30. Perf.



20 c.
Greenish blue

Pale blue



50 c.
Orange

1 p.
Scarlet

Green

Brown



1 p. 50
Lilac

Bistre

Drab

Chocolate

Marone

1928

As "Map" type of 1927-30

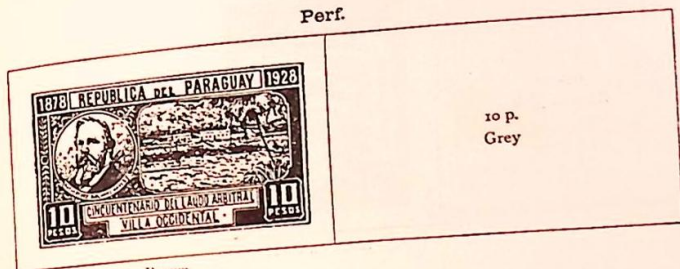
Perf.



Scarlet



Perf.



Brown

10 p.
Grey

1929. Air stamps. Perf.



Green

Brown

Air stamps. Official stamps surcharged



1929. Air stamps. Stamps of 1925-26 and 1927-30 surcharged in black or red
Surcharged as last



1930. Air stamps. Stamps of 1927-30 overprinted in red



PARAGUAY—continued

As last, and stamps of 1928. Surcharged in red or black



1930. Air stamps. Perf.



Blue on blue

Violet on blue

Black on blue

Air stamps. Perf.



Green

1930. Perf.

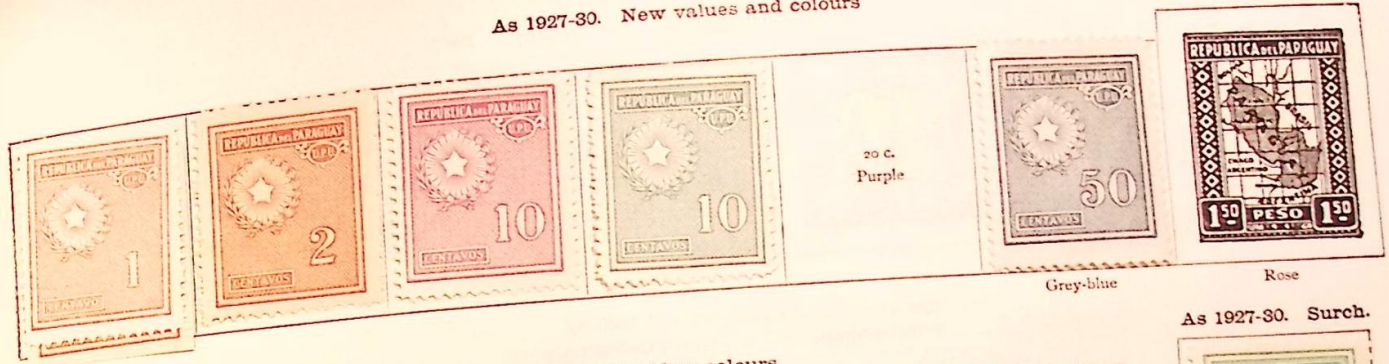


Greenish blue

Charity stamps. Perf.



As 1927-30. New values and colours



Grey-blue

Rose

As 1927-30. Surch.

1930. Air stamps as 1929. New colours



Blue green

Red

Deep blue

1931. Perf.

Air stamps. As 1927-30. Surch.



Blue on rose

Violet

1931. Air stamps. Perf.



Claret

1931. Perf.

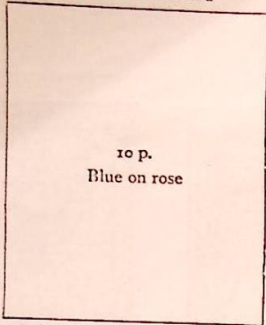


6 p.
Deep green

10 p.
Carmine on
blue

Chocolate

PARAGUAY—continued



Air stamps. Perf.



Pale blue

Violet

Red

Green

Air stamps. As Map type of 1925-26 Surcharged Overprinted only



Blue



Green

As 1930. Overprinted



1932. Air stamps. Perf.



Red



PARAGUAY—continued

1932—continued



Red



Lilac

1933. Air stamps as 1932 Surcharged



1935. Colour changed



Rose

1934-36. New colours. Perf.



Mauve



Orange



Grey

PARAGUAY—continued

1933-36. Air stamps. New designs and colours. Perf.



Green

Lake



Greenish blue

Slate-blue



Blue-green

Blue



402



10 p.
Turquoise



Brown

PARAGUAY—continued

1933-36—continued



Ultramarine

Red

1933. Perf.



102 p.
Blue

Olive and red-brown

1 p.
Brown and blue-green



1 p. 50
Emerald and blue

Zeppelin air stamps. Perf.



Red

Brown

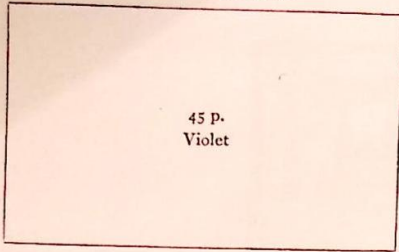
1934. As last. Overprinted



469 73

PARAGUAY—continued

1934—continued



1935. Zeppelin air stamps. Colours changed and overprinted



*C. Significat Comptina
sold in country districts
by postal agents.*



324 n (1936)



341 (1931)



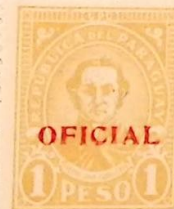
0237



Boque



1936 Official (reprints)

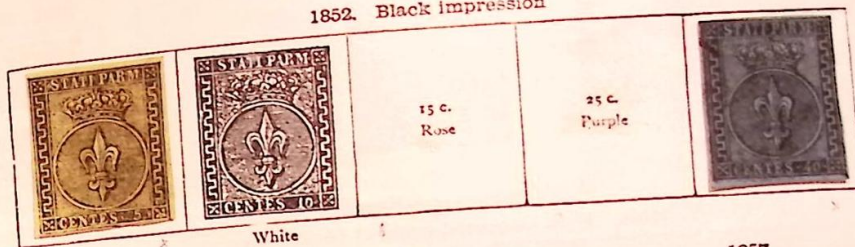


0476/7

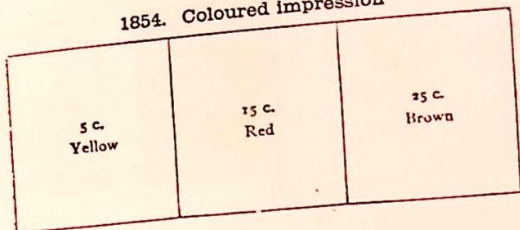


PARMA

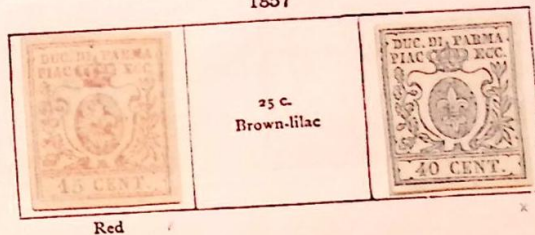
1852. Black impression



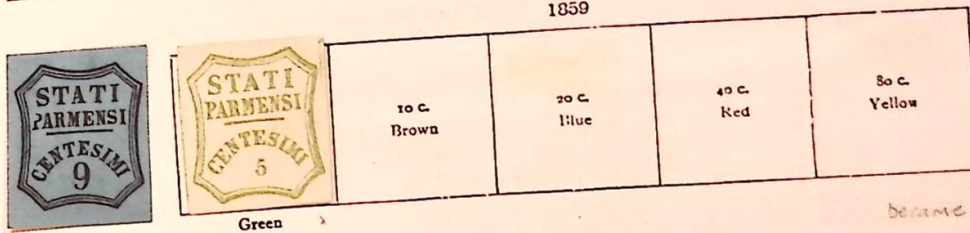
1854. Coloured impression



1857



1859



Became Kingdom of Sardinia on 18th March

PERU

1857. Provisional issue

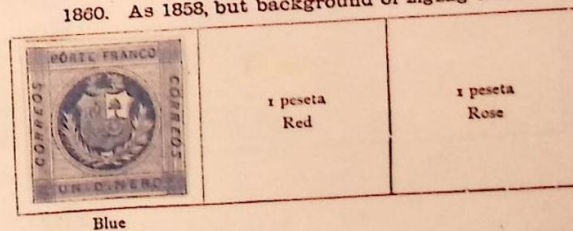
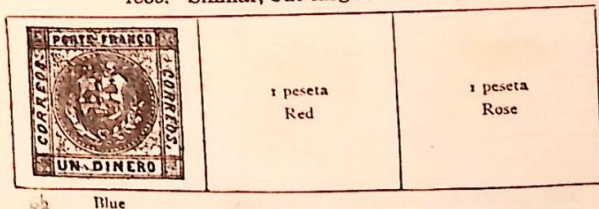


Shipping wrong way. Make Peru navigation to.

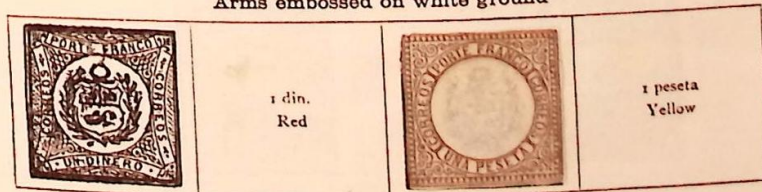
1858. Background of wavy lines



1860. As 1858, but background of zigzag lines

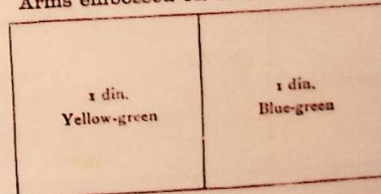


Arms embossed on white ground



1862-73

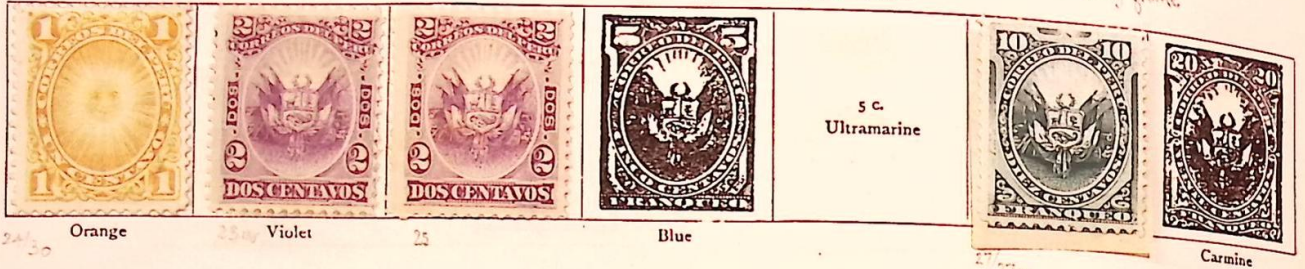
Arms embossed on coloured ground



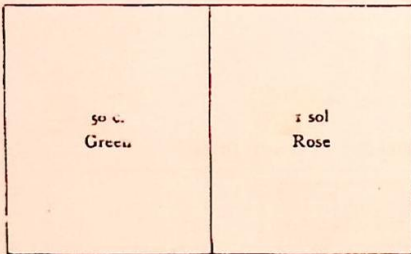
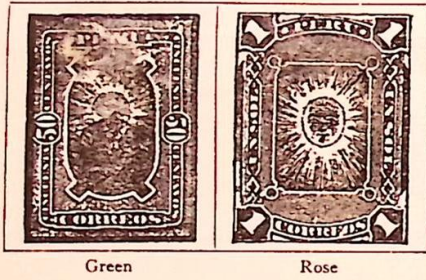
PERU—continued



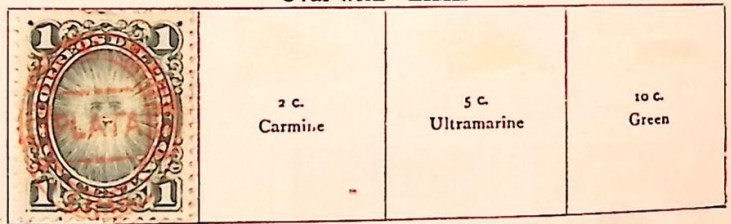
1874. With embossed grille at back. Perf.



1880. Stamps as last, overprinted in red, blue, or black Oval with "PERU"



Oval with "LIMA"



1882. Stamps as 1874 overprinted with Chilean Arms in blue, black, or red



As last, with additional overprint Horseshoe in red, blue, or black





PERU--continued

1883

Stamps as 1874, overprinted with a Triangle (four types) in black or red. Triangle only

With Horseshoe only

	2 c. Vermilion	5 c. Blue
---	-------------------	--------------

	5 c.	5 c. Ultramarine
---	------	---------------------



With Triangle and Oval with "PERU"

	1 sol Rose
---	---------------

50 c. Green	1 sol Rose
----------------	---------------

With Triangle and Oval with "LIMA"

50 c. Green	1 sol Rose
----------------	---------------

With Triangle and Horseshoe

	5 c. Ultramarine
---	---------------------



1884-86. As 1874

With grille

10 c. Slate

1 c. Purple	2 c. Green
----------------	---------------



20 c. Blue

1894. Stamps as before overprinted with Head



1 c. Green



As last, but with Horseshoe in addition

5 c. Blue	5 c. Ultramarine
--------------	---------------------



	5 c. Blue
---	--------------

1895. Provisional issues of old types in new colours

As 1874

As 1866

50 c. Rose	1 sol Blue
---------------	---------------



5 c. Lake		20 c. Blue
--------------	---	---------------

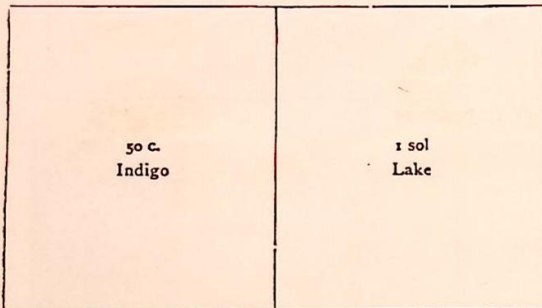
PERU—continued

1895. Perf.

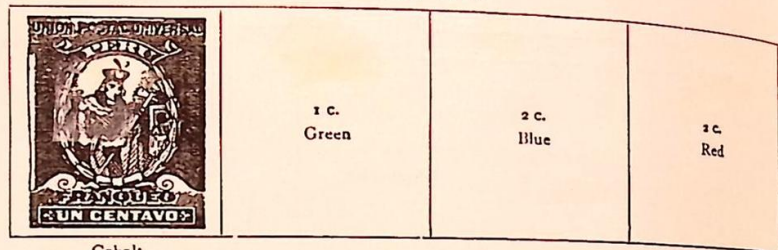


Purple

Vermilion



1896. Perf.



Cobalt



Yellow



Vermilion

1897. Perf.



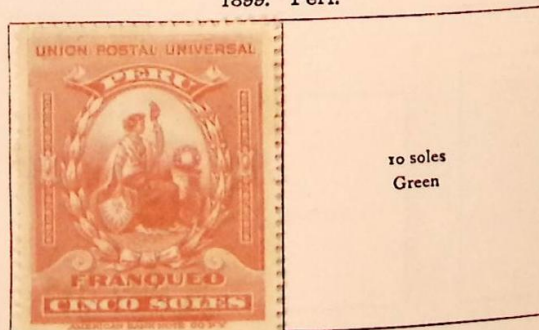
Bistre

1898. Perf.



Blue

1899. Perf.



Vermilion

1900. Perf.



Black and green



Rose



Black and green

Black and red

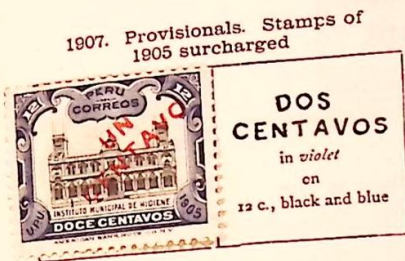
Black and lilac



Green



Black and blue



1907. Provisionals. Stamps of 1905 surcharged

DOS CENTAVOS
in violet
on
12 c., black and blue



Black and green



Violet and red



Olive



Black and blue



Black and brown



Black and green



Black



Green and violet



Black and blue



Slate

Green

Red

Violet

Prussian blue

Grey-blue

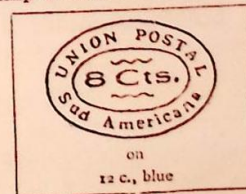


Chestnut

Bistre

Black and lake

Stamp of 1905 surcharged in red



on
12 c., blue



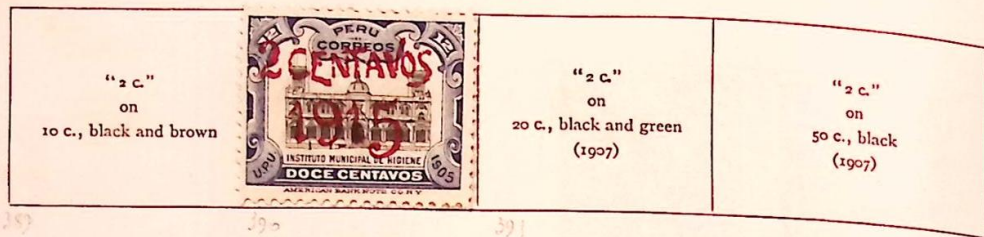
UN CENTAVO
1915
on
1 c., black and green
(1901)

"1 c."
on
10 c., black
(1900)



PERU—continued

1916—continued



Stamps of 1909 surcharged in red, green, or violet



Stamps of 1909 overprinted or surcharged



1918. Various portraits, heads in black. Perf.



Centres in black



1920. Perf.



Black and blue

1921. Perf.



Chestnut and brown

PERU—continued

1921—continued



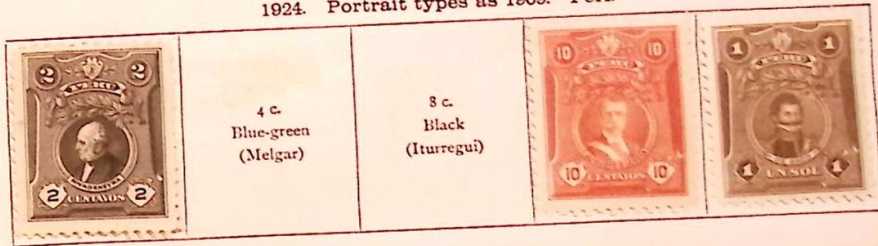
Violet

1923. As 1918
Surcharged

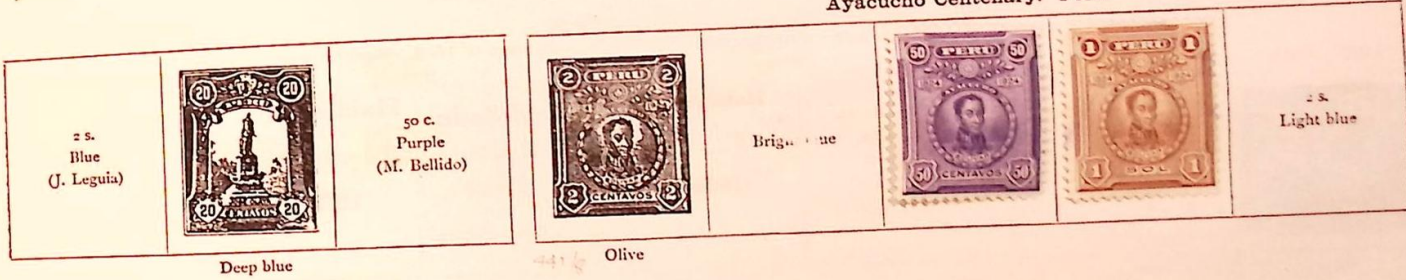
**CINCO
Centavos**

1923
on 8 c., black and
red-brown

1924. Portrait types as 1909. Perf.



Ayacucho Centenary. Perf.

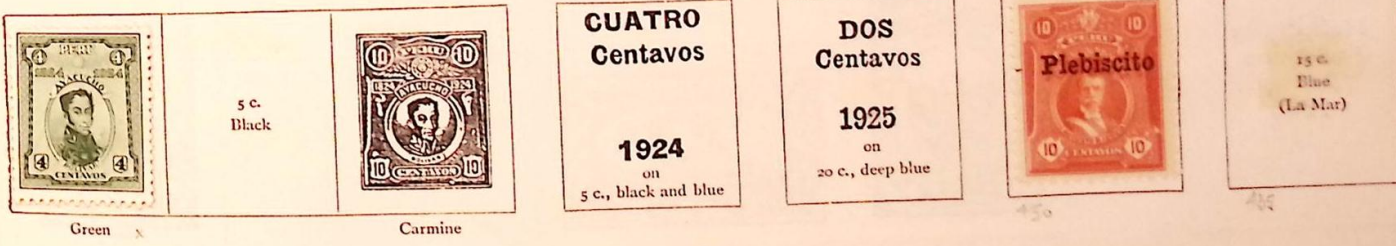


As 1918
Surcharged in red

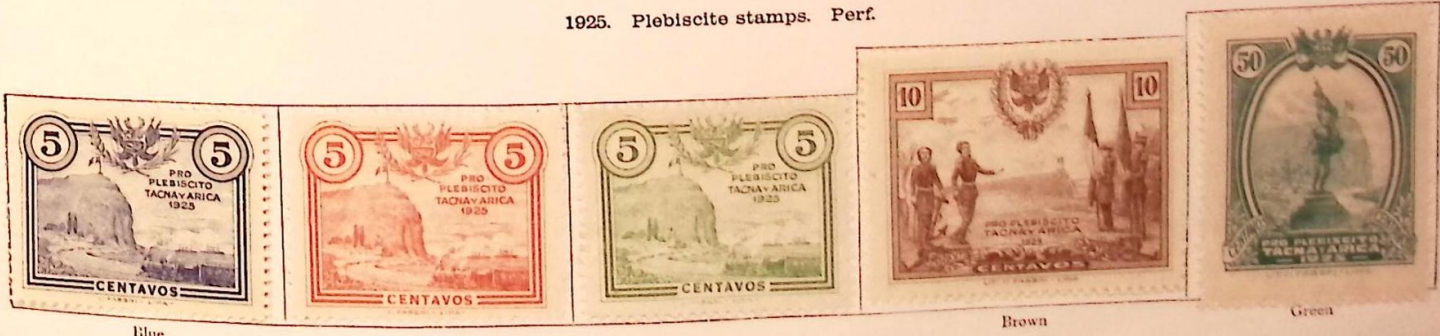
1925
As 1924

Overprinted

As 1909
New value



1925. Plebiscite stamps. Perf.



1926. Perf.



Orange

1927-28. Perf.



2 c.
Marone



1928. Air stamp. Perf.



Green

As 1924. Overprinted



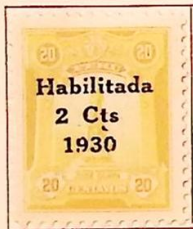
Red

1929-30

1929. As 1924



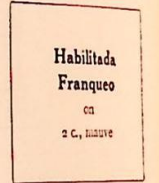
As last. Surcharged



Stamp of 1918. Surcharged



As 1928. Overprinted



1928. Perf.



Mauve

As 1928. Surcharged



1930. Perf.



Green



Scarlet

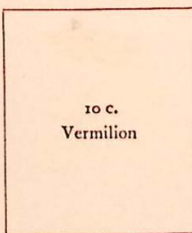


Brown

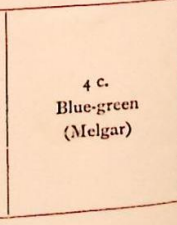
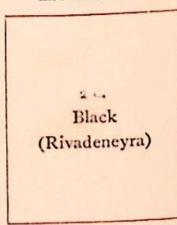
1930. Stamp of 1924 Surcharged



Overprinted only



As 1924. Redrawn with plain instead of lined backgrounds



Yellow

1930. Perf.

1930—continued

50 c. Purple (Maria Bellido)	1 s. Brown (De Saco)
------------------------------------	----------------------------



Brown

1931. As last. Surcharged



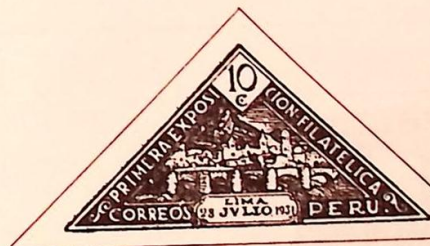
1931. Perf.



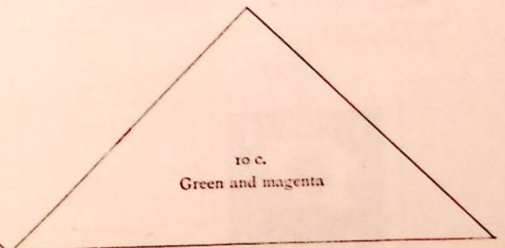
Green

Blue

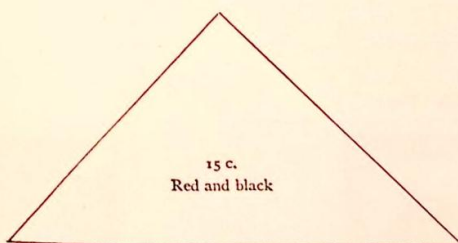
4 c. Brown	15 c. Green
---------------	----------------



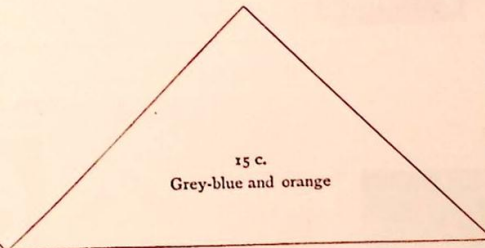
Carmine



10 c.
Green and magenta



15 c.
Red and black



15 c.
Grey-blue and orange



Grey-green

Deep green

Vermilion

1932. Perf.

Air stamp

15 c. Blue (Cotton plantation)



Yellow



Lilac



Brown

10 c. Blue



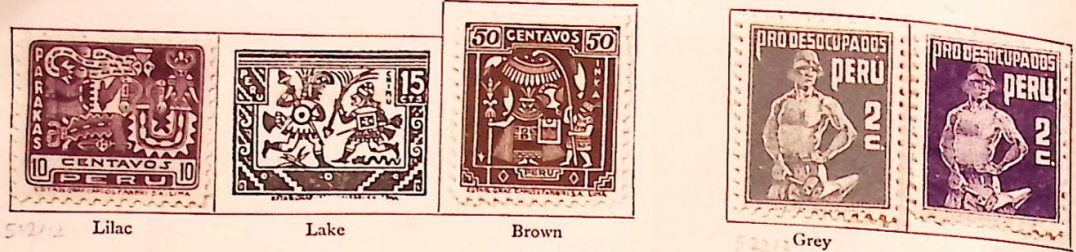
Mauve



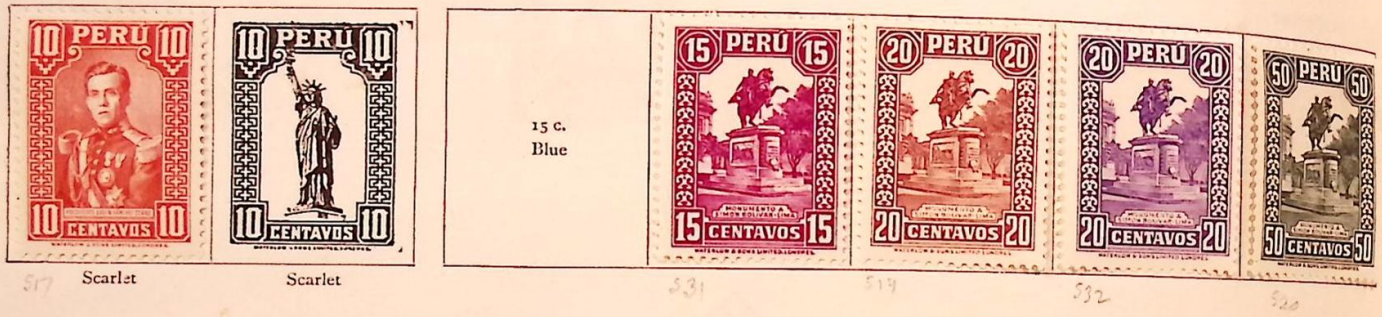
Red

PERU—continued

1932—continued



1932-35. Perf.



1934-35. Perf.

1934. Air stamps. Perf.



1935. Various designs, all dated "1585-1935". Perf.





PERU—continued

1935—continued

10 c. Red	15 c. Ultramarine	20 c. Slate-green	50 c. Olive	1 s. Blue
--------------	----------------------	----------------------	----------------	--------------



Air stamps

2 s. Red-brown		35 c. Brown	50 c. Yellow
-------------------	---	----------------	-----------------

1 s. Bright purple		5 s. Purple-lake	
-----------------------	--	---------------------	--


Orange

1935. Various designs, all dated "1633-1933". Perf.

		10 c. Magenta	20 c. Green
---	---	------------------	----------------

Black

59

	50 c. Brown and vermilion	1 s. Vermilion and violet
---	------------------------------	------------------------------

Red

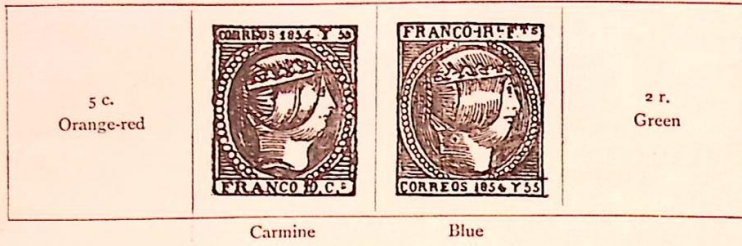
As 1934-35. Overprinted

Pro
Desocupados
2 c. Purple

PHILIPPINE ISLANDS

I. STAMPS ISSUED UNDER SPANISH DOMINION

1854



1859



1863



Feb., 1863
Inscription Roman



Dec., 1863
Inscription black letters



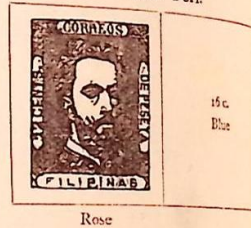
1864



1870. Perf.



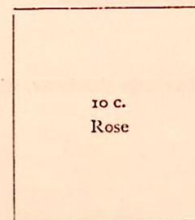
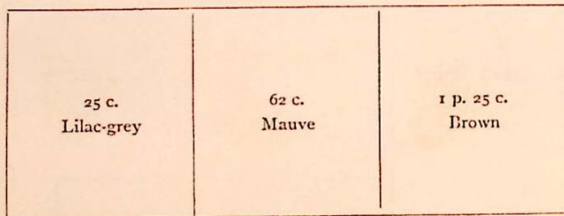
1872. Perf.



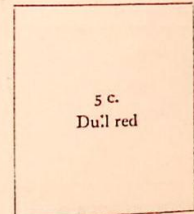
1869-74. Various stamps overprinted

**HABILITADO
POR LA
NACION.**

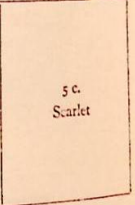
1859



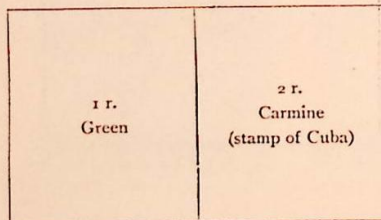
As 1859



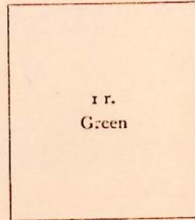
As 1883



As Feb., 1863



Dec., 1863



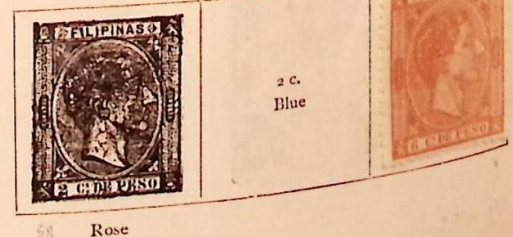
1864



1874. Perf.




1875. Perf.



PHILIPPINE ISLANDS—continued

1875—continued

10 c. Blue	12 c. Mauve		25 c. Green
---------------	----------------	---	----------------

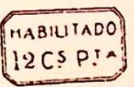
1877. Perf.

0.055 de peso Lilac-grey		25 m. Black
-----------------------------	---	----------------

Purple

	50 m. Dull purple		100 m. Green	125 m. Blue	200 m. Rose	250 m. Brown
---	----------------------	---	-----------------	----------------	----------------	-----------------

1877-79. Stamps of 1875 or 1877 surcharged





	"12 c." on 25 m., black
en 2 c., rose	

"2 c." on 25 m., green	UNIVERSAL ES CORREOS HABILITADO 8 cent. de peso on 100 m., carmine
------------------------------	--


1880. Perf.

						
--	--	--	--	---	--	--

Sepia

		8 c. Brown	10 c. Brown-lilac			12 c. Pink
---	---	---------------	----------------------	--	---	---------------

1880-80. Provisionals. Stamps of 1880 surcharged

20 c. Grey-brown	
---------------------	---

	on 2½ c., sepia
---	-----------------

	on 2½ c., blue
---	----------------

	on 2 c., rose (green)
---	--------------------------

	on 2½ c. blue (sage-green)
---	-------------------------------

In black, green or red

	on 2 c., rose
---	------------------

	on 5 c., lavender
---	----------------------

"1 real"
on
5 c., lavender

"1 real"
on
8 c., brown

"2 rs."
on
2½ c., blue

"10 cms."
on
2½ c., blue

"20 cms."
on
8 c., brown

PHILIPPINE ISLANDS—continued

1880-90—continued

In magenta



On 1 c., green

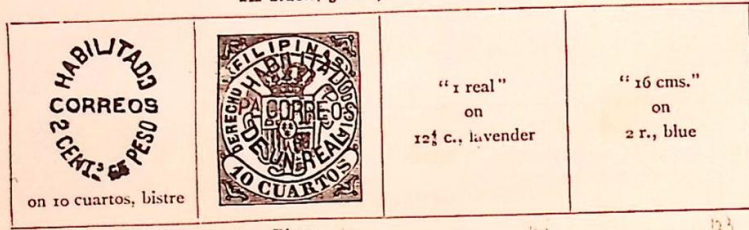
Newspaper stamp surcharged as last



Green (surch. "2 1/8 cms.")

Fiscal stamps inscribed "DERECHO JUDICIAL." Surcharged

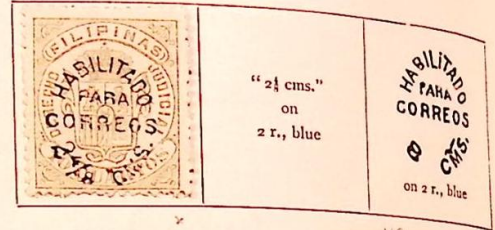
In black, green, red, or yellow



on 10 cuartos, bistre

Bistre

In black



on 2 r., blue

Fiscal stamps inscribed "DERECHOS DE FIRMA." Surcharged

In magenta

In yellow



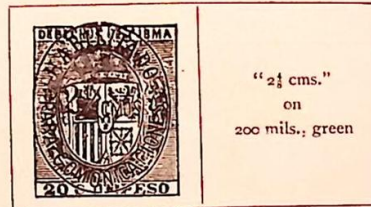
In red

In blue

In red

Bistre

Green



Brown

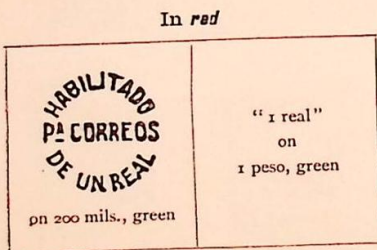


on 200 mils., green

Telegraph stamps surcharged

In black or red

In magenta



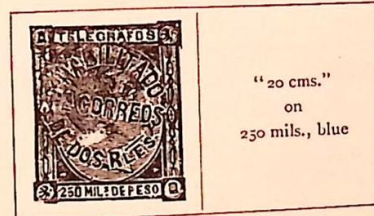
In red

on 200 mils., green

Surcharged as last



Bistre (surch. "1 real")



Blue



Bistre

1889. Perf.



162

163

165 Indigo

164

166

167

168

1891. As 1889



170

172

173

167

PHILIPPINE ISLANDS—continued

1892. As 1889



1894. As 1889



1896. As 1889



1897. As 1889



Stamp of 1880 similarly surcharged in red

1897. Stamps as 1889 surcharged in black, violet, red or blue



1898. Perf.



Purple



PHILIPPINE ISLANDS—continued

1898—continued



The Spanish American war in which the Spanish fleet was destroyed off Manila ended with the Treaty of Paris on 10.12.1898 by which Spain ceded the Philippines to the U.S. for \$20 mil. Military rule was followed by civil administration Jan. 4.7.1901.

II. STAMPS ISSUED UNDER UNITED STATES GOVERNMENT

1899. United States stamps of 1894 overprinted in black or red (dollar values). Wmk. U.S.P.S. Perf.



As last, but no wmk.

1903-4. Similarly overprinted in black



Green Scarlet Mauve

PHILIPPINE ISLANDS—continued

1903-4. In black—continued



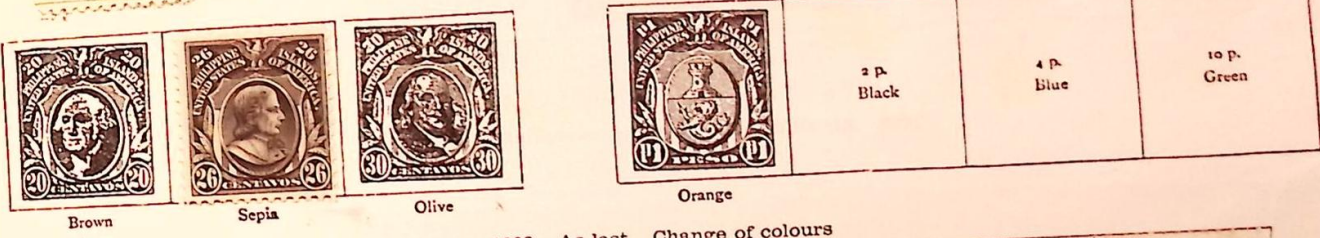
Brown Blue Lake Violet Brown Purple-brown

Oct., 1903. Similarly overprinted in black



Olive Orange Black Blue Green Carmine

1908. perf.

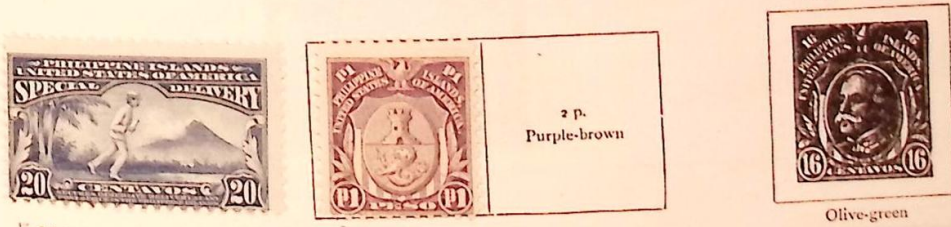


1909. As last. Change of colours



277 278 20 c. Yellow 20 c. Yellow 30 c. Ultramarine 30 c. Ultramarine

1923. Perf.



277a 278 2 p. Purple-brown 10 c. Olive-green

1926. Centres in black. Perf.



Green 10 c. Olive

PHILIPPINE ISLANDS—continued

1926—continued

18 c. Brown	20 c. Orange	24 c. Grey	1 p. Magenta
----------------	-----------------	---------------	-----------------

1926. Air stamps. Overprinted



Green Carmine Purple Brown Blue Orange Olive-green



Yellow Blue-green Grey Violet 2 p. Purple-brown 4 p. Blue 10 p. Green

Set Cat 2280 (1977)

1928. Air stamps. As last but overprinted



402/12

1932. Various designs. Perf.



4 c.
Carmine
(Post Office, Manila)

Green

12 c.
Orange
(Pier No. 7, Manila Bay)



Vermilion

20 c.
Yellow
(Rice plantation)

24 c.
Violet
(Rice terraces)



Sepia

PHILIPPINE ISLANDS—continued

1932. Air stamps. As last. Overprinted



437



1933. Arms type. Surcharged



1933. Air stamps. As 1908-9. Overprinted



440

As 1908. Overprinted

Air stamps
As 1932. Overprinted



443

450

450/5

1934. Perf.



Brown

1935. Various designs. Perf.



Blue

Purple

Carmine



6c

Green


6 c.
Chocolate
(Filipino girl)

PHILIPPINE ISLANDS—continued

1935—continued

	10 c. Carmine (Fort Santiago)	12 c. Black (Salt Springs)		Olive (Filipino natives)
Violet			Blue	

		1 p. Black and orange (Barasoain Church)	
Indigo	Vermilion		Black and brown

4 p. Black and blue (Montalban Gorge)	5 p. Black and green (George Washington on white charger)		6 c. Violet
		Carmine	

16 c. Blue	36 c. Yellow-green	50 c. Brown
---------------	-----------------------	----------------

1935. Air stamps
As 1935. Overprinted

1936. Perf.

POLAND

I. UNDER RUSSIAN RULE 1860. Perf.



Stamps of Bosnia, 1917, surcharged



1919. Stamps of Bosnia, 1918, overprinted



Stamps of Austria, 1916, overprinted



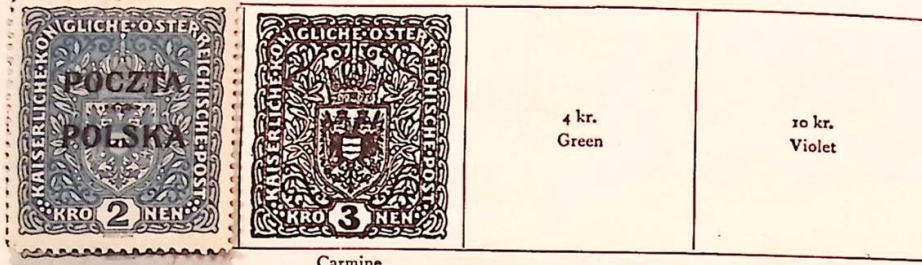
POLAND—continued

1919—continued



Olive

90 h.
Purple



Carmine

4 kr.
Green

10 kr.
Violet

1918 (174-177)

1919. Surcharged. Perf.



2/3

Brown

Green and buff

Carmine and buff

Blue and buff

1919. Imperf.



Lake

Olive

52. Polish Currency
103



Brown

Chestnut

Purple

POLAND—continued

1919—see last page



As last, but values in dollar (1/2 of amount in cents)



As last, 1919



1006 S 1919 10K violet, mint, slight of re-spread gum, has been seen at Philatelia Krakow and I-M.K. A rarity (photo)



POLAND—continued

1919. As last. Perf.



As last, but values in heller (h.) or kronen (k.). Imperf.



As last. Perf.



POLAND—continued

1919. Same types. Surcharged. Imperf.



As last. Perf.



1919. Imperf. Galicia - Eagles - Central Islands.



Lake



1919. Perf.



1217 Purple

Red

Brown

Olive

1920. Perf. Surcharged



Blue

Violet

Violet

POLAND—continued

1920. As 1919. Perf.



As last. Surcharged in red



1920. Perf.



Rose

1921. Perf.



Blue-green

Violet and buff



Green

Carmine

1922. As 1921



Violet

Smaller size

POLAND—continued

1922. Perf.



Blue

Chocolate



Slate



1922-24. Perf.



(100 m.) orange and brown

