





1849. Imperf.

		3 kr. Blue	6 kr. Brown	9 kr. Green	12 kr. Red	18 kr. Yellow
---	---	---------------	----------------	----------------	---------------	------------------

1862. Colours changed

	3 kr. Rose	6 kr. Blue	9 kr. Bistre	12 kr. Green	18 kr. Red
---	---------------	---------------	-----------------	-----------------	---------------

1867. Imperf.

	3 kr. Rose	6 kr. Blue	6 kr. Bistre	7 kr. Blue	9 kr. Bistre
--	---------------	---------------	-----------------	---------------	-----------------





1870. As last, wmk. "Lozenges." Perf.

12 kr. Lilac	18 kr. Red			6 kr. Bistre	
-----------------	---------------	---	---	-----------------	---

Wmk. "Lozenge"

1874. Imperf.

1875. Perf.


			18 kr. Red		1 mk. Mauve
---	---	---	---------------	--	----------------

1875. Type as 1870. Wmk. "Wavy lines wide apart." Perf.

					
---	---	---	---	---	--

# BAVARIA—continued

1876. Currency changed. Wmk. as last. Perf.

	5 pf. Green	5 pf. Mauve	10 pf. Rose	10 pf. Carmine	20 pf. Blue
75	Green	100	30	52	

Same wmk. Perf.

25 pf. Brown	50 pf. Vermilion	50 pf. Brown	1 mk. Mauve (1874 type)	2 mk. Orange (1874 type)
-----------------	---------------------	-----------------	-------------------------------	--------------------------------

1881. Same types. Wmk. "Wavy lines close." Perf. *Horizontal lines*

2 pf. Grey					
102	109a	30	121	31	107

			20 pf. Ultramarine		
123	124	125		126	125

		50 pf. Brown		
126	127		128	129

1 mk. Lilac	2 mk. Orange	3 mk. Stone	5 mk. Green
----------------	-----------------	----------------	----------------

1911. Wmk. horizontal wavy lines. Perf.

				
3 pf., brown on drab	100c	140/140 d	141 b	142 (11)

BAVARIA—continued

Issue as last—continued



1908-10



1909-10

1910

1910

1911. No wmk. Perf.



1910

1912. Wmk. wavy lines. Perf. or imperf.

1913. Wmk. wavy lines. Perf. or imperf.



1913 A

Brown



Grey-brown

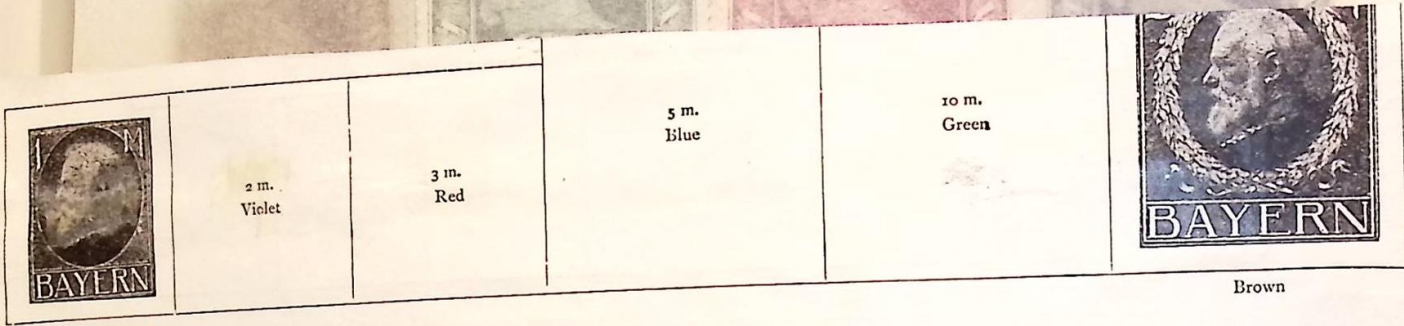


Deep brown

Issue as last - continued

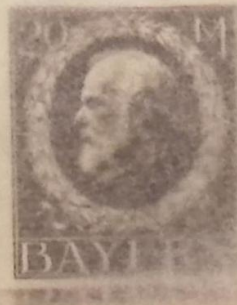


Olive on buff



Brown

Stamps of Germany overprinted Freistaat Bayern



100,00

500,00

BAVARIA—continued

Issue as last—continued



Olive on buff



Brown on drab

129 Type 1

1911. No wmk. Perf.

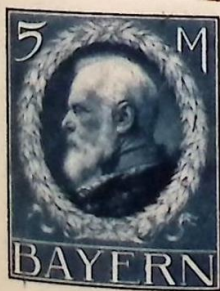


120

1913. Wmk. wavy lines. Perf. or imperf.

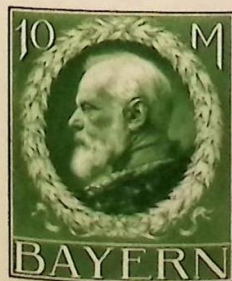


Brown



150,00

300,00



# BAVARIA—continued

1915. New values. As 1913



Surcharged



1919. Overprinted **Volksstaat Bayern**



Brown



Brown

Brown

Stamps of Germany overprinted **Freistaat Bayern**





BAYERN

BAYERN

BAYERN



# BAVARIA—continued

Stamps of Germany overprinted—continued



Stamps of Bavaria. As 1919. Overprinted **Freistaat Bayern**



Surcharged



Surcharged



As 1878 Surcharged



1920. Perf.



Green

Violet

BAVARIA—continued

1920—continued



Red

Slate and red



270

Orange



5145/208



625/228



1870 Postage Due 0.65/L

D 34

10/200

RAILWAY STAMPS



R 106/2



Reverse E. (not listed)



290



R 105/3



25



R 132/7

# BELGIAN CONGO FORMERLY CONGO FREE STATE

## I. CONGO FREE STATE

1885. Perf.



1887. Perf.



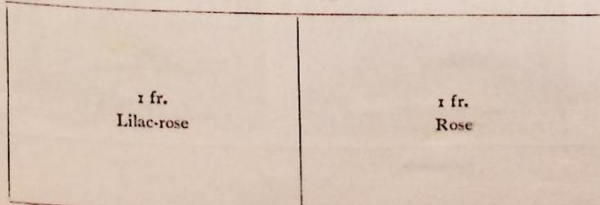
1894-96. Centre in black. Perf.



1898. Centre in black. Perf.



1900. Colours changed. Centre in black



# BELGIAN CONGO—continued

## II. BELGIAN CONGO

1909. Stamps of 1894-96 and 1900 overprinted CONGO BELGE in black



10 fr.  
Black and green

Jan., 1910. Centre in black. Perf.



Green

Carmine

Ochre

Olive-green

1910. Centres in black. Perf.



Green

Blue

Green



Olive-bistre

Ochre

Rose

Claret



Vermilion

Green

1915. Same and new types. Colours changed. Centres in black. Perf.



Green

Blue



1918. As last, but centres in blue. Surcharged in red



1920. Centres in black. Perf.



Orange

Lilac

Blue

Green

# BELGIAN CONGO—continued

118

1921. Stamps of 1910 surcharged in black or red. Centres in black



Overprinted 1921



1922. Stamps of 1915 surcharged in black or red



1922. As last, new surcharge



1923. Perf.



Yellow

Blue



# BELGIAN CONGO—continued

1923-27. Perf.



Olive

Rose



Chestnut

Red-orange



Brown



Sepia

Slate

Black

1925. Surcharged

1926-27. Perf.



Black and carmine



Carmine

1927. Surcharged



BELGIAN CONGO—continued

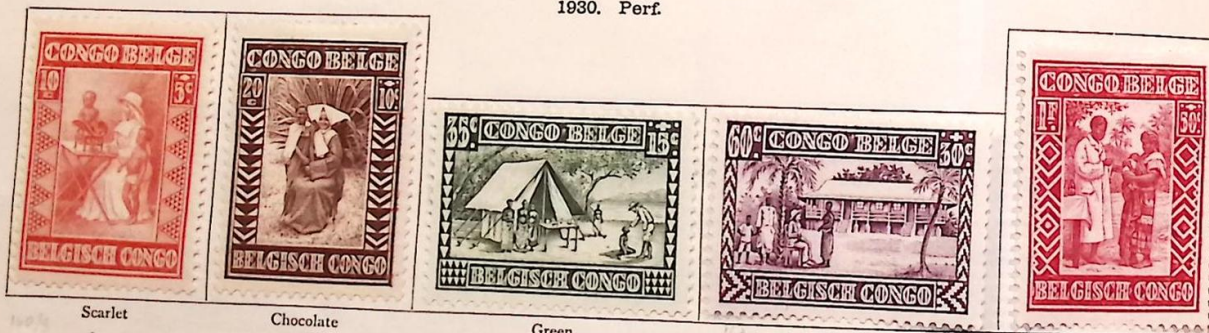
1928. Perf.



Green



1930. Perf.



Scarlet

Chocolate

Green

Purple

Carmine



Blue

Lake

Brown

Black

1930. Air stamps. Perf.



Black and sepia

Black and purple

# BELGIAN CONGO—continued

1931. Various stamps surcharged

Stamps of 1928

Pictorial stamps of 1923-27



1932. Various designs. Perf.



Grey



Green



Red-brown



# BELGIAN CONGO—continued

1933. Air stamps. Perf.



Black



1934. Margins in black



Black

1936. As last. Surcharged in blue



1935. Perf.



Green

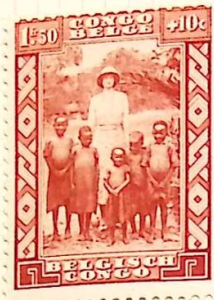


1936. As last. Surcharged in blue or red




2192  
(2163) 1916  
44922

142





2175

1863. Perf.

	10 c. Brown	20 c. Blue	40 c. Red
--	----------------	---------------	--------------



1865. Perf.

		30 c. Ultramarine	40 c. Lilac			
Grey	Blue			Brown	Carmine	Violet

1866. Perf.

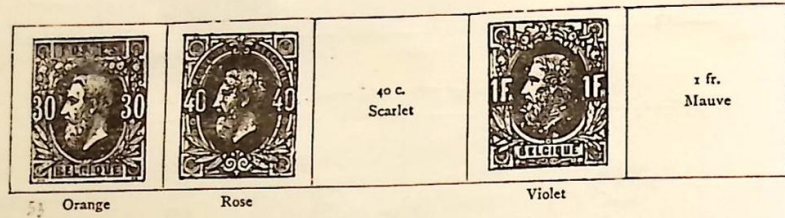
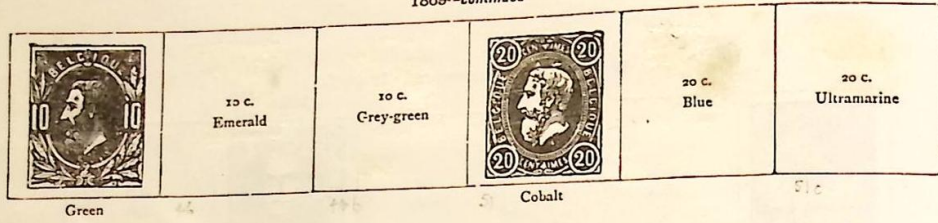
	1 c. Black		3 c. Ultramarine	5 c. Brown
Grey				

1869. Perf.

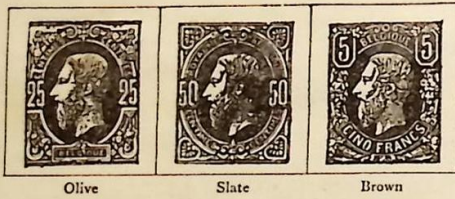
	1 c. Green		3 c. Ultramarine	4 c. Lilac	5 c. Orange	6 c. Violet
Green						

# BELGIUM—continued

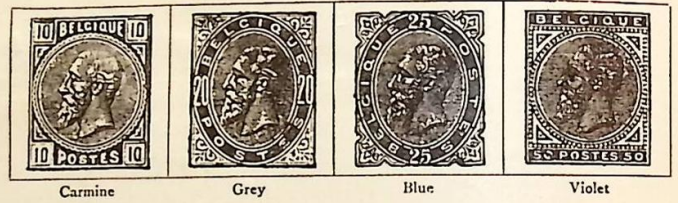
1869—continued



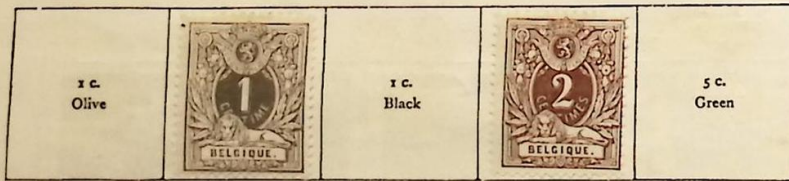
1875. Perf.



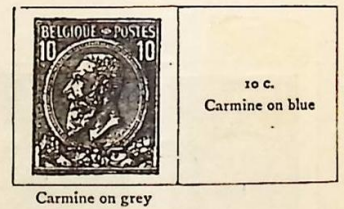
1883. Perf.



1884. As 1869. Colours changed



1884. Perf.



1893. Perf.



Labels issued "do not deliver on a Sunday" known as banderoles

1893—continued



1896. For Brussels Exhibition. Perf.

1894. For Antwerp Exhibition. Perf.



Carmine on blue

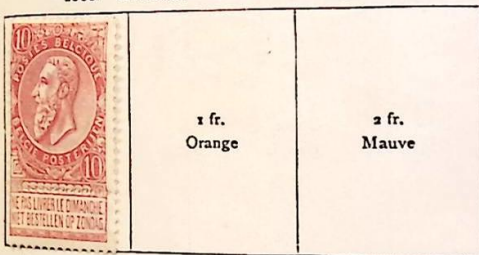


Purple

Yellow-brown

1905. Perf.

1900. As 1893. Colours changed



Carmine

Olive

Cobalt

1907. Perf.



Grey

Orange

Mauve



106 Type 1

Green

1910. For Brussels Exhibition. Perf. 1st type



Green

# BELGIUM—continued

Brussels Exhibition issue—continued. 2nd type



Marone

As last. Overprinted "1911" in black. 1st type



2nd type



As last. Overprinted "CHARLEROI—1911." 1st type



2nd type



1912. Perf.



Orange

Green

136 Carmine



137

141

142

143

Purple

1912-13. Perf.



144

145

146

150 Blue

147

148

149

1914-15. Red Cross stamps. Perf.



Red and green



Red and green

1915. Government in Exile German troops invaded on 28 Aug 1914



Red and green

BELGIUM—continued

1915. Perf.



Sepia



Black and chestnut

Black and green

Black and carmine

Violet

1918. As last. Surcharged in red



Sepia



1919-20. Perf.



Chocolate

Sepia



1919-20—continued



1919. Perf.



Indigo

Perf.



Black and claret

As 1915



1920. Perf.



Green



Carmine



Brown

1921. As last. Surcharged in black or red



1922. As 1919, surcharged

1921. Perf.



1922. Perf.

Brown

1921-25. Perf.



Purple



314 315 316 Sepia 317

1923. Perf.



Slate

1924-27. As 1921-25 (25 c.). New values



30 c. Magenta



BELGIUM—continued

1925. Perf.

1924-27—continued



Green



1926. Perf.

1925. Perf.



Red and grey

Overprinted in red



Blue

Turquoise

# BELGIUM—continued

1926. Perf.



Brown

Carmine

1927. As 1921-25 (25 c.). Surcharged in red or blue



1927-28. As 1924-27



1927. Perf.



Green

1928. Perf.



Scarlet and gold

Green

Chocolate



Sepia

1928. Perf.



Carmine

Sepia

BELGIUM—continued

1928—continued



Green

Chestnut

Violet

Purple

1929. Perf.



Sepia



Slate



Green



Lake



Blue



Purple

As 1924-27. Surcharged



1929-30. Perf.



Orange



1930. Air stamps



Slate



1930. Perf.

Air stamp



Blue-green



Blue-green



Blue

1930. Stamps of 1930 overprinted

1930. Perf.



(c) Green



1930. Views of various castles. Perf.



Sepia

1930. Air stamp as 1930  
New colour



Green



1931. As 1929-30. Surcharged



On 60 c., magenta

1932. As last but dated "1932"



1931. Perf.



Brown



Brown-red



Slate



BELGIUM—continued

1931—continued



1931. Perf.



Brown

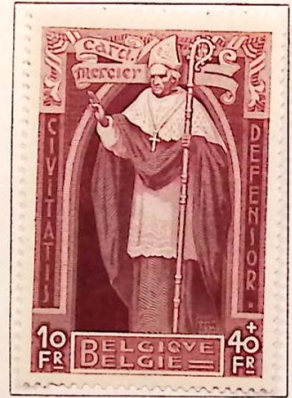
1932. Perf.



Carmine



Brown



1932. Perf.



Green



Vermilion



Brown



Brown

1932. Perf.

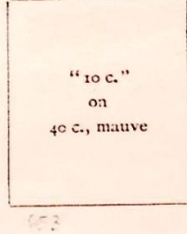


Brown-lake

As 1930. Surcharged as in 1931  
Dated "1933"



Dated "1934"



1934. Margins in black



Black

1933. Various designs. Perf.



Sage-green

Lake



Magenta



Grey

BELGIUM—continued

1933—continued



Olive-brown

1934. Perf.



Green

1934-35. Perf.  
Smaller design



Red

1934. Perf. Larger design



Grey

1935. Air stamps of 1930. Surcharged in red or blue



1935. Perf.



Grey



Green



Olive

1935. Margins in black. Perf.



Black



1936. Perf.



Vermilion



76 + (1256)



BELGIUM—continued



1027 7714



1036 7712



716 Stamp Day



1037 7715



1017+

# BELGIUM (Occupation of Germany)

1919. Stamps as 1915. Overprinted



1921. Stamps of 1919. Similarly overprinted



1920. Stamps of 1915. Surcharged



1920. Stamps as 1915-19. Overprinted Eupen



BELGIUM (Occupation of Germany)—continued

Eupen



1920. Stamps as 1915-19. Overprinted Malmédy



Malmédy



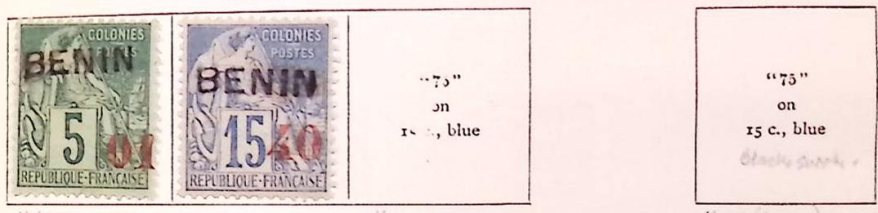
No decision was held but voters who desired the territory to remain in Germany were requested to sign a public register. Few did this and on the 20th Sept 1920 the Council of the League of Nations placed the territory under Belgian sovereignty.

# BENIN

1892. French Colonial stamps of 1881 overprinted "BENIN". Perf.  
In black.



With "Benin" in black and surcharged with new value  
In red



1893. Perf.



1894. Perf.



# BERGEDORF

1861. Black on coloured papers



Blue

Black on white

Yellow

Rose

Brown

*2 reprints in figures 10*

# BOLIVAR

*Dept. of Colombia from 1863*

1863



Green

Red

1872



Blue

Mauve

Green

Vermilion

1874



Blue

Mauve

1878



Blue

1879. Perf.



Blue

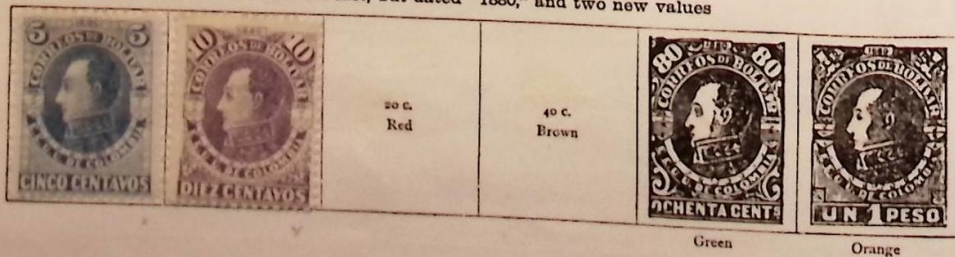
Mauve

Red

Brown

*Laid paper 14*

1880. As last, but dated "1880," and two new values



20 c.  
Red

40 c.  
Brown

Green

Orange

1882. Perf.



to p.  
Marone and blue

Blue and carmine

1882. Perf.



Blue



Lilac



Carmine



Brown

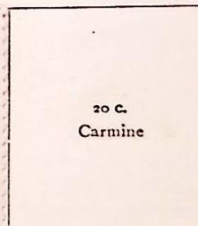


Green



Orange

As last, dated "1883"



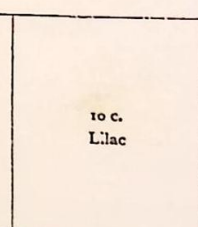
20 c.  
Carmine



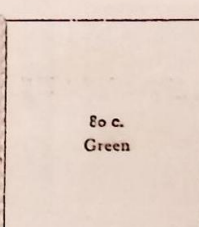
Dated "1884"



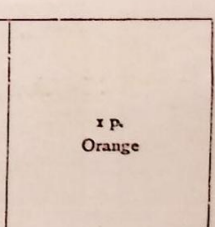
5 c.  
Blue



10 c.  
Lilac

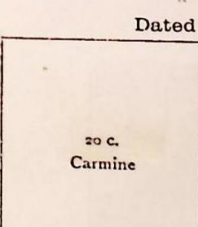


80 c.  
Green

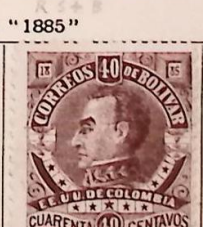


1 p.  
Orange

Dated "1885"



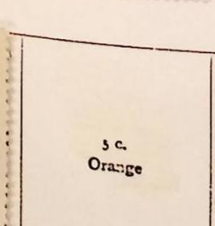
20 c.  
Carmine



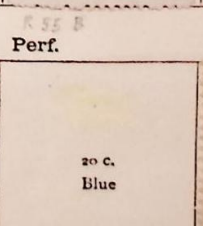
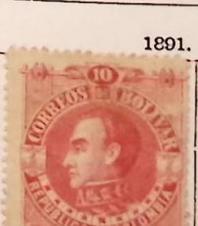
1891. Perf.



Black



5 c.  
Orange






20 c.  
Blue





BOLIVAR—continued

1903. Imperf.

	50 c. Blue on rose			1 p. Green on lavender	1 p. Orange on green	1 p. Green on yellow
---	-----------------------	---	---	---------------------------	-------------------------	-------------------------

Green on rose

Vermilion on red

	5 p. Red on yellow	5 p. Red on brown	5 p. Red on green		10 p. Blue on lavender	10 p. Purple on green
---	-----------------------	----------------------	----------------------	---	---------------------------	--------------------------

Red on lavender

Blue on green

Perf.

50 c. Blue on Rose	50 c. Blue on bluish	1 p. Vermilion on red	1 p. Green on lavender	5 p. Red on lavender	5 p. Red on brown	10 p. Blue on green
-----------------------	-------------------------	--------------------------	---------------------------	-------------------------	----------------------	------------------------



Black



Brown



Scarlet



Imperf.



Black



Blue



Mauve



20c

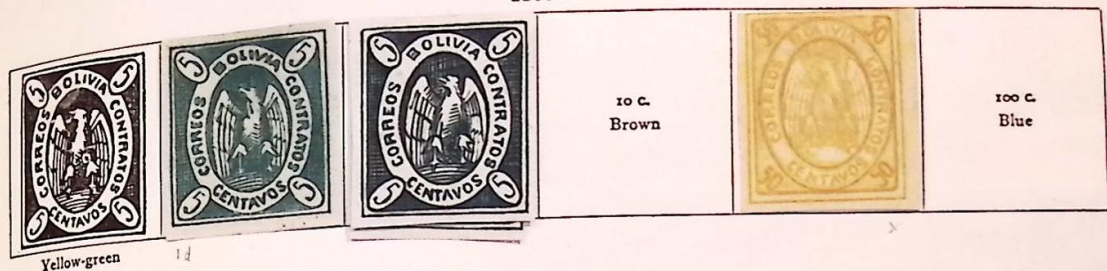


Acknowledgment in Receipt

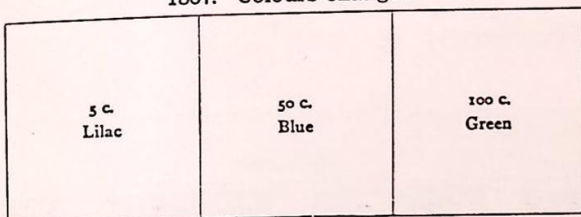


20c late fee

1866



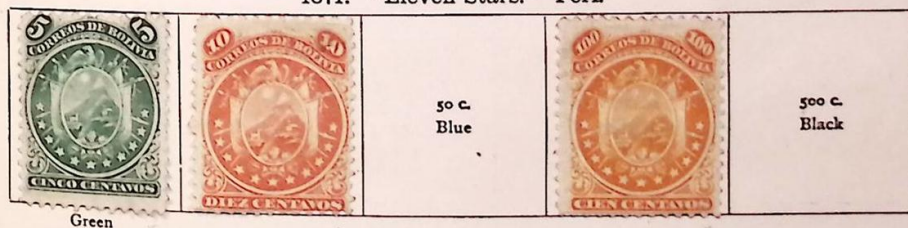
1867. Colours changed



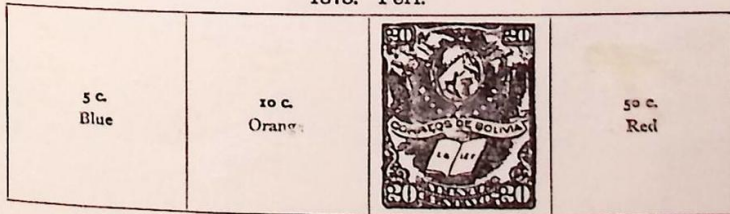
1867. "Eleven Stars" Perf.



1871. "Eleven Stars." Perf.



1878. Perf.

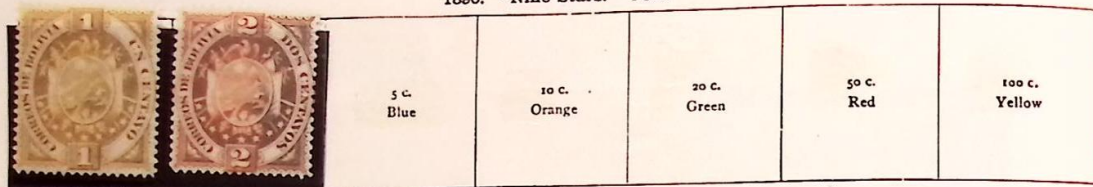


1887. "Eleven Stars." Rouletted



BOLIVIA—continued

1890. "Nine Stars." Perf.



Carmine

1894. Perf.



Ochre

1897. Perf.



Olive

Vermilion

Green

Chocolate

Rose and black

Orange

1899. Stamps of 1894 overprinted

*Estado Federal - used in northern  
Bolivia - 1899-1901*

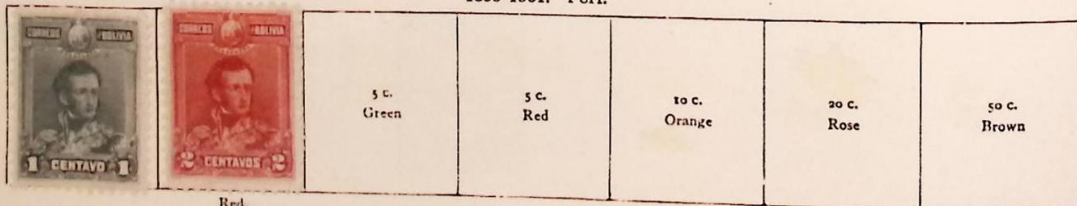
E. F.  
1899



Blue

Red, yellow, green, and black

1899-1901. Perf.



Red

1901-4. Perf.



1 bol.  
Violet

Claret

Green

Red

Blue

Purple and black

Brown

# BOLIVIA—continued

1909. Centres in black. Perf.



Blue

Green

Orange

Red

1909. Centres in black. Perf.



Chocolate

Green

Red

Prussian blue

Violet

As last, but heads, dates, and colours altered



Bistre

Brown

Chocolate

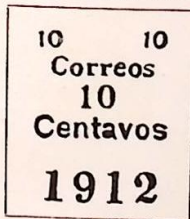


1911. As 1901-4 surcharged



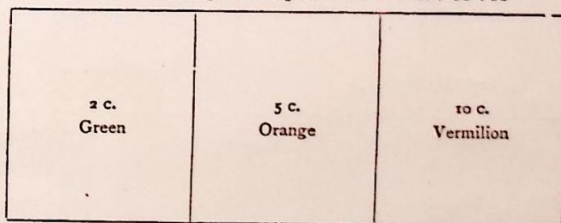
"5 c."  
on  
20 c., black and lilac

1912. Fiscal stamp surcharged

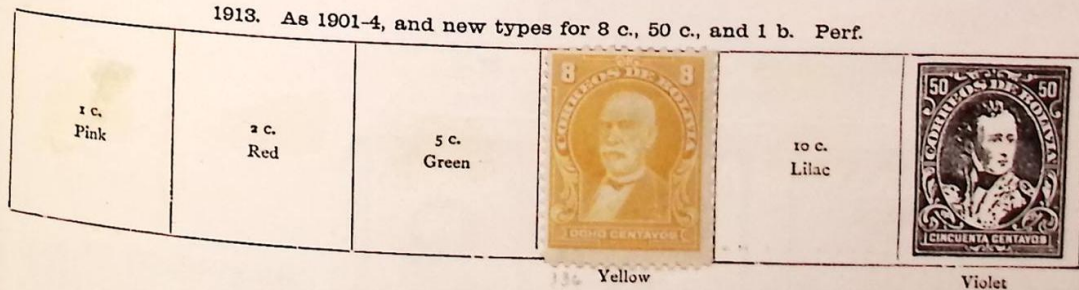


to c. on 1 c., blue

Similar stamps overprinted in black or red



1913. As 1901-4, and new types for 8 c., 50 c., and 1 b. Perf.



1 c.  
Pink

2 c.  
Red

5 c.  
Green

Yellow

10 c.  
Lilac

Violet



Slate-blue

BOLIVIA—continued

1916. Perf.



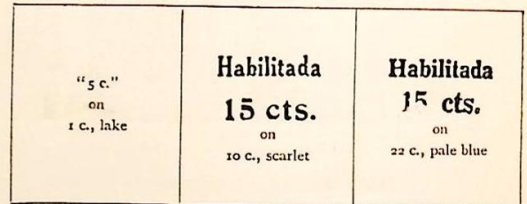
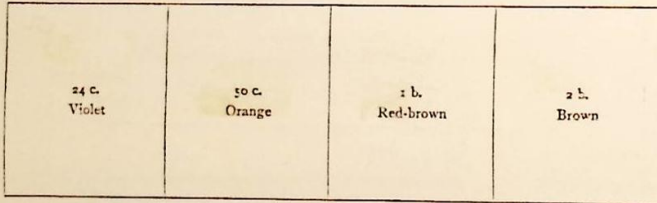
1/2 Brown Green Black and rose Blue Blue and orange

1919-23. Perf.



Lake Violet Green 10 c. Orange 22 c. Pale blue

1923-24. As last. Surcharged in blue or black



1924. Centres in black. Perf.



Blue

1925. Perf.

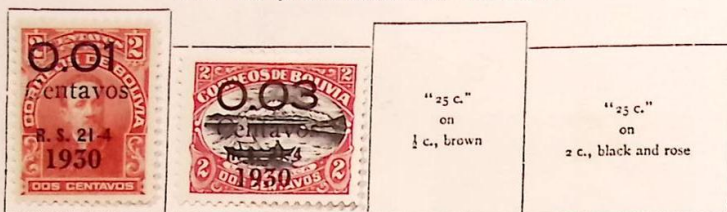


Red on green Red on yellow Red Blue Violet



BOLIVIA—continued

1930. Stamps of 1913 and 1916. Surcharged



1930. Air stamps of 1924 surcharged or overprinted



Air stamps of 1928 surcharged



Air stamps. Perf.

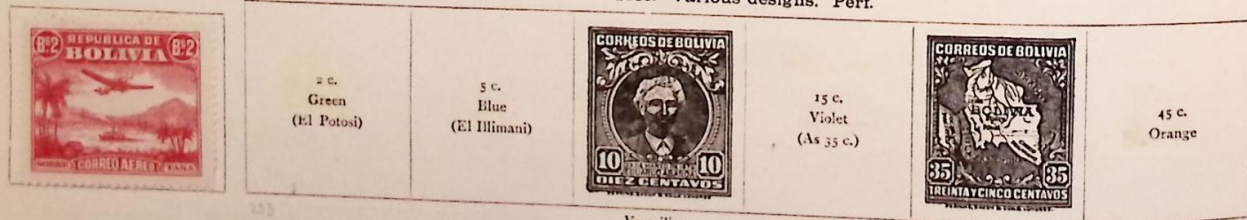


Green



Red

1930. Various designs. Perf.



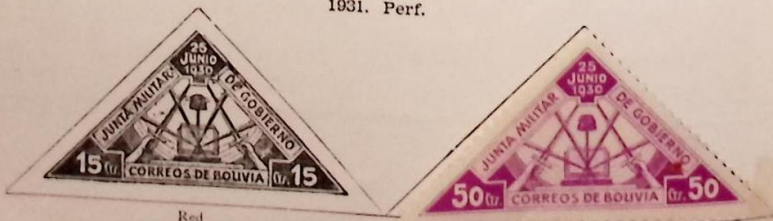
Vermillion

Carmine



Slate

1931. Perf.



Red

1932. Air stamps. Perf.

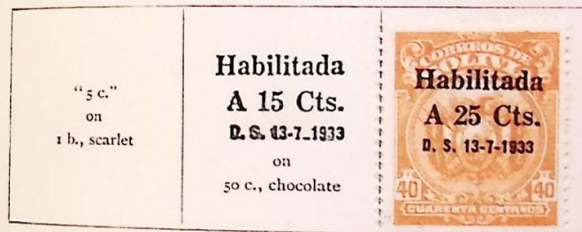


Carmine



1933. Surcharged

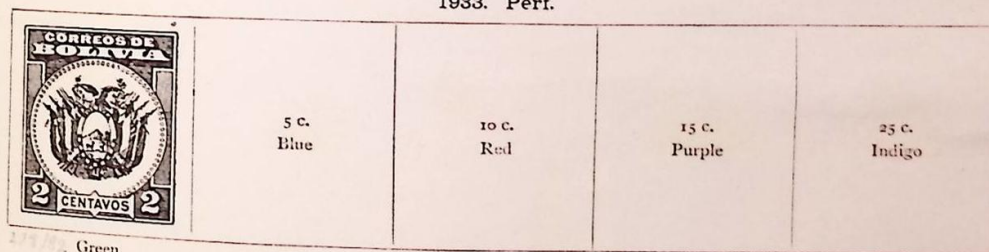
Stamps of 1928



Stamps of 1930

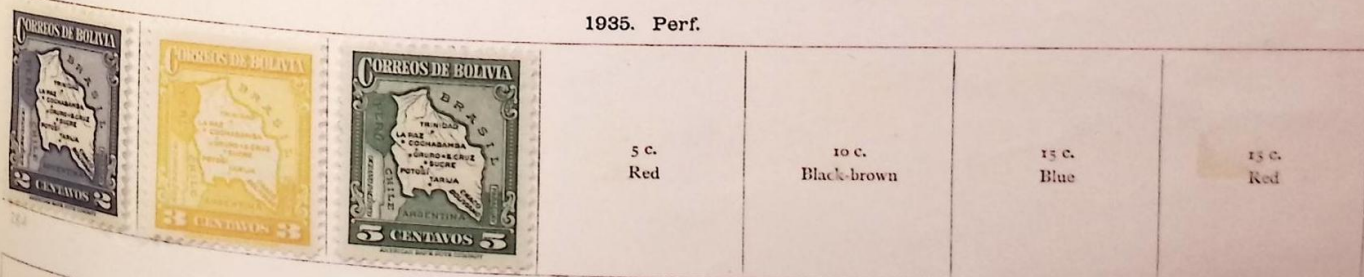


1933. Perf.

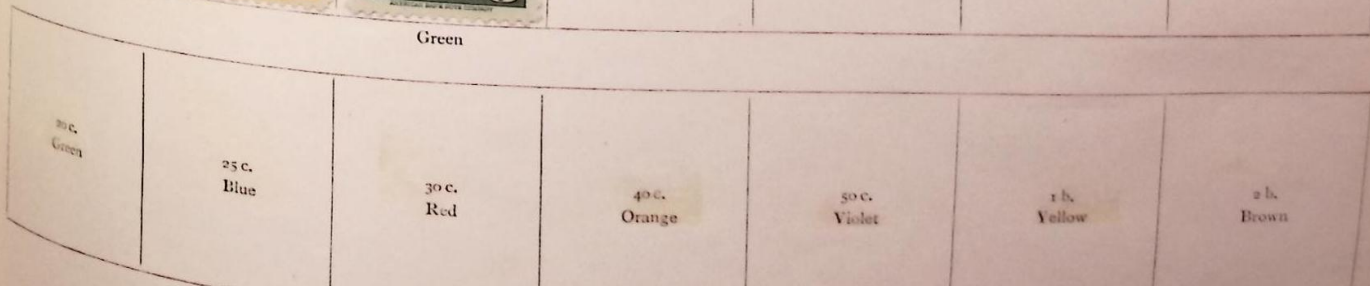


Green

1935. Perf.



Green



BOLIVIA—continued

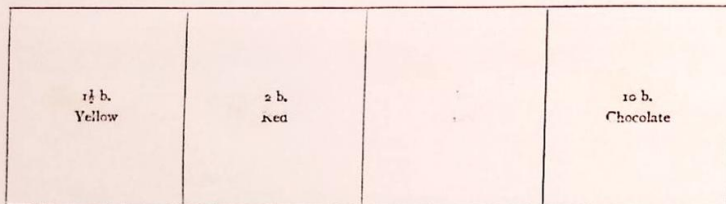
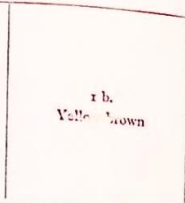
1935. Air stamps. Perf.



Violet



Red-brown



Not issued (also after 1911)



Postal Stationery



D 24276 (1931)

1879. Value (nov.) in upper corners. Perf.



Grey



to  
Blue

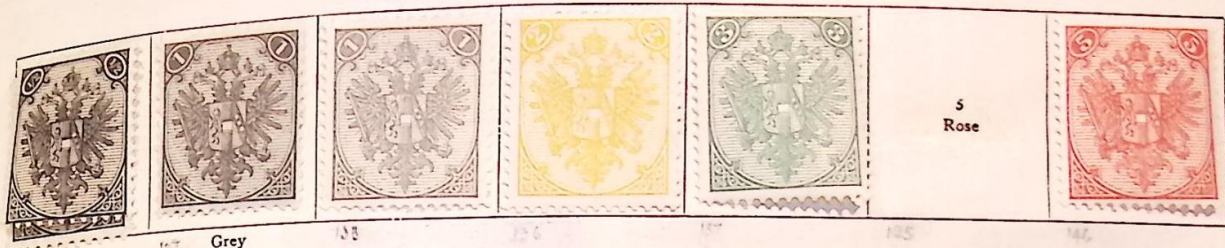
1900  
*Import colour prints not cat.*



1900-4. As 1900, but numerals in black



1879. Value (nov.) in upper corners. Perf.



1900. Value (heller) in lower corners. Perf.



Value (krone) in all corners



Red

1900-4. As 1900, but numerals in black



## BOSNIA AND HERZEGOVINA—continued

1906. Perf.



Black

Violet

Yellow

Green



Orange-brown

Red

Brown

Blue



Green

Blue-black

Orange

Vermilion



Purple

Lake

Bronze

Blue

1910. As 1906, but with dated label added at foot



Black



# BOSNIA AND HERZEGOVINA—continued

1910—continued



Lake

1912. Perf.



Blue



Slate



Carmine

1912. Perf.



Green



Black



BOSNIA AND HERZEGOVINA—continued

1912—continued



372 Lake on cream

Lilac on grey

1914-15. Pictorials of 1908 surcharged (dated 1914 or 1915)



1915-16. Wider surcharge (dated 1915 or 1916)



1916. Perf.



Green

Blue-green

1917. Stamps of 1916-17 surcharged



1916-17. Perf.



Sepia



Green on blue



N. 122

N. 11/12



N. 123



N. 124





F. C



F. C E



F. C



E. C



M. C E



F. C



C



C.



C.



G



Colour Prints (40)  
No gum

30th Oct 1916 - Postage Due D 41/23.



BOSNIA AND HERZEGOVINA—continued

1917. Perf.



Slate

Blue

1917. Perf.



Grey



1918. Perf.



Green

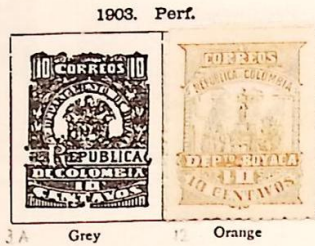
Red

1918. As 1910 and 1912, overprinted



# BOYACA

*State of the Granadine Confederation  
Dept of Boyaca*



Perf. 1903. Black on coloured papers



1890. Perf.

		100 r. Mauve	Violet	300 r. Slate	500 r. Slate
--	--	-----------------	--------	-----------------	-----------------

Green

700 r. Brown	1000 r. Yellow	1891. Perf. 	1893. Perf. 	1894. Perf. 	20 r. Orange and blue
-----------------	-------------------	-----------------	-----------------	-----------------	--------------------------

Blue and red

Rose

Rose and blue

	Orange and black	300 r. Green and black				200 r. Grey and black
--	------------------	---------------------------	--	--	--	--------------------------

Rose and black

Green and mauve

1898. Newspaper stamps surcharged. Rouletted

1897. Perf. 			"300" in violet on 200 r., black		"500" in red on 300 r., black
-----------------	--	--	---	--	--

Rose and blue

"100" on 50 r., orange

	"700" in green on 500 r., orange		"1000" in yellow on 700 r., blue		"2000" in yellow on 1000 r., blue
--	---	--	---	--	--

"700"  
in green  
on  
500 r., orange

"1000"  
in yellow  
on  
700 r., blue

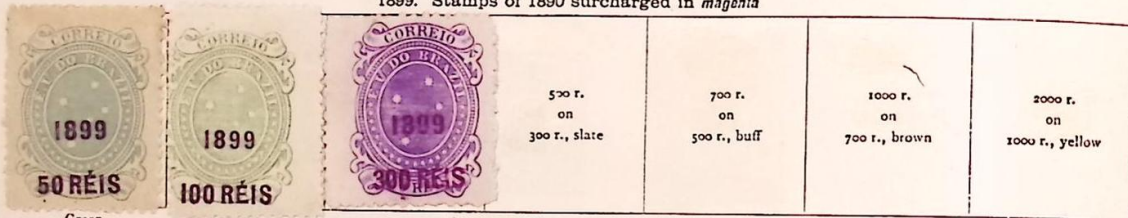
"2000"  
in yellow  
on  
1000 r., blue

BRAZIL—continued

1898. Newspaper stamps surcharged



1899. Stamps of 1890 surcharged in magenta

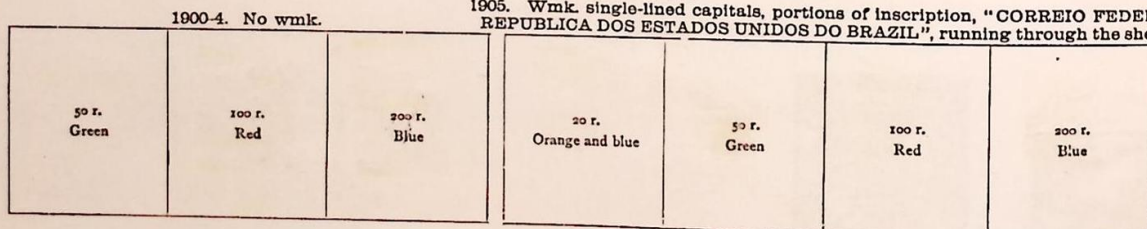


1900. Commemorative stamps. Perf.

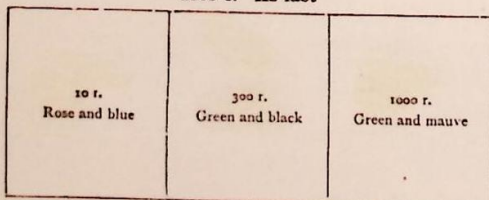


Types of 1894 issue. Perf.

1905. Wmk. single-lined capitals, portions of inscription, "CORREIO FEDERAL REPUBLICA DOS ESTADOS UNIDOS DO BRAZIL", running through the sheet



1905-6. As last



1906. Commemorative stamps. Perf.



1906. Perf.



# BRAZIL—continued

1906—continued



1908-9. Commemorative stamps. Perf.



Rose



Carmine



Blue



Green

1910. Perf.



Brown

1915-16. Same types, colours changed. Perf.



Bright green



Ultramarine



Violet



Slate



Blue-green

5000 r.  
Brown  
(as 1906, 700 r.)

1915-17. Commemorative stamps. Perf.



Green



Carmine



Blue

1918. Perf.



Olive



Rose



1920. As last

600 r.  
Orange

1000 r.  
Blue



Brown

5000 r.  
Violet

2000 r.  
Violet

5000 r.  
Brown

BRAZIL—continued

1920. Perf.



Purple

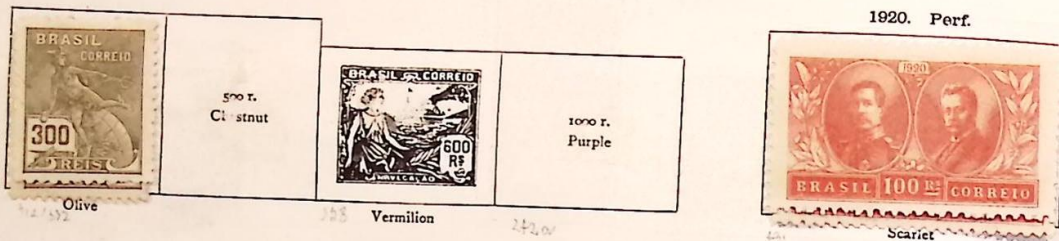
Green

Rose

150 r.  
Violet

200 r.  
Blue

1920. Perf.



Olive

500 r.  
Cl. stnut

Vermilion

1000 r.  
Purple

Scarlet

1922. Perf.



Blue

Red

Green

1923. Perf.



Red

1922-23. As 1920



Brown

Brown

Orange

(400 r.) Blue

1924. Perf.



Blue, red and yellow

1925. Perf.



Claret

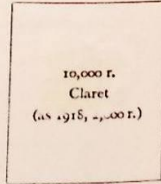
1927. Perf.



Blue

Carmine

1928. Perf.



10,000 r.  
Claret  
(as 1918, 2,000 r.)




1928. Official stamps of 1913, surcharged. Centres in black



"100 r."  
on  
purple

"1000 r."  
on  
grey


1928—continued

<p>"2,000 r." on 100 r., red</p> 	<p>"2,000 r." on 10,000 r., black</p>	<p>"5,000 r." on 20,000 r., blue</p>	<p>"5,000 r." on 50,000 r., green</p>	<p>"5,000 r." on 100,000 r., vermilion</p>		
--	---	--	---	--	---	---


Official stamps of 1919, surcharged in red or black

<p><b>700 Réis</b> on 500 r., orange</p>	<p>"1,000 r." on 100 r., carmine</p>	<p>"2,000 r." on 200 r., blue</p>	<p>"5,000 r." on 50 r., green</p>	<p>"10,000 r." on 10 r., brown</p>
--	--	---	---	--

1928. Perf.

 <p>Green</p>	<p>300 r. Black</p>
---	-------------------------

1928-30. As 1920





<p>50 r. Violet</p>	<p>50 r. Claret</p>	 <p>Blue-green</p>
-------------------------	-------------------------	---

<p>200 r. Vermilion</p>	<p>200 r. Deep olive</p>	 <p>Red</p>	<p>400 r. Orange</p>	 <p>337</p>		<p>700 r. Violet</p>	<p>1000 r. Turquoise</p>
-----------------------------	------------------------------	---	--------------------------	---	---	--------------------------	------------------------------

1929-30. Air stamps. Perf.

 <p>467 468 469 Deep green</p>	 <p>470 Carmine</p>	 <p>471 Prussian blue</p>	 <p>472 Purple</p>	 <p>473 Red-brown</p>	 <p>479 Green</p>	 <p>480 Carmine</p>
---	--	--	---	--	--	--

1930. Various types. Perf.

 <p>481 Deep olive</p>	 <p>Violet</p>	<p>100 r. Emerald</p>	 <p>Deep olive</p>	
--	---	---------------------------	--	---

# BRAZIL—continued

1881. As 1928-30

1881. Perf.



(50 r.) Blue-green

Brown



200 r. + 100 r.  
Green

500 r. + 250 r.  
Purple

Various types



Green, red and yellow

Grey and red

Black, green, yellow and red

1931-32. Zeppelin stamps. Various stamps surcharged  
Air stamps of 1928-30

As 1928-30. Surcharged



Postage stamps of 1928

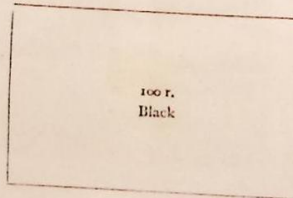


1932. Perf.

Various portraits



Purple



100 r.  
Black



Marone

Various designs



Blue



Carmine

Green

1932—continued



Purple

1933. Perf.

Stamp of  
1928-30. Surch.



Red



Blue, green and yellow



Red-brown



Red



Red



Maave



Red



Blue

1934. Perf.



Olive



Imperf.



Vermilion

BRAZIL—continued

1934. Perf.

1934—continued



Red



Brown

1935. Perf.



Orange



Yellow



Black



Blue



Brown and claret



200 r. + 100 r.  
Violet

Olive-brown

700 r. + 100 r.  
Blue

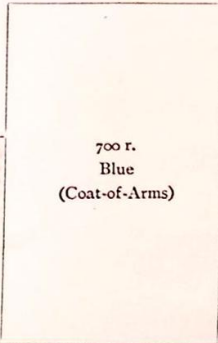
1935. Perf.



Violet and chocolate



Purple



700 r.  
Blue  
(Coat-of-Arms)



582

Blue

1938. Perf.



Green



Chocolate



Blue



589



594-595



593



BRAZIL—continued

Condor Air-mail



BREMEN

1855. Imperf. Black on coloured papers



Blue

Rose

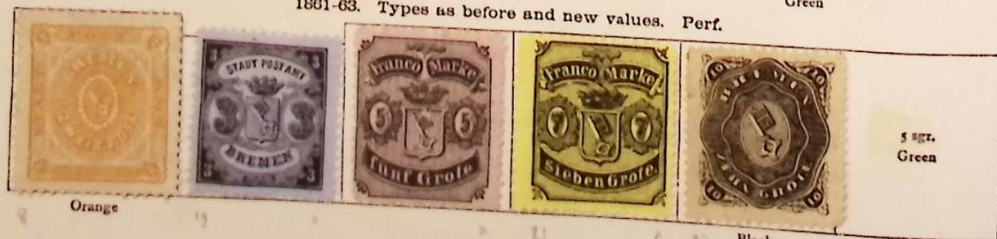
7 gr.  
Yellow

1861. Imperf.



Green

1861-63. Types as before and new values. Perf.



Orange

5 gr.  
Green

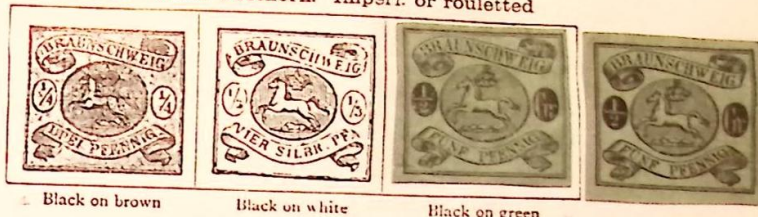
Black

# BRUNSWICK

1852. No wmk.



1853-62. Wmk. Posthorn. Imperf. or rouletted



1857. Imperf.



1852. As 1853. Rouletted



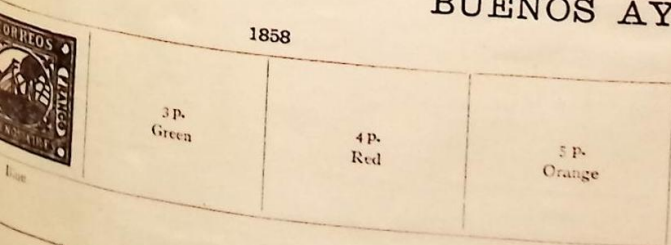
1855. No wmk. Rouletted



*Coined on 31st December 1867 - Joined the North German Confederation*

# BUENOS AYRES

1858

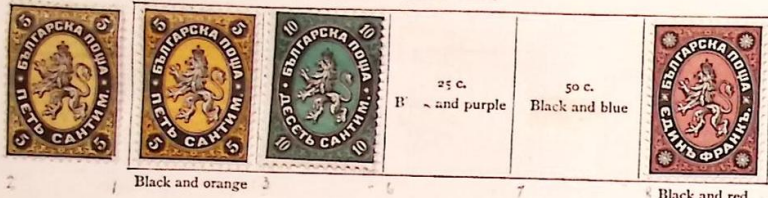


Plates altered to represent other values

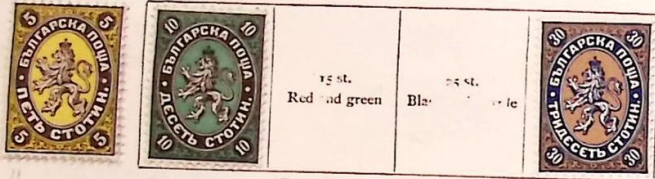


# BULGARIA

1879. Perf.



1881. Perf.



1882. Colours changed



1884. Surcharged



1885. Perf.



1886. Spelling altered



1889. Perf.



1892. Surcharged

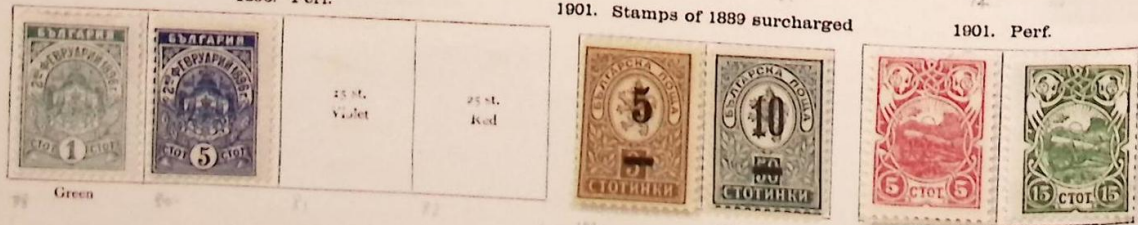
1895. Perf.



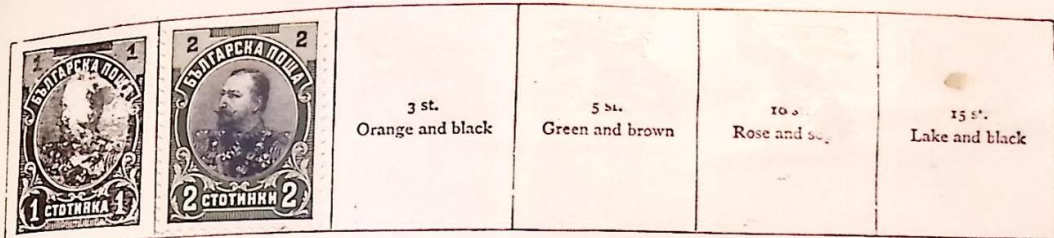
1896. Perf.

1901. Stamps of 1889 surcharged

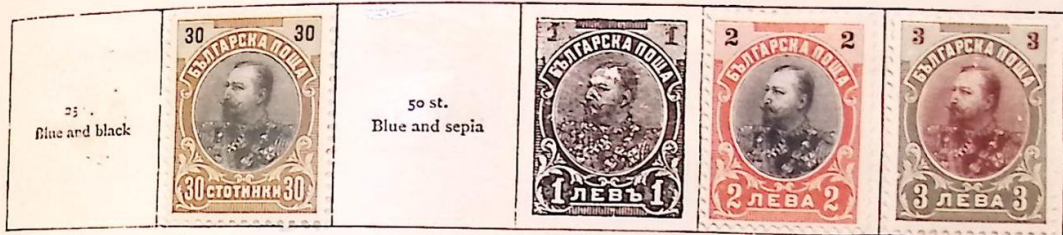
1901. Perf.



1902. Perf.



106 Purple and black



Red and green

1902. Commemorative. Perf.



Red

1903. Stamp of 1902 surcharged

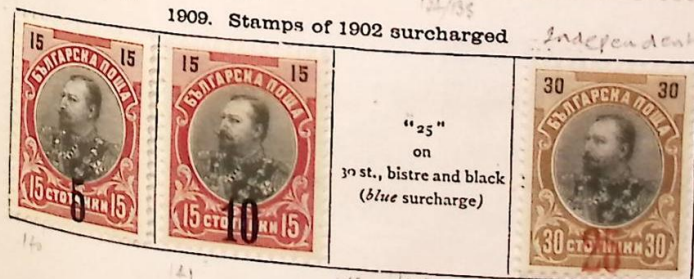


1907. Perf.



Green

1909. Stamps of 1902 surcharged

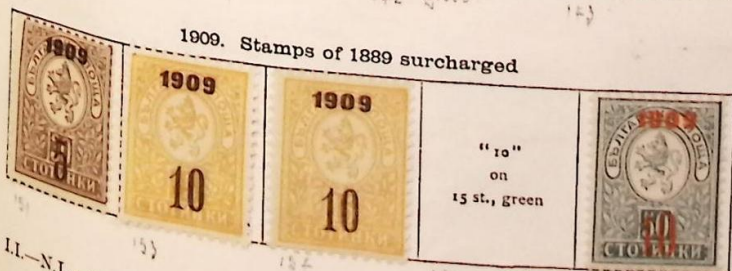


Independent Kingdom. Prince Ferdinand. Summer 1908.

1909. Stamps of 1889 overprinted 1909



1909. Stamps of 1889 surcharged



1910. As 1902. Surcharged in blue



On 3 st., black and orange

BULGARIA—continued

1911. Centres in first colour. Perf.



Myrtle-green    Black and carmine    Black and green    Black and red    Black and ultramarine    Brown



Black and lake    Bistre    Black and blue    Black and ochre

1912 Perf.



Greenish grey



Black and purple    Black and violet



185-1916  
Red Crest Head.

1913. Stamps of 1911 overprinted in red, blue, black, or green

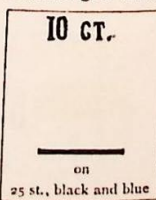


1915-16. Types of 1911. Colours changed



Slate    Chocolate and green    Olive    Black and deep blue    Brown and olive

1915  
Surcharged in red



190 v

1917. Perf.



Grey green    Slate    Blue    Orange    Violet    Claret

1918. Perf.



18 Grey

175 Green



196/9 Slate

1919. Perf.



121 Grey-green



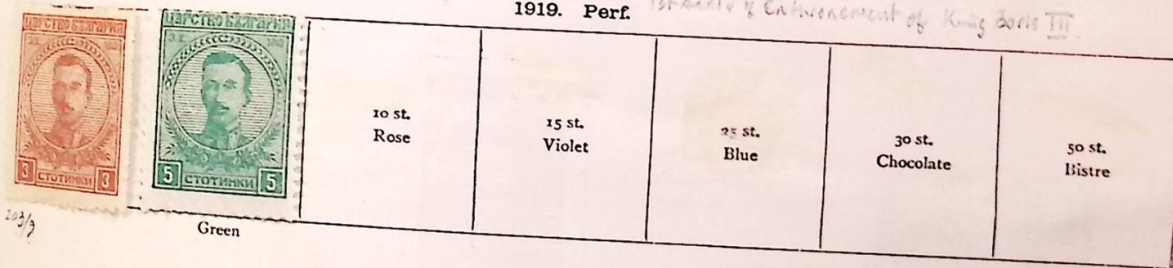
201/2 Black



191 Chestnut

1919. Perf.

*1st Series of Emplacement of King Boris III*



203/3 Green

10 st.  
Rose

15 st.  
Violet

25 st.  
Blue

30 st.  
Chocolate

50 st.  
Bistre

As last. Surcharged

*Prisoner of War Fund*



1920. Perf.

Types of 1917 and 1919. Surcharged



220/5 Carmine



Myrtle

BULGARIA—continued

1920—continued



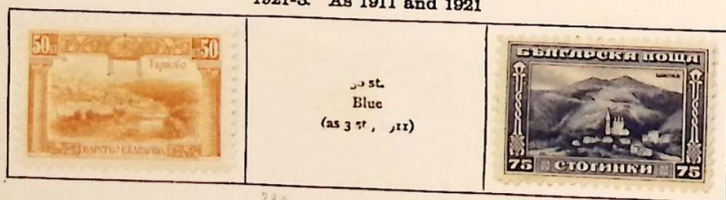
1921. Perf.



1921. Perf.



1921-3. As 1911 and 1921



1921. Perf.



1922. "Bourchier" issue. Perf.



Chestnut  
244/52

Slate



249 Olive

251

1924-25. Various types surcharged in red, black or blue



253

255

256

257

3  
ЛЕВА  
50 st., blue

1925-26. Perf.



Blue and carmine  
on rose

Chocolate on green

Green

266 Pale green

1925-29. Sunday Delivery stamps. Perf.



Green and buff

Lake and yellow

Black on green

268

269

BULGARIA—continued

1925-29—continued



r l.  
Pink

Green

1926. Perf.



Green



Black

1926-27. Centras embossed



Orange and sepia

1927-29. As 1881



1928. Perf.



Green



Violet

Purple

Carmine

Olive

Brown



Blue

Green

Olive-brown

Chestnut

Greenish blue

1927. Air stamps. Overprinted  in various colours



Lake and yellow

Orange and sepia

1930. Sunday Delivery stamps. Perf.



Green and purple

1930. Perf.



Green



Blue

1931. Air stamps. Perf.



Green

1931. Olympic Games stamps. Perf.



Green

Marone

Carmine

Blue-green

Orange

Deep blue

1931. Perf.



White



Slate

20 L.  
Chestnut and purple

BULGARIA—continued

1932. Air stamps. Perf.



12375 Green

1932. Olympic Games stamps of 1931. New colours



12372



1933. As 1931. New colours



12376



12377 Brown and claret

1934. Stamp as 1931. Surcharged in blue



12378

1934. As 1931. New value



12379

1934. Various designs. Perf.



12380 Green

12381

12382

12383 Carmine

12384

12385

As last. colours changed



12386

12387

Postage due stamps

Timbres taxe

1884/95

1886



1938  
 Trade Propaganda  
 SG 388/407

2 l.  
 braunkarmin

6 l.  
 braunviolett



Postage due stamps

Portomarken

Timbres tax

1884/95

1886

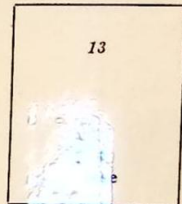


1895

49

50/2

1895



78

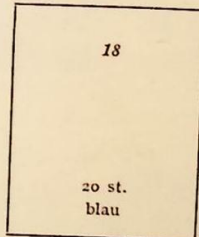
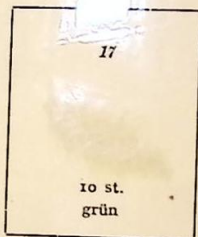
13

1896

1902/04

52

79



D 122/8

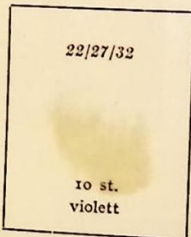
10 st.  
grün

18

20 st.  
blau

1915/22

D 93



22/27/32

10 st.  
violett

20

20

30

50

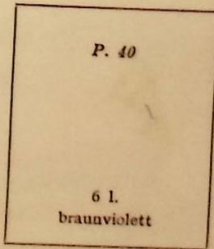
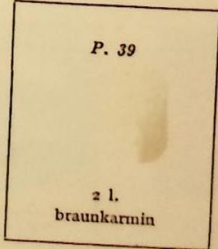


239/40

D 243/5

241

1932



P. 39

P. 40

2 l.  
braunkarmin

6 l.  
braunviolett

D 322

1933



D 330

# BULGARIA—continued

1935. Various designs all dated "1935." Perf.



Marone

Slate-blue

Red



Orange

Red

1935. Perf.



Chocolate

Orange-red

Brown-orange

Marone

Vermilion



Chocolate



Red and chocolate

1936. Perf.



Green

Marone



CAMEROONS (GERMAN)

1897. Stamps of Germany of 1889 overprinted "Kamerun." Perf.



1900. Perf.



Brown

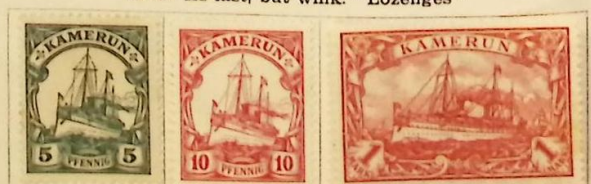


Forgery - not very good!



Red

1906. As last, but wmk. "Lozenges"



# CAMEROONS (FRENCH)

## Corps Expéditionnaire

### 1915. Stamps of Gaboon overprinted Franco-Anglais CAMEROUN



### 1916. Stamps of French Congo and Middle Congo overprinted



Olive and brown

(2 c.) violet and brown



(20 c.) green and red

(35 c.) chocolate and blue

# CAMEROONS (FRENCH)—continued

1916—continued



(15 c.) olive and grey



Drab and slate



Overprinted as below

## Stamps of Middle Congo overprinted



(1 c.) brown



Green and blue

## 1921. Stamps of Middle Congo overprinted CAMEROUN



# CAMEROONS (FRENCH)—continued

1921—continued



1924-25. As last. Surcharged



1925-27. Perf.



48/37

49 Green and red on green



73

55

CAMEROONS (FRENCH)—continued

1925-27—continued



Black and yellow-green



Surcharged in red



Black and brown on azure

CAMEROONS (FRENCH)—continued

Postage Due 20.5.1925 SG D88/100



D 88/100

# CAMEROONS (FRENCH)—continued

1928-33. As last.



1931. International Colonial Exhibition. Overprinted "CAMEROUN" in black. Perf.



Green

Mauve

Vermilion

Blue



Set 884+ Complete.



## CANTON

(FOR CORRESPONDENCE POSTED AT THE FRENCH POST OFFICES)

1901. Stamps of Indo-China overprinted **CANTON** 州廣 in red. Perf.



Black on azure

# CANTON—continued

1901—continued



1903-4. Overprinted in black. Chinese characters various



## CANTON

1906. Overprinted Chinese characters various

花銀八厘

Stamps as 1901

Perf.

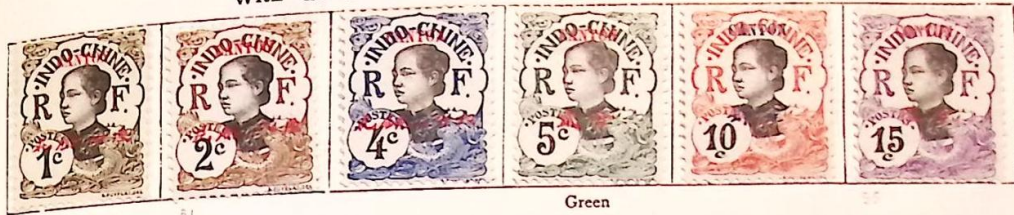


Claret on yellow



# CANTON—continued

1908. Centre and value in black. Perf. Overprinted in red or blue  
 With CANTON and Chinese characters (various) below



Green



Violet

With CANTON and Chinese characters (various) above



Orange (in blue)

Lake (in blue)

Green

Blue

Violet

1918. Stamps of 1908. Surcharged in black or blue



76c 4 with closed top



# CAPE JUBY

1916 Stamps of Rio de Oro, 1914, surcharged in violet, red, or green



1919. Stamps of Spain overprinted in red or blue

CAPE JUBY



Green



1922. Overprinted as last



Green

1928. "Red Cross" stamps of Spain overprinted in black or violet

1925. Overprinted as stamps of 1919



Green



4 Specimen



4 Specimen



4 p.  
Bistre

10 p.  
Violet



4 Specimen

1929. "Exhibition" stamps of Spain overprinted CABO JUBY in blue or red



1934. Stamps of Spanish Morocco overprinted Cabo Juby in red or black  
Issue of 1928



Issue of 1933-35



# CAPE JUBY—continued

1935. Stamps of the same issue overprinted CABO JUBY in various colours



56-65 No. Blackish Green (1936)  
to complete set.



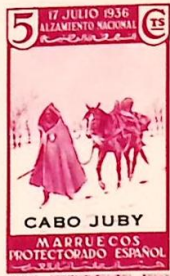
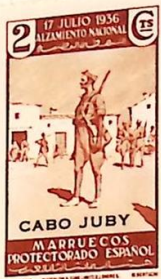
38/104 (1st June 38)



1203

1938 incorporated into Spanish Sahara

1st Anniversary of Civil war 17th July '37.



# 25

Black



1893. Perf.



Brown

Orange

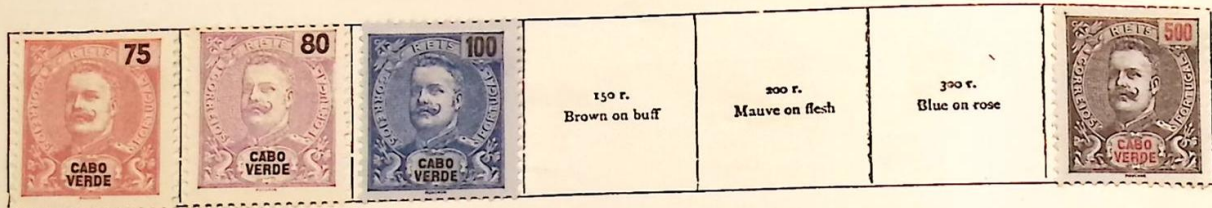
50 r. Blue



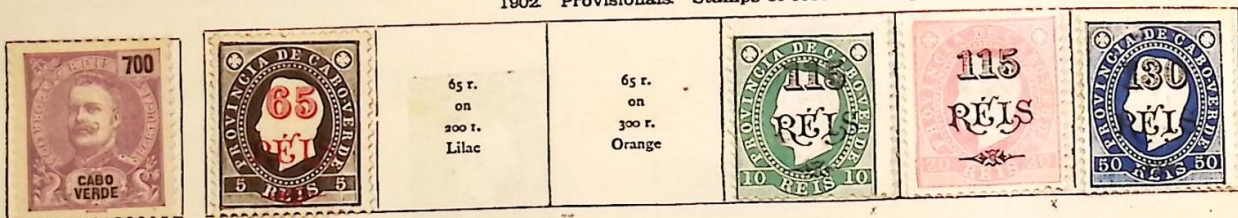
200 r. Blue on blue

# CAPE VERD ISLANDS—continued

1898. Perf.



1902 Provisionals. Stamps of 1886 surcharged



Stamps of 1883 surcharged



Stamps of 1883 overprinted **PROVISORIO**



# CAPE VERD ISLANDS—continued

1903. As 1898 issue. Perf.



1905. As last, surcharged



REPUBLIC. Oct., 1910

1911. As 1903 overprinted in red (in green on 25 r.)



1912. Overprinted as last, in red (in green on 20 r.)



# CAPE VERD ISLANDS—continued

## REPUBLICA

1913. Surcharged CABO VERDE in black. (I.) On issue for Portuguese Africa

$\frac{1}{4}$  C.



$\frac{1}{4}$  c. on 2½ r., green

$\frac{1}{4}$  c. on 5 r., vermilion

1 c. on 10 r., purple



2½ c. on 25 r., green

5 c. on 50 r., blue

7½ c. on 75 r., chocolate

(ii.) On similar issue for Macau



10 c. on 100 r., brown

15 c. on 150 r., ochre



(iii.) On similar issue for Timor



1914. Name and value in black. Perf.



As last—continued

Provisionals of 1902 overprinted  
REPUBLICA in violet, red, or green



1921. Surcharged  
On stamps of 1913

On stamps of 1898



War Tax stamps of Portuguese Africa, 1918, surcharged



1922. Provisionals of 1914 surcharged

1922. As 1914



CAPE VERD ISLANDS—continued

1925. "Pombal" Commemoratives inscribed "CABO VERDE"

1922—continued



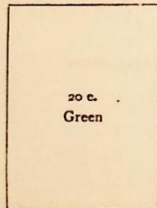
Provisionals of 1902 surcharged



1928 As 1914



1931. As 1922. Surcharged



1934. Perf.



Brown



1904



1925 postage due  
D.226 3.



Brown

1920. Stamps of Austrian Republic, 1919-20, overprinted

Abstimmung

Perf.



Imperf.



Journal stamp of Jugo Slavia surcharged with "K.G.C.A." and new value in various types in red



"45 p." on 2 b., grey

CAROLINE ISLANDS

1899. Stamps of Germany overprinted



Brown

CAROLINE ISLANDS—continued

1900. Perf.



15071



Carmine

1913. Surcharged "5 Pf." in black



3 pf.  
Brown

CASTELROSSO

*Island of the coast of Asia Minor formerly part of the Turkish Empire.*

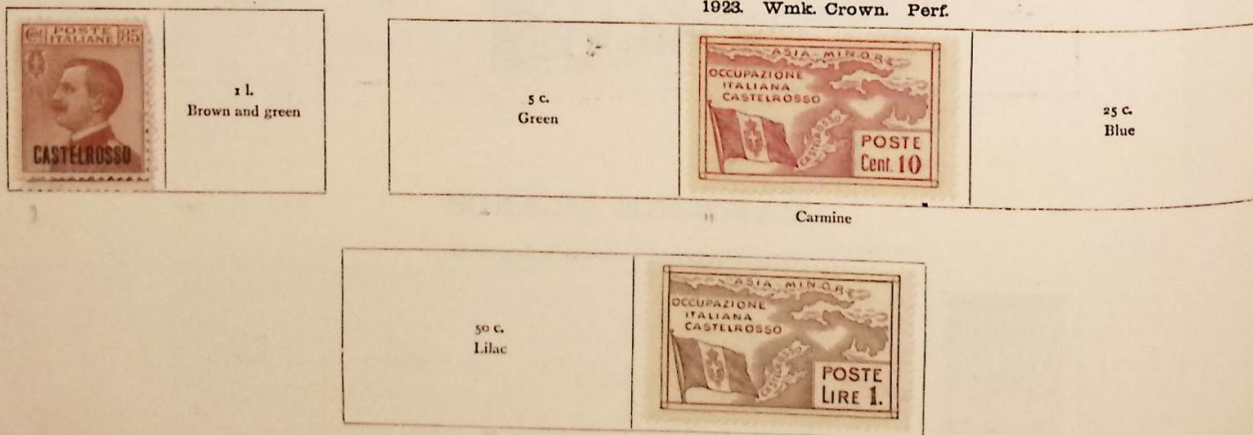
*(Aegean Is. see Francfort 1915/21 1921/22 Italian Naval Admin. and the Dodecanese territory.)*

(ITALIAN OCCUPATION)

1922-24. Contemporary stamps of Italy overprinted "CASTELROSSO"



1923. Wmk. Crown. Perf.



1 l.  
Brown and green

5 c.  
Green

25 c.  
Blue

Carmine

50 c.  
Lilac

# CAUCA—continued

1903. Barbacoas Provisionals—continued  
 Black on coloured papers. Date and "Barbacoas" in MS.

No hay estampillas. Pagó \$1.00 El Admor. Corr. E. O. ORTIZ.	\$1.00 Blue	\$1.00 Red	\$1.00 Flesh	\$1.00 Orange	\$1.00 Pink	\$1.00 Yellowish white
---	----------------	---------------	-----------------	------------------	----------------	---------------------------

Buff

Black on various coloured papers as above. Value, date, and "Barbacoas" in MS. (red, violet, or black)

No hay estampillas. Pagó \$0.21 El Admor. E. O. ORTIZ	No hay estampillas. Pagó \$0.22 El Admor. E. O. ORTIZ	No hay estampillas. Pagó \$0.05 El Admor. E. O. ORTIZ	No hay estampillas. Pagó \$0.10 El Admor. E. O. ORTIZ	No hay estampillas. Pagó \$0.20 El Admor. E. O. ORTIZ
--	--	--	--	--

No hay estampillas. Pagó \$0.50 El Admor. Correos. E. O. ORTIZ.	No hay estampillas. Pagó \$1.00 El Admor. B. O. ORTIZ	No hay estampillas. Pagó \$5.00 El Admor. E. O. ORTIZ.
--	--	---



no longer issued. printed local issues, see note 56 A. 22 1910 page 381.



CASTELLOROSSO - now called Castellorosso  
 French besp. by navy on 27.12.1915 withdrawn in Aug 1921 and was occupied by the Italian



# CASTELROSSO—continued

1930. "Ferrucci" stamps of Italy overprinted CASTELROSSO



1932. "Garibaldi" stamps of Italy overprinted as last



*Castelrosso was transferred to Greece with the Dodecanese Islands by the Treaty of Paris 15th Sept 1917.*

## CAVALLE

*French P.O. in Turkey / Kavalla*

(FOR CORRESPONDENCE POSTED AT THE FRENCH POST OFFICES)

*closed Aug 1914 became a Greek town in 1913*

1893. Stamps of France overprinted in red, blue, or black

Surcharged in addition

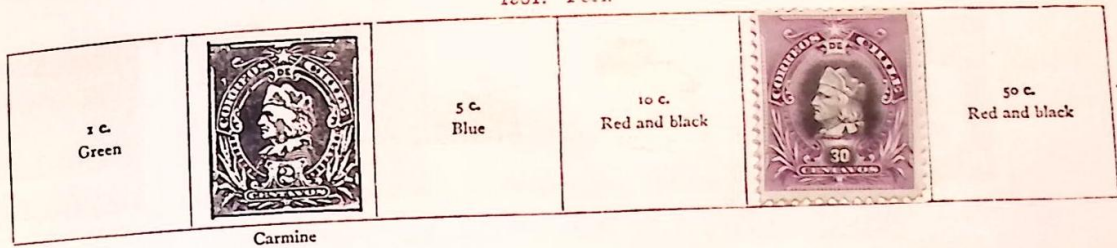


1912. Colour changed



*461  
green  
1912  
486*

1900. Stamp of 1881  
surcharged

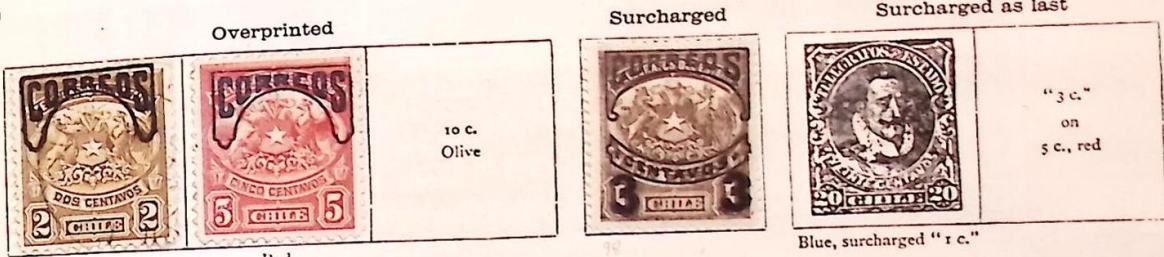


Carmine

1901. Perf.

1901. Telegraph stamps used for postage. Perf.

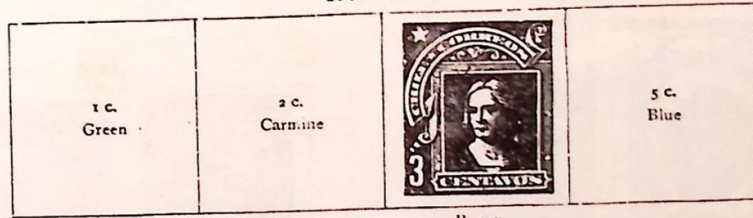
1903. Stamp of 1900  
surcharged



Red

Blue, surcharged "1 c."

1905. Perf.



Brown

Centre in black



Orange

Bronze

1910. As last, overprinted and surcharged in blue or red



1910. Centres in black. Perf.



Deep green

Rose-lake

Chestnut

Dull blue

CHILE—continued

1910—continued



Brown

Red

Slate

Orange



Mauve

Olive-green

Green

Yellow

Red



Green

Purple

1911. Centres in first colour. Perf.



Green

Scarlet

Sepia

Blue

Centres in black



Grey

Rose

Purple

Brown

Blue

Bistre

Myrtle



Emerald

Red

Green

Yellow

Colours and types changed and new values

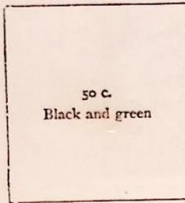


(type as 3c)

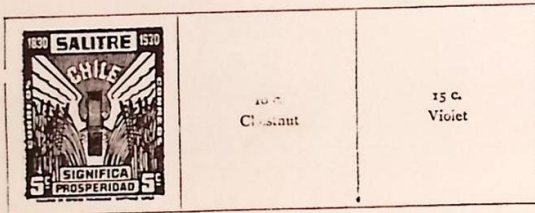
# CHILE—continued

1928-29—continued

Air stamps. Stamps with new inscription overprinted as before



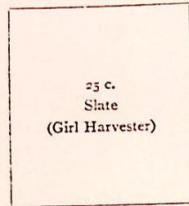
1930. Perf.



Green

5 c.  
Chestnut

5 c.  
Violet



Blue

1931. Air stamps. Perf.



Green



Sepia

1931-34. Perf.



Red



Blue

Brown

Magenta

Magenta

1934-36. Air stamps. Various designs showing aircraft. Perf.



Blue



216

60 c.  
Black



70 c.  
Blue

80 c.  
Olive-black

2 p.  
Slate

4 p.  
Red-brown

Blue

1934-36—continued

	<p>6 p. Yellow-brown</p>	<p>8 p. Green</p>		<p>20 p. Deep brown</p>	<p>30 p. Grey</p>
--	------------------------------	-----------------------	--	-----------------------------	-----------------------

Claret

Orange-red

1936. Various designs. Perf.

	<p>50 p. Purple</p>			
--	-------------------------	--	--	--

--	--	--	--	--

--	--	--	--

Sepia

Purple

--	--	--	--

P103

P22

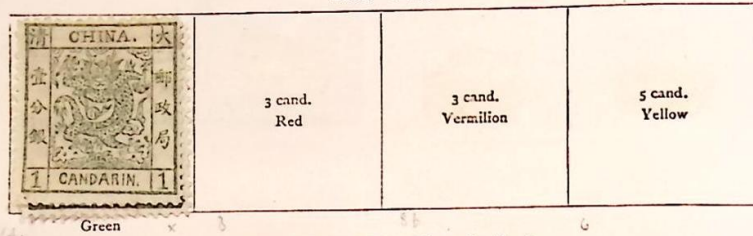
AR 77

PT 74

PT 76

CHINA

1878 Perf.



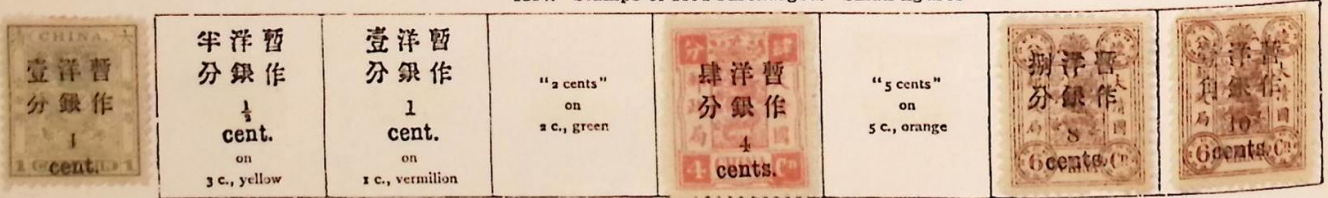
1885. Wmk. "Ying-Yang." Perf.



1894. Same wmk. Perf.



1897. Stamps of 1894 surcharged. Small figures




Large figures



1897—continued

 肆洋暫作 分銀作 4 cents.	 伍洋暫作 分銀作 5 cents.	"8 cents" on 6 c., brown	 壹洋暫作 角銀作 10 cents.	 壹洋暫作 角銀作 10 cents.	"30 cents" on 24 c., red
--	---	--------------------------------	--	---	--------------------------------

1897. The "3 cents, red," Revenue stamp surcharged. Perf.

	政郵清大 貳洋暫作 分銀作 2 cents.	政郵清大 貳洋暫作 分銀作 2 cents.	政郵清大 肆洋暫作 分銀作 4 cents.	政郵清大 肆洋暫作 分銀作 4 cents.	政郵清大 壹洋 1 dollar.	"5 dollars" on 3 c., red
---	------------------------------------	------------------------------------	------------------------------------	------------------------------------	----------------------------	--------------------------------

1897. Wmk. "Ying-Yang." Perf. Japanese plates

					4 c. Bistre	
--	---	---	---	---	----------------	---





Marone

Yellow

Orange

Brown

Rose

			50 c. Green		2 dol. Orange and yellow	5 dol. Green and pink
---	--	--	----------------	--	-----------------------------	--------------------------

Green

Chocolate


Carmine and rose

1898. Wmk. or no wmk. Perf. London plates



				5 c. Salmon	5 c. Yellow	5 c. Violet
--	---	---	---	----------------	----------------	----------------

Brown

10 c. Green
----------------

16 c. Olive		30 c. Red	50 c. Green
----------------	---	--------------	----------------

Marone

	2 dol. Red and yellow	
---	--------------------------	---

Carmine and rose

# CHINA—continued

1908-10. As 1898. No wmk.

2 c. Green	3 c. Green	4 c. Scarlet	5 c. Violet	6 c. Lake	7 c. Blue
---------------	---------------	-----------------	----------------	--------------	--------------



1657 Green and orange

## REPUBLICAN PROVISIONALS 1912 Stamps of 1898 overprinted

立中時陸 in red on 3 c., green	in black on \$1, red and flesh	in black on \$2, claret and yellow	in black on \$5, myrtle and salmon
-------------------------------------	--------------------------------------	--	--

172/3

Overprinted in red

中華 立中時陸 民國 1 c., orange	3 c. Green	16 c. Olive-green	50 c. Green
----------------------------------	---------------	----------------------	----------------

Overprinted in black

\$1 Red and flesh	\$2 Scarlet and yellow	\$5 Myrtle and salmon
----------------------	---------------------------	--------------------------


Overprinted in red, black, or blue (Republic of China)

1 c. Brown		2 c. Green		4 c. Scarlet	5 c. Lilac	7 c. Lake
---------------	---	---------------	---	-----------------	---------------	--------------

28/92

1 c. Blue	16 c. Green	20 c. Marone	30 c. Vermillion	50 c. Green
--------------	----------------	-----------------	---------------------	----------------

235/193

	\$2 Claret and yellow	\$5 Myrtle and salmon
---	--------------------------	--------------------------

204

# CHINA—continued

## 1912. Commemorating the Revolution



Orange



\$2 Brown	\$5 Slate
--------------	--------------

## 1912. Commemorative issue. Perf. *(Pres. Yuan Shih-kai)*



Orange



3 c. Blue-green	5 c. Mauve	8 c. Sepia
--------------------	---------------	---------------



16 c. Olive-green	20 c. Marone	50 c. Green	\$1 Carmine
----------------------	-----------------	----------------	----------------

## 1913. Perf. *London Printing*

\$2 Brown	\$5 Slate
--------------	--------------



2 c. Yellow-green
----------------------




Orange

4 c. Red	5 c. Slate	10 c. Blue	10 c. Blue
-------------	---------------	---------------	---------------

CHINA—continued

As last—continued

	16 c. Olive	20 c. Lake	30 c. Purple	50 c. Green-blue
---	----------------	---------------	-----------------	---------------------

Brown

\$1 Black and yellow-brown	\$2 Black and blue		\$10 Black and green
-------------------------------	-----------------------	---	-------------------------

Black and red

1920. As 1913

1 1/2 c. Violet	13 c. Red-brown
--------------------	--------------------

1921. Same types surcharged in red or blue

壹分 附收 賑捐 1 Cts on 2 c., green		"5 c." on 6 c., grey
--	--	----------------------------

1921. Centres in black. Perf.

			
--	--	--	--

Green

1921. Perf.

				
--	---	---	--	---

Orange

1923. As 1913. New colours

4 c. Grey	4 c. Olive	6 c. Scarlet	15 c. Blue	50 c. Green	\$2 Brown and blue	\$10 Mauve and green	\$20 Blue and red
--------------	---------------	-----------------	---------------	----------------	-----------------------	-------------------------	----------------------

1923. Perf.

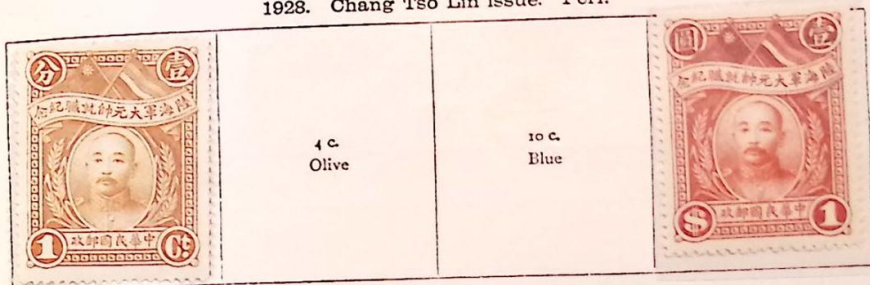


Orange

1925. Surcharged in red

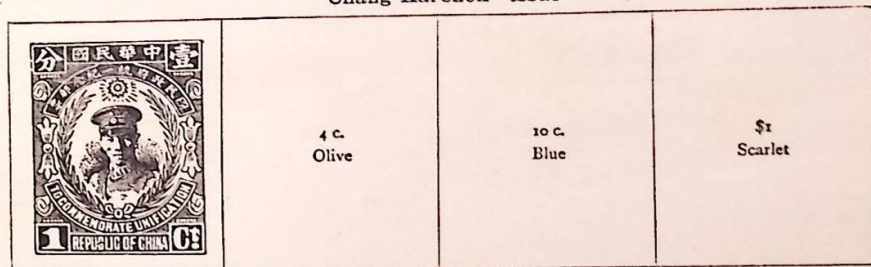


1928. Chang Tso Lin issue. Perf.



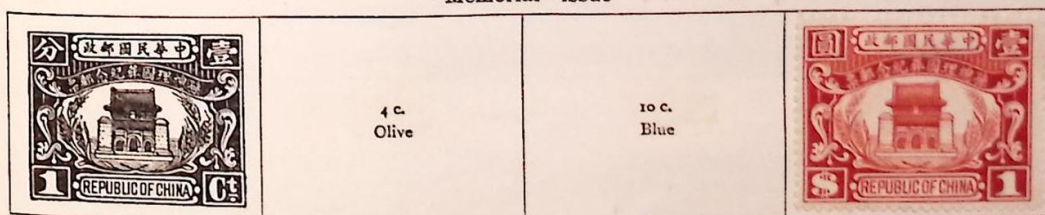
Orange

1929. Perf. "Chang Kai-shek" issue *Unification of China*



Orange

"Memorial" issue *State Burial of Dr. Sun Yat-sen*



Orange

Air stamps (redrawn type). As 1921, but with star instead of stripes on tail of aeroplane



CHINA—continued


1929—continued



1930-35. Surcharged as 1925  
in red or black

"1 c." 2 c., green	"1 c." on 3 c., blue-green	"1 c." on 1 c., grey
-----------------------	----------------------------------	----------------------------

1931-34. Dr. Sun Yat Sen issue. Perf.

1 c. Orange		4 c. Green	5 c. Yellow-green	15 c. Blue-green	15 c. Red	1 c. Ultramarine
----------------	---	---------------	----------------------	---------------------	--------------	---------------------

Olive-green

U. S.	\$1 Sepia and red-brown	\$2 Red-brown and blue	\$5 Black and red
-------	----------------------------	---------------------------	----------------------



1932. Perf.



Orange

1932-34. Martyrs' issue. Various portraits. Perf.



1 c.  
Orange

Sepia

2 1/2 c. Claret	3 c. Brown	Orange red	1 c.	13 c. Green	17 c. Bronze-green	20 c. Brown-lake
--------------------	---------------	------------	------	----------------	-----------------------	---------------------

1932-33. Air stamps. Perf.

39 c. Marine	49 c. Orange	59 c. Green
-----------------	-----------------	----------------



Green

1932-33—continued



557/247

1933. "Tan Yuan Chang" issue. Perf.



1933. As 1913. New colour



Olive

1936. Perf.



4447 Olive

Blue

Red



4470 (1936) 072

309 332 Second Peking Postings - redrawn



13438

# CHINA (French Post Offices in)

(FOR CORRESPONDENCE POSTED AT FRENCH POST OFFICES)

Stamps for above purposes were issued under the authority of the French Foreign Office (for Peking, Shanghai, and Tien-Tsin), or by direction of the Government of French Indo-China for the other towns and ports in China. The stamps listed here are those supplied to offices not furnished with special issues (see Canton, etc.).

## 1894. Stamps of France overprinted in black or red. Perf.



Green



High valued  
see NOTE in Cat.

Not issued.

## Surcharged in addition

1900

1901



"2 c." on 25 c., black on rose	"4 c." on 25 c., black on rose	"6 c." on 25 c., black on rose	16 Cents on 25 c., black on rose
--------------------------------------	--------------------------------------	--------------------------------------	--



## 1902. Perf.



Green

Carmine



Red and blue

## Surcharged



1902-5. Stamps of Indo-China surcharged

CHINE

Perf. Chinese characters, various

仙二



Black on azure



1905. Similarly surcharged



Claret on yellow



1907. Stamps of 1902 surcharged



# CHINA (French Post Offices in)—continued

As last, surcharged in black



"20 c."  
on  
50 c., blue



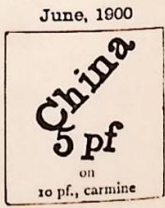
1922. As 1907. Surcharged



# CHINA (German Post Offices in)

(FOR CORRESPONDENCE POSTED AT GERMAN POST OFFICES)

Stamps of the German Empire overprinted. Perf. 1897



1900. Overprint similar to 1897 issue

