

SAAR—continued

As 1921. Surcharged in black, blue, or red



1922. Similar types to 1921. Values in French currency



SAAR—continued

1923. Colours changed



1925. Perf.



192 Plum

1926. Perf.



Green

Brown

Red

Blue

1927. Perf.



Brown



Black-green

Red-brown



Lake



Red



17



18



19

Carminé



SAAR—continued

1927. Stamps of 1926 surcharged "1927-28"

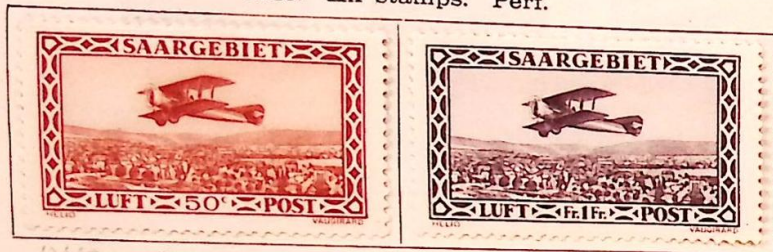
1927—continued



12.1

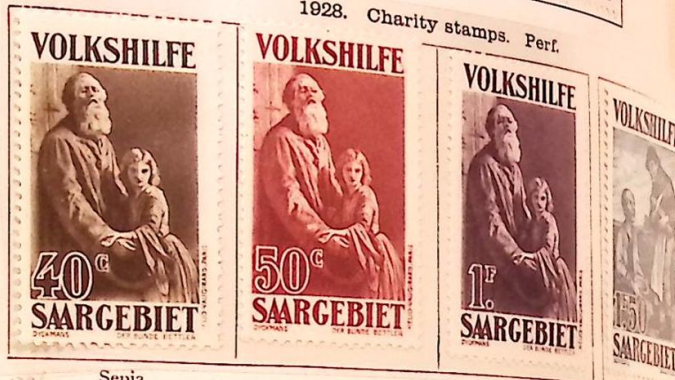


1928. Air stamps. Perf.



Brown-lake

1928. Charity stamps. Perf.



Sepia

1930. Charity stamps. Perf.



Brown-lake

Chocolate



Green

Surcharged

1920. As 1927. As 1927. New value



Sepia

1931. Charity stamps. Perf.



Chestnut



Lake

SAAR—continued

1931. Charity stamps. Perf.
Painting called "Charity"



Sepia

Red-brown

1932. Charity stamps. Various views. Perf.



Sepia

1932. Perf

As 1927. New value

Air stamps



Red-brown



(90 c.) Red



Vermilion



1933. Charity stamps. Perf.

1934. As 1927. Surcharged as 1930



Vermilion



1934. Charity stamps. Various designs showing statues. Perf.



Sepia

Red-brown

SAAR—continued

1934. Stamps of 1925-32. Overprinted VOLKSABSTIMMUNG 1935
Pfeilschie.



174/91



Air stamps of 1928 and 1932. Similarly overprinted



SAAR—continued

Charity stamps of 1934. Overprinted as last



1573 (bought at 1948 stamp show as a new issue 15.12.48)

SAAR returned to Germany 1.1.1949



0109/12

01112 Type II.

5024

STE. MARIE DE MADAGASCAR

Island of the East Coast of Madagascar from 1826 Madagascar's dependencies

1894. Perf. Name in red or blue



Black on azure



237

ST. PIERRE AND MIQUELON

1885-91. "Peace and Commerce." Imperf.



Olive-green

"Commerce." Perf. Surcharged as last

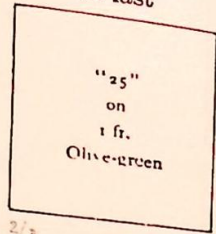


Brown on buff (with inverted "5")

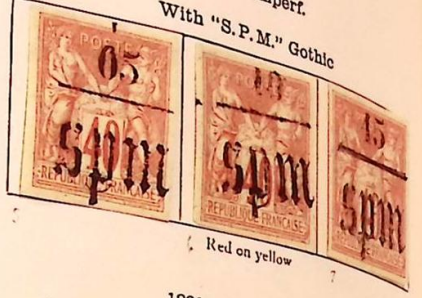
French Colonial stamps surcharged Figure with curved flag



Surcharged as last

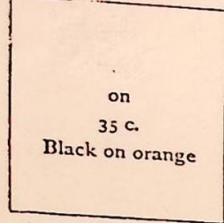


"Peace and Commerce." Imperf. With "S.P.M." Gothic



Red on yellow

"Peace and Commerce." Imperf.



on 35 c. Black on orange



Carmine



"Commerce." Perf.



Red on green

1891. "Commerce." Perf.



"15 c." on 35 c. Black on orange



Red on yellow

Small figures



Black on orange

1891-92. "Commerce" type overprinted "ST. PIERRE M on" in black. Perf.



25 c. Black on rose



35 c. Black on orange



In red



Overprinted in black and surcharged in addition



Green



1892. As 1891-92. Black overprint surcharged with large figure Double-lined figure



Thick solid figure



ST. PIERRE AND MIQUELON—continued

1892. French Colonial Postage Due stamps overprinted. Imperf.
In red



Black

In black



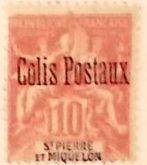
1892. Perf. Name in red or blue



Black on azure



1900. As last, colours changed and new values



1909. Perf.



Brown and red



Blue



SAINT-PIERRE & MIQUELON—continued
1909—continued



Blue and green

1912. Stamps of 1892 surcharged in black or red



1915. Stamps of 1909 surcharged +5c in red



1917. As 1909



1922. As 1909



1924-27. As 1909. Surcharged in blue or black



ST. PIERRE AND MIQUELON—continued

1001

1924-27—continued



1926-28. As 1909. Colours changed



1931. Colonial Exhibition stamps. As Cameroons but overprinted "ST. PIERRE ET MIQUELON"

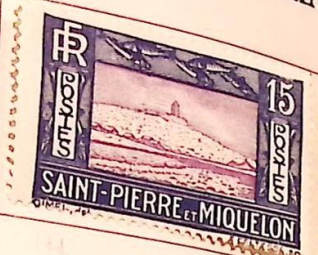


1932. Perf.



Vermilion and black

SAINT-PIERRE ET MIQUELON—continued



Blue-green and black



Green and olive



1933. As last. New values

1934. As 1932-33. Overprinted



continued

ST. THOMAS AND PRINCE ISLANDS

1003

1900 Post

163/71 932
Aland



SG. D202/17 1938
A+ Antic. Codi.



2-33. Overprinted



23 100 Gen. 34



013645
(1925)

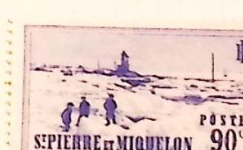


174 (1928) 100 Gen. 34

continued

ST. THOMAS AND PRINCE ISLANDS

1003



17th November 1938 SG 175/267

- 1. Dog team
- 2. St Pierre harbour
- 3. Point aux Canons Lighthouse (wrongly inscribed "Pointe de la Tortue")
- 4. Soldiers Cove, Langlade



Not above 10f inscription

ST. THOMAS AND PRINCE ISLANDS

1003

1839. Perf.



Black



1831. Colours changed

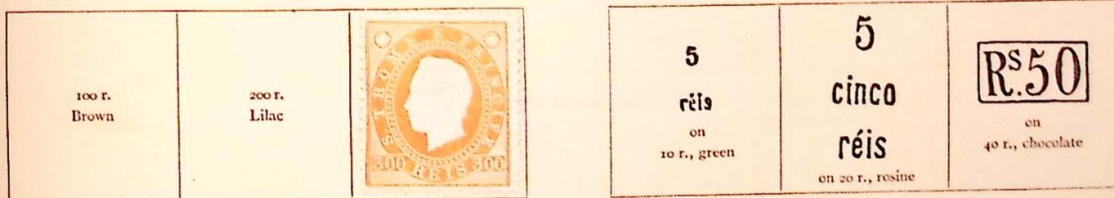


1837. Perf.



Black

1839. As last. Surcharged



1893. Perf.



Brown

Orange

ST. THOMAS AND PRINCE ISLANDS—continued

1893—continued



1898. Perf. Name and value in black



Chocolate



Name, etc., in red

Stamps of 1869

1902. Provisionals. Various issues surcharged

Stamps of 1887



"400 r."
on
10 r., orange

65
RELS
on 20 r., rosine

"65 r."
on
25 r., purple

"65 r."
on
100 r., brown



"115 r."
on
300 r., orange

"130 r."
on
5 r., black
(red)

"130 r."
on
200 r., lilac

"400 r."
on
40 r., chocolate

"400 r."
on
50 r., blue

Stamps of 1893

"65 r."
on
5 r., orange

"65 r."
on
10 r., mauve

"65 r."
on
15 r., chocolate

"65 r."
on
20 r., lavender

"115 r."
on
25 r., green



"115 r."
on
200 r., blue on blue

"130 r."
on
75 r., rose

"130 r."
on
100 r., brown on buff

"130 r."
on
300 r., blue on brown

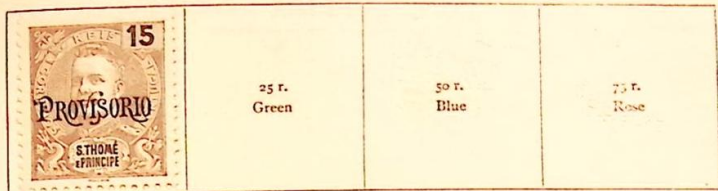


ST. THOMAS AND PRINCE ISLANDS—continued

1005

1902—continued. Stamps of 1898 overprinted **PROVISORIO**

1903. As 1898. Colours changed and new values

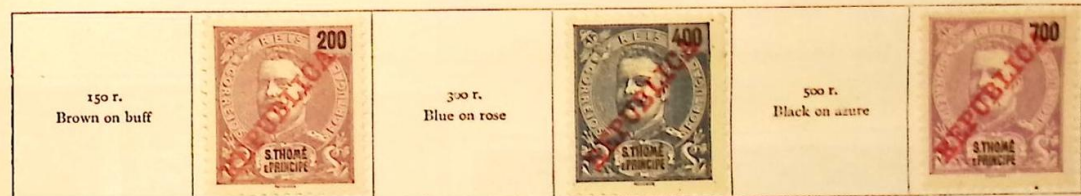


S. TH

1905. Surcharged



REPUBLIC, Oct., 1910
1911. As 1898, overprinted in red



1912. Similarly overprinted



Black

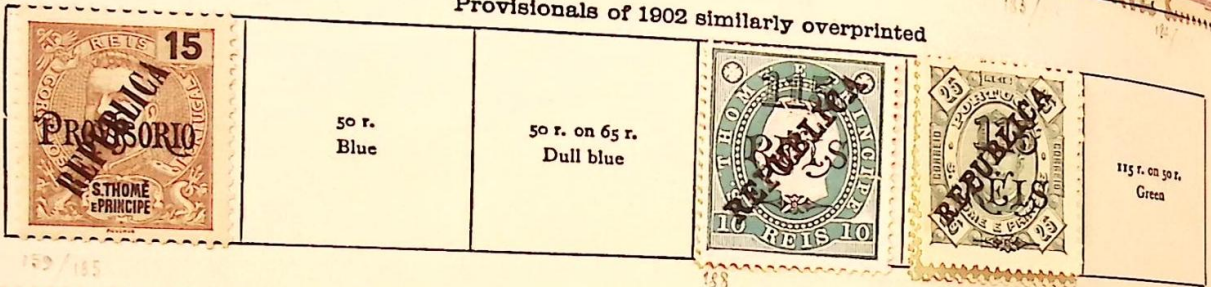


ST. THOMAS AND PRINCE ISLANDS—continued

1913. Stamps of 1898 and 1903 overprinted **REPUBLICA** or **REPUBLICA** in black



Provisionals of 1902 similarly overprinted



REPUBLICA

1913. Surcharged **S.TOMÉ E PRINCIPE** in black. (I) On issue for Portuguese Africa

$\frac{1}{4}$ c. c.



$\frac{1}{4}$ c. on 2 1/2 r., green 1 c. on 5 r., vermillion 1 c. on 10 r., purple 2 1/2 c. on 25 r., green 5 c. on 50 r., blue 7 1/2 c. on 75 r., blue

(II) On similar issue for Macau



10 c. on 100 r., brown 15 c. on 150 r., ochre 1 c.

ST. THOMAS AND PRINCE ISLANDS—continued

1007

1913—continued



(III.) On similar issue for Timor



1914. Name and value in black. Perf.



Olive



1915. Provisionals of 1902-5 overprinted "REPUBLICA" as in 1911



ST THOMAS AND PRINCE ISLANDS—continued

1915—continued



Stamp of 1902 (optd. "Provisorio")



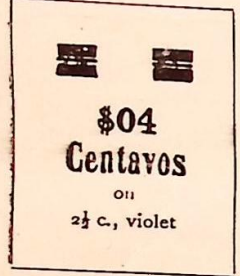
1919. Various issues surcharged



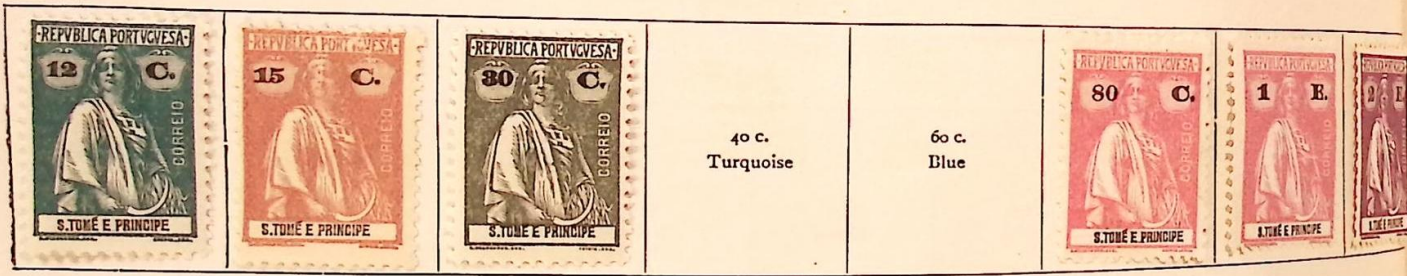
Stamps of 1914



1919. Surcharged



1922. As 1914



1923. As 1915. Surcharged in blue or red



1925. "Pombal" Commemoratives inscribed "S. TOMÉ E PRINCEPE"



Provisionals of 1902 Surcharged



ST. THOMAS AND PRINCE ISLANDS—continued

1009

1923. As 1914

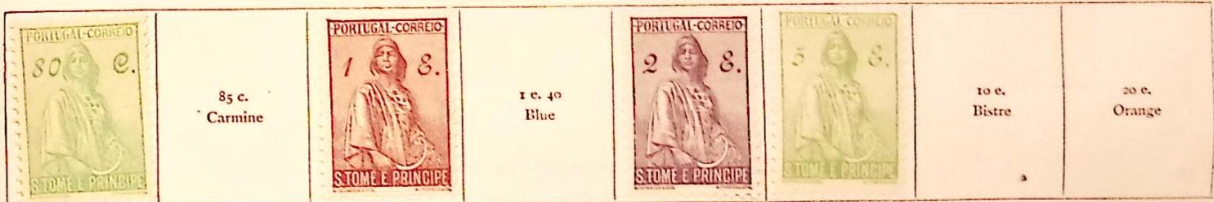


1931. Ceres type. Surcharged

1934. Perf.



Brown



2313/21 (1921)

170

Col. EL SALVADOR



1867. Perf.

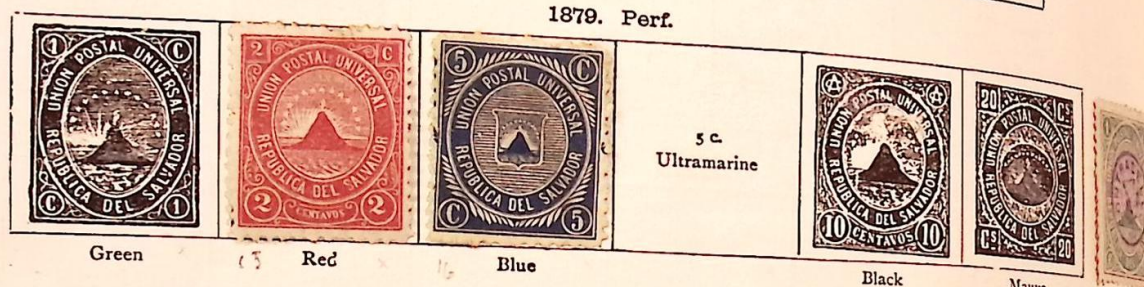


1874. Overprinted "CONTRA SELLO 1874" within a circle (two types)

2 r.
Green

1 c.
Brown

Red



1879. Perf.

5 c.
Ultramarine

Green

Red

Blue

Black

Mauve

1887. Perf. or rouletted

1889. Provisionals surcharged

1889. Perf.



Not issued, without bar.

18

Brown

Blue

Orange

Green

Nov., 1889. Various issues handstamped 1889.



Stamps of 1879

Stamps of 1887

1 c.
Green

2 c.
Red

20 c.
Mauve

10 c.
Orange

Provisional of 1889

Later impressions of 3, 10 & 15

26 Ba

27 B

1896/1898 Seebeck issues - reprints - from

52-30/309 D

1890. Perf.



Green

Seebeck stamps not in the book. Stamps cancelled with red ink to D 300 apart from the last surcharged.

SALVADOR—continued

1890—continued



1891. Perf.



Vermilion

Surcharged



1892. Perf.



Green

Surcharged



1893. Perf.



Violet



Surcharged

1894. Perf.



Green

Violet

Vermilion

Chestnut

Chocolate

SALVADOR—continued

1894—continued



Blue



Carmine



Brown



1895. Perf. Arms overprinted in various colours



Sepia



Green



Brown



Blue



Orange



Claret



Scarlet



Yellow



Purple



Indigo



Carmine



Olive-black



Sepia

Green

1895 (second issue). Perf.



Brown



Blue



Orange



Rose



Vermilion



Violet

Surcharged in red



Blue



Carmine



Black



3 c.
on
30 c. blue

SALVADOR—continued

1013

In black



1896. Perf.



Brown



1896. Perf.



Green

Lake

Coat of arms

Mountain

Brown

Ship

Green



Rose

Violet

Green

Orange

Blue

Violet

Surcharged

1897. As 1896. Colours changed



As last, surcharged



TRECE centavos

on 24 c., yellow (red)

TRECE centavos

TRECE centavos

"13 c." on 100 c., brown-lake

Perf.



Blue, rose, etc.

173 g

174 g

SALVADOR—continued



Vermilion


1898. Perf.



Overprinted in black, violet, or red

Blue-green

End of Seebach reprints!

1899. As 1898, overprinted with small Wheel  in black

1 c. Vermilion	2 c. Rose	3 c. Green	5 c. Blue-green	10 c. Blue	12 c. Purple	13 c. Brown-lake
-------------------	--------------	---------------	--------------------	---------------	-----------------	---------------------

1899. Perf. Overprinted with Wheel, as last, in black or blue



Brown (wheel black)



1900. Stamps of 1898 overprinted "1900"
Tall figures Small figures



1900
on
1 c., vermillion

"1 c."
on
10 c., blue

"1 c."
on
13 c., brown-lake

"2 c."
on
12 c., purple

"2 c."
on
13 c., brown-lake

Stamps of 1898 surcharged. "Centavo" in singular

Similarly surcharged, but "Centavos" in plural

SALVADOR—continued

1015

1900—continued



Stamps of 1899, with Wheel, similarly surcharged. "Centavo" in singular

	"1 c." on 13 c., carmine	"2 c." on 12 c., green		"3 c." on 12 c., green	"5 c." on 24 c., pale blue	"5 c." on 26 c., rose
---	--------------------------------	------------------------------	---	------------------------------	----------------------------------	-----------------------------

1900-1. Stamps as 1899 (Woman) without Wheel and dated "1900" overprinted with shield in violet or black

	1 c. Green	2 c. Rose	3 c. Black	5 c. Blue	10 c. Blue	12 c. Green	
---	---------------	--------------	---------------	--------------	---------------	----------------	---

1902. As last, surcharged

		50 c. Rose	1 centavo on 2 c., rose	"1 c." on 3 c., black	"1 c." on 5 c., blue
---	---	---------------	--------------------------------------	-----------------------------	----------------------------

1903. Perf.

1 c. Green			5 c. Blue	10 c. Purple	12 c. Slate	13 c. * Chocolate
---------------	---	---	--------------	-----------------	----------------	----------------------

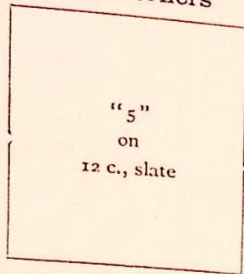
1905. As last, surcharged in black, blue, or red

24 c. Scarlet	26 c. Brown			1 1 1 CENTAVO 1 on 2 c., carmine		
------------------	----------------	---	---	---	---	---

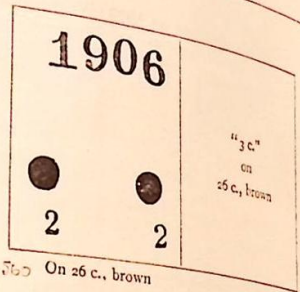
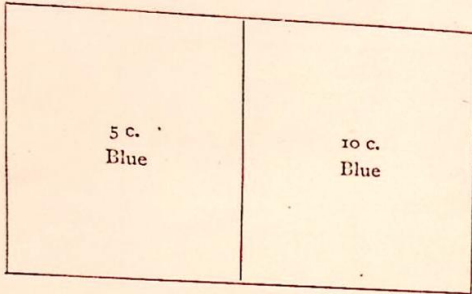
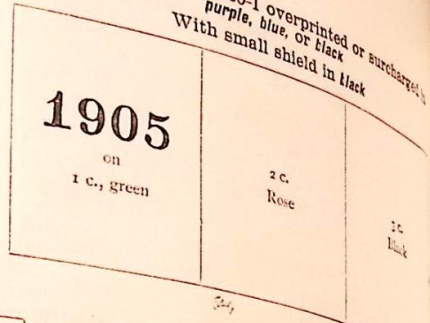
"1 c." on 13 c., chocolate	"6 c." on 12 c., slate	"6 c." on 13 c., chocolate				
----------------------------------	------------------------------	----------------------------------	---	--	---	---

SALVADOR—continued

1905—continued
As last, but figures
in all corners



1905-6. Stamps of 1900-1 overprinted or surcharged
purple, blue, or black
With small shield in black

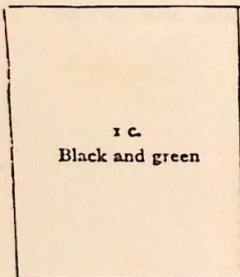


1906. Centre in black. Perf.

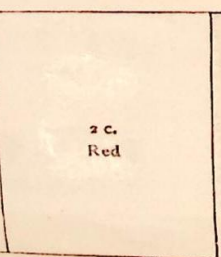


As last, overprinted with small shield in black
With surcharge in addition

No surcharge



1907. Centre and label in black. Perf.



SALVADOR—continued

1017

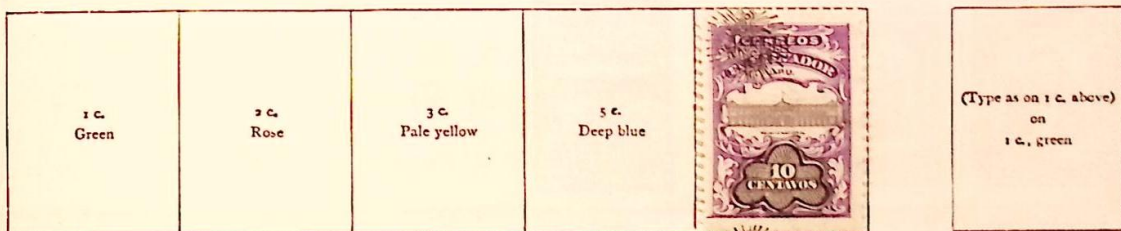
1907—continued



1908-9. Stamps as above surcharged or overprinted



1909-10. As 1907, but wmk. "Circles." Perf.



1910. Head in black. Wmk. as last. Perf.



Brown



As 1907. Without shield. Single colours

1911. Centres in brown. Perf.



Blue

Orange

Purple

6357 A
1573

1911—continued



SALVADOR—continued

1912. Centres in first colour. Perf.



Black and blue

Black and brown

Black and scarlet

Black and green



Black and olive

Grey and purple

Grey and scarlet

Grey and orange

Grey and blue

Grey and black

1914. Perf.



Brown and orange

Brown and violet

1915. Type as 1907. No shield. Overprinted "1915" in black

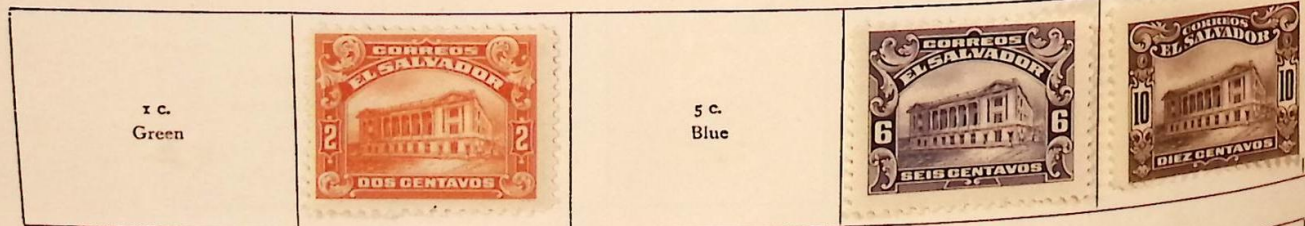


Green



100 c.
Brown

1916. Perf.



1 c.
Green



5 c.
Blue

Vermilion

SALVADOR—continued





1019

1918. Official stamps of 1915 overprinted

<p>CORRIENTE</p>  <p>1 c., green</p>	<p>2 c. Red</p>	<p>5 c. Ultramarine</p>	<p>6 c. Blue</p>	<p>10 c. Yellow</p>	<p>12 c. Red-brown</p>	
--	---------------------	-----------------------------	----------------------	-------------------------	----------------------------	---

Official stamps of 1916 surcharged or overprinted in red

Stamps of 1916 surcharged
In red In black

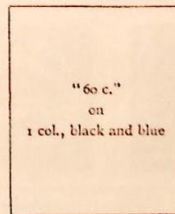
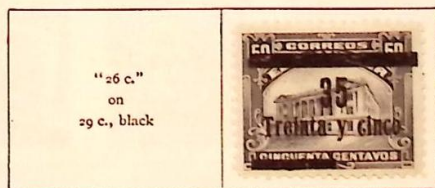
 <p>Un Centavo on 6 c., violet</p>	 <p>Un Centavo on 6 c., violet</p>	<p>5 c. Blue</p>	<p>6 c. Violet</p>	 <p>1 CENTAVO on 6 c., violet</p>	 <p>1 CENTAVO on 6 c., violet</p>
---	---	----------------------	------------------------	--	--

1919. Stamps of 1916 variously surcharged in black or red

<p>"1 c." on 12 c., purple</p>	<p>1 1 Centavo on 17 c., orange</p>	<p>"2 c." on 10 c., sepia</p>	<p>VALE 5 Centavos on 50 c., slate</p>	<p>6 SEIS on 25 c., brown</p>	<p>15 on 29 c., black</p>
--	---	---------------------------------------	--	---	-----------------------------------

1919. Perf.

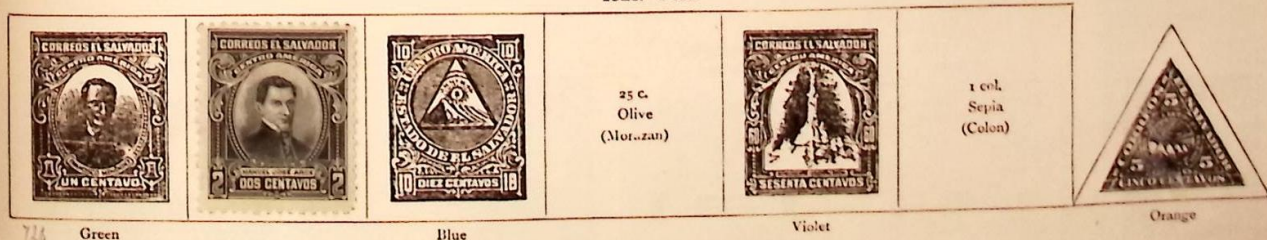
As last. Surcharged



1919. Municipal stamps surcharged



1921. Perf.



1923. Perf.



Blue

6 c., carmine
(as 20 c. on 6 c.)

5 20

on
6 c., carmine

on
6 c., carmine

1924. As 1921. Variously surcharged in black or red



On 5 c., orange



On 5 c., orange



6 6 6
Centavos
on
10 c., blue

"20 c."
on
25 c., olive

"20 c."
on
1 col., sepia

Surcharged in red



749

1924-25. Perf.



Purple



Red



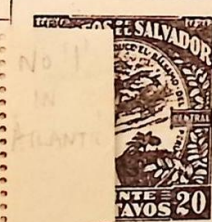
Black



Blue



Orange



Green



Green and rose



Red-brown

1925. Perf.

Surcharged in red



760

1 c.
Blue



Green

3 c.
Red

1926. Perf.



Blue and green

1928. As 1924-25. Surcharged
In blue In red

Exposición Santaneca
Julio de 1928

3 3

on
10 c., orange

1 1

UN CENTAVO

on
5 c., black

1930. Portraits in purple. Perf.

1 c.
Violet

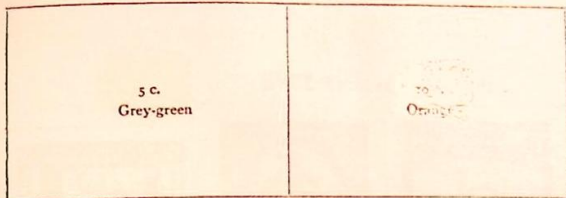


Brown

SALVADOR—continued

1021

1930—continued



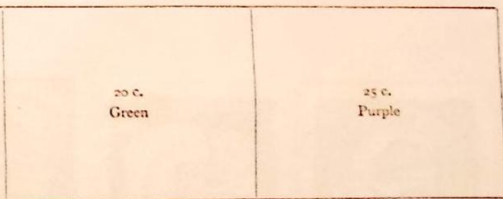
1930. Air stamps. As 1924-26. Surcharged



As last. Overprinted only

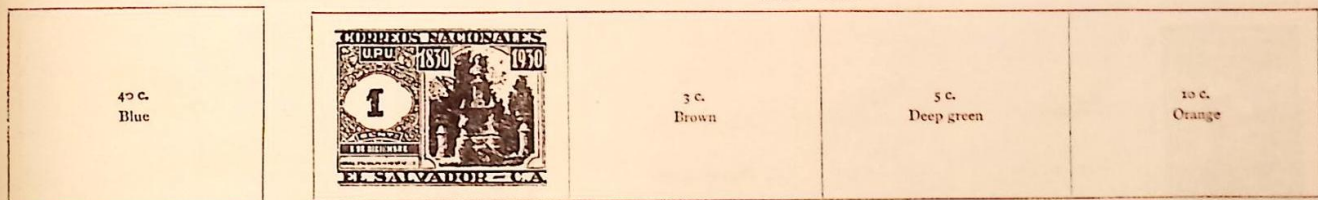


1930. Air stamps. Perf.



Scarlet

1930. Perf.



Violet

Air stamps



Red

As 1928. Overprinted



1 col.
Blue and green

Air stamps. Perf.

1931. As 1924-25. Surcharged



Green



786 3/4 Purple



Red



Brown



Black



Blue



Orange



Green



Green and rose



Red-brown



Blue and green

1932. Air stamps. Perf.



Red and violet



1933. Air stamps. Perf.



Vermilion



1934. Stamps of 1924-28. Surcharged

2 on 5 c., black



3 on 10 c., orange

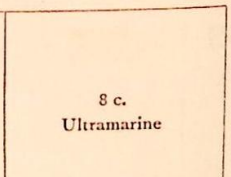
8 on 1 c., blue and green

Postage stamps

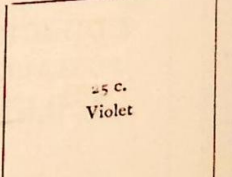
15 on 35 c., green and rose



5 c. Red



8 c. Ultramarine

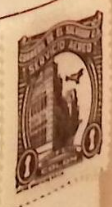


25 c. Violet

Air stamps



Brown



SALVADOR—continued

1935. Perf.
Postage stamps



Red

Air stamps



Brown

As last. Overprinted **HABILITADO**
Postage stamps



5 c.
Red

Air stamps

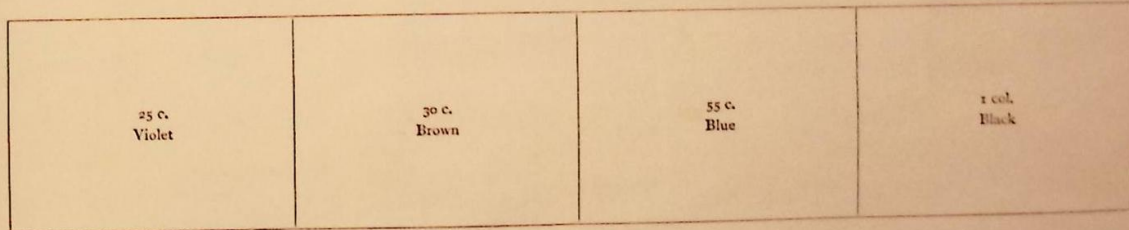


10 c.
Yellow

15 c.
Ochre



15 c.
Red



25 c.
Violet

30 c.
Brown

55 c.
Blue

1 col.
Black

1935. Perf.

Air stamp



Turquoise

15 c.
Blackish brown
(Inscribed
"SERVICIO
AEREO")

44/52

Postage stamps Centres in green. Perf.



5 c. Crimson



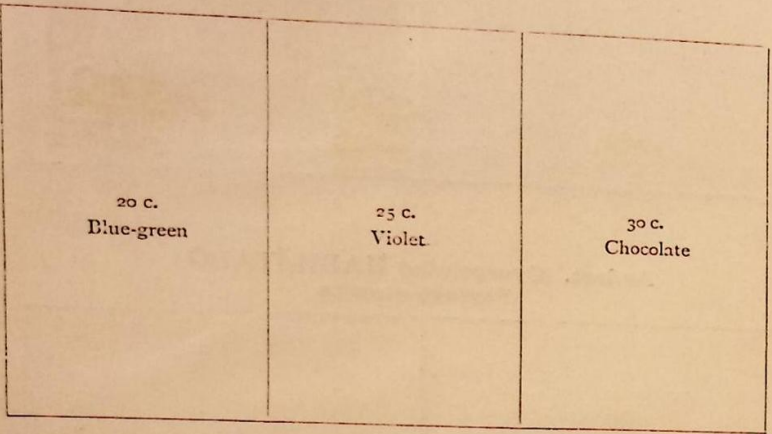
15 c. Red-brown



Air stamps

Chocolate

Yellow



20 c. Blue-green

25 c. Violet

30 c. Chocolate

Various designs. Perf.



Violet



Brown



Green



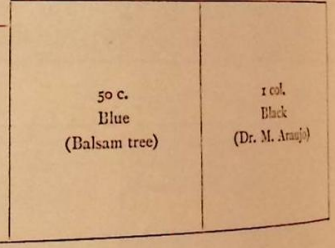
Blue



Orange



Bistre



50 c. Blue (Balsam tree)

1 col. Black (Dr. M. Arana)



1925 Parcel Post K.123



9786/43 (122)



K.267



L.207



ALBUM LEAF NO. 362 - SARGENT BOOKBINDERS LTD.

SALVADOR - FISCALS



1899

1901



1902



1903



1904



1917

1918

?

ALBUM LEAF No. 352 - SARRATT BOOKBINDERS LTD.

Made and Printed in England

Air stamps



Yellow

Various designs. Perf.



Brown



Green

50 c.

red.

(Blue)

(Black)

(Dr. M. Arce)



SAMOA



1918



8982
(1906)



1938 531/2



896



8121

8122

Air stamps



Yellow

Various designs. Perf.



Brown



Green

50 c.

Blue
(Balsam tree)

100

Black
(Dr. M. ...)

SAMOA

OFFICIALS



0170/51 - 1896



0288/99 - 1898



0667/12
1911.



SAMOA
(GERMAN SAMOA)

1025

STAMPS ISSUED UNDER GERMAN POSSESSION
1899. Stamps of Germany overprinted. Perf.



Brown

Carmine

1899. Perf.



1899



1899



6.20 3x Only on sale in Berlin.

SAN MARINO

1877. Wmk. "Crown." Perf.



Green



Red

1892. Surcharged (various types)



"5 c."
on
30 c., brown



Red

With figures only



SAN MARINO—continued

1892. As 1877



9 ? (same as 10c)

1894. Perf.



Marone and blue

Marone and red

Marone and green

1895-99. As 1892. Colours changed



1899. Perf.



1903. Wmk. "Crown." Perf.



Purple

Green



1905. As last, surcharged



1907. Perf.



1918. Stamps of 1903-1907 surcharged



SAN MARINO—continued

1027

1918. Centres in black. Perf.



Green



Lilac

As last. Overprinted "3 Novembre—1918"



1921. Perf.



Red-brown

Olive



1922. Perf.



Purple

SAN MARINO—continued

1923. Perf.



Olive

Blue and black

1923. Perf.

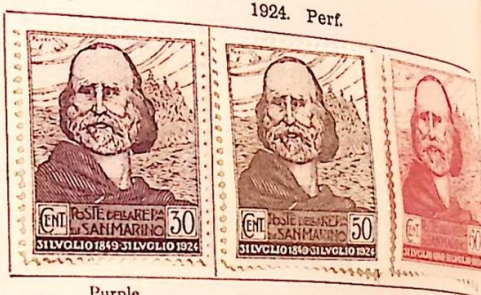


Chocolate

Olive

Brown

1924. Perf.



Purple

1924. As 1918. Surcharged



Green



107

Cmi 60

 on
 x l., black and green



1925. Perf.



Claret



2 l. Green

1926. Stamps of 1921 surcharged in black or red



1926. Centres in black. Perf.



Grey-olive

1926. Surcharged



1927. Stamps of 1926 surcharged



1927. Perf.



Magenta

1927. Stamp of 1925 surcharged



1927. Express stamp surcharged



1928. Perf.



Carmine

Red-brown

1929. Perf.



Emerald and orange



Emerald and chocolate

SAN MARINO—continued

1929—continued



1931. Air stamps. Perf.



1932. Perf.



Green



Green



Brown-purple

SAN MARINO—continued

1031

1932—continued



2 l. 75
Orange

Olive-green

1933. Air stamps. As 1931, colours changed. Surcharged



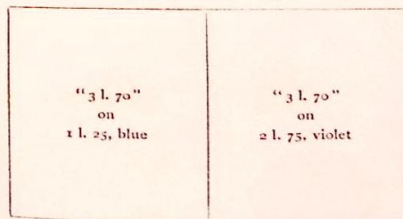
1933. As 1932. Surcharged



1934. As 1932. Overprinted and surcharged



Surcharged only



1935. Centres in black. Perf.



Brown



SAN MARINO—continued

1935. Centres in black. Perf.



1936. Various stamps. Surcharged

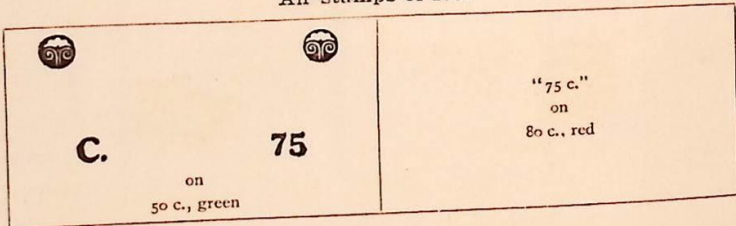
Stamps of 1926



Stamps of 1928



Air stamps of 1931



SANTANDER Dept of Colombia

1884



Blue

1887. Imperf.



Blue

1886



Blue

Red

1895. Perf.



Red

Violet

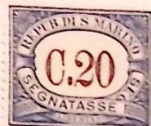
Red on buff

SANTANDER—continued

1885. Overprinted

1033

Postage Due 2nd April 1925 St. Domingo



E 98

E 22

E 93

E 104



E 101

E 103



E 105



10 c. Purple

Red 1885. Perf.



Red on buff

SANTANDER—continued

1908. Overprinted

1033

1901.
POSTAGE DUE



D 16+7

D 17

D 18



1936/43
POSTAGE DUE.



D 232



D 233



D 236



D 235

D 231
50 mm. 8 1/2 S.

D 237
1/30



D 238



D 237/40



D 241
2/5



D 243
2 1/2 S.

D 242



D 232



D 233



D 234



D 235



D 235 Sleeping San-top.



10 c.
Purple

Red

1895. Perf.

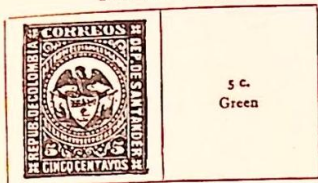


Red on buff

SANTANDER—continued

1033

1895-96. Perf.



5 c.
Green

Chocolate

1899. Perf.



Black on green

Black on rose

Blue

1903. Overprinted
Provisional.

Imperf.



Red

All the stamps below do not appear to have been cancelled. 1905. Imperf.



Green

Rose

Marone



50 c.
Mauve

1 peso
Blue

5 p.
Rose

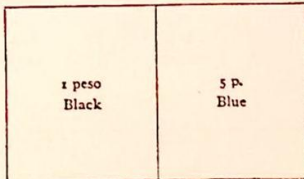
Yellow

Black

Blue

Scarlet

As last, on yellow paper



1 peso
Black

5 p.
Blue

1906. Fiscal stamp as 1903 issue
Surcharged. Imperf.



1906-8. Provisionals. Stamps of 1905 surcharged in blue, blue-black, black, green, or red



Medio
Cvo.

on
50 c., yellow



SARDINIA

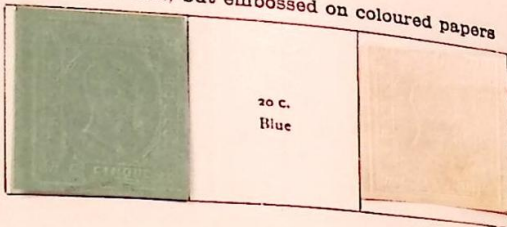
1851



5 c.
Black

Blue

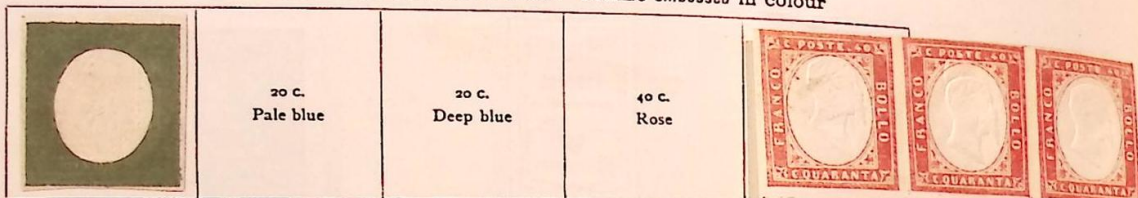
1852. As last, but embossed on coloured papers



20 c.
Blue

1/11 Reprints?

1854. As 1851. Colourless embossed head. Frame embossed in colour



20 c.
Pale blue

20 c.
Deep blue

40 c.
Rose

1855. Colourless embossed head. Frame unembossed in color



Brown

All type 2. 10 non.



*N 2 b (or 1850)
Two for one*

1162

100 nominal.

SASENO

*Island of the west coast of Albania in the Gulf of Venice
temp. occ. by Italy. 1914-43*

1923. Stamps of Italy overprinted SASENO *Renounced claim Treaty of Paris 10.2-17*



SAXONY



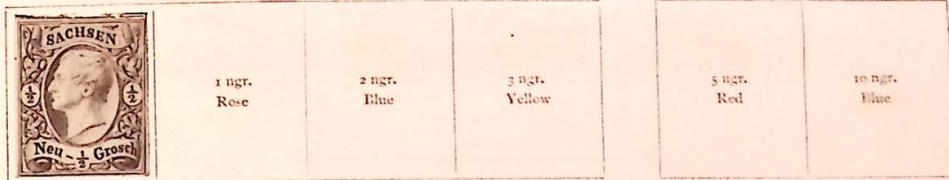
Red

Green

Grey

1856. Black impression

Coloured impression



Grey

1863. Perf.



Green

Orange

Rose



5 ngr.
Blue

SCHLESWIG

1920. Perf.



Brown



Brown

SCHLESWIG—continued

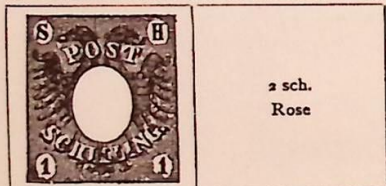
1920. Same types, but value in öre or kronen, overprinted 1. ZONE



SCHLESWIG-HOLSTEIN

SCHLESWIG-HOLSTEIN

1850. Arms embossed in centre. Imperf.



Blue

2 sch.
Rose

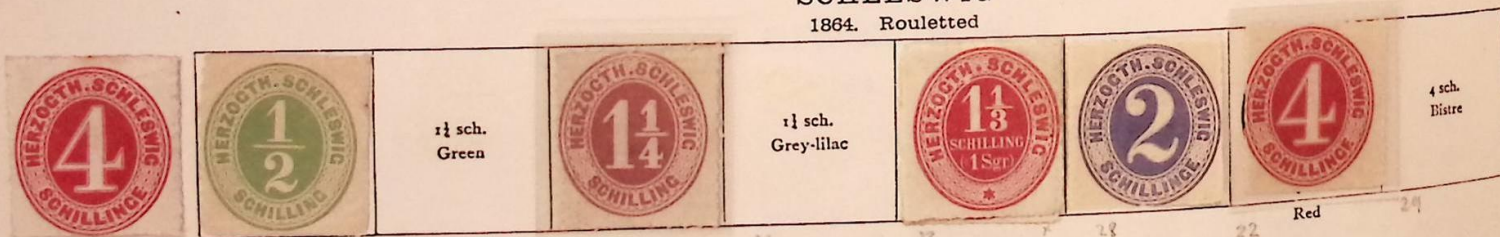
1865. Rouletted



Rose

SCHLESWIG

1864. Rouletted



1 1/2 sch.
Green

1 1/4 sch.
Grey-lilac

Red

4 sch.
Distre

HOLSTEIN

1864. Imperf. Grey network

"SCHILLING" large

"SCHILLING" small

Larger lettering in frame



Blue



Blue



Blue

1864. Rouletted
Rose network



Blue

1865. Rouletted

Austrian Administration



Green

1 1/2 sch.
Lilac

Rose

1866. Rouletted



Mauve

2 sch.
Blue

1887. French Colonial stamps, "Commerce" type, surcharged in black or red. Perf.
With figures only (many varieties)



"5"
on
30 c.
Cinnamon on drab

Red on green Red on green



"10"
on
5 c., green

Blue

1 & (cat. 1336)
like perf. 2/90

10 c. on 5 c. 1/90
not listed. Perf. 2/90

1892. Perf. Name in red or blue



Black on azure

Not listed - Perf. 2/90

1900. Colours changed



1903. Stamps of 1892 surcharged



1906. Perf. Name in red or blue



Grey



Black on bluish

1906—continued



Black on azure

1912. Stamps of 1892 surcharged in black or red



1914. Perf.



Brown and violet



1915-18. As 1914. Surcharged +5c in red



1917. As 1914



SENEGAL—continued

1039

1922. As 1914



Surcharged



1922. Surcharged in various colours



1925-28. As 1914



1924-28. As 1914. Surcharged in black or red



SENEGAL—continued

1924-28—continued



1928-30. As 1925-28



1931. Colonial Exhibition stamps. As Cameroons but overprinted "SÉNÉGAL"



1933. As 1925-28. New values



1935. Perf.



Deep blue



Postage Due



D 818 (1915)



D 1224



D 2017



D 2419



D 30



D 31

SENEGAL—continued

1041

1935—continued



173



178



179



181



182



183



184



185



186



187



188



189



190

189/190
completing set.

SENEGAL—continued

1041

1935—continued

Postage Due
1935.



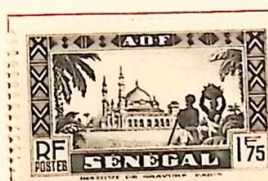
SENEGAL—continued

1041

1935—continued



Vermilion



1935. Air stamps. Perf.



Chocolate



Orange



SENEGAMBIA AND NIGER (NOW UPPER SENEGAL AND NIGER)

1903. Perf. Name in red or blue



Black on azure



SERBIA

1866. Imperf.



N 5 (Cat 1200) N 4 Red on lavender

Oct., 1866. Perf.



Rose

1868. As last. Imperf.



N 17 20

1869. Perf.



10 pa. Brown

N 17 16 Yellow

Imperf.

1873. Imperf.



Black

1881. Perf.



Green

1890. Perf.



Green

SERBIA—continued

1043

1890—continued

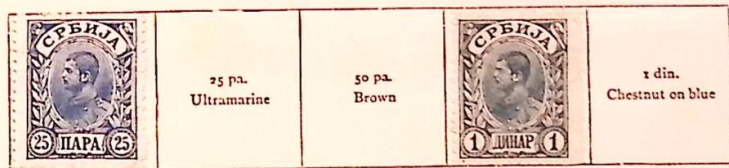


1894. Perf.



Orange

1901. As last, surcharged



25 pa.
Ultramarine

50 pa.
Brown

1 din.
Chestnut on blue




Red

1901-2. Perf.



Deep green

1903. Perf. Overprinted with Arms  in blue, black, red, or magenta



Brown



Claret

Surcharged in red



1 ПАРА 1
on
5 din., brown

1904. Perf.



Rose

SERBIA—continued

1904—continued



Emerald



1905. Perf. Centres in black

20 pa.
Yellow25 pa.
Blue

Red



1911. Perf.



Green



1914. Change of colours

5 d.
Purple

SERBIA—continued

1045

1915. Perf.

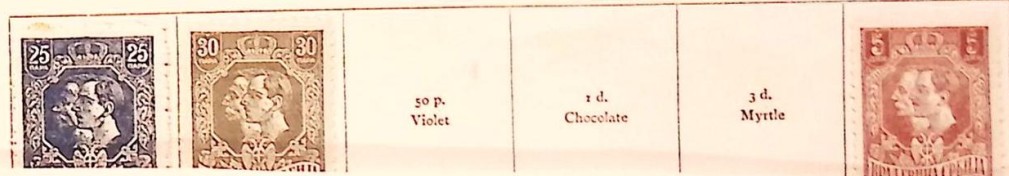


Kingdom of the Serbs, Croats and Slovenes

1918. Perf.



Red



50 p.
Violet

1 d.
Chocolate

3 d.
Myrtle

1905-1914. Postage Due.

Granite paper.



5p
Brown Lake
61

Wove paper.



66 Rose Mgnta

67

1918. Kingdom of the Serbs, Croats & Slovenes.



227/31
Paris Post.

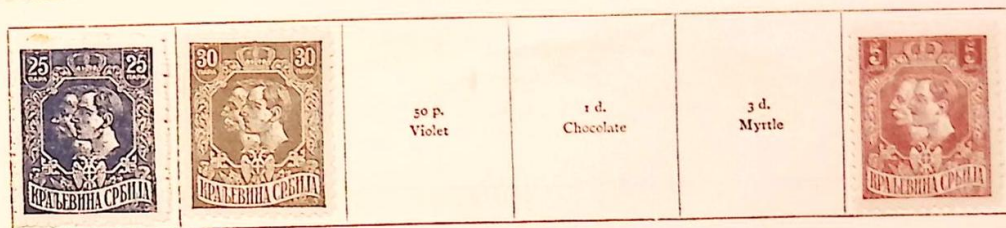
SERBIA—continued

1045

1915. Perf.



Kingdom of the Serbs, Croats and Slovenes 1918. Perf. 19 Dec 1918



Municipal issue in Treaty ports

SHANGHAI

1865. Imperf.

"Candareens" in singular or plural



Black



1866-73. Perf. Value in "cents"



22 Rose

Lilac

Blue

Green

1873. Surcharged in black, blue or red



SHANGHAI--continued

1873--continued

"3 cand."
on
2 c., rose



1 c.
Yellow on yellow

1 c.
Yellow



3 c.
Rose on rose

3 c.
Rose

Brown

Orange

1867-76. Perf. Value in "candareens"



Slate



9 c.
Blue



12 c.
Brown

Drab

1873-77. As last, surcharged as 1868-73

"1 cand."
on
3 c., rose

"1 cand."
on
6 c., green

1877-86. Perf. As 1867-76. Values in "cash"



20 c.
Green



40 c.
Brown



60 c.
Violet

As last, surcharged in blue or red
1879-86



80 c.
Pale red



Rose

"40 cash"
on
80 c., pale red



1886. No frame

With frame

"40 cash"
on
100 c., yellow
(red)

"60 cash"
on
80 c., blue



Brown

"60 cash"
on
100 c., yellow

20 CASH
文十二
on
40 c., brown

"20 cash"
on
80 c., pale red

20 CASH
文十二
on
40 c., brown

1888. As 1877-86. Colours changed

1889. Stamp of 1877-86 surcharged
in black and red

20 cash
Grey

40 c.
Black

60 c.
Rose

80 c.
Green

100 c.
Blue



Yellow

Surcharged as 1886 (no frame), in red

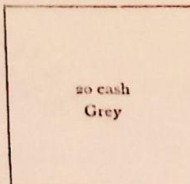
1899. As 1888, but wmk. "Chinese characters"



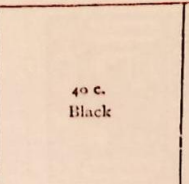
20 cash
Grey



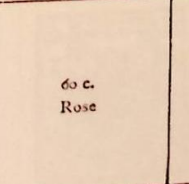
40 c.
Black



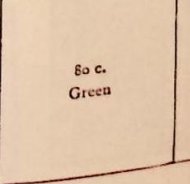
60 c.
Rose



80 c.
Green



100 c.
Blue



SHANGHAI

Cash Issue, Colors Changed, Perf 15, 1912 26-33-7



Whole Stamp Lithograph



127/24 Lime - no dot

Whole Stamp Typograph

Colors Same - Colors Changed
Perf 12 x 15 Compound 1916 26-33-7

127/24

Stamp Typograph, Inscriptions Lithograph

Colors Changed & New Values 1936



127/24

127/24

SHANGHAI

Postage Due



2 169 175

Jubilee Issue



176 a

Jubilee Overprint



177 178

SHANGHAI—continued

1047

1890. No wmk. Perf.



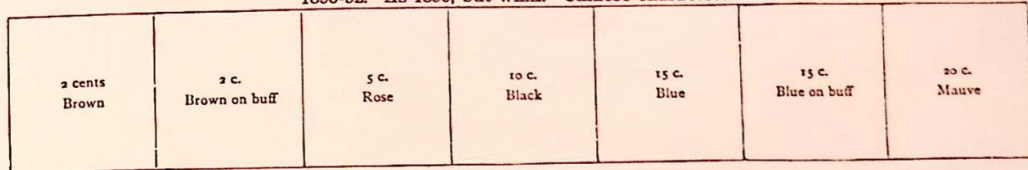
Black

Surcharged in blue



Rose on buff

1890-92. As 1890, but wmk. "Chinese characters"



1892. As last. Colours changed



Surcharged in blue



Brown

Dec., 1893

Wmk. "Chinese characters." Perf.



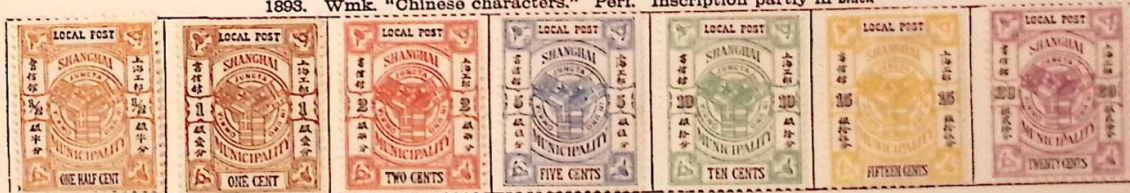
Rose and black

Half-stamps of 1890-92 or 1892 surcharged in blue or red



Green (blue)

1893. Wmk. "Chinese characters." Perf. Inscription partly in black



Orange

As last, overprinted



Orange

1896. As 1893. Colours changed and new values



Stamps of 1893 surcharged

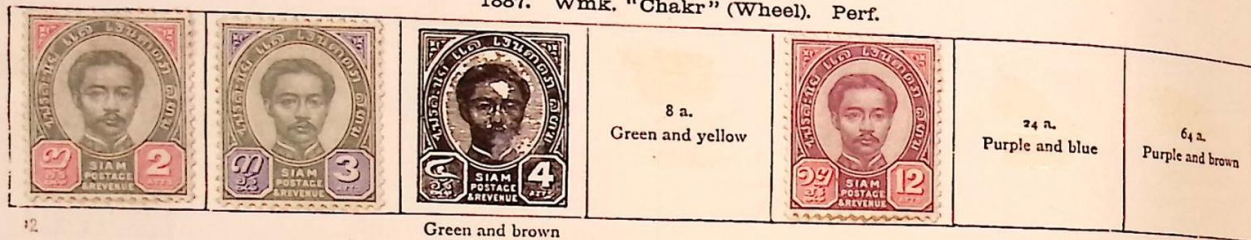


SIAM

1883. Perf.



1887. Wmk. "Chakr" (Wheel). Perf.



1890-9. Stamps of 1887 surcharged (several types of most of the surcharges)
With Siamese characters only, with or without numerals



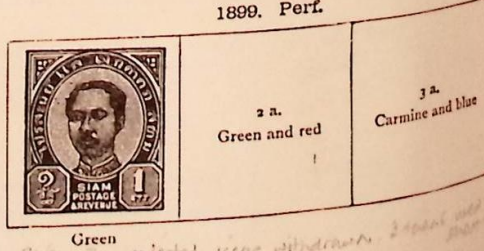
With Siamese and English characters



1890. As 1887



1899. Perf.



Green
7.89 type rejected, 1890 withdrawn

SIAM—continued

1049

1899—continued

4 a. Black and green	10 a. Rose and green
-------------------------	-------------------------

1900-4. Perf.



Grass-green

4 a. Carmine			8 a. Green and orange	10 a. Blue	12 a. Chocolate and carmine	14 a. Indigo
-----------------	--	--	--------------------------	---------------	--------------------------------	-----------------

1905-8. Surcharged

24 a. Chocolate and blue	28 a. Chocolate and blue	64 a. Chocolate and chestnut			๒ ๕๖ 2 Atts. on 24 a. Chocolate and blue	๙ ๕๖ 9 Atts. on 10 a., blue
-----------------------------	-----------------------------	---------------------------------	--	--	---	-----------------------------------

1905-8. Perf.



Pale red and grey



1907-8

Surcharged in black

Stamp of 1887



Stamp of 1906

6	4
on	
5 a., rose and carmine	

Overprinted in black or red
Stamps of 1906



On 1 a., green and yellow

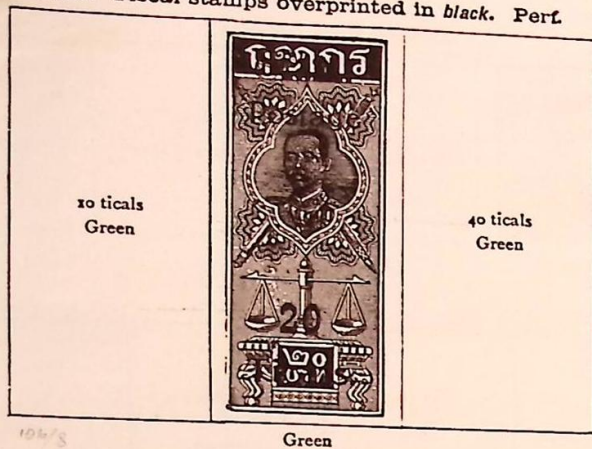
8 a.	18 a.
Olive-yellow and slate	Brown and chocolate

Provisional of 1907-8

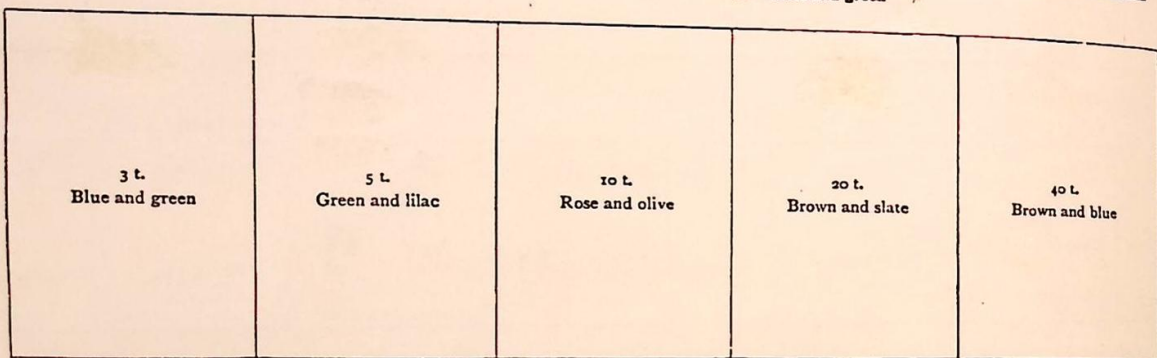
"4 a."
on
5 a., rose and carmine

SIAM—continued

1907. Fiscal stamps overprinted in black. Perf.



1908. Perf.



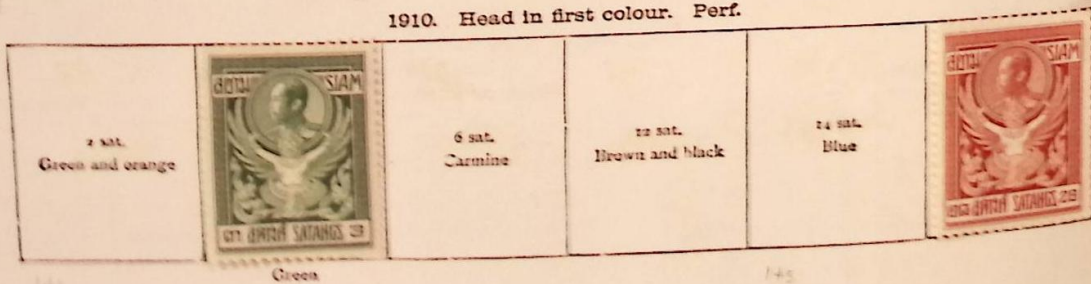
Aug., 1909. Stamps of 1908 surcharged with new currency, in black



1909. Stamps of 1900-4 surcharged, in black



1910. Head in first colour. Perf.



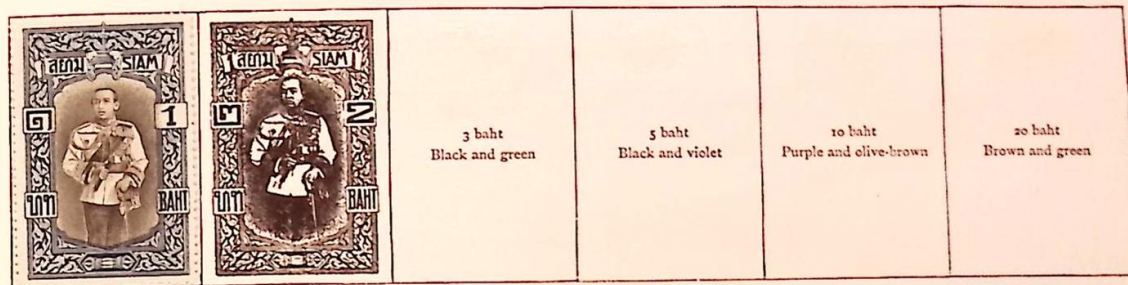
SIAM—continued

1051

1912 Perf.



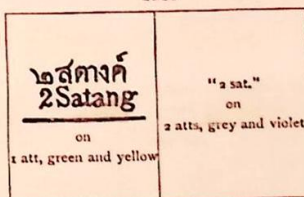
Brown



Sepia and rose

As 1906 and 1910. Surcharged
1915

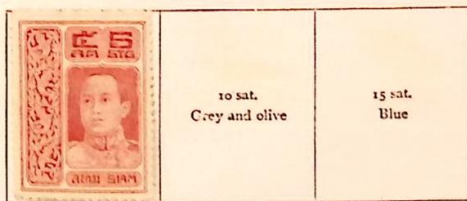
1914. As last. Surcharged in red or blue




1916. In red



1917. As 1912



1918. As 1912-17. Overprinted  in red



Brown



Sepia and rose

SIAM--continued

1918--continued

10 b. Purple and olive-brown	20 b. Brown and green
---------------------------------	--------------------------

136/7

As last. Overprinted **วิชัย**
VICTORY

148/9

	15 sat. Blue		2 b. Sepia and rose	3 b. Black and green	5 b. Black and violet
---	-----------------	---	------------------------	-------------------------	--------------------------

1919. As 1912. Surcharged


In green

In red

๕ 5 on 6 sat., rose	๑๐ 10 on 12 sat., sepia and grey
----------------------------------	---

157/8

1920. Perf.


2 sat. Brown on yellow	3 sat. Green	5 sat. Rose	
---------------------------	-----------------	----------------	---

211/22

214

Orange and black

1922-26. As last. New colours

15 sat. Blue	25 sat. Chocolate	50 sat. Black and bistre	3 sat. Red-brown		5 sat. Violet	15 sat. Carmine
-----------------	----------------------	-----------------------------	---------------------	---	------------------	--------------------

1925. Perf.

25 sat. Deep blue	9 s. Purple on yellow		5 s. Green	10 s. Orange and black
----------------------	--------------------------	--	---------------	---------------------------

230/1

Chocolate

SIAM—continued

1053

1925—continued

15 s. Carmine	25 s. Blue	50 s. Black and brown	1 b. Sepia and blue
------------------	---------------	--------------------------	------------------------


1926. Perf.

1 t. Green and lilac			5 t. Olive and violet	10 t. Brown and scarlet	20 t. Brown and blue
	Red and carmine				

1928. As 1912 and 1922-26
Surcharged in black or red


"5 sat." on 15 sat., carmine	"10 sat." on 23 sat., brown
------------------------------------	-----------------------------------

1928-29. Perf.

	3 sat. Green	5 sat. Violet	10 sat. Carmine	15 sat. Blue
Chocolate				



25 sat. Orange and black	50 sat. Black and orange	80 sat. Grey and blue		2 b. Brown and carmine	3 b. Black and yellow-green	5 b. Grey and violet
			Black and blue			

1930. As 1910. Surcharged in red or blue

10 b. Brown-lilac and olive	20 b. Red-brown and blue-green	40 b. Sepia and green	"10 sat." on 12 sat., brown and black	
--------------------------------	--------------------------------------	--------------------------	--	---

SIAM—continued

1932. Perf.

		5 s. Violet	10 s. Black and carmine	15 s. Black and blue	25 s. Black and mauve
--	--	----------------	----------------------------	-------------------------	--------------------------

Brown-red x



Black and claret

Indigo



204



208 (1920, Scott's Fund)



SICILY

1858. Imperf.

279 (1937, Real Post)

1/2 gr. Orange		2 gr. Blue			20 gr. Slate	50 gr. Maroon
-------------------	--	---------------	---	--	-----------------	------------------

Olive

SILESIA (Eastern)

1920. Stamps of Czecho-Slovakia overprinted SO in black, red, or blue
1920

Imperf.



Brown



Slate



18th Feb 1920 Nostalgic Day

225/40



18th Feb 1920 Nostalgic Day



N 41/5

18th Feb 1920 Nostalgic Day



247/56



Carnation

Olive



(s. k.) blue

(s. k.) purple

(s. k.) grey-blue

SILESIA (Eastern)—continued

1055

1920—continued



Not listed.

Olive



21

21a. Black & P.

Perf.



24a

25

26

27



27

28

29

30

1920. Stamps of Poland overprinted S. O.
1920.



Carmine

Olive



(2 k.) blue

(2 k. 50) purple

(5 k.) grey-blue

SILESIA (Upper)

1920. Perf.



Chocolate

Surcharged



1921. Perf.



Green



Slate



1922. As last. Surcharged



1850



Black

Red

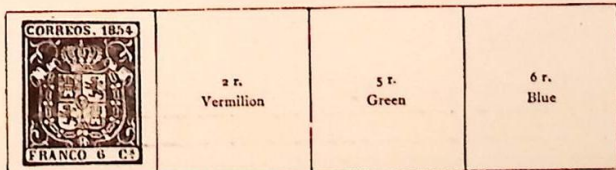
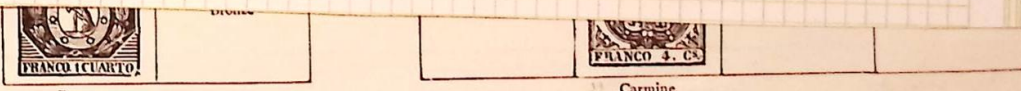
1851

UPPER SILESIA.

Stamps issued during a plebiscite held in 1921 to decide the future of the district / after the plebiscite it was divided between Germany and Poland. SG 3646. 20th March 1921.



Inter-Alleed Post.
#8 (1920)



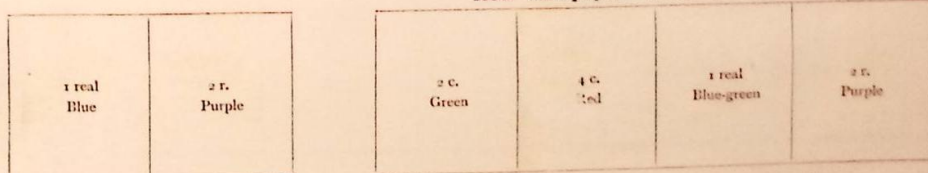
Carmine

1855. Bluish paper. Wmk. "Loops"






Red

1856. White paper. Wmk. "Crossed lines"




SPAIN—continued



1856-57. As last. No wmk.

2 c. Green	2 c. Yellow-green	4 c. Rose			
---------------	----------------------	--------------	--	---	---



1860. Tinted paper

	4 c. Orange on green	12 c. Carmine on buff	19 c. Brown on brown	1 real blue on green	2 r. Lilac on lilac
---	-------------------------	--------------------------	-------------------------	-------------------------	------------------------

1862. Tinted or white paper

		4 c. Brown	12 c. Blue on rose	19 c. Carmine on lilac	19 c. Carmine	1 real Brown on straw	2 r. Green on rose
---	---	---------------	-----------------------	---------------------------	------------------	--------------------------	-----------------------

1864. Tinted paper

2 c. Blue on lilac		4 c. Red on red		19 c. Lilac on lilac	1 real Brown on green	2 r. Blue on rose
-----------------------	--	--------------------	---	-------------------------	--------------------------	----------------------

1865

	2 c. Rose	2 c. Carmine		12 c. Rose and blue	19 c. Rose and brown	1 real Green	
---	--------------	-----------------	---	------------------------	-------------------------	-----------------	---

Perf.

2 r. Flesh	2 r. Rose	2 r. Claret	2 r. Lilac	2 r. Purple
---------------	--------------	----------------	---------------	----------------

2 c. Rose	2 c. Carmine
--------------	-----------------

1866. Perf.


4 c. Blue	12 c. Rose and blue	19 c. Rose and brown	1 real Green	1 r. Orange	2 r. Purple
--------------	------------------------	-------------------------	-----------------	----------------	----------------



Lilac

SPAIN--continued

1866-67. Perf.

	4 c. Blue	12 c. Orange	12 c. Yellow	19 c. Brown	10 cmos. Green	20 cmos. Lilac
---	--------------	-----------------	-----------------	----------------	-------------------	-------------------

Rose

1867. Perf.

					20 c. Lilac	20 c. Slate
---	---	---	--	---	----------------	----------------

Brown

Blue

Orange

Rose

Green

November, 1867. Perf.

			10 mils. Brown	25 mils. Rose and blue	
---	---	---	-------------------	---------------------------	---

Pale green

Chestnut

Brown

1868. Stamps of the two last issues overprinted (two types of overprint)

HABILITADO POR LA NACION. on 5 mils. Green	10 mils. Brown	25 mils. Rose and blue	50 mils. Brown	12 cuartos Orange	19 cuartos Rose
--	-------------------	---------------------------	-------------------	----------------------	--------------------

1868-69. Colours changed

10 cents. Green	20 cents. Lilac
--------------------	--------------------

19 cuartos Brown (as 1867)	25 mils. Blue (as Nov., 1867)
----------------------------------	-------------------------------------

1869. Perf.

	50 mils. Lilac
---	-------------------

Purple

Stamps of the two last issues overprinted as 1868

		19 cuartos Brown		50 mils. Purple	100 mils. Brown	200 mils. Green
---	---	---------------------	--	--------------------	--------------------	--------------------

Brown

Green


1870. Perf.

						10 m. Rose
---	---	---	--	---	---	---------------

Bistre

SPAIN—continued

1870—continued

10 m. Red	25 m. Lilac	25 m. Mauve	50 m. Blue	50 m. Ultramarine	100 m. Chestnut	100 m. Brown
100 m. Orange	200 m. Brown		1 esc. 600 mils. Lilac	2 esc. Blue	12 cuartos Brown-red	19 cuartos Green

1872. Imperf.



1873. Imperf.



Green

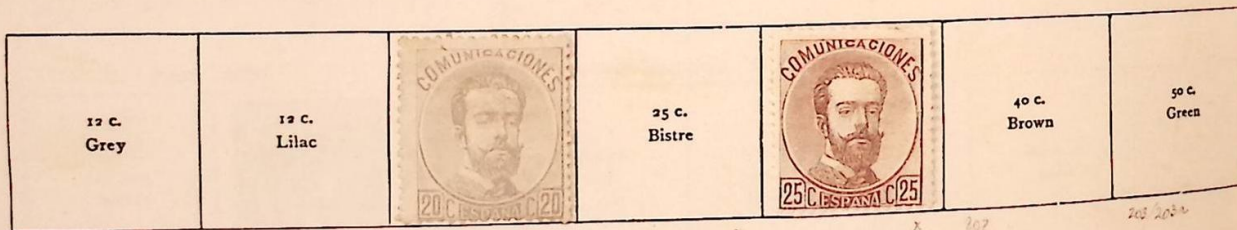
1871



Rose

6 c.
Blue

10 c.
Purple



12 c.
Grey

12 c.
Lilac

25 c.
Bistre

40 c.
Brown

50 c.
Green

1873-74. Carlist stamps. Imperf.



1 peseta
Lilac

10 p.
Green

Chestnut



Blue



Blue (accent over "N")



Lilac

Carlist issue not cat.



Brown



Rose



Rose



1 r.
Claret

1 r.
Red

SPAIN—continued

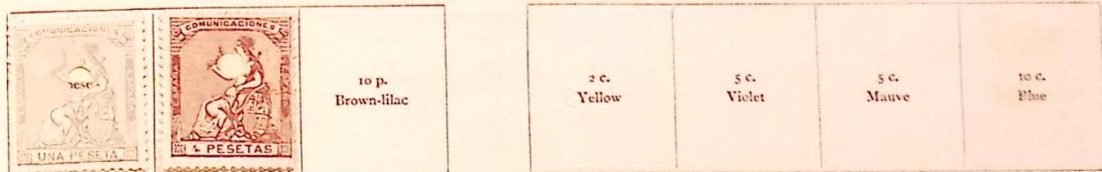
1061

1873. Perf.



Black

1874. Perf.



Chestnut

1874. Perf.



Brown

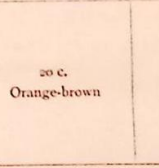
1875. Perf.



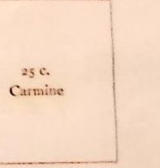
Brown



5 c.
Lilac



20 c.
Orange-brown



25 c.
Carmine



1876. Wmk. "Castle." Perf.



Bistre

1878. Perf.





Sepia

SPAIN—continued

1878—continued

20 c. Black	25 c. Olive	40 c. Brown	50 c. Green	1 peseta Grey	4 p. Violet	10 p. Blue
----------------	----------------	----------------	----------------	------------------	----------------	---------------

1879. Perf.

 Black	5 c. Green	10 c. Carmine	20 c. Brown	25 c. Grey	40 c. Sepia	
--	---------------	------------------	----------------	---------------	----------------	---

1882. Perf.

1 peseta Rose	4 p.		 Salmon	25 c. Yellow	30 c.	75 c. Lavender
------------------	------	---	---	-----------------	-------	-------------------

1889. Perf.

							
Green							
				75 c. Orange			

1900. Perf.

						
Brown						
	40 c. Olive					

1905. Perf.



Green

Scarlet

Mauve

Indigo



Blue-green

Rose

Black

Carmine

1905. As 1900. Colours changed



Purple

Orange



40 c.
Rose



1909-10. Perf.



Green

No perf. 14.

1920. Imperf.

1920. Perf. Engraved



4 P.
Plum



20 c.
Violet

Yellow

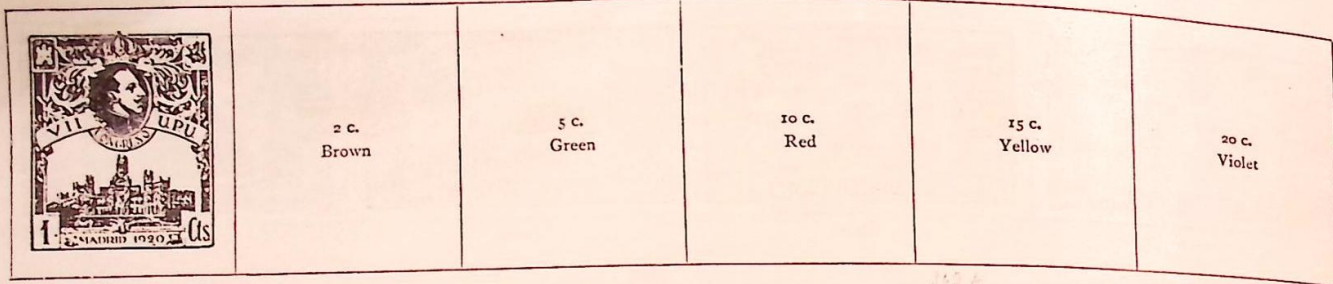
Same types overprinted **CORREO AEREO** in black or red

As last. Lithographed

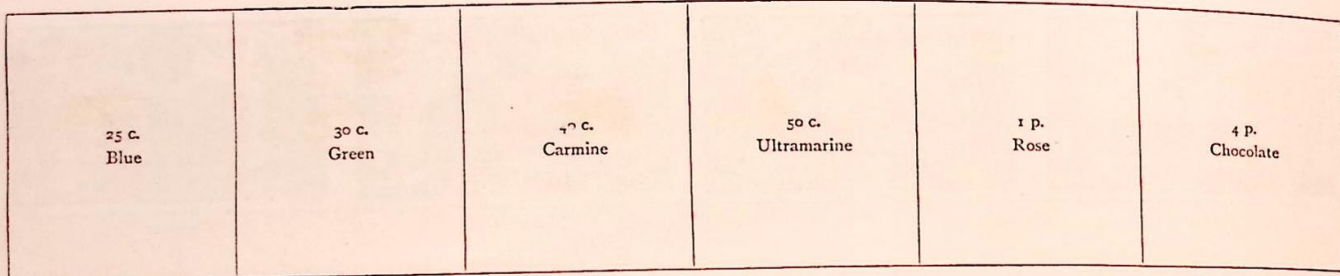


20 Lila





A Green

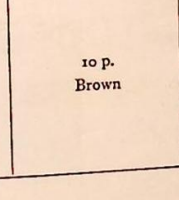
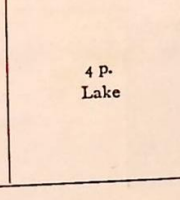


373A

1922-27. Perf.



377 Carmine



Greenish black

1928. "Red Cross" stamps. Perf.



Black



Vermilion



Purple



Green

1926—continued

"Red Cross" Air stamps. Perf.



Red



Black and red



Red and green



4 p.
Carmine and yellow

1927. "Red Cross" stamps variously overprinted in red, blue or green



As last. Surcharged in green, black, blue or red



1927 "Red Cross" Air stamps overprinted in red, brown or blue



1927—continued

As last. Surcharged in red or blue



"Red Cross" Express stamp
Overprinted in violet



Purple

"Red Cross" stamps of Spanish colonies similarly overprinted and/or surcharged in various colours

Stamps of Spanish Morocco (Tangier)

Stamps of Spanish Morocco (Protectorate)

Stamps of Cape Juby



Stamps of Spanish Guinea

Stamps of Spanish Western Sahara



Present from ...
13.2.1941
(NHcat 2743)

1928. Perf.



Black and violet

1928—continued



1928—continued



1929. Exhibition stamps. Perf.



Blue-green



Sage-green

Sepia



Green

Air stamps. Perf.



Brown

"League of Nations" stamps. Stamps of 1920 and 1922-27 overprinted



1929—continued



1929-30. Perf.



Blue
 Postal Tax stamps 400 stamps value,
 issued from 1929 to 1935
 listed in Michel No. 1-5 (1)

As last



1930. "Goya" stamps. Perf.



Vermilion



Red



Back

1930

Goya portrait and "naked Maja"

As the late Cliff Rayner said "suirable for a Spanish specialist or dirty old man"



Greenish blue and grey-blue



Blue

1930. Railway stamps. Perf.

1930. Inscribed "Serie 6a"



Lemon and black



Blue-green

SPAIN—continued

1071

1930—continued

Air stamps. Perf.



Yellow and vermilion



Blue-green and olive



Black and claret



Greenish blue and grey-blue

1930. Perf.



Blue

1930. Railway stamps. Perf.

1930. Inscribed
"Serie 6a"



Lemon and black



Blue-green

1930—continued



Air stamps



Slate

Brown

1930. Columbus stamps. Perf.



193/607

Specimen



Specimen, opp. section



1930 F



F
Inter
only
are e
refle

For
in bl
ordi
othe
need
star
low
com
just
dire
Ber
dot
dot

1930—continued

1930 Railway Congress airmail issue SG 547 - 552



Forgery AFA 548



Genuine AFA 548



FORGERY

(Always set opposite genuine)

Intended primarily for sale to collectors, the original issue of only 25,000 sets was valid for postage for only three days. Excellent lithographic forgeries of this lithographed issue exist in very large numbers and are encountered by collectors far more frequently than the genuine stamps. Current catalog prices do not reflect the scarcity of the genuine stamps but rather the abundance of the forgeries.

Forgeries: The control number, printed in blue on the back of the stamp, is ordinarily A000,000. The assertion that other control numbers exist on forgeries needs verification. Near the base of the stamp is the seal of the Congress, the lower left-hand portion of which is comprised of dots. The uppermost dot just touches the lower line of the ribbon directly under the "93" of "1930". Beneath this dot are two widely spaced dots and below them, another single dot.

Genuine: The control marking is always "A" followed by an actual number. Below the "93" of "1930" are two widely spaced dots that do not touch the line. Beneath these is a single dot followed by two more widely spaced dots.

1930—continued



Air stamps



1930—continued



1930. Seville Exhibition stamps. Various designs inscribed "PRO UNION IBEROAMER..."



Blue-green

Brown



Slate-blue

1930—continued

Air stamps. Various designs incorporating aeroplanes inscribed as last



Black

1931. Perf.



Overprinted

REPUBLICA

On stamp as last

Imperf.

King Alfonso type



Black

Green

Stamps as last overprinted REPUBLICA



Greenish black

1931. Stamps as last. Continuously overprinted



(2 c.) Brown



1931. Postal Union Congress stamps. Various designs inscribed "III CONGRESO UNION POSTAL PANAMERICANA". Perf.



6797

Mauve

6705

Green

689 / 706



Air stamps



Marone



Blue

Black

1931. Various designs inscribed "MONTSERRAT-1031-1831-1931". Perf.



Blue-green



4 P.
Magenta

Air stamps



10 p.
Brown

10 c.
Green

50 c.
Orange

1 p.
Slate-grey

1932-35. Perf.



Blue-green and green

Imperf.

Perf.



Chestnut



Red-brown

Sepia

Yellow-green

Yellow-green

Blue-green



Blue-green

Lake

Red

Red

Sepia

Red

SPAIN—continued

1931-36—continued



765 A Red 765 B Ultramarine 765 C Yellow 762 A Black 763 A Magenta 765 D Brown

1935. Perf.



780 Blue 782 A Deep blue-green 783 Red 762 B Black 764 A Black 785 Red

1936. Various portraits. Inscribed "XL Aniversario Asociacion Prensa de Madrid." Perf.



Red



Brown-lake

Air stamps. Various designs

