

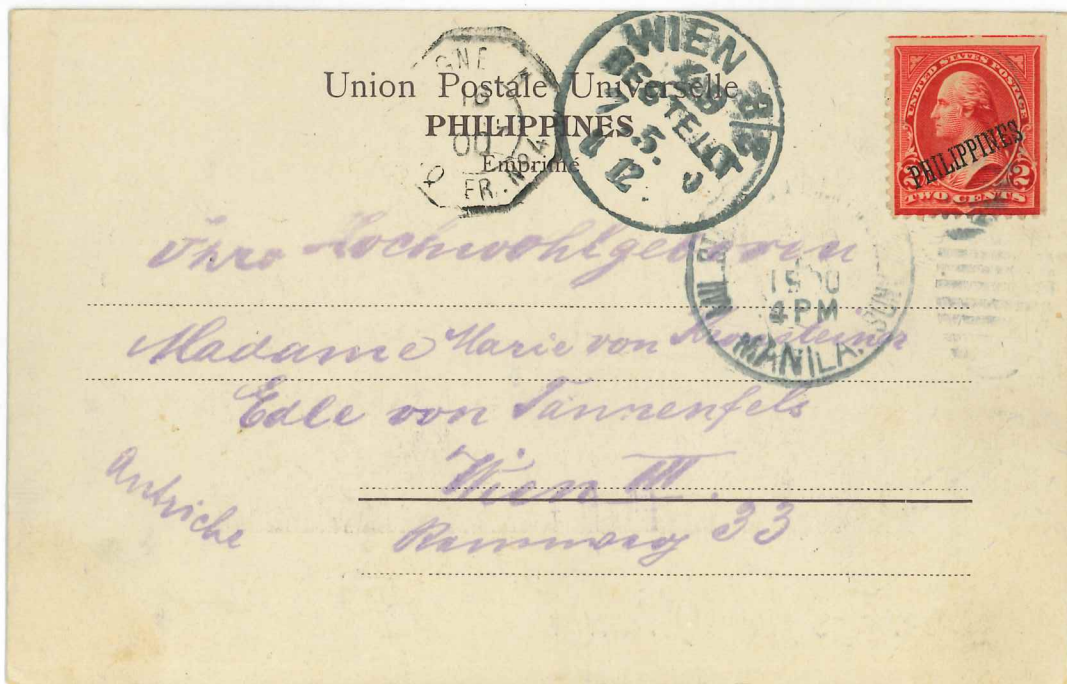
Lot 241

Country "APARRI" CDS Cat. No. 213
 Description _____ Price 495



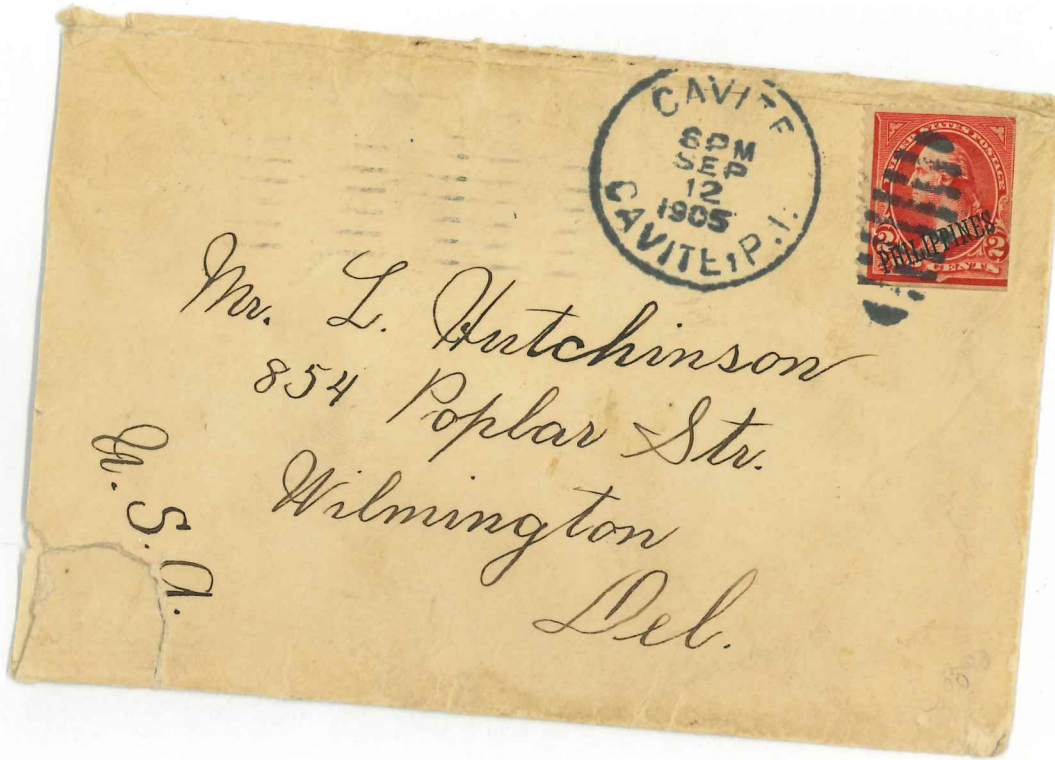
Lot 248

Country Post Card to Austria w/ French Paquet transit Cat. No. _____
 Description AND Vienna Receiving CDS Price 4150 (112)



Lot 23

Country CAVITE P.I. CAS WITH SOLID HORIZONTAL LINES Cat. No. 214
 Description _____ Price \$100 (112)



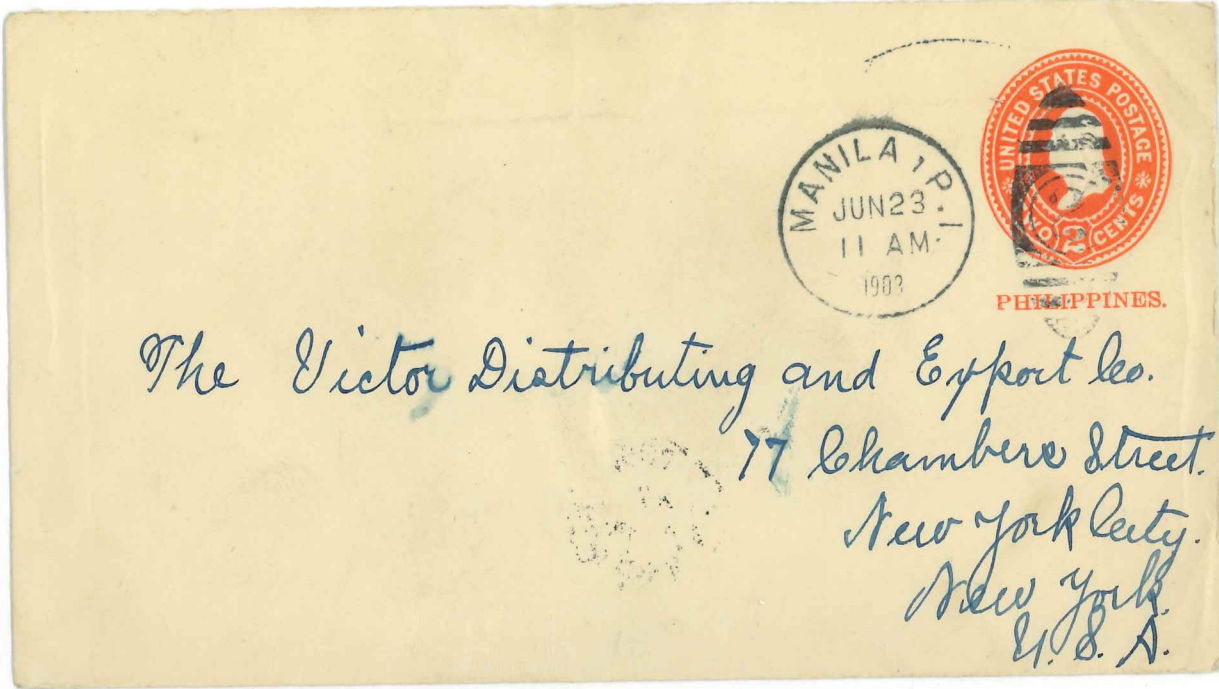
Country Pair on cover to USA Cat. No. 216
 Description _____ Price \$125 (11)

Lot 262



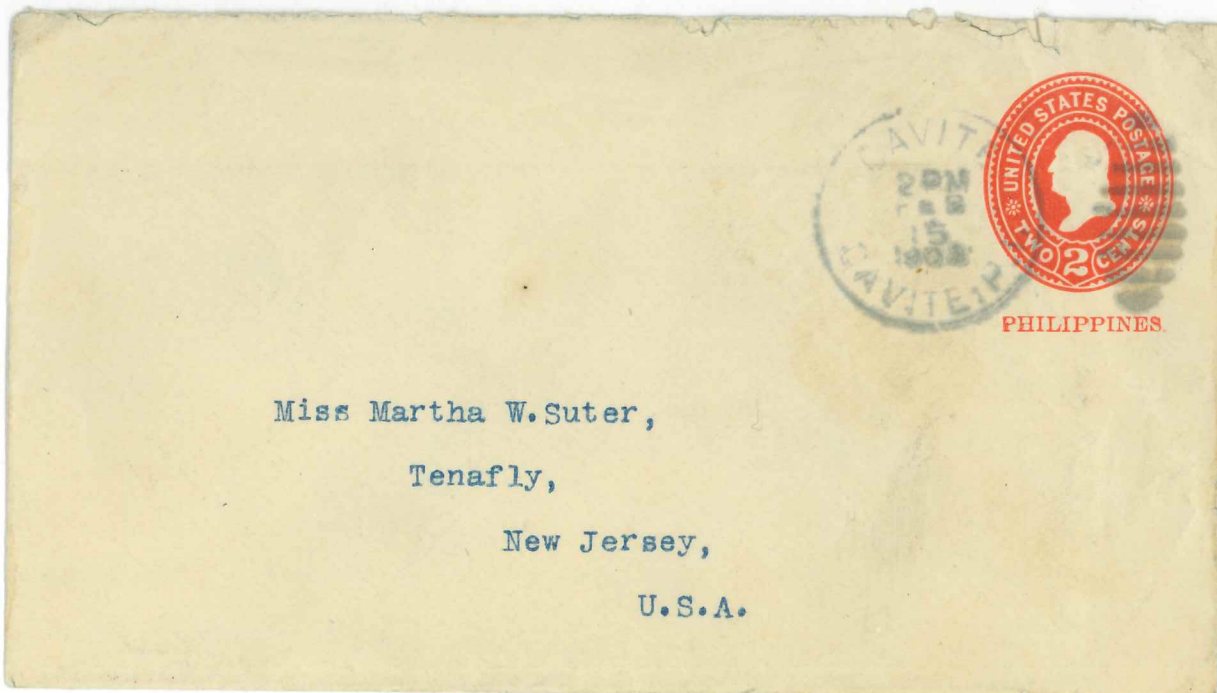
Let 266

Country Manila PI CDS w/2ⁿ in oval Cat. No. U8
 Description _____ Price \$15 (12)



Let 267

Country Cavite, PI CDS Cat. No. U8
 Description MANILA TRANSIT ON RETN Price 12 (12)



Set 269

Country OVPT. WRAPPER w/ Manila P.I w/ "1" IN oval Cat. No. W1
Description _____ Price 75



Set 273

Country MANILA TO SWITZERLAND Cat. No. 215, U18
Description _____ Price \$ 125 2/16



Let 279

Country TO GERMANY Cat. No. UX 6
Description _____ Price 975 (15)



Let 281

Country POST CARD TO France Cat. No. 226
Description _____ Price 750 (16)



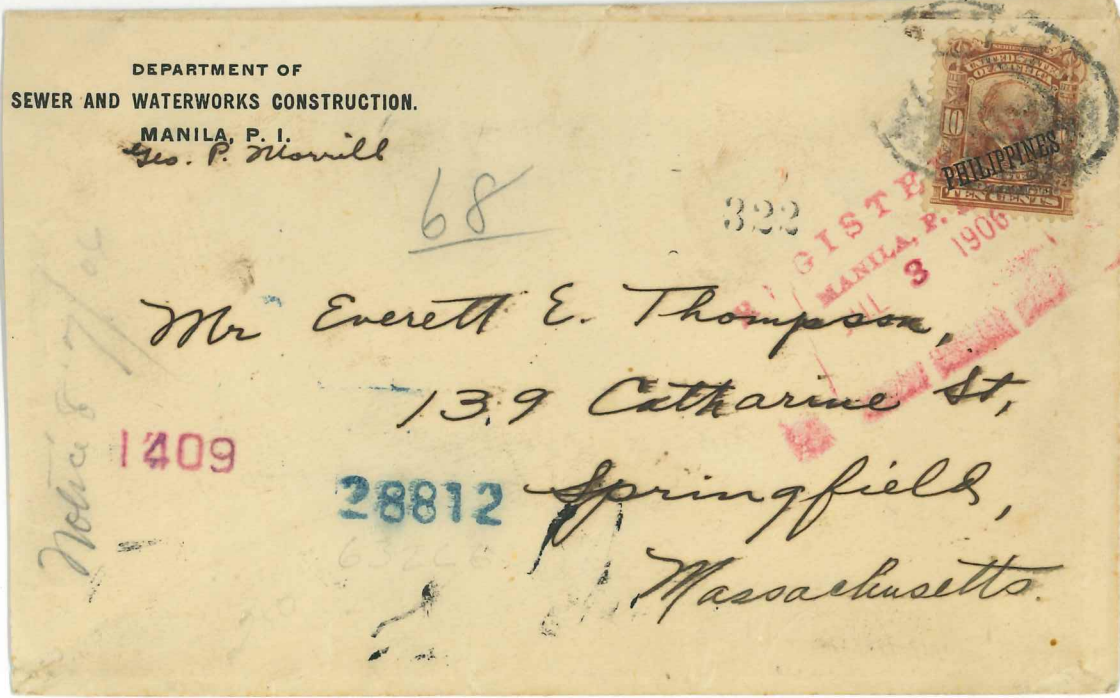
Let 284

Cat. No. 214.226
Price #130.16



Let 285

Country Registered Letter to USA Cat. No. 233
Description _____ Price #25.12



Lot 286

Country _____ 1904 _____ Cat. No. 240 _____

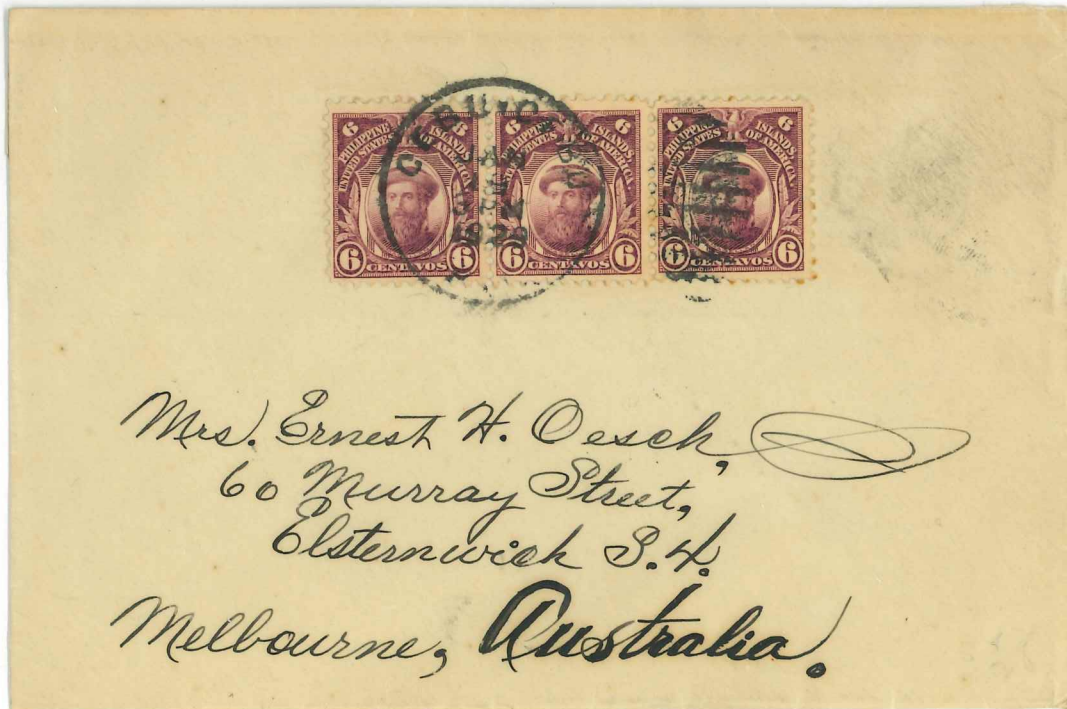
Description _____ Price _____



Lot 290

Country _____ 1929 _____ Cat. No. 243 _____

Description _____ Price \$50 (2017) _____



Lot 291

Country Nippon Mitsu Smp Envelope 1917 Cat. No. 245

Description _____ Price \$100 (2017)



Lot 292

Country _____ 1911 Cat. No. 242; 247

Description _____ Price 430 (2016)



Set 293

Country _____ 1915 _____ Cat. No. 245 _____

Des _____ Price \$50 (7/17) _____

O. S. COLE
1878 AZCARRAGA
P. O. Box 411
MANILA, P. I.



SEÑOR ANTONIO COMERMA

~~POST RESTANTE~~

By road to Paris

~~PLACE SAINT-FERRÉOL~~

MARSELLA,

FRANCE.