



YOKOHAMA  
JAPAN  
APR 10 1898



Saluti -  
Amorosa



YOKOHAMA  
JAPAN  
APR 10 1898

Amorosa -  
(has spirit on post in  
mail) -

Saluti  
Amorosa





MIYAKO-ODORI OR "CHERRY DANCE" AT KIOTO.

Salute de Kyoto.  
A. Marconi



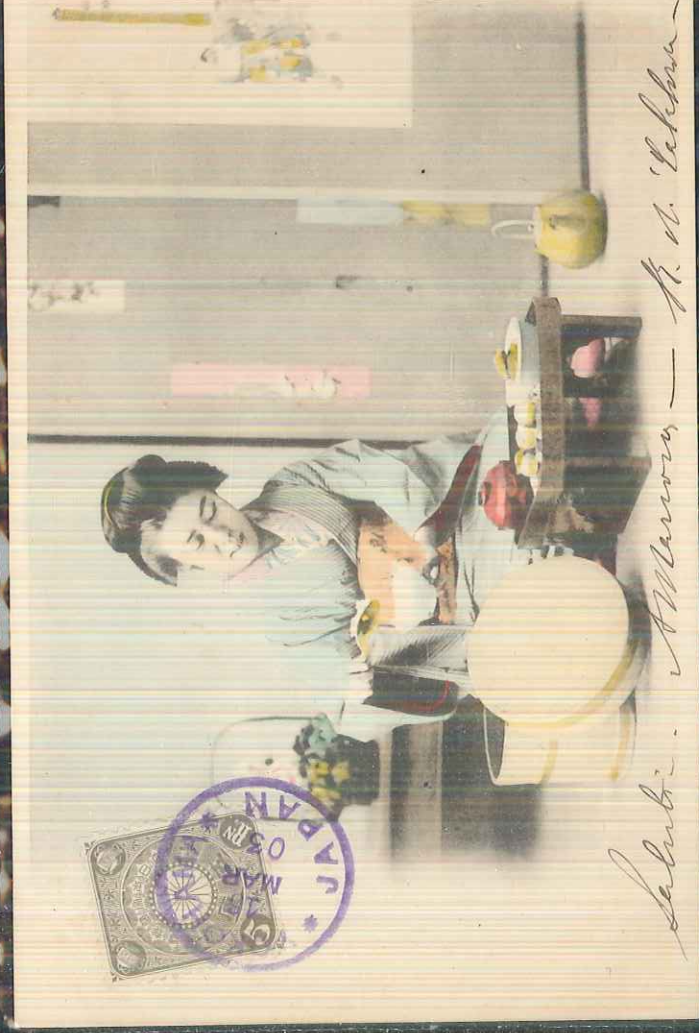
Nagasaki 3 aprile 1902.  
Eleggio Sig. Cantor,  
La furga gradiva i miei rispettos.  
saluti

Leo Du  
L. Botte



Musica i miei libri a quella delle  
Ghote.  
A. Marconi

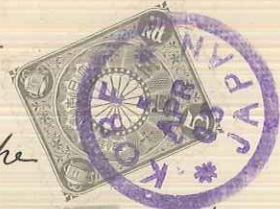
T. v. Sakai.



Salute. A. Marconi - T. v. Sakai



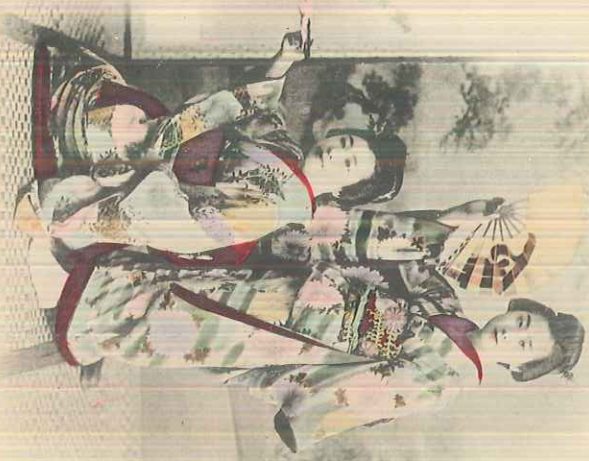
Senti le guise  
per i saluti  
suv'icchi che



contucambis.

Le mai nipetto  
le ottigni al  
ly. Con anclante  
e puzandole

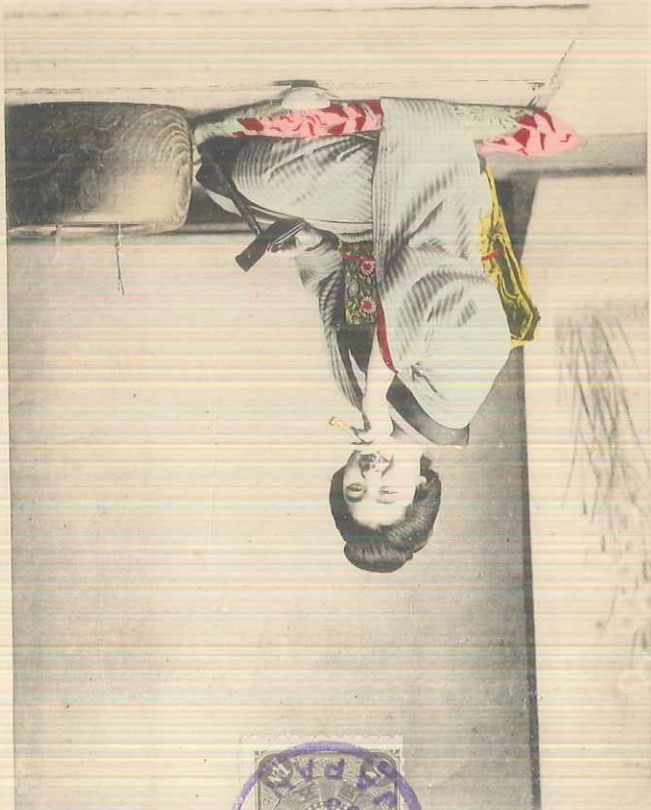
di accettare  
una  
stetta de  
mano  
m'icchi  
Dei  
Amore



John - Amore



John - Amore  
de, of at, w. hant:  
John - Amore  
Mogayuki 1. 3. 18  
3 April 1902.



John - Amore



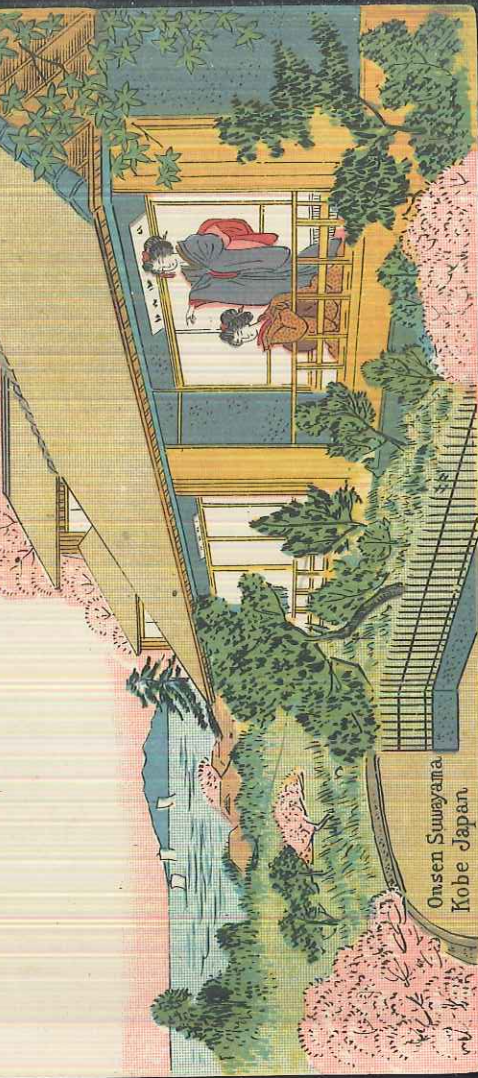
Kobe 14 giugno 902.

La puzza per dove i miei fratelli  
Su Su:  
S. 600 to.



Sakuranomiya Osaka Japan

Kobe 14 giugno 902.  
La puzza i miei fratelli  
Su Su:  
S. 600 to.



Onsen Suwayama  
Kobe Japan

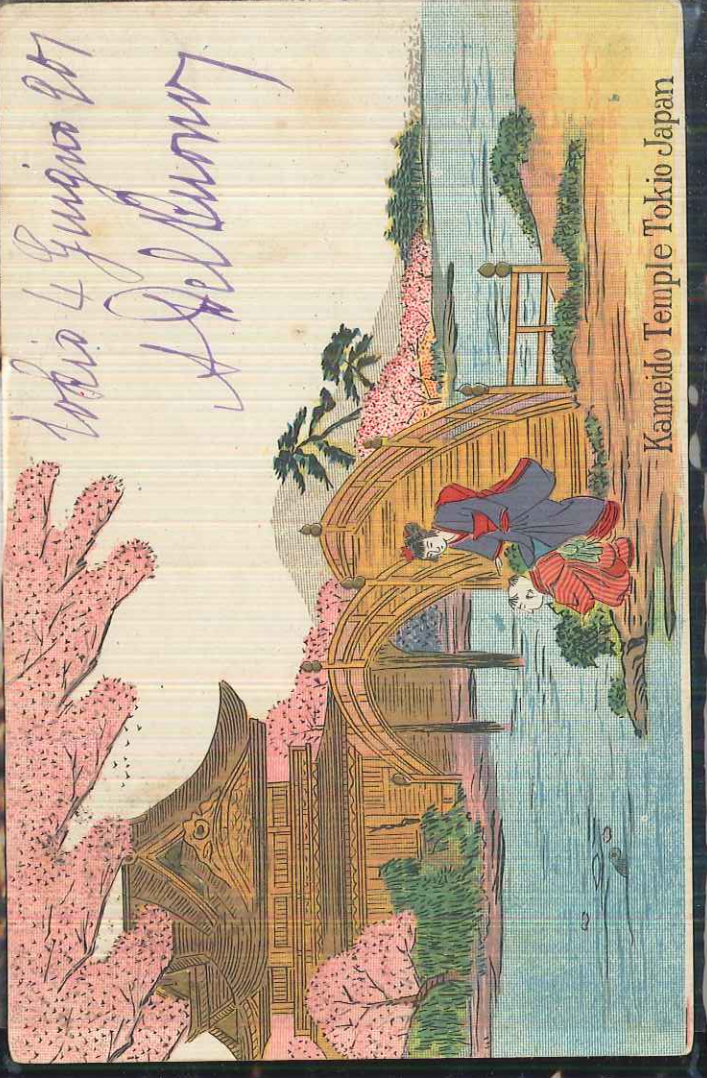
Kobe 14 giugno 902

Epigra di: Antena,  
La puzza gradine i miei  
Su Su:  
S. 600 to.



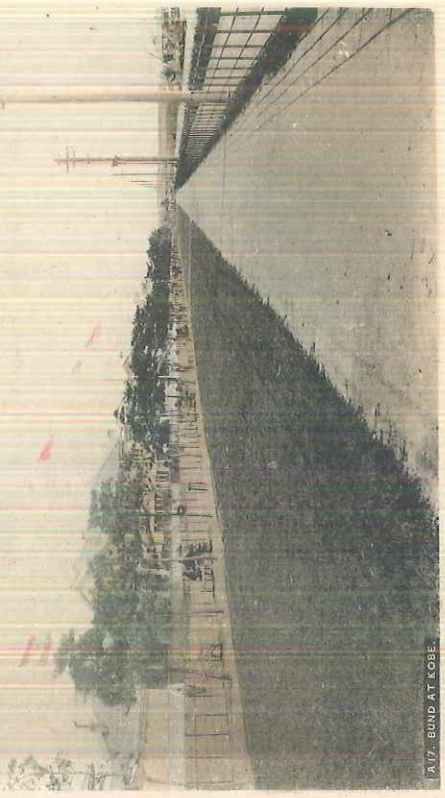
Atago Kyoto Japan  
Temple

Kobe 14 giugno 902  
A Del Duomo



Kameido Temple Tokio Japan

Kobé 37900002  
 Shukki a katti  
 Nat. Div.  
 1. Bothe.



A 17. BOND AT KOBE



3 BENTEN DORI AT YOKOHAMA

Yokohama 15 4 quils 902.  
 Egruysa dy e condeson  
 syho gradivie r'ap'et'at'p. salut. Des  
 Div. Lino  
 1. Bothe.

Flourance, 9 Mai 99.

C'est très curieux  
 que l'on vous fasse  
 payer une surtaxe  
 partout on vous  
 ally, tandis que  
 l'ai des correspon-  
 dantes à Venise, à  
 Florence, à Milan  
 à Gènes, à Rome etc.



qui n'en paient jamais!  
 C'est ici je suis obligé de W. en envoyer une de La Chine, peut être  
 n'en avez - vous pas encore? Salutations empressées  
 Flourance.

Kobé 47900002.  
 Egruysa dy e condeson  
 Nat. Div.  
 1. Bothe.



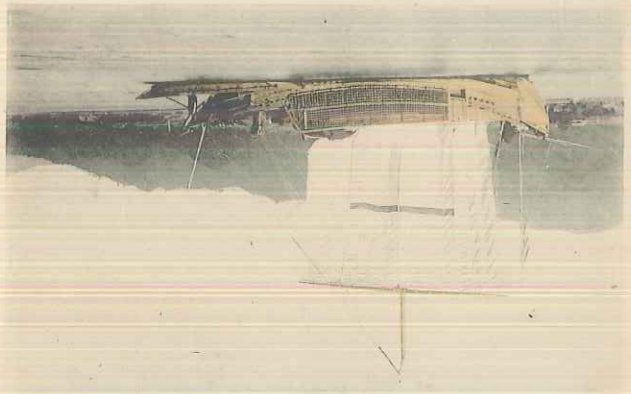


Yokohama 15 aprile 902,  
 Egregia Sig.<sup>ta</sup> Caterina,  
 Le pugo gradire i miei rispetti  
 salutari

Suo dev.<sup>o</sup>  
 I. Botte.



*Mamma*  
*Luca*



Tokio 9 giugno 902  
 Egregia Sig.<sup>ta</sup> Caterina,  
 mando a lei ed  
 al. ed ai bambini  
 salutari cordiali  
 Suo dev.<sup>o</sup>  
 I. Botte.

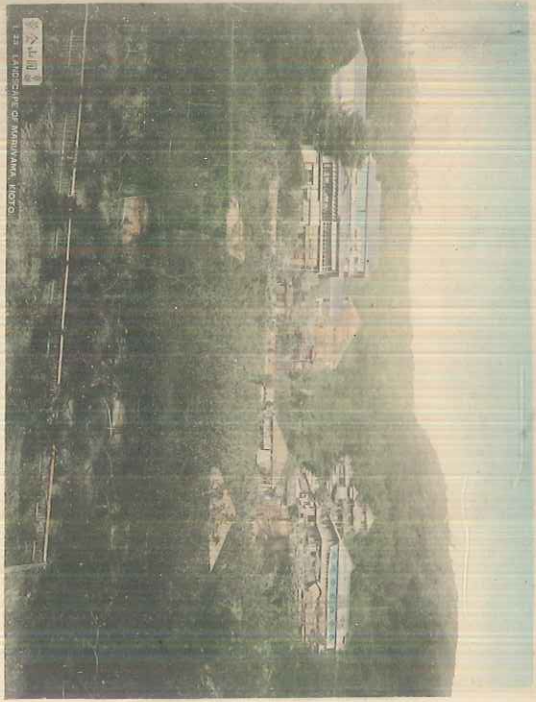




A-447. MIIDERA TEMPLE OTSU



Saluti  
Marrows

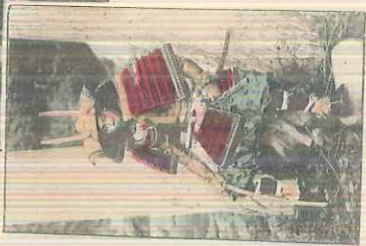
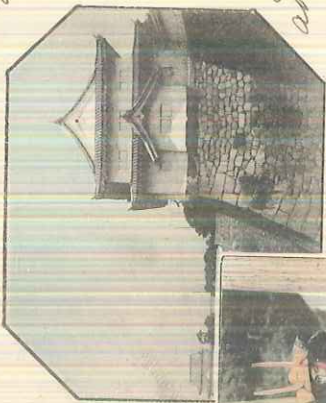


LA FAUCILLE DE MITSUBISHI PHOTO

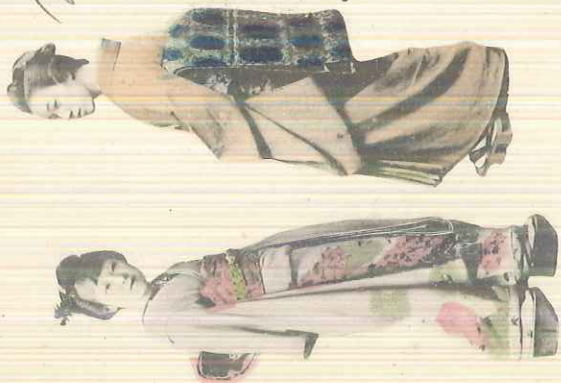
Miyoto hotel  
Kioto Yagu no goz  
Egyre fig. Cantons,  
de Sugo gradis  
i miei plati  
Las Dr.  
I. Booth

Miyoto hotel  
Kioto Yagu no goz  
Egyre fig. Cantons,  
appellati saluti a lui,  
ad al ed ai bambini

Las Dr.  
I. Booth



Miyoto hotel  
Egyre fig. Cantons,  
Saluti per se, per  
almanus + per i bambini.  
-mi  
Las Dr.  
I. Booth

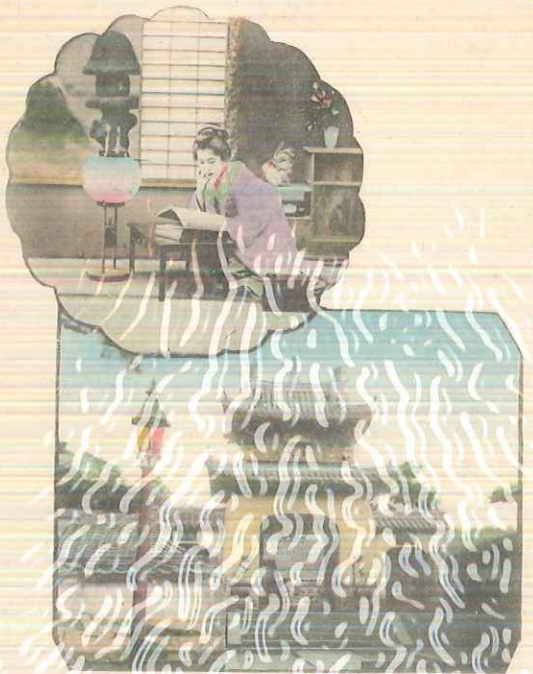




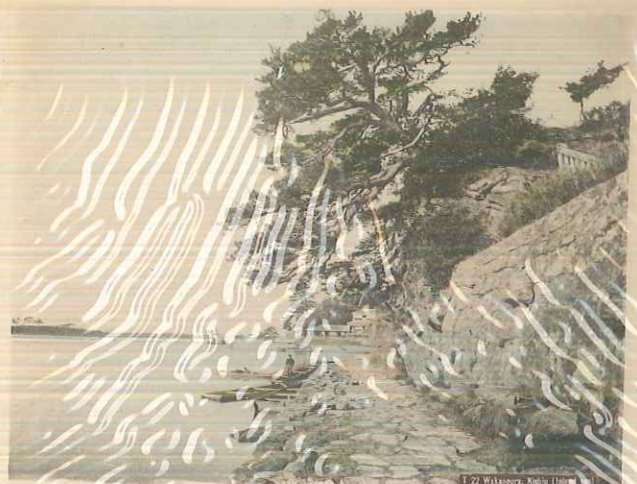
Nagasaki 15 aprile 902.  
 Egregia Sign. Contessa  
 gradisca saluti dal  
 Suo  
 S. Botthi.



Nagasaki 2 aprile 902  
 Egregia Sign. Contessa  
 Mamma Veluti e  
 Mio, ad Ol, ai  
 figliuoli.  
 Suo Suo.  
 S. Botthi.



Nagasaki 3 aprile 902.  
 Egregia Sign. Contessa,  
 Voglia gradisca i miei  
 saluti. Suo Suo.  
 S. Botthi.



Nagasaki 3 aprile 902  
 Egregia Sign. Contessa.  
 Gradisca per la  
 famiglia i miei  
 saluti.



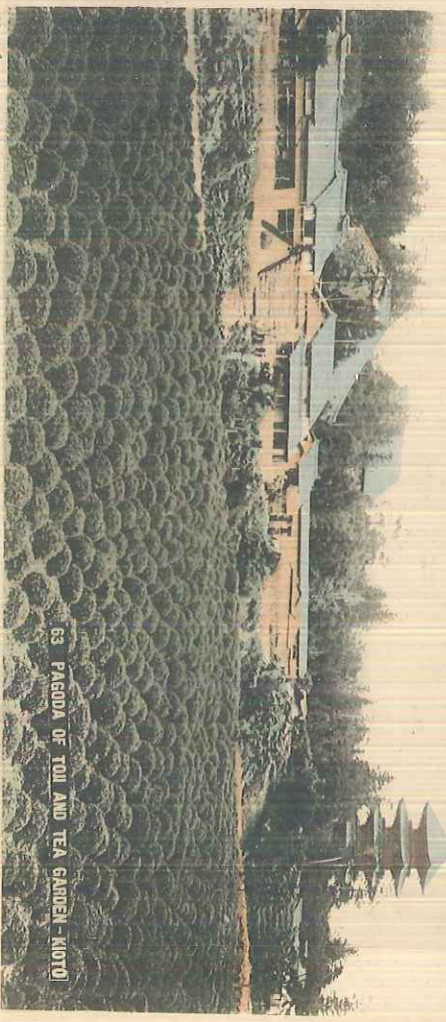
Suo  
 S. Botthi.



55. TORIJI, BUNDOJI & MUSEUM AT TOKYO

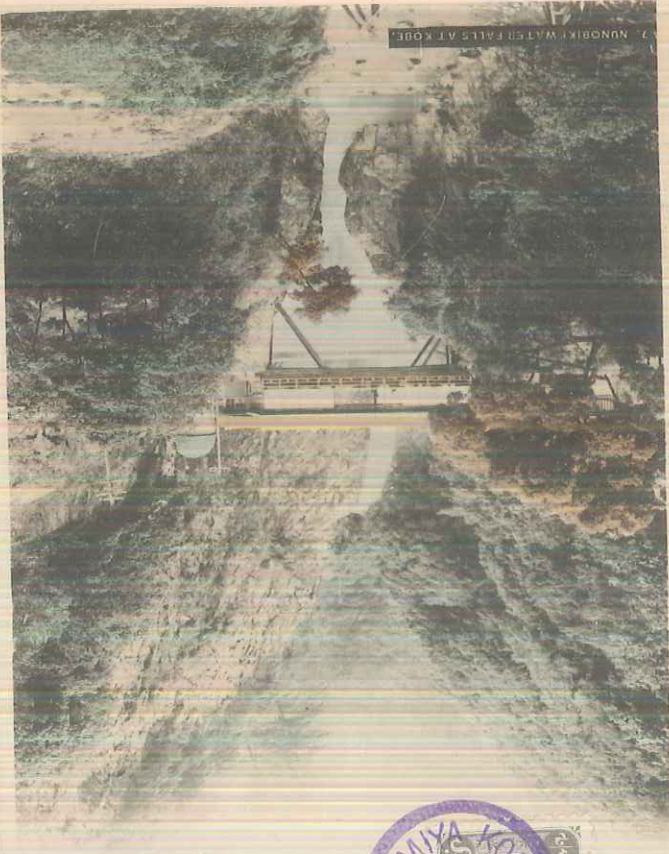


Salute.  
 A. M. Brown  
 H. W. Calabrese



63. PAGODA OF TOLI AND TEA GARDEN - KIOTO

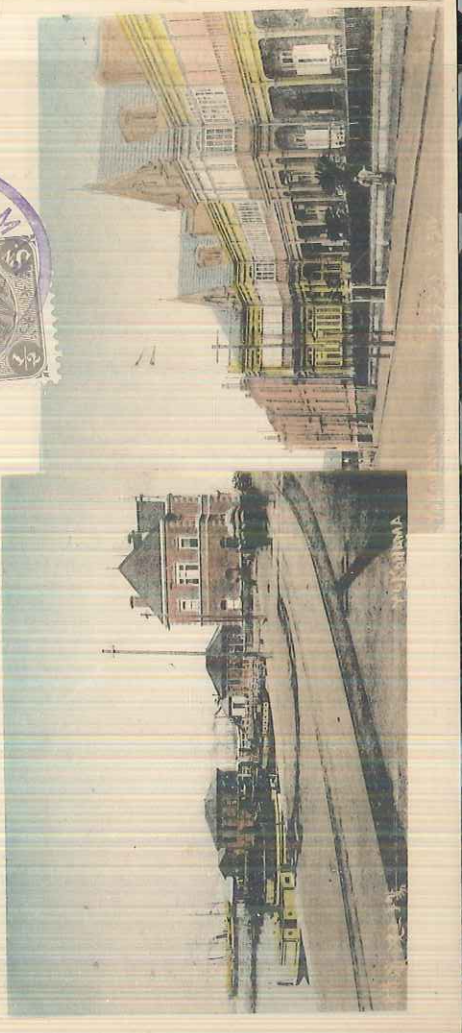
Kobe Springs 1903.  
 given to the U.S. Government by the U.S. Navy.  
 a letter to accompany it. Same value.  
 1.000 Y.



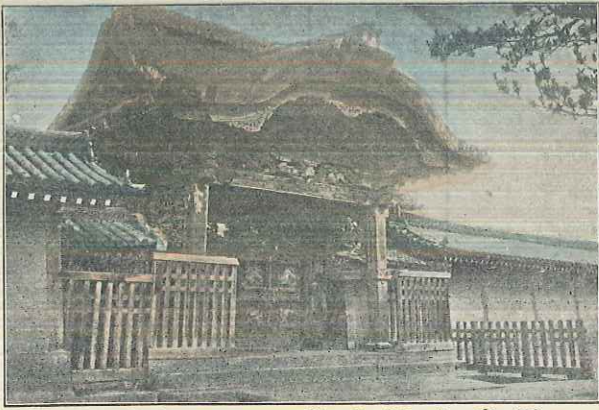
7. NUNOBIKI WATER FALLS AT KOBE.



Salute  
 A. M. Brown



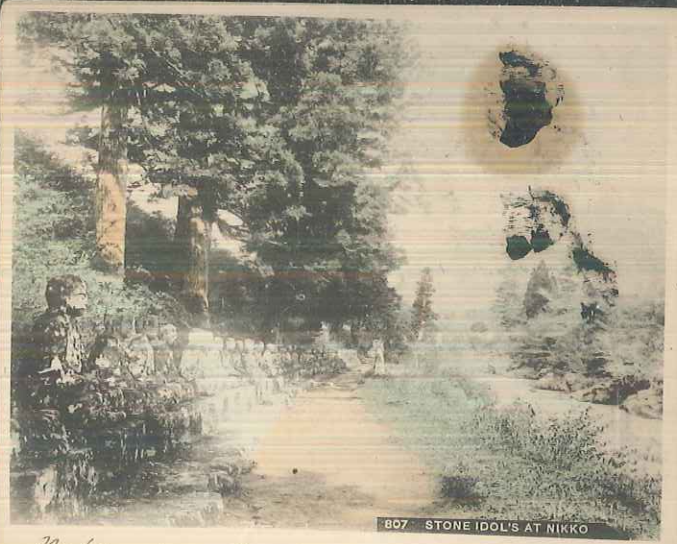
Salute.  
 A. M. Brown



製厚志京東 門寺願本京西



Saluti a Hakodate -  
Amoureux  
 N. V. C. Botte



807 STONE IDOL'S AT NIKKO

Nikko 14 Aprile 1902,  
 Eugie fig: Contessa,  
 A lei, ad al, ai bambini saluti

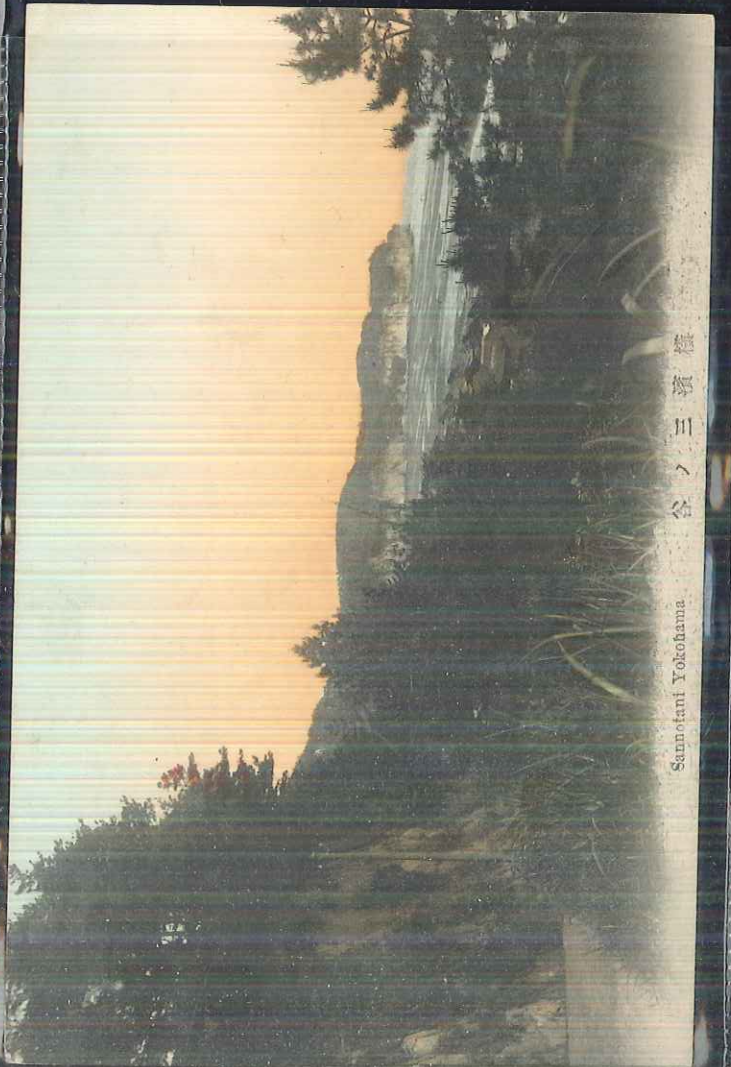
Del Sw:  
 P. Botte.



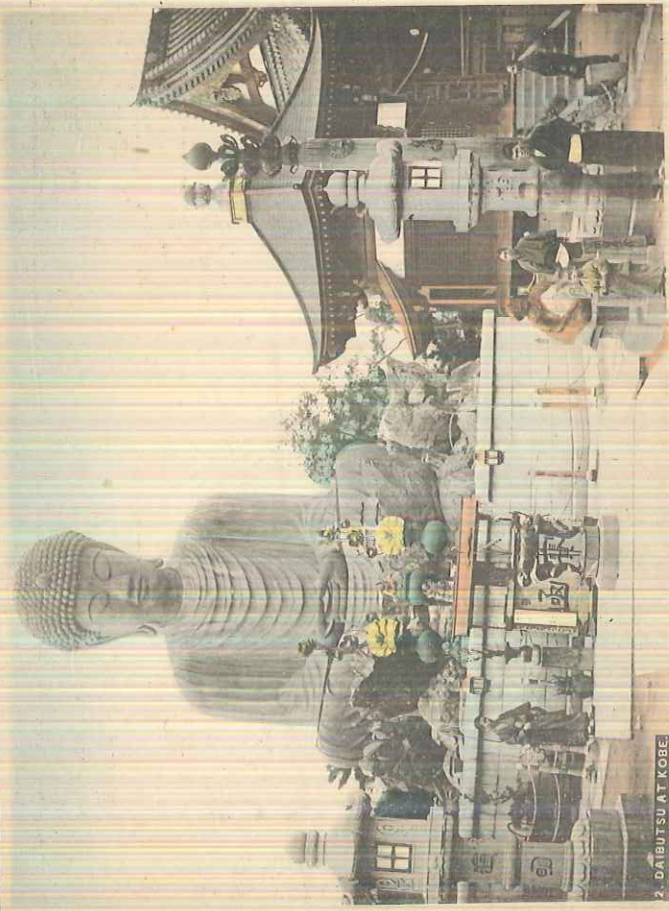
M. G. Yokohama 15 Aprile 1902  
 Eugie fig: Contessa,  
 Saluti a i parenti. Del  
 Leo Sw:  
 P. Botte.



MOSE HILL, YOKOHAMA

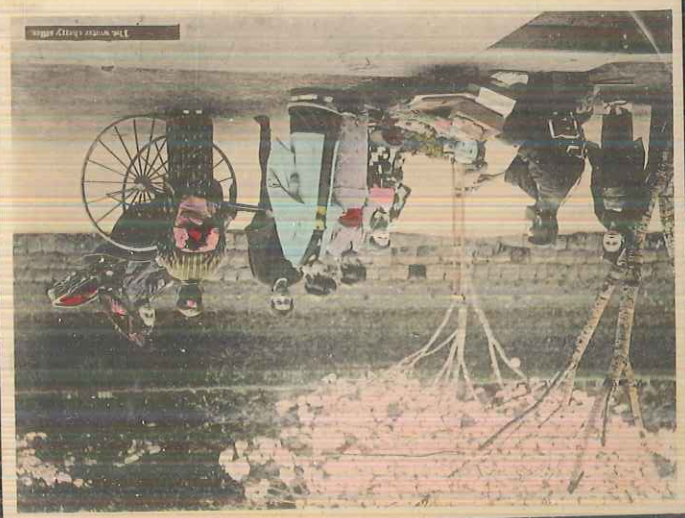


Sannokani Yokohama 三ノ宮

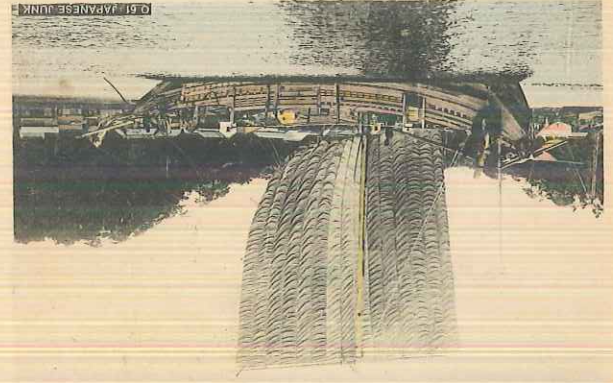


Kobe 4 giugno 92.  
 con molto gusto per chi.  
 1.30 fr.

Kobe 4 giugno 92.  
 Espone ogg. cultura,  
 da poco per dire  
 i mini, pluri e  
 proutati e sempre  
 ad al. ed ai bene  
 -bene  
 Loro Su.  
 1.30 fr.

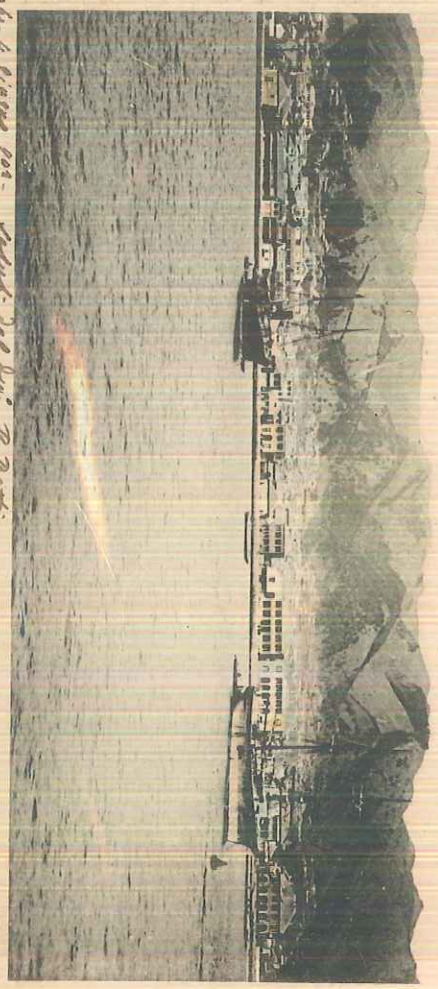


Magogahe 3 aprile 92  
 Espone ogg. cultura,  
 da poco per dire  
 i mini, pluri e  
 proutati e sempre  
 ad al. ed ai bene  
 -bene  
 Loro Su.  
 1.30 fr.



Kobe 4 giugno 92.  
 Espone ogg. cultura,  
 da poco per dire  
 i mini, pluri e  
 proutati e sempre  
 ad al. ed ai bene  
 -bene  
 Loro Su.  
 1.30 fr.

Yokohama Japan - March 20th 1862



Yokohama Japan  
12 APR 62  
Mr. J. B. ...  
No. 10 ...  
No. 10 ...  
No. 10 ...



Salute  
J. M. ...



Yokohama Japan

