

SARAWAK

Revenue 'overprints', 20 mm. oval.



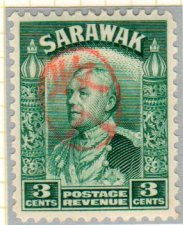
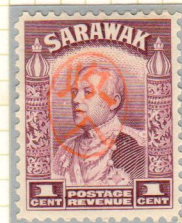
SARAWAK

Revenue 'overprints', 20 mm oval.



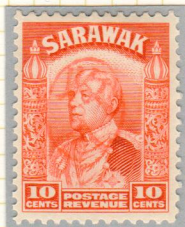
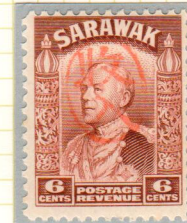
SARAWAK

Revenue 'overprints', 14 mm oval, 10 mm wide.



SARAWAK

Revenue 'overprints', 14 mm oval, 10 mm wide.



Revenue 'overprints'. 14 mm oval, 10 mm wide.



Revenue 'overprints', 14 mm oval, 10 mm wide.



SARAWAK

Revenue 'overprints', 14 mm oval, 10 mm wide.



Oval  
16 mm  
x 8 mm



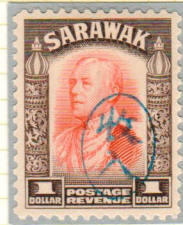
SARAWAK

Revenue 'overprints', 14mm narrow oval, (8mm).



SARAWAK

Revenue overprints, 14 mm narrow oval (8mm).



SARAWAK

Revenue stamp used on receipt.

Uchi ?  
Mura  
Men  
Cotton  
(Textile)  
oyō  
Co.  
Kabū  
shiki  
Ltd.  
Gai  
Sha

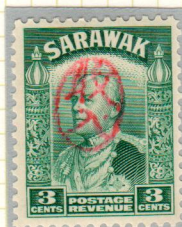


14 mm



# SARAWAK

Revenue 'overprints', 12 mm oval.

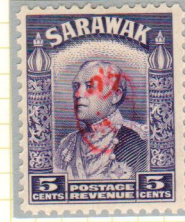


Revenue 'overprints', 12 mm oval.



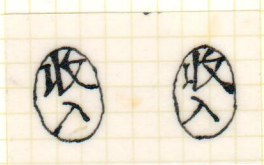
# SARAWAK

Revenue 'overprints', 12 mm oval.



SARAWAK

Revenue 'overprints', 12mm oval.

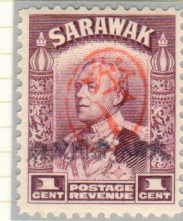
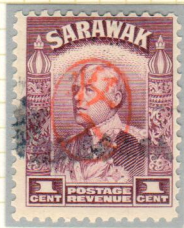


"Received inwards"

SARAWAK

Revenue 'overprints' with single-line  
"Dai Nippon Teikoku Seifu"

Possibly 'Postage Due' use.



SARAWAK

Fiscal use, by

OFFICER IN CHARGE / UPPER SARAWAK

