

GREAT BRITAIN

MACHIN DECIMALS

10P. BOOKLET PANES



PERF. J
1/2. NECK FLAW



PERF. LR.



PERF. LS.



PERF. J
1/2 P. SHIFT DOWN



PERF. L.R.
1/2 P. SHIFT UP



PERF. LS.
HORZ. S/T SHIFT

GREAT BRITAIN

MACHIN DECIMALS

ONE CENT. BAND

25 P. BOOKLET PANES



6/71. PERF. K.

2/2. RED LINE THROUGH SMALL 2



4/71. PERF. L.R.



10/71. PERF. L.S. BLIND



10/72. PERF. K. BLIND

GREAT BRITAIN

MACHIN DECIMALS

ONE CENT. BAND

50 P. BOOKLET PANES



5/71. PERF. K.



PERF. L.R.



8/71. PERF. L.S.



11/71. PERF. L.S. BLIND
1/2 - 2/2. WHITE VERTICAL SCRATCH
RIGHT EDGE.

GREAT BRITAIN

MACHIN DECIMALS

ONE CENT. BAND

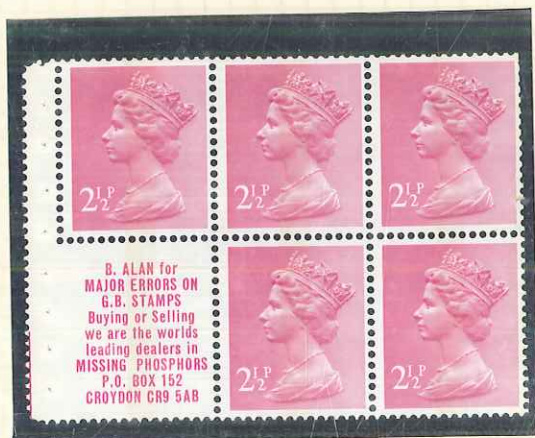
25P. BOOK



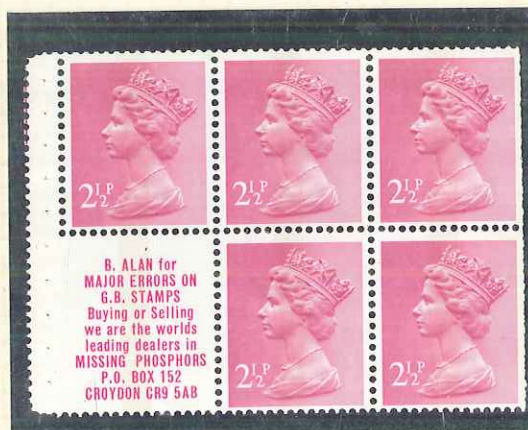
12/72 (s). PERF. L.R. BLIND



2/72. PERF. L.S. BLIND
2/3 NOSE TIP FLAW



8/72. PERF. M. BLIND



4/72. PERF. M. BLIND
1/2. RETOUCH BEHIND EAR

GREAT BRITAIN

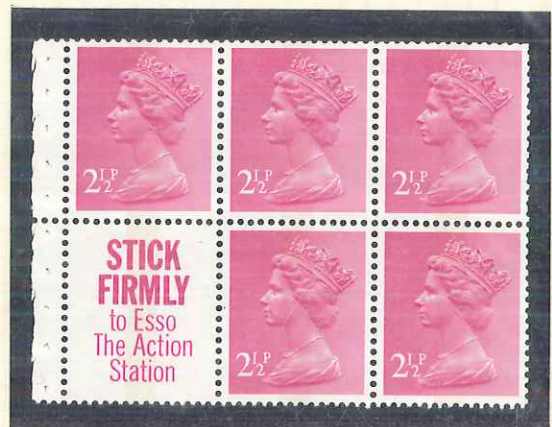
MACHIN DECIMALS

ONE CENT BAND

2½P. BOOKLET PANES



6/71. PERF. K.



4/71. PERF. L.R.



10/11. PERF. L.S. BLIND



10/72. PERF. K. BLIND

DOUBLE STITCH

GREAT BRITAIN

MACHIN DECIMALS

ONE CENT. BAND

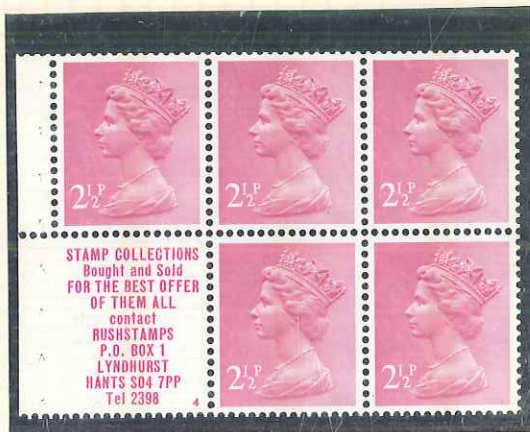
50 P. BOOKLET PANES



11/72. PERF. K. BLIND



5/73. PERF L.R. BLIND



2/73. PERF. L. S. BLIND



PERF. L. S. BLIND
2/2 HOT BREATH VARIETY

GREAT BRITAIN

MACHIN DECIMALS

ONE CENT. BAND

25P. BOOKLET PANES



8/72. PERF. L.R. BLIND



2/72. PERF. L.S. BLIND



8/72. PERF. M. BLIND
1/2. RETOUCH OVER 'BIG 2.'



4/72. PERF. M. BLIND
1/3. HOOKED BASE SERIF TO 'P'

GREAT BRITAIN

MACHIN DECIMALS

50 P. BOOKLET PANES

3P. TWO BANDS



5/71. PERF. K.

2½ P. DOWN

2½P. LEFT BAND



5/73. PERF. L.R.

2½ P. UP



2/73. PERF. L.S.

2½ P. DOWN.



12/72. PERF. M.

2½ P. DOWN

GREAT BRITAIN

POSTAL STATIONERY

**REGISTERED
LETTER
RECOMMANDÉ**




For official
Registration
label

This letter must be handed
to a Post Office official
and a receipt obtained

See note on
back for details
of compensation

**FORCES OVERSEAS
REGISTERED
LETTER
RECOMMANDÉ**



For official
Registration label.

This letter must be handed
to a Post Office official
and a receipt obtained

Registration fee paid
p

GREAT BRITAIN

MACHIN DECIMALS

3P. TWO BANDS

50 P.

2½P. LEFT BAND



11/72. PERF. K
1/1. FOREHEAD RETOUCH
2/1. DIAGONAL BLUE LINE-SHOULDER



11/71. PERF. L.S.
1/3. MISSING SERIF TO SMALL 2
3P. HORIZ. LINES THINNER



8/72. PERF. L.S.
2½P. SHIFT UP



8/72 PERF. L.S.
2½P. SHIFT DOWN

GREAT BRITAIN

MACHIN DECIMALS

TWO BANDS

50 P. BOOKLET PANES



2/72. PERF. K.



5/72 PERF. L.R.



8/72. PERF. L.S



8/71. PERF. M
1/1. NECK RETOUCH

GREAT BRITAIN

MACHIN DECIMALS

30 P. BOOKLET PANES



6/71. PERF. L.R.
2/2 WHITE PEARL IN EAR RING



8/72. PERF. K. BLIND



PERF. L.R. BLIND



4/72 PERF. L.S. BLIND

GREAT BRITAIN

MACHIN DECIMALS

30P. BOOKLET PANES



6/72. PERF. M. BLIND
1/1. DRESS RETOUCH TH. G/3.
2/2. MISSING PEARL



2/71. PERF. L. R.
HORIZONTALS OF VALUE THINNER
2/2. CHEEK RETOUCH TH. D. E/3.



PERF. L. R.
1/2, 3. NUMBER OF WHITE PATCHES



12/72S. PERF. L. S. BLIND
2/2. SLANTING DARK LINE
L. BOTTOM TO TOP OF STAMP

GREAT BRITAIN



PERF. LSB. PVA. CBAND
50 P. BOOK AUTUMN 73



PERF. MB. DEXTRIN. CBAND
30 P. BOOK SPRING 74



PERF. LSB. PVA. 2 BANDS
35 P. BOOK AUTUMN 73



PERF. J.B. DEXTRIN. CBAND
85 P. BOOK SEPT. 74

GREAT BRITAIN



CYL. NO. B7

2 BANDS

PERF. JB, WITH SINGLE EXTENSION HOLE

DEXTRIN

45P. BOOK 12/74



CYL. NO. B7

2 BANDS

PERF. JB.

DEXTRIN

45P. BOOK 12/74

GREAT BRITAIN

MACHIN DECIMALS

WEDGWOOD BOOKLET PANES

Inland letter rates (and to the Irish Republic and Channel Islands)

Not over	First class	Second class	Not over	First class	Second class
2oz	3p	2½p	14oz	15p	9½p
4oz	4p	3½p	1lb 0oz	17p	11½p
6oz	6p	5p	1lb 8oz	24p	13½p (max)
8oz	8p	6½p	2lb 0oz	34p	
10oz	10p	7½p	Each additional 1lb	17p	
12oz	13p	8½p			

Overseas rates: Air

Europe: for letters and postcards surface rates apply.

Outside Europe

Zone A: N. Africa, Israel, Lebanon and neighbouring countries.

Zone B: Americas, most of Africa, India and neighbouring countries, S.E. Asia.

Zone C: China, Japan, Australasia.

	Zone A	Zone B	Zone C
Letters (per ½ oz)	5p	7½p	9p
Printed papers (per ½ oz)	3p	4p	5p
Postcards	3p	4p	5p
Letter forms	5p; 6½p	5p; 6½p	5p; 6½p

Overseas rates: Surface

Foreign includes Europe except Cyprus, Gibraltar and Malta.

Weight step	Letters		Printed papers	
	Foreign	Commonwealth	Ordinary	Reduced
up to 1oz	5p	3p	3p	1½p
1-2oz	9p	5p	4p	2p
2-4oz	12p	7½p	5p	2½p
4-8oz	30p	10p	8p	4p
8oz-1lb	50p	20p	15p	8p
1-2lb	80p	35p	25p	15p
2-4lb	130p	70p	40p	25p

Postcards to all countries: 3p.

For full details see leaflet or P.O. Guide at any Post Office. These rates apply at time of printing.

Edition date: May 1972.

Advertisement Contractors: Canonsreach Ltd. TEL 01-437-6542



½p. - 2B AND LB., 2½p. - LB.

Some facts about Wedgwood

Josiah Wedgwood was an enthusiastic supporter of the American War of Independence. In 1778 he wrote in a letter to his partner Bentley that he 'blessed his stars and Lord North that America is free'.

The abolition of slavery was another cause which received the active support of Josiah Wedgwood. In 1787 he produced a cameo depicting a slave kneeling in chains with the inscription 'Am I not a man and a brother?' Thousands of these were freely distributed.

Josiah Wedgwood's eldest daughter, Susannah, was the mother of Charles Darwin, the biologist and author of *The Origin of Species*.

Josiah Wedgwood's eldest son John was a founder of the Royal Horticultural Society. His youngest son Thomas became famous as one of the pioneers of photography.



TWO BANDS

GREAT BRITAIN

MACHIN DECIMALS

WEDGWOOD BOOKLET PANES

Some facts about Wedgwood

A first edition copy of the Portland Vase made in the late eighteenth century realised £20,000 at Sotheby's on 30th November 1971 – a world record auction price for an English ceramic.

Josiah Wedgwood paid the third Duke of Portland £100, a handsome hiring fee in those days, for the loan of the Barberini (or Portland) vase in order to model his famous Jasper reproductions.

Josiah Wedgwood equipped dairies with his ceramic products – from the tiling for the walls to settling pans for the cream.

In 1784 Wedgwood made a Jasper chess set. Flaxman the artist used Sarah Siddons as his model for the Queen.

It is recorded that Catherine the Great paid just over £2,700 for her 952-piece Wedgwood dinner and dessert service.



2½ P. - CB. AND RB.

Some facts about Wedgwood

A first edition copy of the Portland Vase made in the late eighteenth century realised £20,000 at Sotheby's on 30th November 1971 – a world record auction price for an English ceramic.

Josiah Wedgwood paid the third Duke of Portland £100, a handsome hiring fee in those days, for the loan of the Barberini (or Portland) vase in order to model his famous Jasper reproductions.

Josiah Wedgwood equipped dairies with his ceramic products – from the tiling for the walls to settling pans for the cream.

In 1784 Wedgwood made a Jasper chess set. Flaxman the artist used Sarah Siddons as his model for the Queen.

It is recorded that Catherine the Great paid just over £2,700 for her 952-piece Wedgwood dinner and dessert service.



MARGIN BETWEEN 2½ P AND 3P WIDER BY $\frac{1}{4}$ mm

GREAT BRITAIN

NORTHERN IRELAND

REGIONAL ISSUE

WMK. CROWNS

PERF : 15X14

ORDINARY



18-8-58



7-2-66



29-9-58



29-9-58

PHOSPHOR



CB. 9.6.67



2B. 10-67



2B. 1-3-67



2B. 1-3-67

NO WMK.

CHALKY PAPER

PVA. GUM.



2B. 27-6-68



CB. 4.9.68



CB. 26-2-69



2B. 4.9.68



2B. 20-5-69

GREAT BRITAIN

SCOTLAND

1967-70

NO WMK.
PVA. GUM

TWO BANDS
PERF : 15X14

CHALKY PAPER



28.11.67



CB. 4.9.68



CB. 26.2.69



16.5.68



4.9.68



28.9.70



12.12.68

PHOSPHOR OMITTED



GREAT BRITAIN

WALES AND MANMOUTHSHIRE

ORDINARY

WMK. CROWNS

PERF : I XI



18.5.58



7.2.66



29.9.58



29.9.58

PHOSPHOR TWO BANDS



CB. 16.5.67



10.67



1.3.67



1.3.67

NO WMK.

CHALKY PAPER
2 BANDS

PVA. GUM



21.6.68



CB 4.9.68



CB. 26.2.69



P. OMITTED



6.12.67



4.9.68



1.8.69

GREAT BRITAIN

ISLE OF MAN

REGIONAL ISSUE

WMK. CROWNS

PERF : 15X14

ORDINARY



8-6-64



15-8-58



7.2.66

PHOSPHOR



CB. 27.6.68



2B. 5.7.67

NO WMK.

CHALKY PAPER

PVA. GUM



2B. 24.6.68



CB. 4.9.68



CB 26-2-69



2B. 4.9.68

GREAT BRITAIN

GUERNSEY

REGIONAL ISSUE

WMK. CROWNS

PERF : 15 X 14

ORDINARY



8-6-64



5-7-62



7-2-66

PHOSPHOR



CB. 24-5-67



2B. 24-10-67

NO WMK.

CHALKY PAPER

PVA. GUM



2B. 14.4.68



CB. 4.9.68



CB. 26-2-69



2B. 4-9-68

GREAT BRITAIN

JERSEY

REGIONAL ISSUES

WMK. CROWNS

PERF: 15 X 14

ORDINARY



8-6-64



23-9-62



7-2-66

PHOSPHOR



CB. 9.6.67



2B. 5.9.67

NO WMK.

CHALKY PAPER

PVA. GUM



CB. 4.9.68



CB. 26.2.69



2B. 4.9.68

GREAT BRITAIN

POSTAGE DUE STAMPS

1959 - 63.

WMK. CROWNS
SIDWAYS

PERF : 14 X 15



GREAT BRITAIN

POSTAGE DUE DECIMALS

1970 - 71

NO WMK.

PERF : 14X15

CHALKY PAPER



GREAT BRITAIN

ULSTER PAINTINGS

DECIMAL CURRENCY

TWO BANDS

16 JUNE 1971

STUART ROSE



PHOS. OMITTED

LITERARY ANNIVERSARIES

TWO BANDS

28 JULY 1971

ROSALIND DEASE



PHOS. OMITTED

GREAT BRITAIN

NOTABLE ANNIVERSARIES

TWO BANDS

25 AUGUST 1971

F. WEGNER



PHOS. OMITTED

CHRISTMAS

13 OCTOBER 1971



C B



PHOS. OMITTED

GREAT BRITAIN

BRITISH ARCHITECTURE

MODERN UNIVERSITY BUILDINGS

22 SEPTEMBER 1971

PERF: 15 X 14
TWO BANDS

DES: N. JENKINS
CHALKY PAPER



UNIVERSITY COLLEGE OF WALES



SOUTHAMPTON UNIVERSITY



LEICESTER UNIVERSITY



ESSEX UNIVERSITY



PHOS. OMITTED



PHOS. OMITTED

GREAT BRITAIN

BRITISH POLAR EXPLORERS

16 FEBRUARY 1972

PERF: 14X14½
2 BANDS

DES: M. SAYNOR
CHALKY PAPER



SIR JAMES CLARK ROSS



SIR MARTIN FROBISHER



HENRY HUDSON



CAPT. SCOTT

GREAT BRITAIN

POLAR EXPLORERS

16 FEBRUARY 1972



EXPLORER'S NAME
INDISTINCT



THIN VERTICAL TO
'P.' TH. L/3



FOREHEAD SCRATCH
TH. E/4-6



VERTICAL OF 'P'
CORRECTED TH. L/3



SRUR TO 'S' TH. H/I
BULGE TO 'P' TH. L/3



PHOS. OMITTED

GREAT BRITAIN

NOTABLE ANNIVERSARIES

TWO BANDS

26 APRIL 1972



MISSING PEARL
IN NECKLACE



BROADCASTING ANNIVERSARIES

TWO BANDS

13 SEPTEMBER 1972



GREAT BRITAIN

BRITISH CHURCH ARCHITECTURE

21 JUNE 1972

PERF: 14 X15

TWO BANDS

DES: R.MADDOX

CHALKY PAPER



ESSEX



NORTHANTS



NORFOLK



LINCS



SOMERSET



PHOS. MISSING

GREAT BRITAIN

CHRISTMAS - 1972

18 OCTOBER 1972

PERF : 14 X 15
2½ P. CENT. BAND
OTHERS - TWO BAND

DES : SALLY STIFF
PHOTOGRAVURE AND
PART EMBOSSED
CHALKY PAPER



QUEEN'S RIBBON BROKEN



FLAT TOP TO BIG 2



ANGEL HOLDING
TRUMPET



ANGEL PLAYING
LUTE



ANGEL PLAYING
HARP

GREAT BRITAIN

ROYAL SILVER WEDDING

20 NOVEMBER 1972

3P. ALL OVER
20P. NO PHOS

J. MATTHEWS
FROM PHOTO BY
N. PARKINSON

REEL PRINTING



SHADE CHANGE



GEMINI SHEET PRESS
TEAR DROP VARIETY



CHIN & THROAT
LINE



FLAW UNDER
PRINCE'S EYE

GREAT BRITAIN

BRITAIN'S ENTRY INTO EUROPEAN COMMUNITIES

3 JANUARY 1973

PERF : 15 X 14
TWO BANDS

DES: P. MURDOCH



BRITISH TREES

28 FEBRUARY 1973

PERF : 15 X 14
TWO BANDS

DES: D. GENTLEMAN
CHALKY PAPER



OAK

GREAT BRITAIN

BRITISH EXPLORERS

ALL OVER

MISS. M. SAYNON

18 APRIL 1973



STRAIGHT
LOOK



SIDE LOOK



SIDE LOOK



STRAIGHT
LOOK

GREAT BRITAIN

COUNTY CRICKET

1873 - 1973

ALL OVER

DES: E.M. RIPLEY

16 MAY 1973



LIGHT



DEEP



3 RIBBONS IN
QUEEN'S HEAD

GREAT BRITAIN

BRITISH PAINTERS

ALL OVER

4 JULY 1973

SIR JOSHUA REYNOLDS

SIR HENRY RAEBURN



INIGO JONES

ALL OVER

15 AUGUST 1973



GREAT BRITAIN

COMMONWEALTH
PARLIAMENTARY CONFERENCE

12 SEPTEMBER 1973

