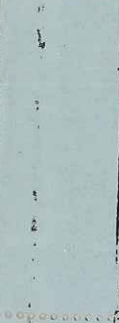
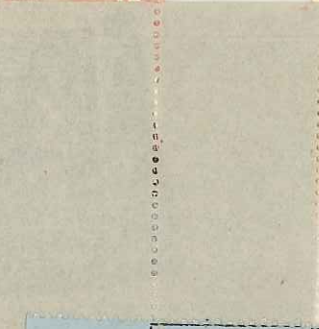


Special
Deliv



F2



F2



F3



F4



F5

F0-7



45 EA

F0-9



45 EA

60 EA

F10-11



45 EA

F12



F13



F14



F 15



F 21-2



F 23 to

F-16
F 18



F 17

F 19



F 27

F 20



82 ER



miscs



44-5



C-1-3

49



H 10



H 19



H 4



H 21



unpaid

H 17



H 22



H 18



825 ea





12/2 CA



17/5 SA



2/2

L 3



L 4



L 5



60-BA



L 6



L 7



25-BA

J14



RA 1-114









AEROS



C 5-6



C 2



C 6 A



C 3-A



CW-14



C68



C17A 100-



40 ea smy ten



C18-2



400 ea



C66















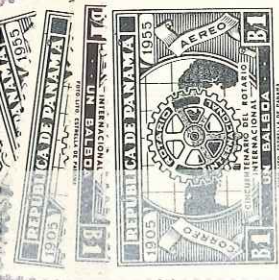












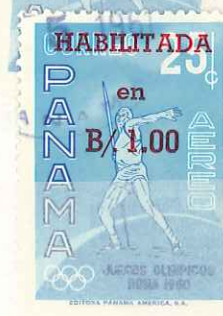












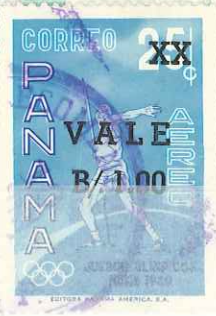


HOMENAJE A LA REPUBLICA



21c

21025



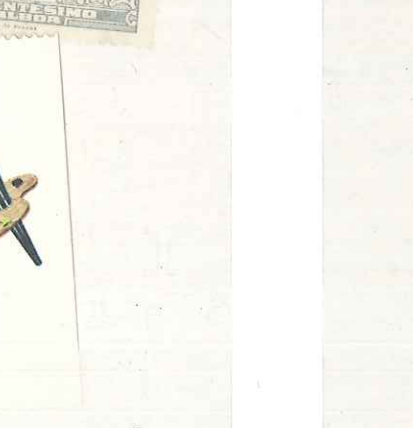












72430

REPUBLICA DE PANAMA

PANAMA

5c

PANAMA

10c



PANAMA

10c PANAMA



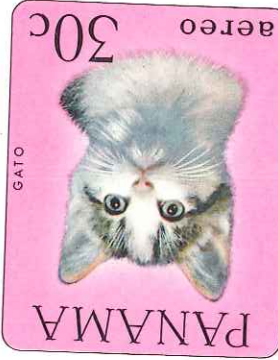
PANAMA

25c

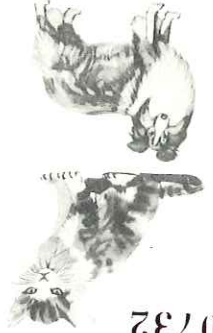
PANAMA



PINTURAS MUNDIALES



ANIMALES DOMESTICOS



0732

REPUBLICA DE PANAMA





REPUBLICA DE PANAMA
TARJETA POSTAL
CONMEMORATIVA

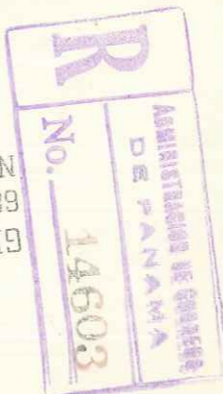


London
Alton P. Bauman
143 Liberty street
New York, N.Y.



Mess
Gebrüder Seufz
Leipzig
Germany

via New York
Messieurs Ködel & fils
Bordeaux



NEW YORK CITY, N. Y.
68 NASSAU STREET
GEORGE HERZOG INC.

A. SCHECKER,
Box 181,
Brooklyn Heights,
Canal Zone

VIA AIR MAIL
CORREO AEREO

REGISTERED



Mr. August Schecker,
c/o Gibbons Company,
343 Columbia Street,
BROOKLYN, New York,
E.U.

35497



BROADWAY STAMP CO.
149 Nassau Street
New York City
U. S. A.



Captain WILLIAM H. PETERS, Engr. Res.
48-29, 58th Lane
Woodside Terrace, L. I., N. Y.

Emisión Conmemorativa
del 150 Aniversario de
la Constitución Americana



Primer Día de Circulación
First Day Cover

PRIMER DIA DE CIRCULACION



R PANAMA
A. P.
No. 71640

MR. F. W. KESSLER
551 FIFTH AVENUE
NEW YORK, N. Y.



1941 HISTORICAL DAY PUENTE DEL MUNDO

Via Air Mail

REPUBLIC of PANAMA

signing of

J. Lustig

THE NEW CONSTITUTION

Box 11, Sta. W
New York, N.Y.

January 2nd 1941

R PANAMA
A. P.
No. 00257

CORREO AEREO



Compañía Especialista del Norte y Sur de El Correo
196 Broadway New York, E. U.S.A.



CORREO AEREO



Elliott M. Walton
80 Nassau Street
New York City

2 DE ENERO DE 1941
PRIMER DIA

R PANAMA
A.P.
No. 00007

EE UU

270

1-7

This paper



(65-67)



(31-)



(25-44)



(60-61)



(60-)



(65-)



(70-)



(30-41)

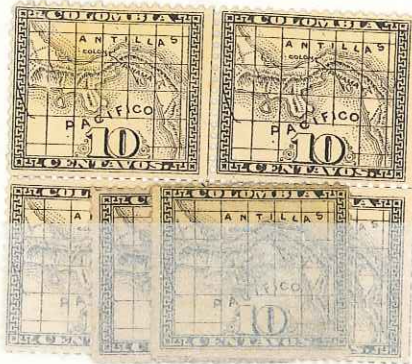
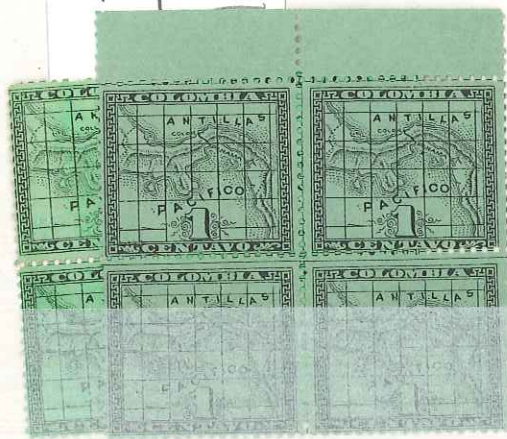
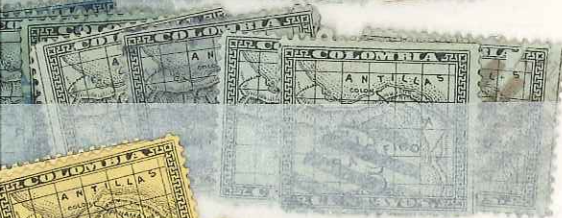


(40-41)

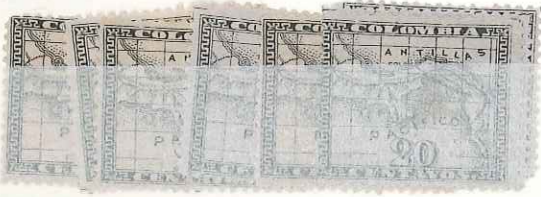
Reprints



a



15-21









51-7



40

58-64



50-64



65-76



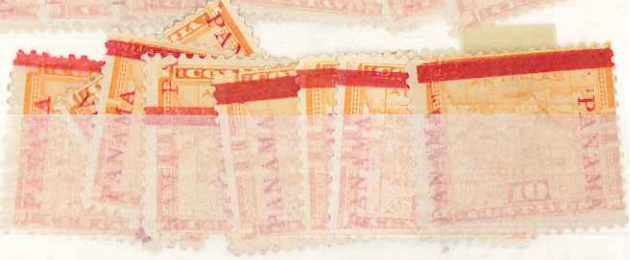
71-5





76.82





101-8



20-



10-



25-



109-
116



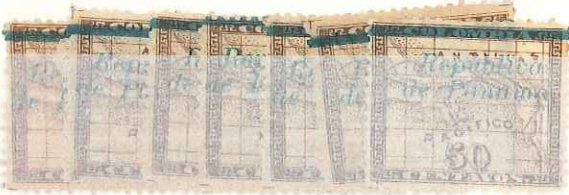
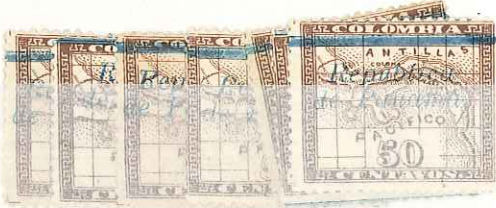
70



129-139



151-7



138



20-



14-



20-



14-



25-

139-200-



10-11



10-11



10-11



50-61



30-61



100-61

155-61



100-61

173-61

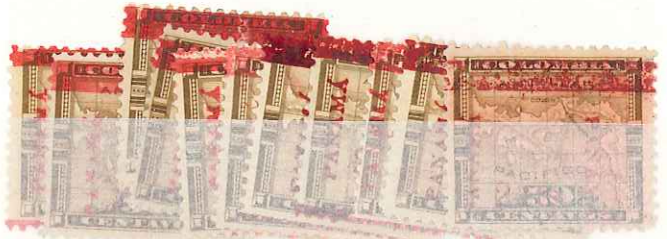


164-61





1814





155-18



195-
201



294-12





30 - En



22 -



40 - En

220 -
231







set 905
EA

234-53





154-55



51 418/51

286
7



260-4





278-87



Set by
A. W. W. 622



288-91





Set of 100
84-01



298-3W

