



13 April 1876,
PARIS/
BELLEVILLE
15c Paris local
letter



1 Jan. 1874
PARIS/BELLEVILLE
+ GC 432
prepaid 40c rate to Germany;
2 January arrival backstamp

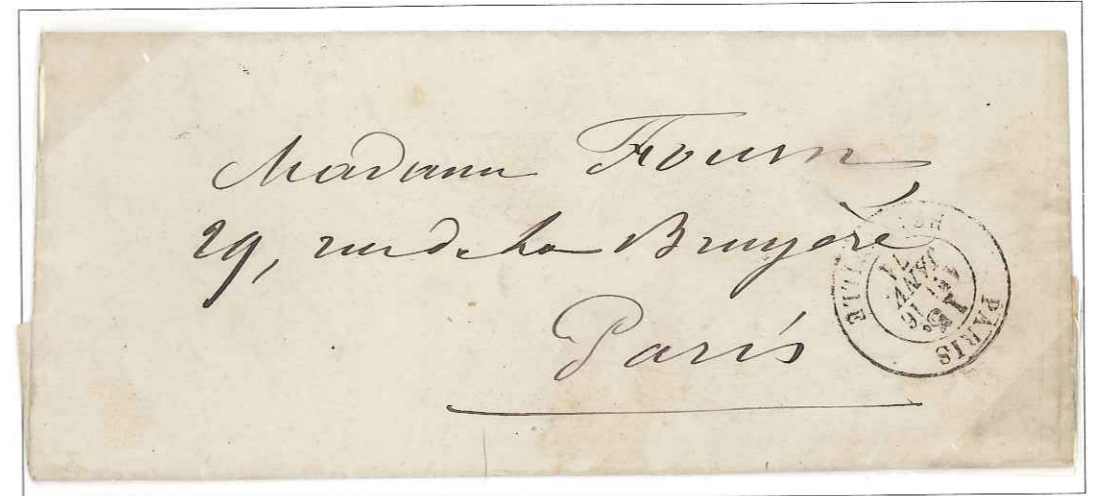
8 April 1878, PARIS-
BELLEVILLE/SEINE
date stamp introduced
after March 1876]



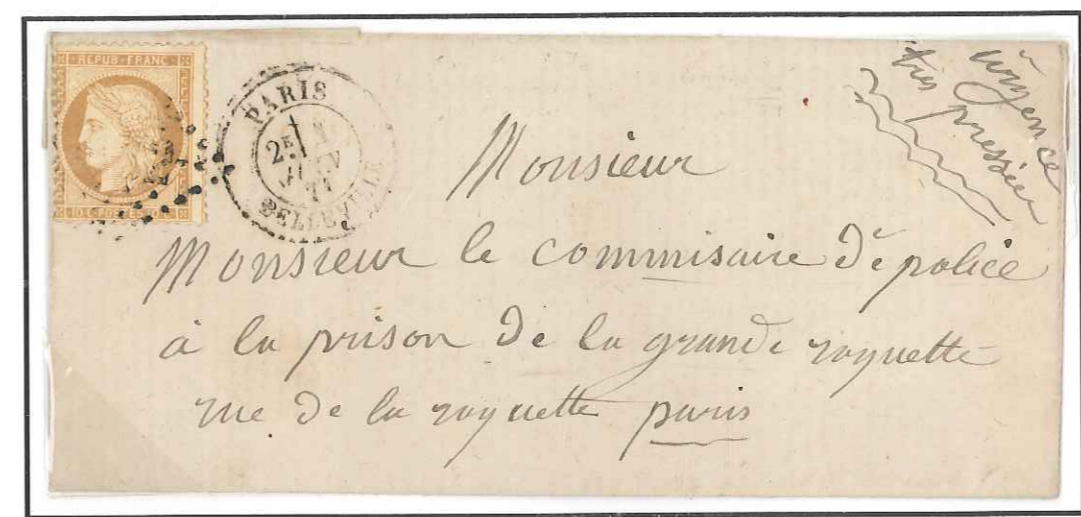
6 Jan. 1877-
10 Jan. 1881 uses



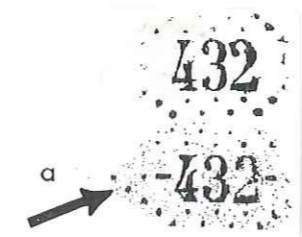
Street name changed to Rue des Pyrénées in 1879. Became Paris 55 in 1881



16 Jan. 1871, PARIS/BELLEVILLE
unpaid, 15c local tax on mail within **besieged Paris**
(1 January 1863 Tariff)



1 June 1871, PARIS/BELLEVILLE + GC 432
to police commissioner at the Prison of the Grande Roquette, Paris,
requesting "urgent" release of a prisoner of the Commune



4 April 1873, PARIS/
BELLEVILLE,
+ reengraved GC 432



Post office moved 1873 to 397, Blvd. de Puebla



15 Nov. 1870, PARIS/BERCY, to Tours

25 November arrival backstamp

flown out of besieged Paris, probably on balloon "Général Uhrich"



27 Jan. 1871, PARIS/BERCY

from soldier in horse infantry [now very much without mounts] in Armée de Paris at Maison Alfort, free-franked to Paris

27 January transit and arrival backstamps

Bercy - 1

Full-service post office opened 1 June 1826, at 80, Grande Rue

PC 367 GC 445



28 June 1855, BERCY/(60) + PC 367

40c 2x domestic letter

(1 July 1854 Tariff)



17 Nov. 1864, BERCY/(60) + GC 445



rare, erroneous (27 Nov. 1865) use of BERCY/(15.c.) tax date stamp on correctly prepaid 1x letter

[+GC 445]

no tax charged



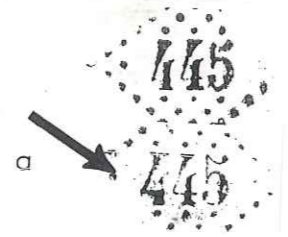
10 May 1873
 PARIS/BERCY
 + PC of GC 445

registered to
 Perpignan; 10 May
 transit and arrival
 back stamps

90c postage
 prepaying 10-20 gm
 letter at 40c
 + 50c registry fee
 (Law of 1 January
 1873, which
 reinstated Registry
 service)

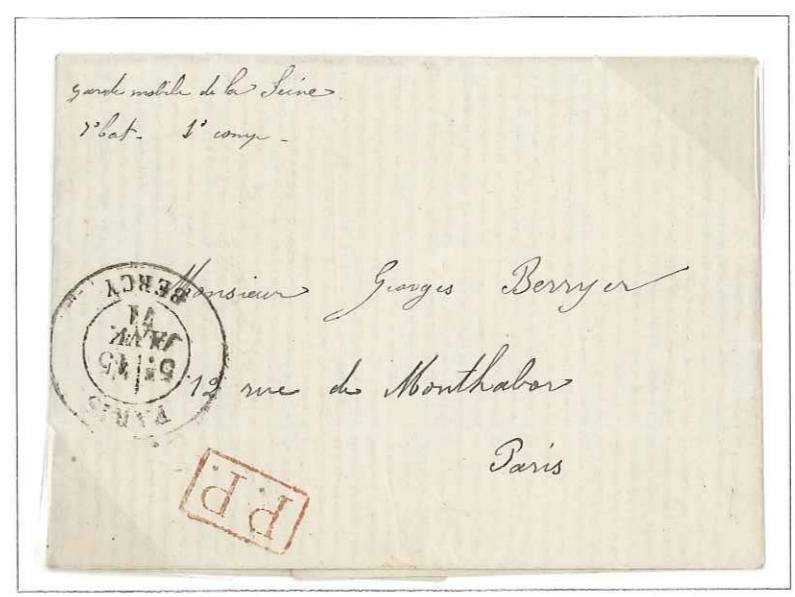
5 Jan. 1874
 1c broken frame line under
 POS of POSTES
 (constant var.)

5c local printed matter
 <50 gm
 (1 January 1874 Tariff)



reengraved 445

15 Jan. 1871, PARIS/BERCY to Paris;
 franchise (boxed P.P.) letter
 from artilleryman in Seine Dept.
 mobile guard at Charenton,
 within Prussian-besieged Paris



16 Feb. 1871, PARIS/BERCY +
 GC 445
 to German-occupied
 Seine-et-Marne Dept.;
 blue 20(c) German tax
**second day of Franco-German
 Convention**
 which required taxation of
 "single-franked" mail

[front only]

30 March 1871,
 PARIS/BERCY
 + blank-center lozenge
 to Marseille;
Paris Commune mail

26 April arrival backstamp,
 after parts of Paris retaken
 by government forces



Bercy - 2

Secondary post office opened in 1879 at 34, Rue Gallois



2 Nov. 1880,
PARIS-BERCY/
R.GALLOIS



7 Nov. 1874,
PARIS/BERCY
+ GC 445

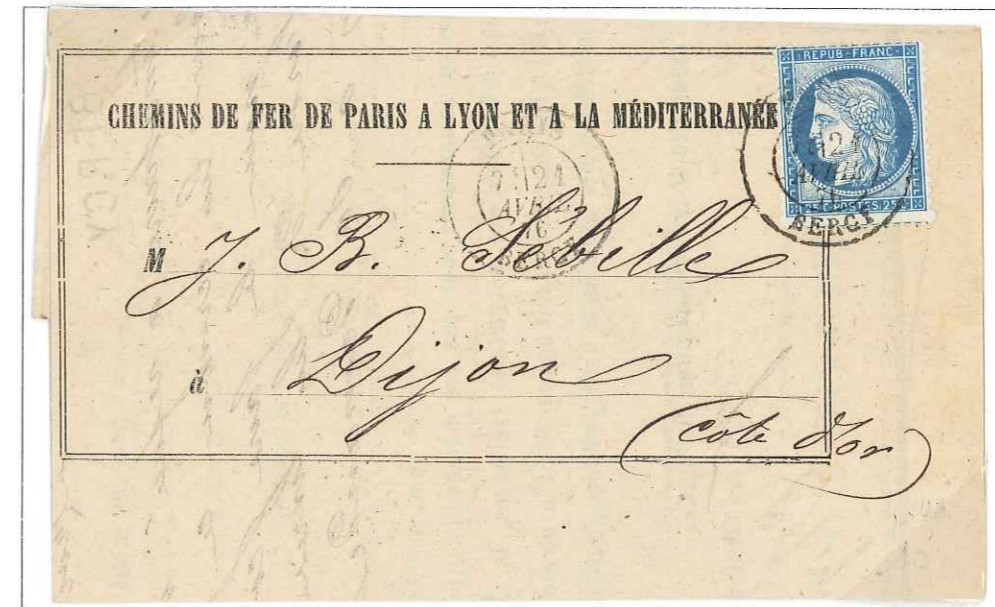
position 72D3,
3rd state
plate flaws



31 Aug. 1881; as above; insured money letter for 1000F; accountancy box on back indicates that Bercy-2 was assigned "fictitious" GC 6762

1x domestic letter = 15c; CHARGÉ fee = 25c; insurance at 10c/100F = 1F; postage = 1F40 (1 May 1878 Tariff)

Became Paris 57 in 1881



1 April 1876,
PARIS/BERCY

on Paris-Lyon-
Mediterranean
(PLM) railway
formule



9 Nov. 1876 use

Moved to 43, Rue de Bercy in 1876, and to 240, Rue de Charenton in 1878.
Became Paris 56 in 1881



22 Jan. 1865, LA CHAPELLE-S^T-DENIS/(60) + PC 892

the "PC of the GC", normally was to be used only at money-letter windows

1 Sept. 1865, as above, but with normal-use GC 892



10 Oct. 1870 (5th collection)
LA CHAPELLE-S^T-DENIS + GC 892

Siege of Paris balloon letter to Epernay (Marne)

17 October Plancy (Aube Dept.) arrival
[south of Epernay]

carried on either the "Washington" or the
"Louis-Blanc"



La Chapelle-Saint-Denis

Full-service post office from 1838

PC 743 GC 892



17 April 1854, LA CHAPELLE-S^T-DENIS/(60) + PC 743

50c prepaid 1x letter to Sardinian Savoy
(rate in effect from 1 July 1851)

transit via Beauvoisin and Chambéry
(19 April); St. Michel, 19 April arrival



24 Feb. 1862, LA CHAPELLE-S^T-DENIS/(60) + PC 743
20c 1x letter (1 July 1854 Tariff)

Post office reopened 1872(?) at 4, Rue Doudeauville



22 Nov. 1874, PARIS/LA CHAPELLE-S^T-DENIS
on pair 4c Cérès, on wrapper
8c = 70-80 gm newspaper rate (1 August 1856 Tariff)



11 May 1874, PARIS/LA CHAPELLE-S^T-DENIS + GC 992



11 Feb. 1871, PARIS/LA CHAPELLE-S^T-DENIS + GC 892
to occupied Meuse Dept.
treated as unpaid by German postal authorities, as shown by
blue double-line German tax



official Seine Dept. missive,
22 Oct. 1872, from Paris,
Palais de Luxembourg,
and taxed 25c

forwarded 23rd to
PARIS/LA CHAPELLE -
S^T-DENIS
accompanying 15c Cérès
(for the local rate)
cancelled by the #892,
and 25c Due crossed out

Charonne

Full-service post office from 1 July 1839, at 20, Rue de Paris

PC 755 GC 904



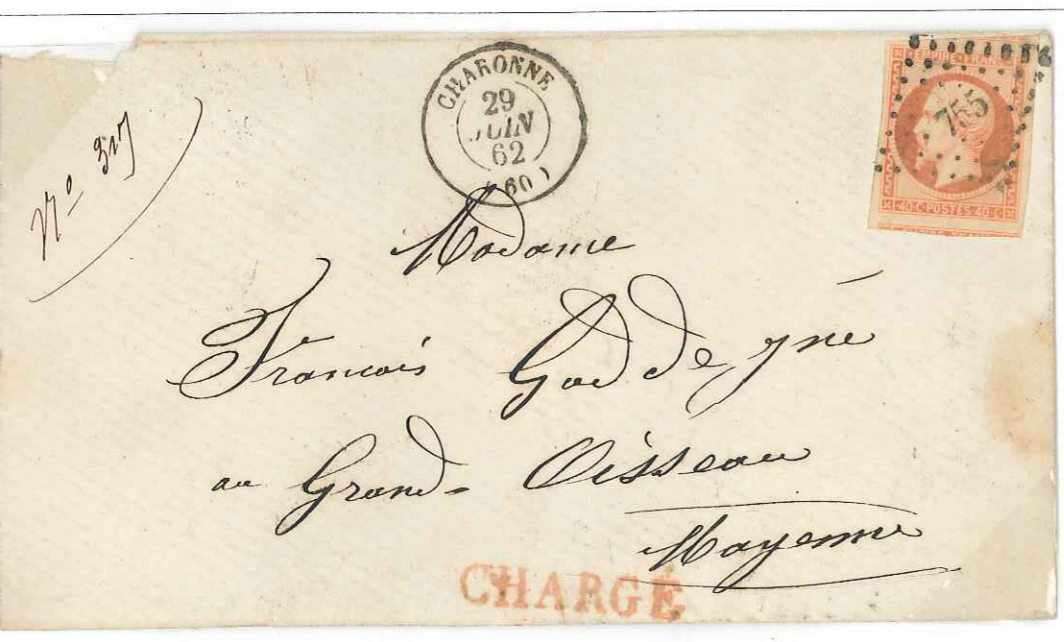
21 April 1852,
CHARONNE/(60)
+ PC 755
[early use of the PC]
on 25c Cérés
25c letter rate
(1 July 1850 Tariff)

29 Aug. 1860,
CHARONNE/(60)
+ PC 755
20c letter rate
(1 July 1854 Tariff)



29 June 1862,
CHARONNE/(60),
on 40c prepaid
CHARGÉ letter

9.5 gm (1x) letter .20
money letter fee .20
Postage, 1 January
1862 tariff .40



12 Nov. 1876, PARIS/LA CHAPELLE-ST-DENIS on 300Fr CHARGÉ money letter

7.25 gm (1x) letter .25
registry fee .50
insurance @20c/100F .60
postage 1.35



30 Oct. 1875, PARIS/
LA CHAPELLE-ST-DENIS
30c 1x letter to Switzerland
(1 January 1876 Tariff)

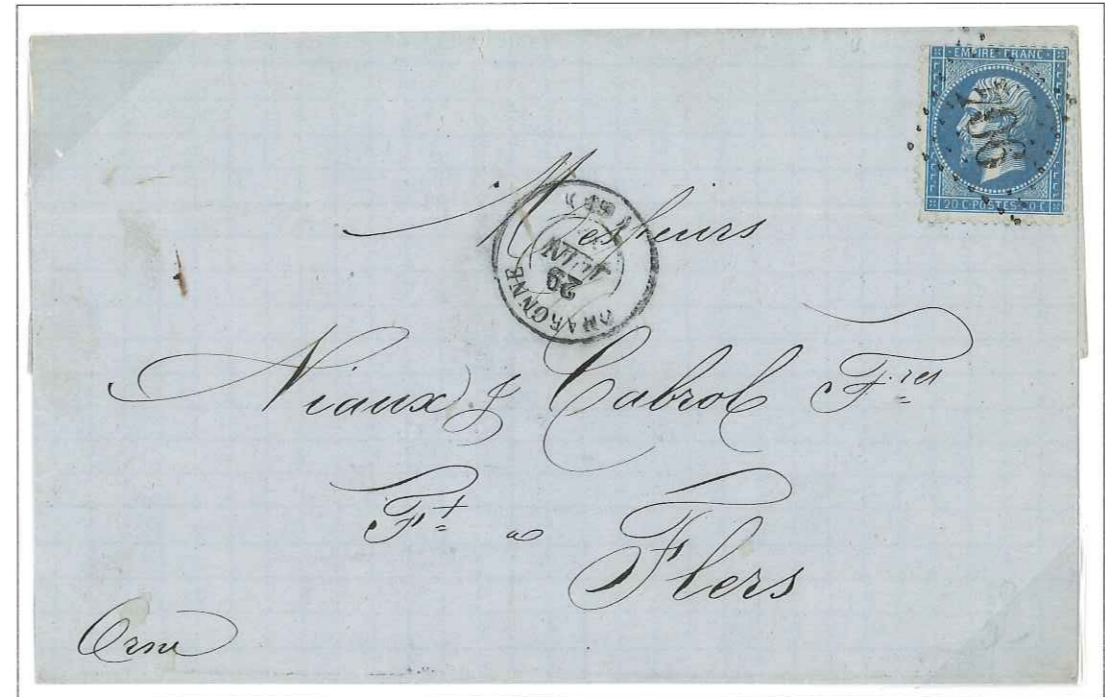


13 May 1879 use

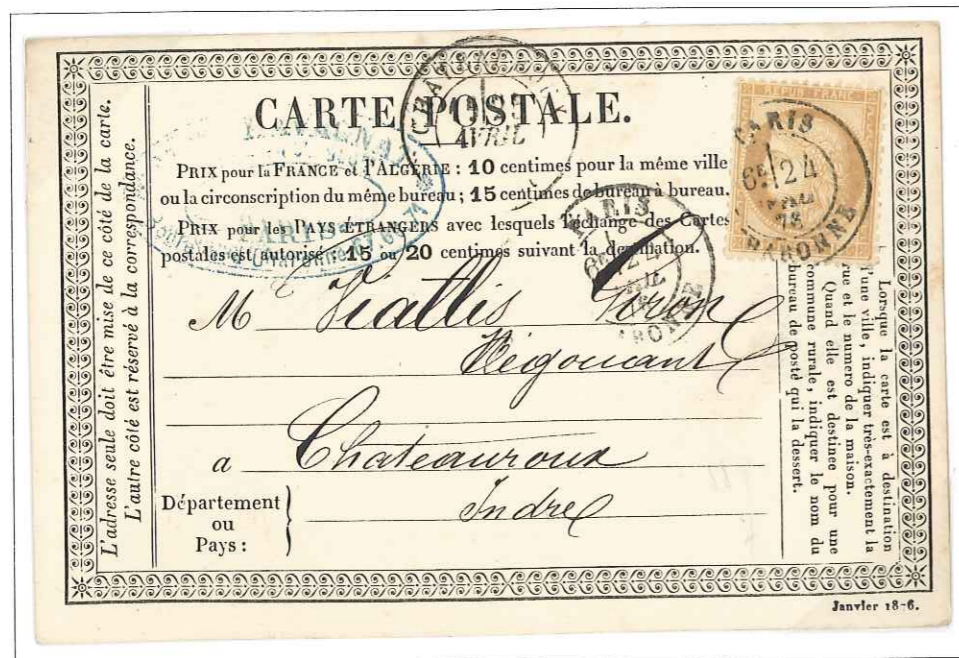
Became Paris 58 in 1881



18 Aug. 1874, PARIS/CHARONNE + GC 904



19 June 1863, CHARONNE/(60) + GC 904



24 April 1876, PARIS/CHARONNE
15c domestic card rate (15 January 1873 Tariff)

Became Paris 59 in 1881



11 Nov. 1870, PARIS/CHARONNE +GC 904

flown out of Paris on balloon "Le Daguerre",
which was captured along with most of its mail
no backstamps

Moved to 55, Rue de Bagnolet in 1872(?)



12 Dec. 1866,
PARIS/LA GARE -D'IVRY
[with hyphen]
+ GC 1625

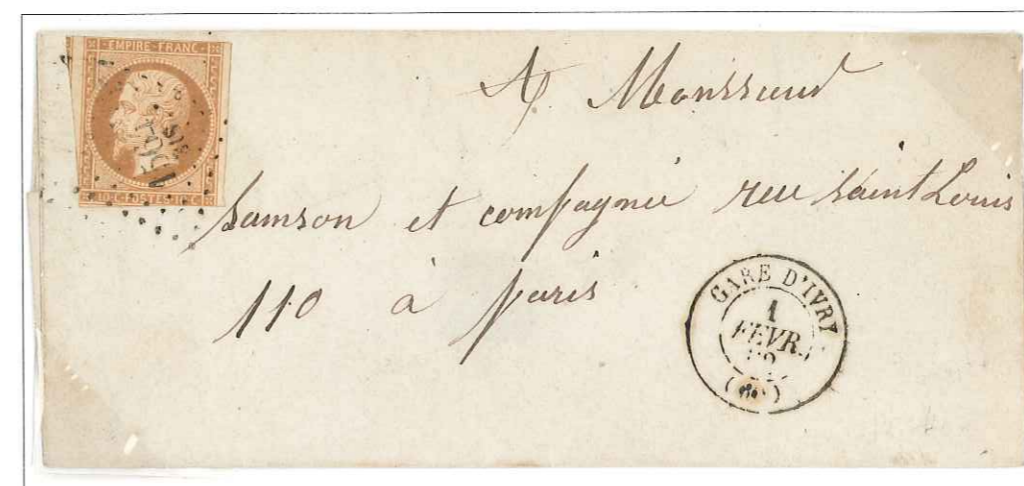
6 Sept. 1870, PARIS/LA GARE D'IVRY
[no hyphen] + GC 1625
overpaid 10c to England
Brighton, 19 September arrival backstamp



[left Paris two days prior to start
of the Siege]

La Gare d'Ivry

Postally served at first by La Maison Blanche; full-service post office from 1 March(?) 1860, at 29, Rue du Chevaleret
PC 1564bis GC 1625



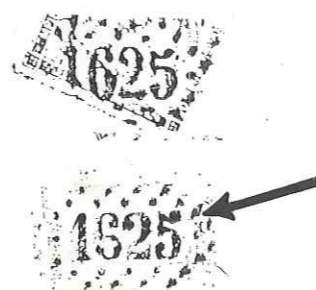
1 Feb. 1862, GARE D'IVRY/(60) + PC 1564/bis
10c local Paris rate (1 July 1853 Tariff)



3 May 1872, PARIS /LA GARE D'IVRY [no hyphen] + reengraved GC 1625
to German-annexed Colmar

2 (décimes) German tax; considered only partly prepaid by 15 February 1871 Convention

Mülhausen and Colmar 4 May backstamps



4 May 1865, GARE D'IVRY/(60) + GC 1625

Grenelle

Full-service post office from 11 August 1839, at 47 Rue de Grenelle

PC 1451 GC 1715

3 Feb. 1861, GRENELLE/(60)
[blue] + PC 1451
10c 1x local Paris letter to 15 gm
(1 July 1853 Tariff)



22 July 1875,
PARIS/LA GARE D'IVRY
[no hyphens] + GC 1625



14 March 1877, PARIS/
LA-GARE-D'IVRY [with hyphens]
1x letter to Bucharest, *Walachia*
(now Romania)
backstamps: Paris/Etranger 15 March,
19 March Bucharest arrival

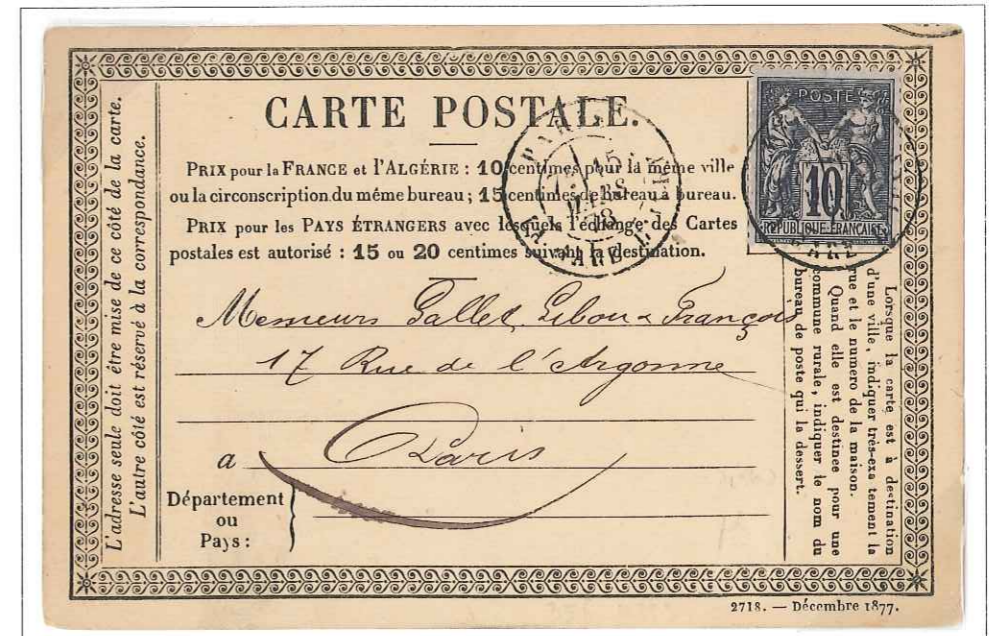


Moved to 9, Rue Jeanne d'Arc in 1877

2 June 1861,
GRENELLE/(60)
[ultramarine] + PC 1451



15 March 1878, PARIS/
LA GARE D'IVRY [no hyphen]
10c Paris local card rate
(in effect from 15 January 1873)



Became Paris 63 in 1881

10 June 1861, GRENELLE/(60)
[week later, in black] + PC 1451



24 Dec, 1883 and 15 Jan. 1884,
PARIS/LA-GARE-D'IVRY
[finer impressions, both with hyphens; dates
suggest a late change in the date stamp]



6 May 1871 (Commune Period),
 PARIS/GRENELLE
 red boxed PP (for prisoner franchise)
 [final month of Commune resistance]
 to officer at Fort d'Ivry
 from detainee at the École Militaire
 Paris, 6 May backstamp
 [ex-Cappart]

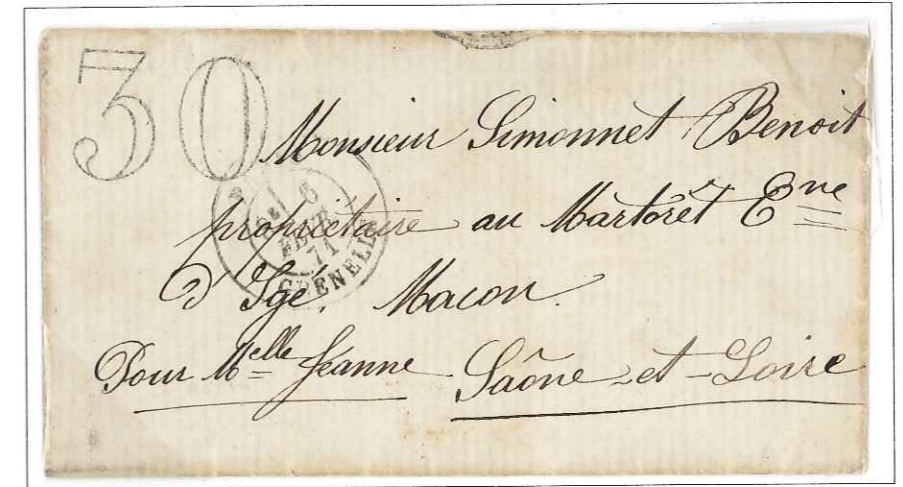


1 Oct. 1863
 GRENELLE/(60)
 + GC 1715



6 May 1871 (Commune Period),
 PARIS/GRENELLE
 to Communist soldier defending the
 Porte Maillot
 [red underlined name suggests a later
 detention by the Republicans]
 same day arrival backstamp at
 PARIS/ PASSY-LES-PARIS

6 Feb. 1871, PARIS/GRENELLE,
 30c tax (1½x unpaid letter rate)
 Macon, 11 February arrival backstamp
 3rd day of reopened postal
 communications from Paris



24 July 1871,
 PARIS/GRENELLE

4c + 1c Laurés on large
 fragment of death notice
 at 5c
 (1 August 1856 Tariff)



13 Feb. 1871, PARIS/GRENELLE,
 at 20c concessionary rate,
 to French POW in Baden
 blue German censor backstamp
 [used only 8-15 February]



19 Oct. 1876, PARIS/GRENELLE, on 1550F money letter [front only]

third day of issue of the 75c Sage value

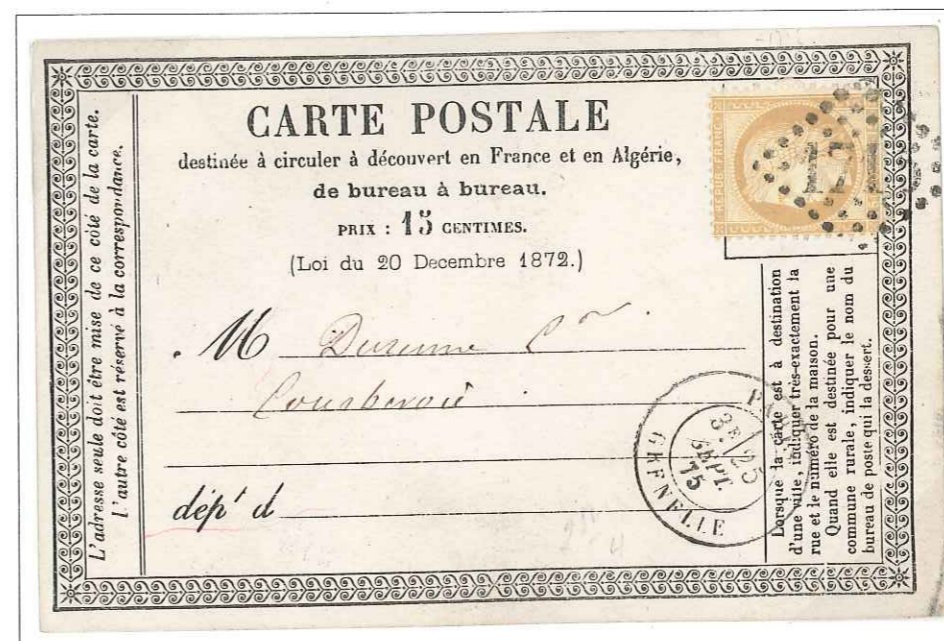
postage, 1x letter	.25
money-letter fee	.50
insurance, @ 20c/100F	3.20
total (1 January 1876 Tariff)	3.95

Moved to 27, Rue du Théâtre, then to 35, Rue de Lourmel in 1976 or 1978



11 Jan. 1874, PARIS/GRENELLE + GC 1715

15c 1x Paris letter, to 15 gm (1 September 1871 Tariff)



25 Sept. 1875, PARIS/GRENELLE + GC 1715

15c postcard rate (in effect from 15 January 1873)



23 July 1880, PARIS/GRENELLE receiving mark on pneumatic-tube formula card reduced to 30c, from Paris - Rue Jean-Jacques Rousseau (1 June 1880 Tariff)



26 January 1882, PARIS/GRENELLE money letter for 200 Fr [red accountancy box on back]

9.25 gm (= 1x) letter = .15
 insurance, at 10c/100 Fr = .20
 registry fee = .25
 postage (16 January 1879 Tariff) = .60

Became Paris 64 in 1881

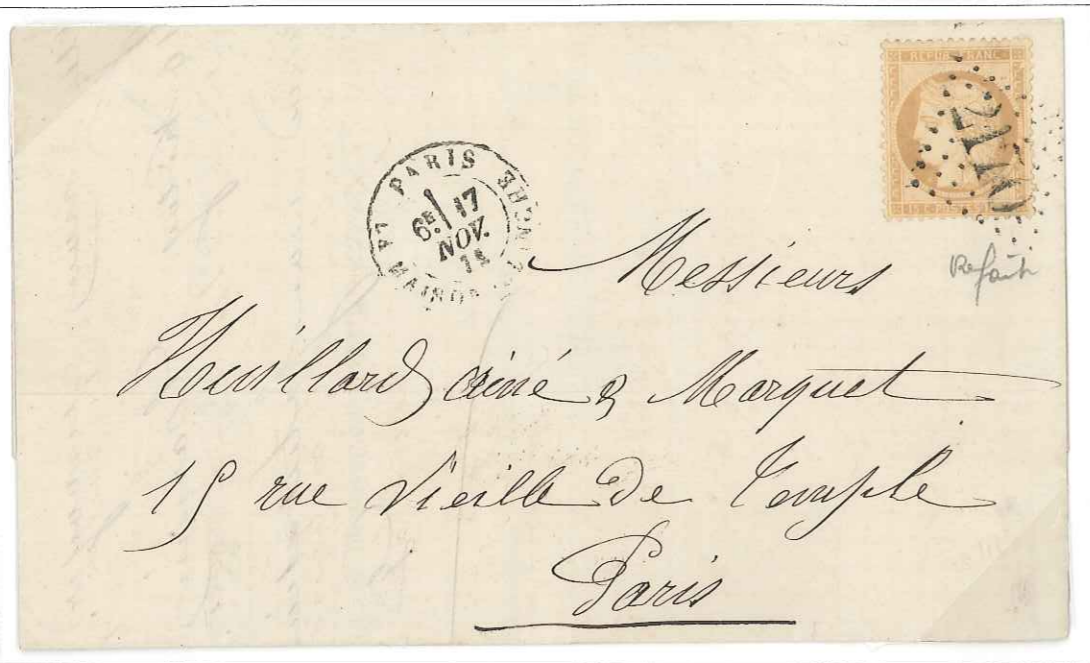
19 March 1878, PARIS/GRENELLE in smaller, post-1875 letters registered domestic 1x letter = 75c (1 January 1876 Tariff)



21 May 1879, PARIS/GRENELLE (smaller lettering) 10c domestic card rate (1 May 1878 Tariff)



2 July 1880, PARIS/GRENELLE 15c 1x domestic letter (1 May 1878 Tariff)



17 Nov. 1871, PARIS/LA MAISON-BLANCHE
+ reengraved GC 2170
15c Paris local letter (1 September 1871 Tariff)



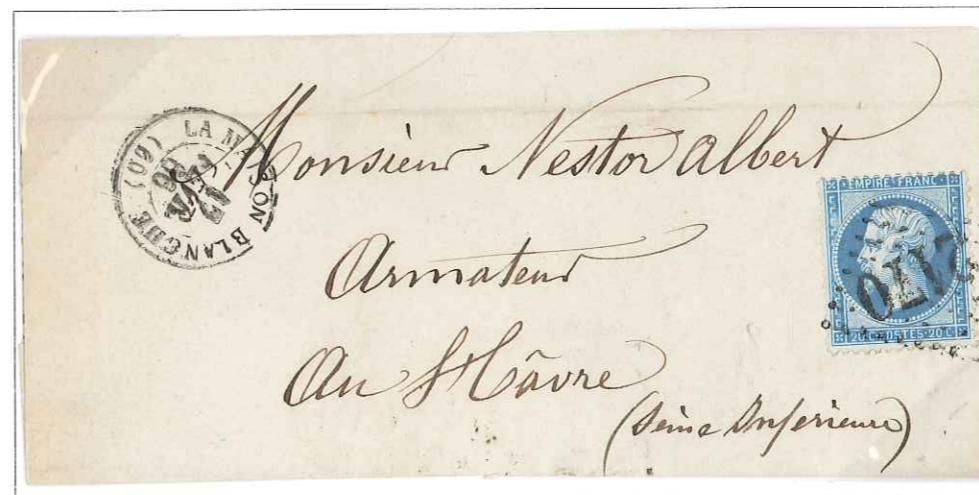
La Maison Blanche

Full-service post office from 1 May 1824, at 104, Avenue d'Italie

PC 11838 GC 2170



3 Sept. 1860, LA-MAISON-BLANCHE/60
[hyphen; no () about 60] + PC 1838



17 Feb. 1866,
LA MAISON-BLANCHE
[no hyphens; 60 within ()]
+ GC 2170



27 Nov. 1872, PARIS/LA MAISON-BLANCHE + GC 2170, on 5c strip of three
for 15c Paris local letter; no backstamp

5th pickup of 7 Oct. 1870,
PARIS/LA MAISON-BLANCHE
+ GC 2170
from artillery gunner
["Marin de Lorient"]
at Fort de Bicêtre
to his parents at Quimper

Illegible arrival backstamp;
flown out of Paris on either the
"Washington" or the "Louis Blanc"

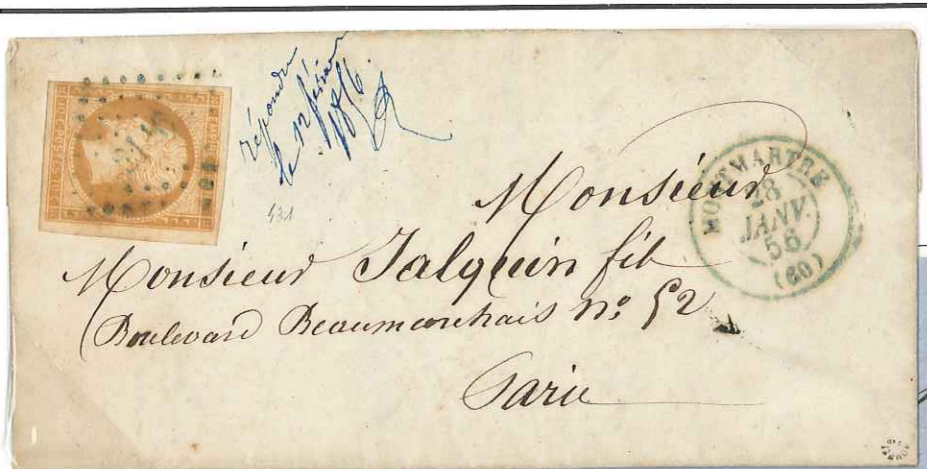


Montmartre 1

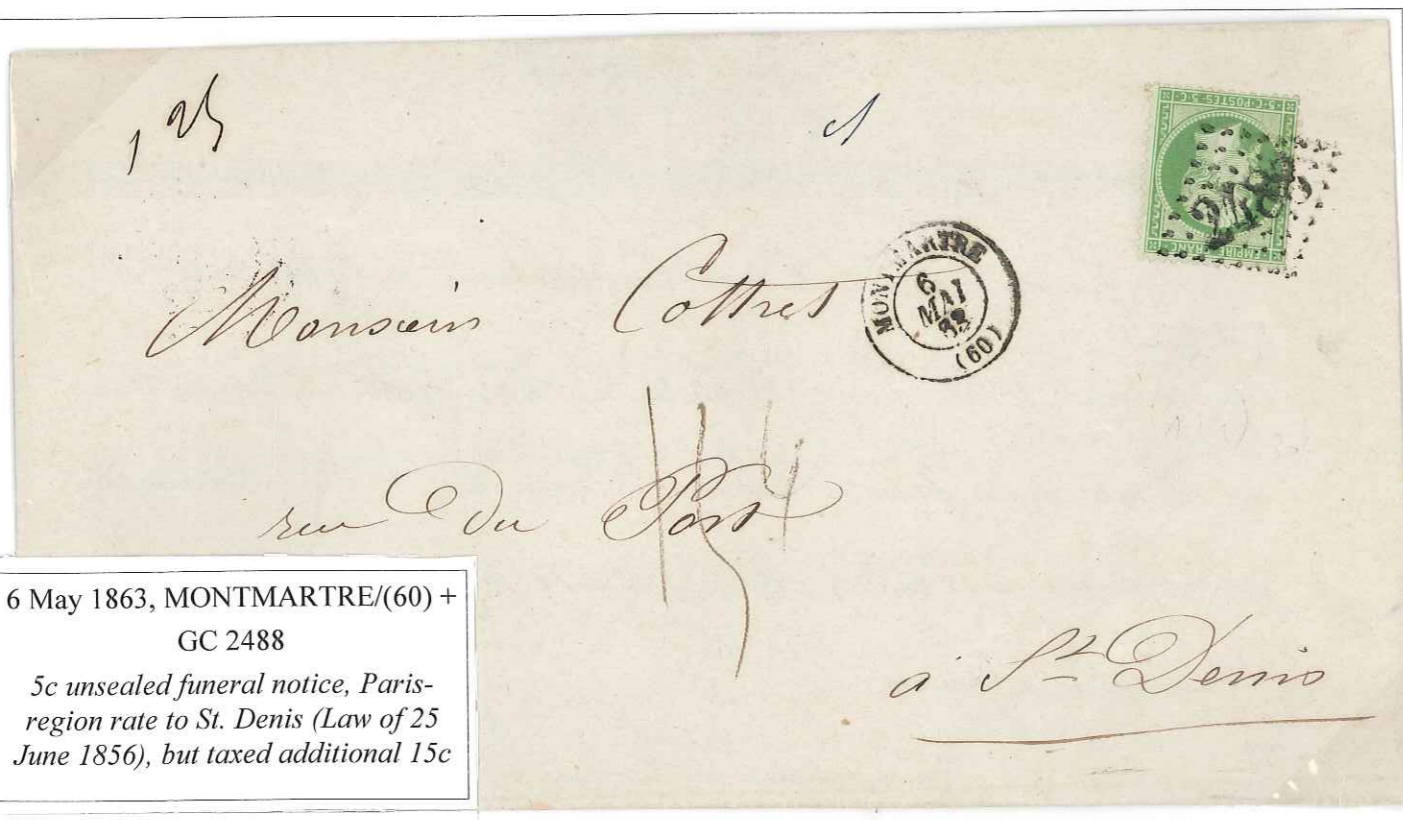
Full-service post office from winter 1838-39, at 11, Place des Abesses

PC 2116 GC 2488

28 Jan. 1856, MONTMARTRE/(60)
+ PC 2116
both in blue
[arrived same day, but 12 February
reply docketing on front]



16 Dec. 1861,
MONTMARTRE/(60)
+ PC 2116

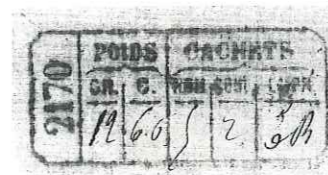


6 May 1863, MONTMARTRE/(60) +
GC 2488
5c unsealed funeral notice, Paris-
region rate to St. Denis (Law of 25
June 1856), but taxed additional 15c



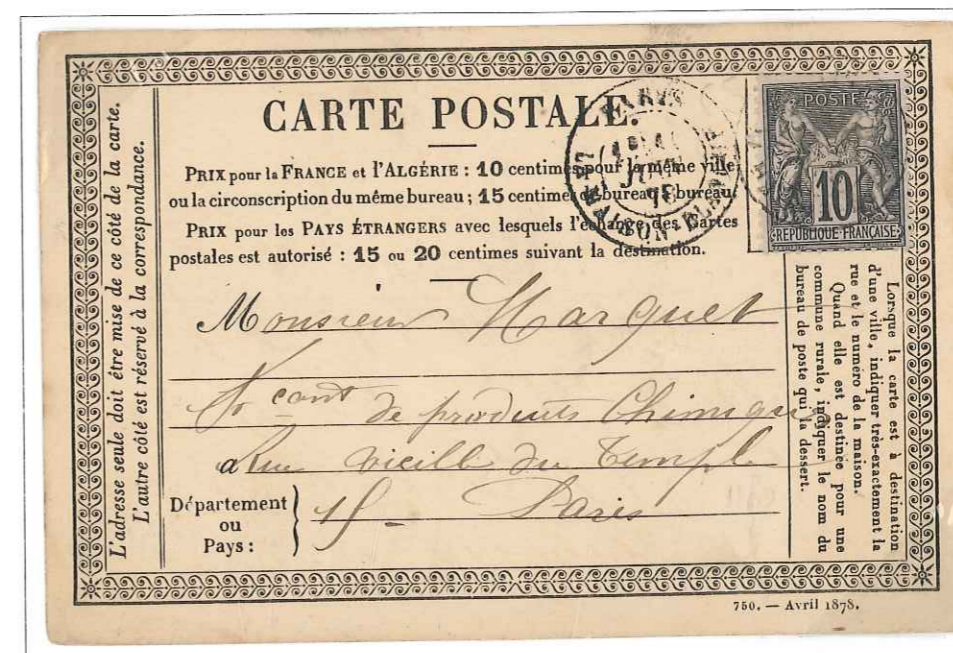
25 Feb. 1875, PARIS/LA MAISON-BLANCHE + GC 2170, on 1000F declared-value letter
red CHARGÉ; red accountancy box on back
black boxed "too late for last departure of day"
backstamps: Paris-Marseille 26 Feb. night train and 27 Feb. LaRochelle arrival

12.6 gm (2x) letter	.40
money-letter fee	.50
declared-value insurance fee	2.00
postage paid	2.90 (1 September 1871 Tariff)



11 June 1878, PARIS/
LA MAISON-BLANCHE
10c card rate
(1 May 1878 Tariff)

Moved to 77, Avenue d'Italie
and became Paris 65 in 1881



10 April 1871 [no collection N°],
 PARIS/MONTMARTRE on stamps
 Lyon, 30 May arrival backstamp
 first mail out of Paris after Commune
 was crushed



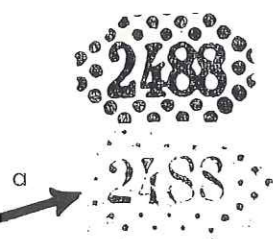
29 Oct. 1870 (3rd coll.), PARIS/MONTMARTRE + GC 2488, on
Gazette des Absents N° 3
 4 Nov. 1870 arrival backstamp in Orne Dept.
 flown 2 November out of besieged Paris on balloon "Le Fulton"



6 June 1871,
 PARIS/MONTMARTRE
 + GC 2488
 very seldom seen usage in a Paris
 suburb of a Bordeaux-issue stamp
 [not sold in post offices of Paris region]

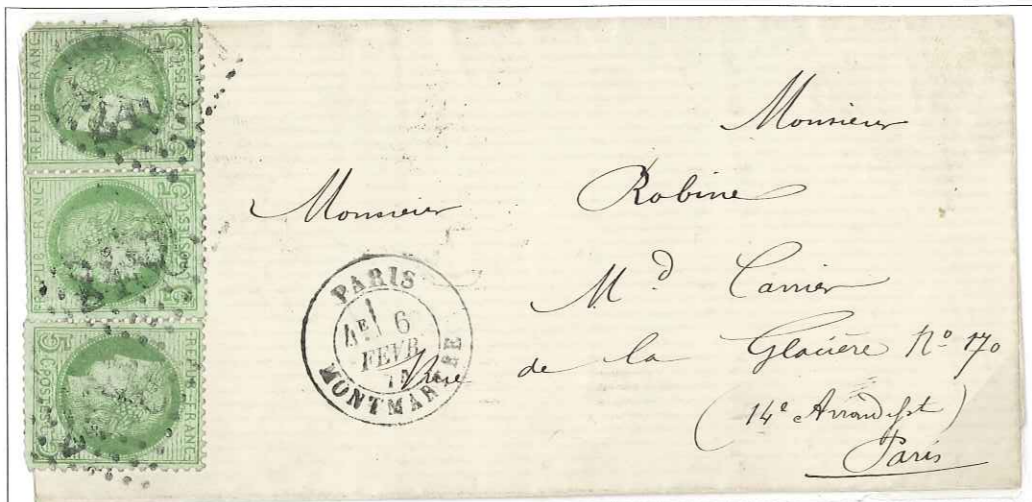


16 Dec. 1870, PARIS/MONTMARTRE + reengraved GC 2488
 Siege of Paris letter to mayor of 18th Ward
 [i.e. Georges Clemenceau, much later the World War I "Tiger of France"]
 [normal 2488 at top; stamp is cancelled with reengraved "d" 2488]



13 Dec. 1871,
 PARIS/MONTMARTRE
 + reengraved GC 2488





6 Feb. 1874,
PARIS/MONTMARTRE
+ GC 2488
15c 1x local letter <10 gm
(1 September 1871 Tariff)



9 Dec. 1877
PARIS/MONTMARTRE

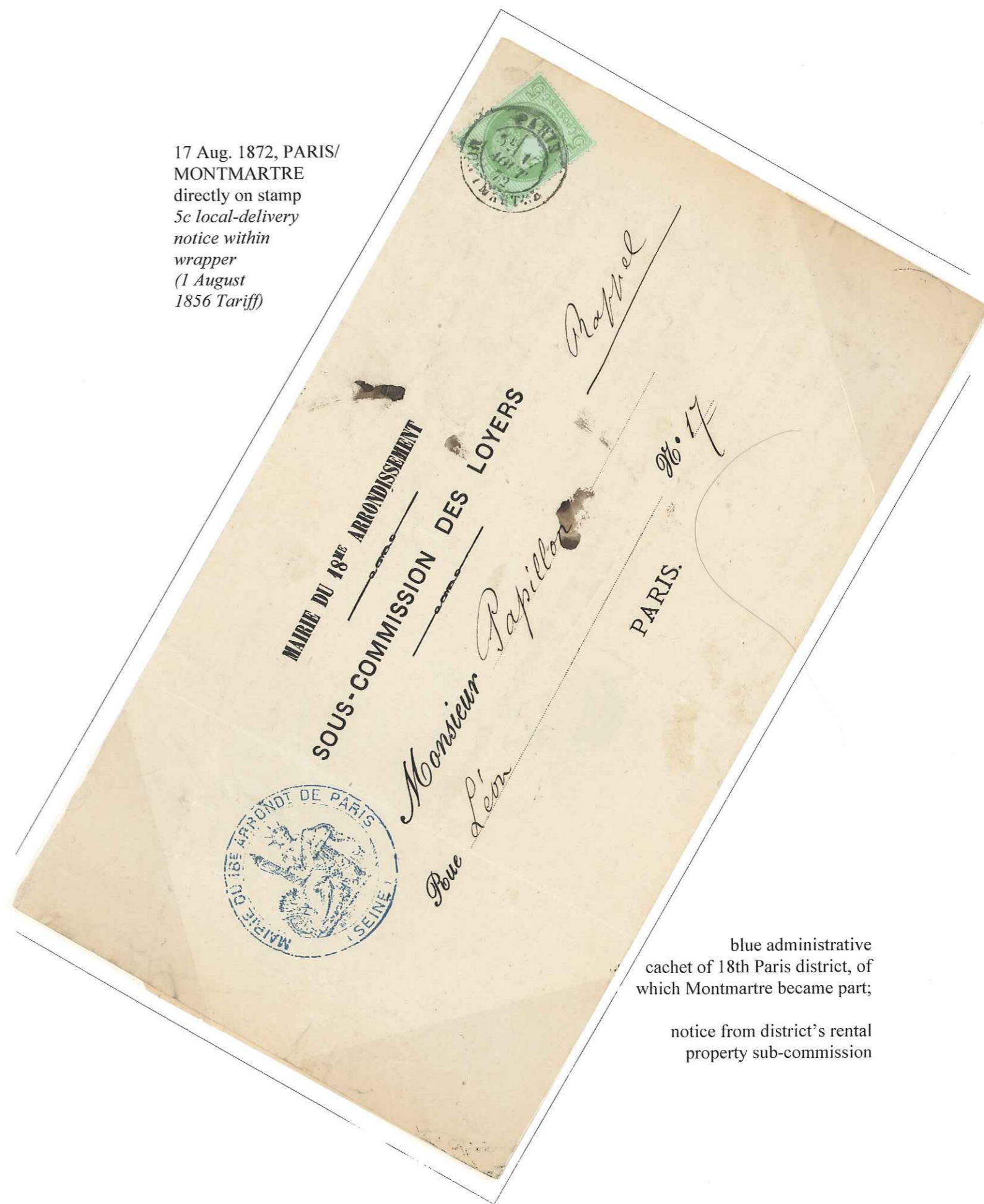
23 May 1875,
PARIS/MONTMARTRE
+ GC 2488
30c 1x letter to Belgium
(1 January 1866 Tariff)



3 March 1875,
1 PARIS 1/MONTMARTRE
+ GC 2488
[base of #s faces outward]

3x domestic letter = 70c,
less 40c prepaid = 30c short
paid;
2x penalty = 60c
= 6 décimes tax shown in ink

used concurrently with
above 1875 and 1877 date
stamps



17 Aug. 1872, PARIS/
MONTMARTRE
directly on stamp
5c local-delivery
notice within
wrapper
(1 August
1856 Tariff)

blue administrative
cachet of 18th Paris district, of
which Montmartre became part;

notice from district's rental
property sub-commission

A. Leroy.
N^o. 6. Rue Duroc. prolongée.
Paris-Montmartre

607 Quatre Cents francs.
CHARGÉ

Monsieur Desmots
Huissier, a

Saint-Amand-les-Eaux.

Mords.

12.60 SIA



17 Feb. 1879, PARIS/MONTMARTRE 1°

400F money letter @ 80c (16 January 1879 Tariff)

12.2 gm letter = .15

Registry fee = .25

Insurance @ 10c/100F = .40

Postage = .80



Monsieur
Beumerville-fris
Cannons a Millan
Aveyron



17 April 1876

the rare PARIS/MONTMARTRE 1°

[date stamp introduced December 1875]



CARTE POSTALE

Ce côté est réservé exclusivement à

M

Darranc

Pharmacie Droguet

Rue Vimy Lafranc



20 April 1876 use

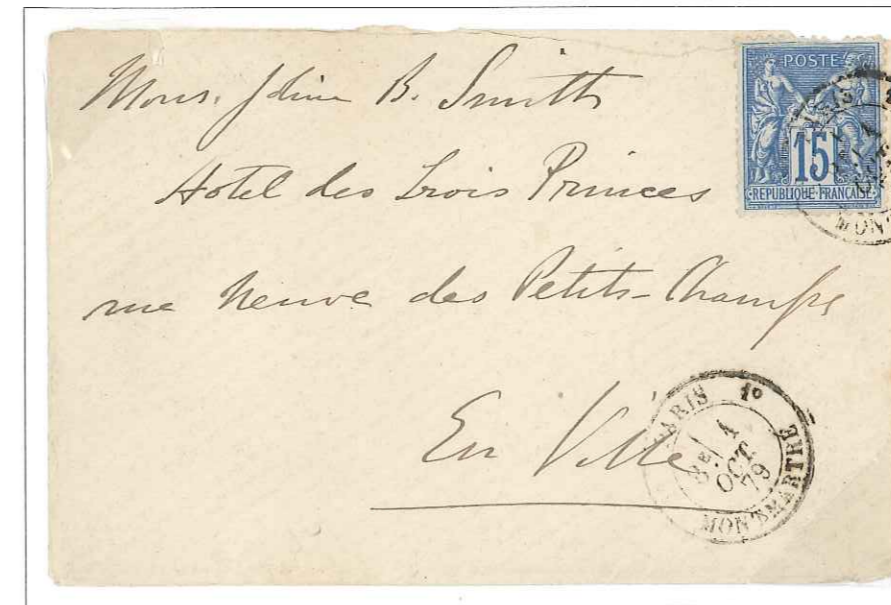
27 Aug. 1878, 1 PARIS 1/MONTMARTRE

[base of #s faces inward]

Montmartre -2 (Clignancourt)

Post office opened 16 January 1872, at 34, Rue Harmel; full-service from 1877

GC 6122

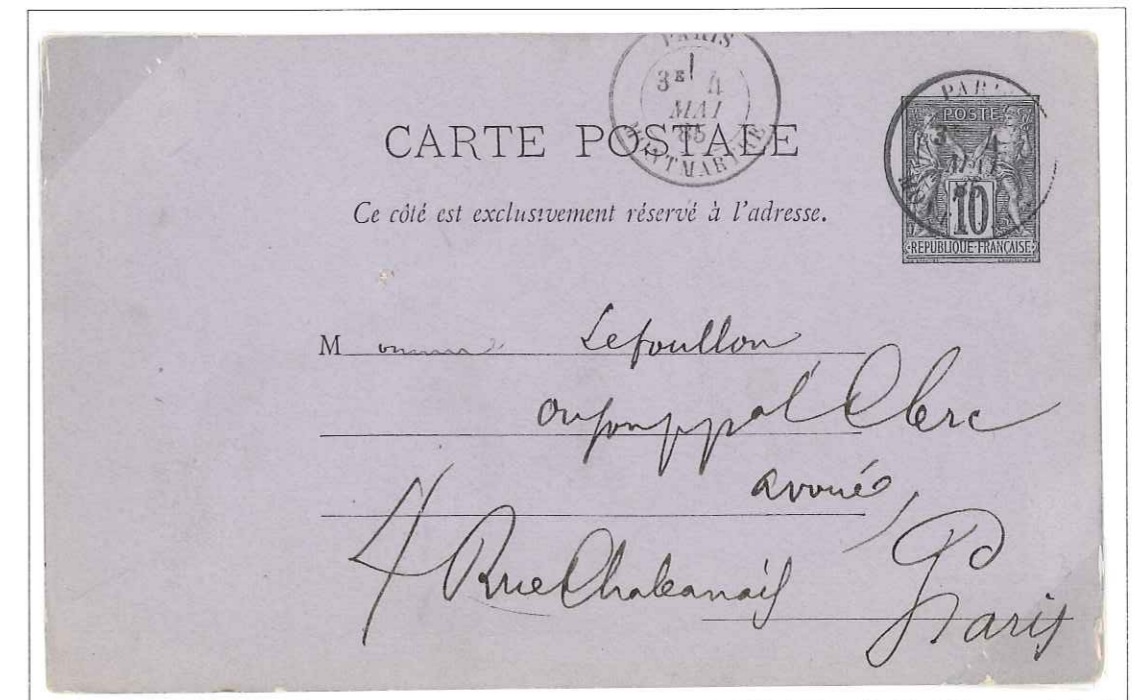


14 Feb. 1877, 2 PARIS 2/
MONTMARTRE
previously used stamp; taxed at 40c
unpaid 1x letter rate;
addressee left without a forwarding
address and no charges could be filed

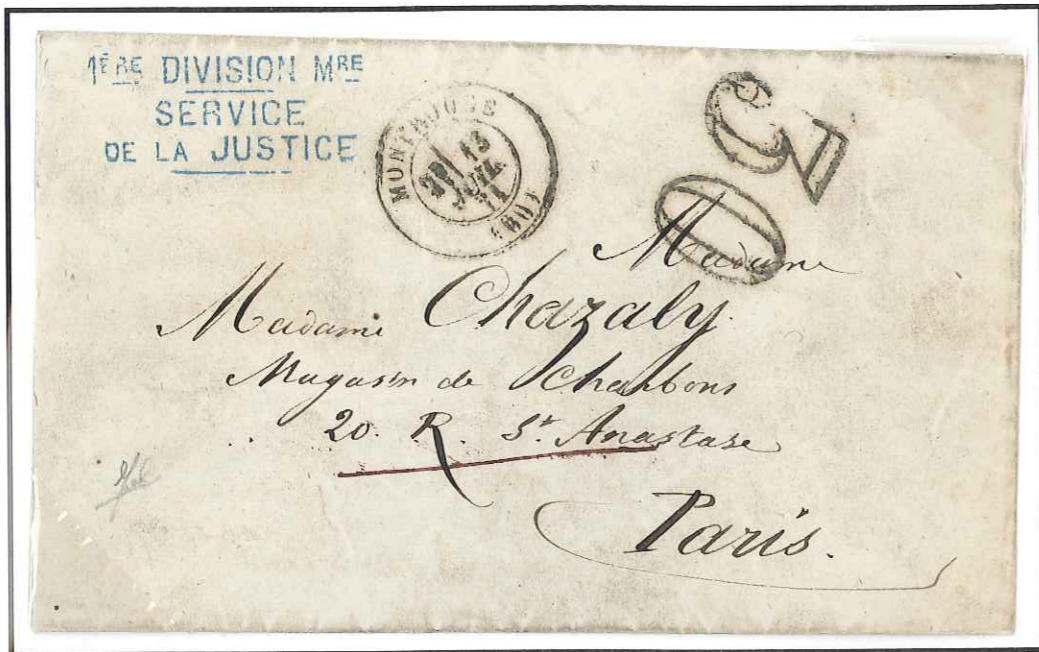


4 May 1885 [late usage],
PARIS/MONTMARTRE

[2nd type: smaller and
finer lettering;
probably introduced
c.1881?]



Moved to 150, Blvd. Ornano in 1876(?); became Paris 60 (Clignancourt) in 1881



13 July 1871,
 MONTROUGE/(60), to Paris from (blue)
 1^{ERE} DIVISION M^{RE}
 SERVICE
 DE LA JUSTICE
 [repeated on flap]
 taxed 30(c)

to wife of Communard prisoner, authorizing payment of 50F seized from her husband



5 Aug. 1873, MONTROUGE/(60)+ GC 2522

Montrouge

Post office opened 1792-96 beyond the Paris walls, then again after August 1823; full-service from 1877.
 PC 2147 GC 2522

26 Nov. 1855,
 MONTROUGE/(60)
 + blue PC 2147

[year shown on
 backstamp]



4 Sept. 1858,
 MONTROUGE/(60)
 + PC 2147

11 Sept. 1863,
 MONTROUGE/(60)
 + GC 2522



Postal facility and then full-service post office, within the walls, opened 1860 at 16, Rue Mouton-Duvernet
 PC 2147bis GC 2523



17 June 1861,
 MONTRouGE/
 PARIS + PC 2147bis
 on pair 5c imperf.
 Empire

10c Paris local letter
 (1 July 1853 Tariff)

17 March 1866,
 MONTRouGE/PARIS + GC 2523



9 May 1868,
 PARIS/
 MONTRouGE-
 PARIS
 [date stamp
 introduced
 March 1866]
 + GC 2523

7 Aug. 1877,
 MONTRouGE/(60)
 on 75c 1x domestic
 registered letter
 (1 January 1876 Tariff)

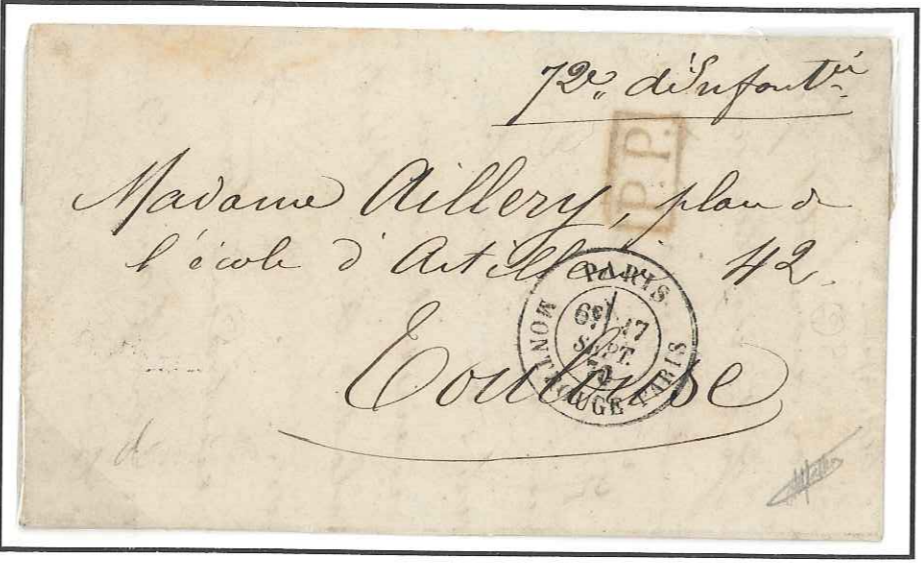
PARIS/
 MONTRouGE
 same-day transit back
 stamp, having been
 handled first beyond-
 the-walls and then
 within-the-walls



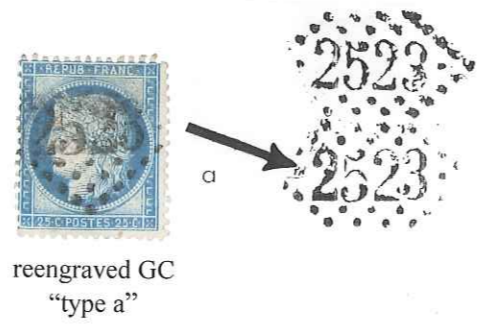
5 June 1878,
 MONTRouGE/(60)

1x domestic registered
 letter rate now reduced
 to 65c
 (1 May 1878 Tariff)

17 Sept. 1870, PARIS/
 MONTRouGE-PARIS
 franchise letter from member of
 72nd Infantry Regt.;
 Toulouse, 19 September arrival
 backstamp
 left Paris on last day of normal
 pre-Siege communications



3 Oct. 1870 (1st collection), PARIS/MONTRouGE-PARIS
 GC 2523; 10c Lauré on card; 21 October arrival backstamp;
 siege balloon "Non-Denommé N° 2" (= "Piper I") possible



Dec. 1870 (2nd collection) + GC 2523,
 PARIS/MONTRouGE-PARIS
 on Gazette des Absents N° 12
 of 30 Nov. 1870
 8 December Aube Dept. backstamps
 flown most likely on the "Franklin",
 possibly on the "Denis-Papin"

N° 353. Car.
 Mai 1865.

**DIRECTION GÉNÉRALE
 DES POSTES.**

DÉPARTEMENT de *clermont*

A Paris, le 11 Nov 1865.

SERVICE DE LA DIRECTION (").

LETTRE D'AVERTISSEMENT.

N° du répertoire du Directeur :

M. Pelletier Receveur
 du Bureau de *Montrouge Paris*

Je vous prie, Monsieur, d'avoir égard
 aux observations et demandes ci-après :

Le vous prie de recueillir et de
 me transmettre promptement un
 empreinte aussi nette que possible
 de chacun des timbres en usage
 à votre bureau pour l'oblitération
 des timbres-poste.

Le Directeur des Postes
 du Département de la Seine.

L. Bureau

S. Bureau

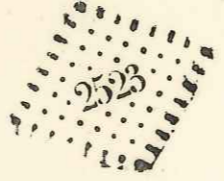

aux observations et demandes ci contre.

N° du répertoire de l'agent dont émane la
 réponse :

A Montrouge le 12 Nov 1865.

Deux timbres oblitérants sont
 en usage au Bureau de Montrouge
 l'un est spécialement affecté au
 guichet - l'autre au départ. En
 voici les empreintes -

guichet - - - départ.

request form from Seine Dept. postal headquarters at Paris to Montrouge postmaster, 11 November
 1865, demanding sample impressions of each killer at hand; returned 12 November with impressions of PC of
 GC 2523 and of GC 2523.

[unique document]