

1937-47. DEFINITIVES.

Wmk, Inverted.



Wmk, Sideways.



COIL JOINS



GREAT BRITAIN

1937-47. DEFINITIVES. Dark colours.

Wmk, Upright.



Green Deep green



Ultramarine Deep ultramarine Green-grey Deep greenish grey



Brown Pale brown Pale purple Reddish purple



Bright crimson Deep rose Deep olive-green Blue-olive



1½d Deep red-brown.

AUGUST 1937. Booklet pane of 6.



Wmk upright.

Wmk inverted.

JANUARY 1938. Booklet pane of 2.



Wmk upright

Wmk inverted.

½d Deep green.

AUGUST 1937. Booklet pane of 6.

Wmk upright.

Wmk inverted.

FEBRUARY 1938. Booklet pane of 2.

Wmk upright.

Wmk inverted.

JUNE 1940. Booklet pane of 4. Wmk sideways.



Binding edge at top.

Binding edge at bottom.

1941-51. DEFINITIVES. Light colours.

Wmk upright.



Type 1

Type 1
Thick paper

Pre Type 1

Type 2

Type 2
Thick paper



Wmk inverted.



Wmk sideways.



Type 1

Type 1
Thick paper

MARCH 1942. 1/2d Pale green.

Booklet panes of 6.



Wmk. Upright.

Wmk. Inverted.

Booklet pane of 2.



1d Pale scarlet. Booklet panes of 2

Type 1.

Type 2.

1/2d Pale red-brown. Booklet pane of 2.



2nd OCTOBER 1950 - SEPTEMBER 1952. DEFINITIVES. (Colours changed)

Wmk upright.



Type 2

Type 1a

Type 1b

Type 1c



Red-brown

Bt. red-brown

Wmk inverted.



Type 1a

Type 1b

Type 1c



Red-brown

Bt. red-brown

Wmk sideways.



Type 1

Red-brown

Bt. red-brown

MARCH 1942. 2d Pale orange.

Booklet pane of 6.



Wmk upright



Wmk inverted

MARCH 1942. 2½d Light ultramarine.

Booklet pane of 6.

Wmk upright

Wmk inverted

3rd MAY 1951. 1d Light ultramarine.

Booklet pane of 6.

Wmk upright

Wmk inverted

Booklet pane of 4.

i. Wmk upright.



Type 2. Binding top



Type 2. Binding bottom



Type 1a.

ii. Wmk inverted.

Type 1a.



Booklet pane of 2.



92

3rd MAY 1951. 1/2d Pale orange.

Booklet pane of 6.



Wmk upright



Wmk inverted

Booklet pane of 4.



Wmk upright.
Binding edge at top.



Wmk upright
Binding edge at bottom



Wmk inverted

Booklet pane of 2.



3rd MAY 1951. 1½ Pale green.

Booklet pane of 6.



Wmk upright

Wmk inverted

Booklet pane of 4.



Wmk upright
Binding edge at top



Wmk upright
Binding edge at bottom



Wmk inverted

Booklet pane of 2.



ADVERTISEMENT BOOKLET PANES OF SIX.

i. MINIMUM INLAND PRINTED PAPER RATE 1½d. a. 17mm. high.



MINIMUM
INLAND
PRINTED
PAPER
RATE
1½d.



1½d.
MINIMUM
INLAND
PRINTED
PAPER
RATE



MINIMUM
INLAND
PRINTED
PAPER
RATE
1½d.

Wmk upright



MINIMUM
INLAND
PRINTED
PAPER
RATE
1½d.



1½d.
MINIMUM
INLAND
PRINTED
PAPER
RATE



MINIMUM
INLAND
PRINTED
PAPER
RATE
1½d.

Wmk inverted

b. 15mm. high



MINIMUM
INLAND
PRINTED
PAPER
RATE
1½d.



1½d.
MINIMUM
INLAND
PRINTED
PAPER
RATE



MINIMUM
INLAND
PRINTED
PAPER
RATE
1½d.

Wmk upright



MINIMUM
INLAND
PRINTED
PAPER
RATE
1½d.



1½d.
MINIMUM
INLAND
PRINTED
PAPER
RATE



MINIMUM
INLAND
PRINTED
PAPER
RATE
1½d.

Wmk inverted

ii. SHORTHAND IN ONE WEEK.



SHORTH AND IN I WEEK

Send 3d. for full details & FREE TEST LESSON

OUTTON SHORTHAND (SR-1) 71 ST. RUSSELL ST. LONDON, WCI

Name

Address

Wmk upright



SHORTH AND IN I WEEK

Send 3d. for full details & FREE TEST LESSON

OUTTON SHORTHAND (SR-1) 71 ST. RUSSELL ST. LONDON, WCI

Name

Address

Wmk inverted

1939 - 48. HIGH VALUE DEFINITIVES.



Brown



Deep brown



Blue-black



Steel blue-black



3rd MAY 1951. 'FESTIVAL' HIGH VALUES.



Deep brown



Brown

3rd MAY 1951. 2d Pale red - brown.

Booklet pane of 6.



Wmk upright



Wmk inverted

3rd MAY 1951. 2½d. Pale scarlet

Booklet pane of 6.



Wmk upright



Wmk inverted

26th APRIL 1948. ROYAL SILVER WEDDING.



10th MAY 1948. 3rd ANNIVERSARY OF THE LIBERATION OF THE CHANNEL ISLANDS.



Scarlet

Rose-red

29th JULY 1948. LONDON OLYMPIC GAMES.



13th MAY 1937. CORONATION.



6th MAY 1940. CENTENARY OF THE FIRST ADHESIVE POSTAGE STAMPS.



11th JUNE 1946. VICTORY.



Shiny ink



1948. SILVER WEDDING. (CONT.)

COMPLETE £1 SHEET.

CONSTANT FLAW.

LINE ABOVE KING'S SHOULDER EXTENDING TO QUEEN'S CHEEK. STAMP 3/4.

7385



56 UNEMPLOYED NO. 303 MADE IN ENGLAND

POSTAGE DUE STAMPS

1937 - 51.



Rose-red Scarlet



Grey-green Dull grey-green Light brown Yellow-brown



Dull purple/
Pale yellow Purple/Yellow

1951 - 52.



Dull orange Orange



10th OCTOBER 1949. UNIVERSAL POSTAL UNION (75th ANNIVERSARY).



3rd MAY 1951. FESTIVAL OF BRITAIN.



Occupation issues for the Channel Islands.



Channel Islands Issues 1940-1944

Before we take a look at the stamps themselves, I would like to examine their status within the philatelic hobby.

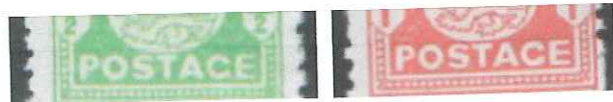
UK Catalogues. In the Stanley Gibbons catalogue the Channel Islands issues from WW2 are not mentioned in the Germany Specialised Catalogue (1979). They are to be found in the Stanley Gibbons Great Britain catalogue. In fact the most misleading comment is "Stamps issued under British authority during the German occupation". I have yet to discover what **authority** Britain had over the Channel Islands during the occupation? Perhaps this is just British post-war pride?

German Catalogues. When for example looking through the "Great Britain" section in the Michel Europa (1961) you will find the comment at the bottom of the page "Channel Islands, see under Germany, German occupations". In fact German philatelists who study the German WW2 Occupations go very deep into the Channel Islands issues and have listed more types and shades than I have seen in the UK catalogues, perhaps that is just Germans being Germans. It would seem that Germans play up the occupation, whilst the British play it down.

B. GUERNSEY.
(a) War Occupation Issues.
 Stamps issued under British authority during the German Occupation.

BISECTS. On December 24th, 1940 authority was given, by Post Office notice, the prepayment of penny postage could be effected by using half a British 2d. stamp, diagonally bisected. Such stamps were first used on December 27th, 1940.

The 2d. stamps generally available were those of the Postal Centenary issue, 1940 (S.G. 482) and the first colour of the King George VI issue (S.G. 465). These are listed under Nos. 482a and 465b. A number of the 2d. King George V, 1912-22, and of the King George V photogravure stamp (S.G. 442) which were in the hands of



STANLEY GIBBONS PUBLICATIONS LTD, LONDON AND BINGHAMPTON
 MADE AND PRINTED IN ENGLAND



1942. GUERNSEY COAT OF ARMS.

b. Roulette 7 and/or 14. Wmk Loops.

Printed on coloured French Bank Note paper.



Green / Blue



Green/Grey-blue



Deep red/Blue



Red/Grey-blue

JERSEY

1941-43. JERSEY COAT OF ARMS.

Line perf 11. No wmk.



Thin paper



Printed on newsprint



Thin paper



Chalky paper



Printed on newsprint

CHANNEL ISLANDS

GUERNSEY

1941-44. GUERNSEY COAT OF ARMS.

a. Roulette 7 and/or 14. No wmk.



Light green



Emerald-green



Bluish green



Bright green



Dull green



Olive-green



Pale yellow-green



Deep yellow-green



Scarlet



Carmine-red



Carmine-red
(Thin paper)



Pale vermilion



Ultramarine



Deep ultramarine

1943-44. VIEWS OF JERSEY.

Comb perf 13.5 x 13.25. No wmk.

a. White paper.



b. Newsprint paper.



VIEWS OF JERSEY.

1943. 'MISE EN TRAIN' PROOFS.

Imperforate set of 4.



CENTENARY OF FIRST POSTAGE STAMP (2d value), TIED WITH PAIR 1d COAT OF ARMS.
Pair bisected top right to bottom left. Postmarked First day of issue (18th FEB 1941).



Alfred S. Summerfield Esq.,

5, Harrow Road,

West Bridgford,

Nottingham.

England.

GENERAL ISSUE

10th MAY 1948. THIRD ANNIVERSARY OF THE LIBERATION.



Scarlet



Rose-red

BISECTED STAMPS

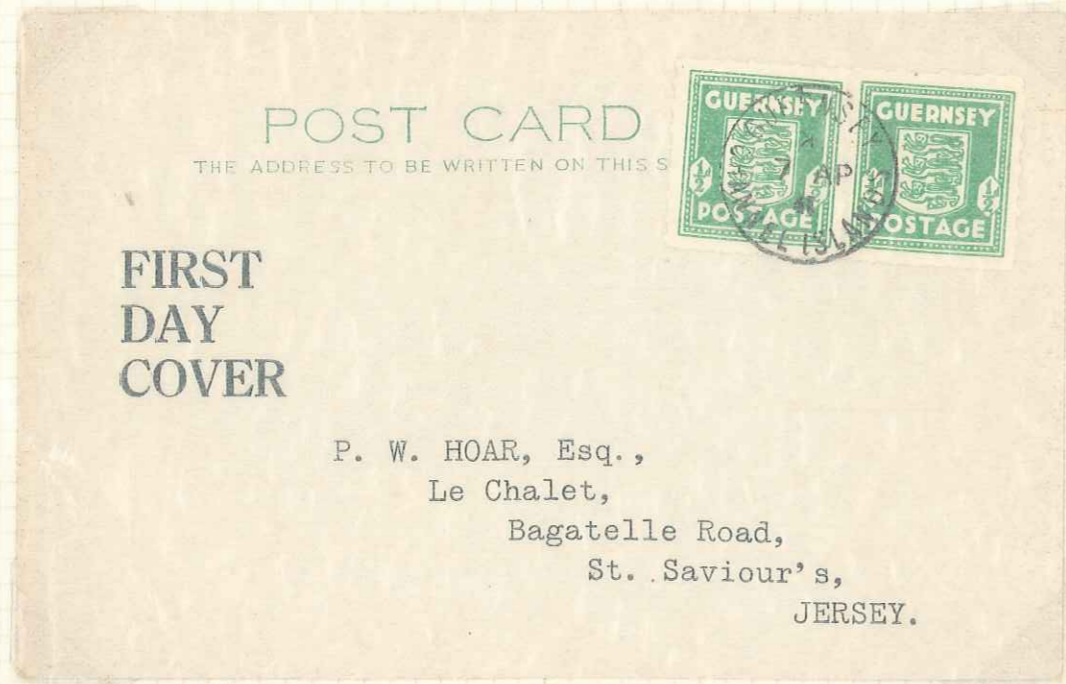
27th DECEMBER 1940 - 24th FEBRUARY 1941.

2d VALUES OF GREAT BRITAIN BISECTED DIAGONALLY.

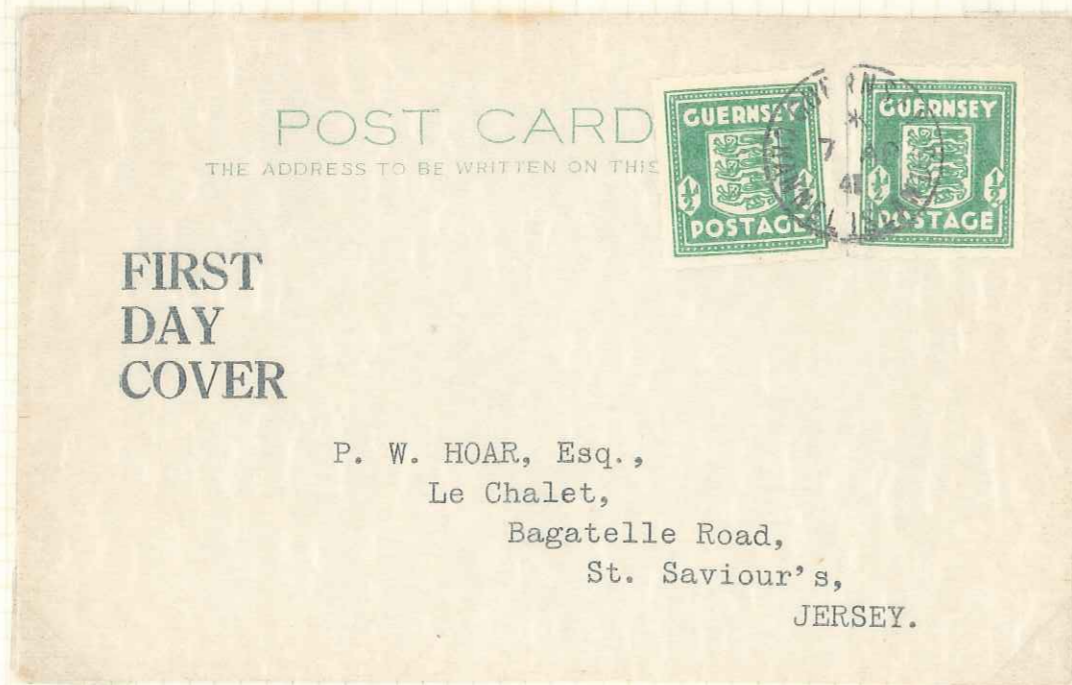
- i. Definitive bisected R. top to L. bottom.
a. Bottom and right edges.



FIRST DAY OF ISSUE (7th APRIL 1941). 1 of 41 inverted.



Light green



Emerald-green

CENTENARY ISSUE.
Bisected top left to bottom right.
a. Top and right edges.



b. Bottom and left edges.

