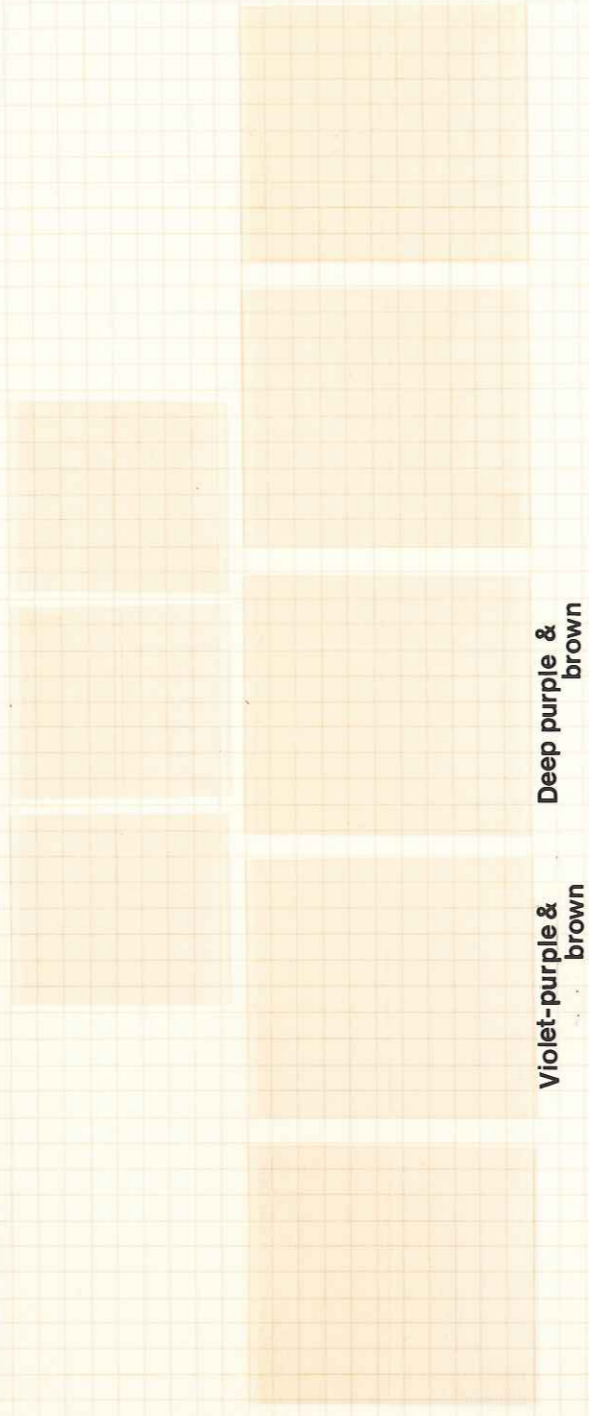


OFFICIAL STAMPS.

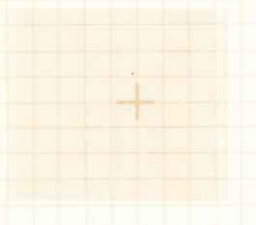
1937 - 1947. ISSUES OF 1937 OVERPRINTED SERVICE.



Violet-purple & brown

Deep purple & brown

20th APRIL 1939. 1a 3p ISSUE OF KING GEORGE V OVERPRINTED SERVICE & SURCHARGED 1A.



1st JUNE 1939 - 1st OCTOBER 1942. ISSUE INSCRIBED SERVICE.



1950 - 1951. ISSUE INSCRIBED SERVICE.



HYDERABAD.

6th DECEMBER 1945. VICTORY. (Shades)



# JAMAICA

1

12th MAY 1937. CORONATION.



10th OCTOBER 1938 - 1st JULY 1952. DEFINITIVES.



Deep green



Green



Orange



Deep orange



Scarlet



Carmine-red



Brown



Light brown



Chocolate-brown



Light red-brown



Pale brown



p. 12<sup>1</sup>/<sub>2</sub> Grey & green



p. 12<sup>3</sup>/<sub>4</sub> Grey & deep emerald-green



p. 12<sup>3</sup>/<sub>4</sub> x 13<sup>3</sup>/<sub>4</sub>



p. 12<sup>3</sup>/<sub>4</sub> x 13



Pale ultramarine & green



Pale ultramarine & deep green



Light brown & green



Light brown & blue-green

1938 - 1952. DEFINITIVES. (Continued)



p. 12 1/2 Grey & red-purple



Grey & red-claret



p. 12 3/4 x 13 3/4



Lake



Claret



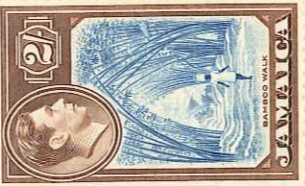
Green & deep purple-brown



Blue-green & purple-brown



Blue & chocolate-brown



Pale blue & brown



p. 14 x 13 3/4 Grey-blue & pale orange



Deep blue & orange



Deep blue & deep orange



p. 13 1/4 x 13 Blue-black & ochre



Deep blue & brownish orange



p. 14 x 13 3/4



p. 13 1/4 x 13 Myrtle-green



Light myrtle-green



PRINTED AT THE ROYAL MINT, LONDON AND PRINTED IN IRELAND  
\* PATENT OFFICE, LONDON AND BIRMINGHAM  
STANTON & CO. LTD. LONDON AND BIRMINGHAM

20th AUGUST 1945 - 46. NEW CONSTITUTION.

a. Perf 12½.



b. Perf 12¾ x 13¼.



c. Perf 13¼ x 13.



14th OCTOBER 1946. VICTORY.

a. Perf 13¾ x 14.



b. Perf 13¾ x 13¼.



1st DECEMBER 1948. SILVER WEDDING.



10th OCTOBER 1949. 75th ANNIVERSARY, U.P.U.



16th FEBRUARY 1951. INAUGURATION OF B. W. I. UNIVERSITY COLLEGE.



5th MARCH 1952. 1st CARIBBEAN SCOUT JAMBOREE.



# KENYA, UGANDA & TANGANYIKA

1

1938 - 54. DEFINITIVES.

i. Comb perf 13-25.



Maroon & bright mauve

Maroon & dull purple

ii. Comb perf 13 x 11-75.



Deep purple + black



Red-purple + black



Brown-purple + black



Reddish purple + black



Black + brown

Deep violet-blue + black

Deep blue + black

Black + dark brown

PRINTED AND MANUFACTURED BY THE EAST AFRICAN STATES PRINTING AND PUBLISHING CO. LTD. NAIROBI, KENYA

1938-54. DEFINITIVES.

iii. Comb perf 1325 x 13-75.



Black + chocolate-brown



Black + deep red-brown



Black + dark brown



Black + red-chocolate



Black + orange



Deep black + deep orange



Black + deep blue



Slate-black + deep blue



Black + violet-blue



Purple + blue



Purple + steel-blue

\* PRIVATE ACQUISITION NOT RECOMMENDED  
STANLEY GIBSON PRINTERS LTD. LONDON AND LEAMINGHOPE  
MILN AND PEARSON LTD. LONDON

1938-54. DEFINITIVES.

iv. Line perf 14.



Black + carmine

Intense black + deep carmine

(C)

(O)

v. Comb perf 13 x 12.5



With dot

Dot removed

Black + brown

Deep black + deep brown (clear impression)



vi. Line perf 12.5.

12th MAY 1937. CORONATION.



1941-42. STAMPS OF SOUTH AFRICA OVERPRINTED AND SURCHARGED.

Deep ultramarine

Bright blue



Frame size 18.5 x 22.5

18.25 x 22.25



Green & deep orange

Green & brownish orange

11th NOVEMBER 1946. VICTORY.



1st DECEMBER 1948. SILVER WEDDING.



10th OCTOBER 1949. 75th ANNIVERSARY, U. P. U.



1st FEBRUARY 1952. VISIT OF PRINCESS ELIZABETH AND THE DUKE OF EDINBURGH.



POSTAGE DUES.

1st MAY 1935. Perf 14.



1942 - 43. Perf 13.75 x 14.

1950. Perf 13.75 x 14. RE-ISSUE ON SMOOTH PAPER WITH BRIGHTER COLOURS.

# LEEWARD ISLANDS

1

12th MAY 1937. CORONATION.



1938-51. KEY PLATE DEFINITIVES.

a. SMALL FORMAT. Comb perf 13.75 x 14.



Brown O.



Light brown O.



Deep brown C.



Green O.



Blue-green O.



Scarlet O.  
Die A.



Scarlet O.  
Die B.



Carmine O.  
Die B.



Rose-scarlet  
Die B. O.



Pale pinkish  
scarlet. Die B. O.



Dull-red  
brown. O.



Deep red-  
brown. O.



Pale brown O.



Grey O.



Slate O.



Pale grey O.



Silver-grey O.



Blue O.



Light bright  
blue. O.



Pale blue O.



Deep  
orange C.



Orange O.

Pale orange O.  
(Thin paper)

1938-51. KEY PLATE DEFINITIVES. Cont.

a. SMALL FORMAT. (Cont)



Dull & red-purple C.

Dull & red-purple O.

Pale & bright purple O.

Deep & red-purple C.

Purple & bright purple C.



Black/Emerald C.

Black/Emerald O.

Grey & black/Emerald O.

Black & grey/Emerald O.



Purple & deep blue / Dull blue C.

Deep purple & deep blue / Pale blue O.



Green & red / Yellow C.

Green & scarlet / Pale yellow O.

Light green & deep red / Pale yellow C.

b. LARGE FORMAT. Comb perf 14 x 13-75.

Bluish green & red / Green C.



Deep purple & black / Crimson-red C.

Pale green & pale red / Green O.



Purple & black / Deep brick-red C.

Green & red / Green O.

Deep purple & black / Carmine-red C.

Deep green & red / Green O.

Purple & black / Deep carmine-red C.

1st NOVEMBER 1946. VICTORY.



2nd JANUARY 1949. SILVER WEDDING



1st JULY 1949 - 51. DEFINITIVES

a. Low values, colour change.



Grey



Slate



Slate

Scarlet

Vermilion



b. High value, perf 13-25 x 13 (Comb).

10th OCTOBER 1949. 75th ANNIVERSARY, U. P. U.



\* PHEASANT PUBLICATIONS LTD, 202 BAKER ST, LONDON, W.1  
KENTLEY GIBBONS PUBLICATIONS LTD, LONDON, W.1

16th FEBRUARY 1951. B. W. I. UNIVERSITY COLLEGE.



# MALAYA

# 1

## 1.

### 1. STRAITS SETTLEMENTS.

12th MAY 1937. CORONATION.



8th NOVEMBER 1937 - 6th OCTOBER 1941. DEFINITIVES. Chalk surfaced paper.

a. Die I. Printed in two operations.

*Scarcely used* *Sophus.*



Black /  
Emerald

Brownish grey  
& black / Green

Black / Green

Black &  
carmine / Blue

Black &  
scarlet / Blue

Green &  
carmine / Green

Green &  
scarlet / Green

b. Die II. Printed in one operation.



Green

Yellow-green

Green  
Ord paper.

Yellow-green  
Ord paper.



Ultramarine  
Ord paper.

Dp. ultramarine  
Ord paper.

10th OCTOBER 1945 - 10th OCTOBER 1948. STRAITS SETTLEMENTS OVERPRINTED B M A MALAYA.

a. Die I. Chalk surfaced paper.

Jet black	Black	Black. Thin paper.	Deep brown - purple	Slate-purple	Magenta	Reddish purple
					— Fluorescent aniline —	



Purple &  
deep carmine

Purple &  
deep scarlet

b. Die I. Uncoated (Substitute) paper.



Deep purple

Purple &  
dull purple

Purple

Fugitive ink —



Purple &  
carmine



Purple &  
scarlet



Black/Green



Purple &  
dull purple

Purple

Fugitive ink —

Black/Green  
Fluorescent  
aniline opt.



Black &  
carmine



Black &  
deep scarlet



Green &  
carmine - red



Green &  
scarlet



Purple &  
brown-orange

Jet black /  
Green.  
Dark red opt.

Red-purple &  
yellow-orange

c. Die II. Chalk surfaced paper.



Orange      Orange - yellow      Green      Blue - green

Slate      Slate - grey      Ultramarine      Blue

d. Die II. Uncoated (Substitute) paper.



Orange



Orange. White  
forehead



Orange  
Thin paper



Orange -  
yellow



Green



Blue - green

*Note seen*



Slate - grey



Slate  
Thin paper



Slate - grey  
White forehead



Rose



Red - scarlet



Deep red



Ultramarine  
Black opt.



Ultramarine  
Red opt



Dull ultra'ne  
Red opt

Steel - blue  
Red opt

The 8c scarlet value was issued only with the BMA MALAYA overprint.  
However, some unoverprinted examples leaked out.



4

4.

POSTAGE DUE STAMPS.

1938 - 1951. Comb perf 14.75 x 14.

Violet -  
maroon

Purple

Purple - violet

Yellow-green Emerald -  
green

Scarlet

Pink

Deep blue + Deep violet -  
blue

8th AUGUST 1951 - 21st AUGUST 1952. Line perf 14.

POSTAGE DUE STAMPS  
STAMPED BY THE POST OFFICE  
AND REVENUE DEPARTMENT

2. MALAYAN STATES.

1. JOHORE.

1940. ADDITIONAL DEFINITIVE TO 1922 - 36 SERIES.



FEBRUARY 1940. SULTAN SIR IBRAHIM.



Black & light blue



Black & pale ultramarine

1st DECEMBER 1948. SILVER WEDDING.



10th OCTOBER 1949. 75th ANNIVERSARY, U.P. U.



2nd MAY 1949 - 9th DECEMBER 1958. DEFINITIVES. SULTAN SIR IBRAHIM.



Orange

Yellow - orange  
22-1-52

Pale yellow  
9-12-58

Green

Light green

Yellow - green  
22-1-52



Brown

Light brown  
13-3-57

Magenta  
1-9-52

Bt. magenta  
18-8-53

Pale magenta  
10-12-57



Grey

Light grey  
22-1-52

Greenish grey  
16-12-57

1-9-52



Purple - red

Dp. purple-red  
24-5-56

Lt purple - red  
9-12-58

1-9-52

Bt. ultramarine

Blue  
22-1-52



Deep blue  
1-9-52

Bright blue  
23-3-55

Red - purple  
& orange

Dp. red-purple  
& orange  
22-2-51



Scarlet & red-purple  
4-9-55

Scarlet & dull lake-purple  
24-5-56

1-9-52

Black & violet - blue

Black & blue

Black & pale blue  
10-12-57

7

3.

1949 - 1958. DEFINITIVES. (Cont).



Ultramarine & Dp. red - purple



Blue & red - purple  
17 - 12 - 52



Pale blue & purple  
10 - 12 - 57



1st JANUARY 1938. POSTAGE DUE STAMPS.

2. KEDAH.

30th JUNE 1937. SULTAN ABDUL HAMID HALIMSHAH.



1938 & 1940. SHEAF OF CORN.

1938. Line perf 13.75.

1940. Line perf 14.

\* PHILATHEMIC AREA (L) NO. 262 (ACTS) - N.Y. PERFORMANCE  
STANTY (P) BROS. PUBLICATIONS LTD. LONDON AND BIRMINGHAM  
MADE AND PRINTED IN ENGLAND

1st DECEMBER 1948. SILVER WEDDING.



10th OCTOBER 1949. 75th ANNIVERSARY, U.P.U.



1st JUNE 1950 - 19th DECEMBER 1956. DEFINITIVES.

					
<b>Magenta</b> 1 - 9 - 52	<b>Bt. magenta.</b> 24 - 9 - 53	<b>Dark magenta.</b> 19 - 12 - 56	<b>Grey</b>	<b>Greenish grey.</b> 27 - 1 - 52	<b>Pale grey</b> 19 - 2 - 56
					
<b>Green</b> 1 - 9 - 52	<b>Deep green</b> 24 - 9 - 53	<b>Red - purple</b>	<b>Dp. red-purple.</b> 8 - 2 - 56	<b>1 - 9 - 52</b>	
					
<b>Blue</b> 1 - 9 - 52	<b>Deep blue</b> 8 - 2 - 56	<b>Deep purple &amp; orange</b>	<b>Red - purple &amp; orange</b> 27 - 6 - 51	<b>4 - 9 - 55</b>	<b>1 - 9 - 52</b>

\* PHILATELIC AIRMAIL NO. 102 (A.C.T.) NO. 28 (L.N.A.) LTD.  
STANTY GIBSONS PUBLICATIONS LTD. LONDON AND BIRMINGHAM  
MADE AND PRINTED IN ENGLAND

9

3.

1950 - 1956. DEFINITIVES (Cont).



**Black & pale blue**  
8 - 2 - 56

**Black & blue**  
27 - 11 - 52

**Black & violet-blue**



**Ultramarine & red-purple**

**Blue & deep red-purple**  
18 - 2 - 53

1.

3. KELANTAN.

JULY 1937 - MARCH 1940. DEFINITIVES. SULTAN ISMAIL.



1st DECEMBER 1948. SILVER WEDDING.



10th OCTOBER 1949. 75th ANNIVERSARY, U.P.U.



11th JULY 1951 - 27th MARCH 1956. DEFINITIVES. SULTAN TENGGU IBRAHIM.



Orange

Stop under C.  
almost missing

Orange-yellow  
11 - 5 - 55



Magenta  
1 - 9 - 52

Bt. magenta  
8 - 12 - 53

Light grey  
16 - 7 - 53

Greenish grey  
16 - 7 - 53

1 - 9 - 52



Red - purple

Claret  
8 - 12 - 53

1 - 9 - 52

1 - 9 - 52



Red-purple  
& orange

Dp. red-purple  
& orange  
8 - 12 - 53

Scarlet &  
red-purple  
1 - 9 - 52

Scarlet &  
lake-purple  
27 - 3 - 56

1 - 9 - 52

1951 - 1956. DEFINITIVES (Cont).



Ultramarine & dp. red-purple



Ultramarine & red-purple  
12-2-53



Green & brown



Green & sepia  
8-12-53

4. MALACCA.

1st DECEMBER 1948. SILVER WEDDING.



10th OCTOBER 1949. 75th ANNIVERSARY, U. P. U.



PRINTED AT THE ROYAL PRINTING WORKS, LONDON AND BANGKOK  
PRINTED AND BOUND IN ENGLAND  
STEVENS GIBSON PUBLICATIONS LTD. LONDON AND BANGKOK

1st MARCH 1949 - 13th NOVEMBER 1952. DEFINITIVES. KING GEORGE VI.



1 - 9 - 52



1 - 9 - 52

1 - 9 - 52



1 - 9 - 52

1 - 9 - 52

Dp. red-purple & orange  
13 - 11 - 52

1 - 9 - 52



Black & violet-blue

Black & blue  
13 - 11 - 52



Blue & dp. red-purple

Light blue & red-purple  
22 - 11 - 51

5. NEGRI SEMBILAN.

2nd DECEMBER 1935 - 18th DECEMBER 1941. ARMS OF NEGRI SEMBILAN.

i. Chalk surfaced paper.



ii. Ordinary (substitute) paper.



Ultramarine  
Dark ultramarine

1st DECEMBER 1948. SILVER WEDDING.



1st APRIL 1949 - 22nd FEBRUARY 1956. DEFINITIVES. ARMS OF NEGRI SEMBILAN.

Brown

Deep brown

Yellow-orange

Orange

Silver grey

Grey

Dp. green-grey

Greenish grey

Bt. Magenta

Magenta

Red - purple

Claret

Dp. red-purple

Red - purple & orange

Dp. red-purple & orange

Blue

Deep blue

Black & blue

Black & violet - blue

Scarlet & red - purple

Scarlet & purple

Blue & red - purple

Blue & red - purple

15

3.

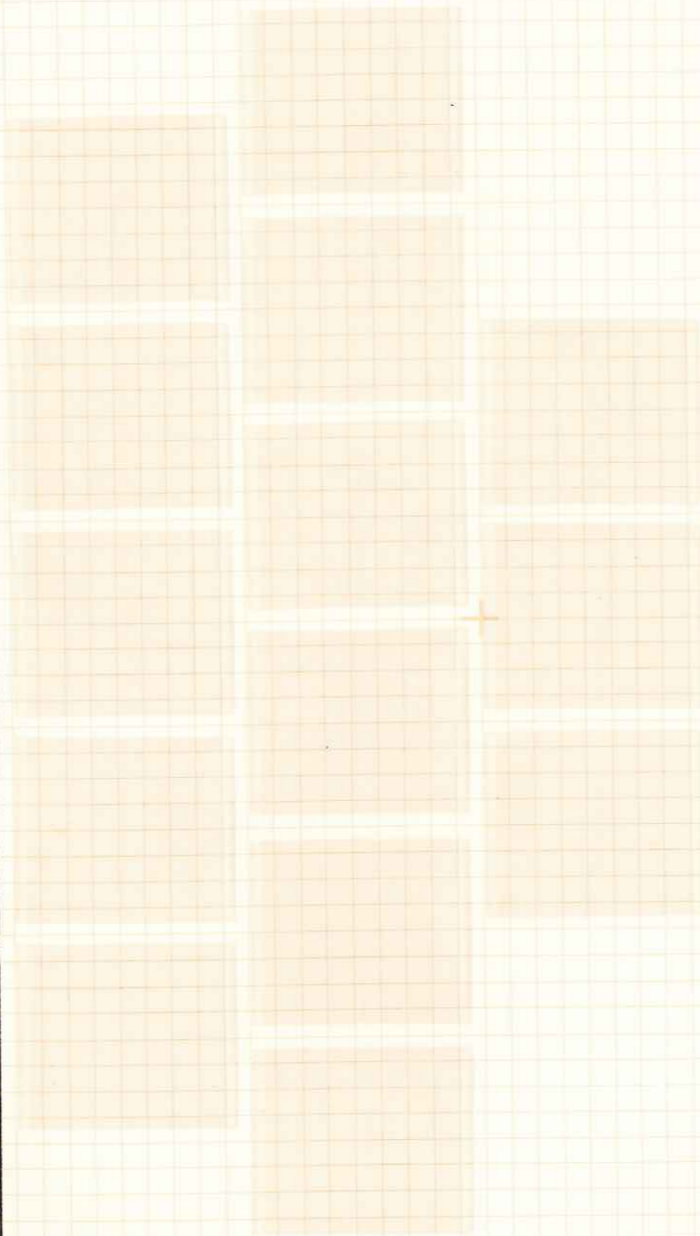
10th OCTOBER 1949. 75th ANNIVERSARY, U. P. U.



6. PAHANG.

1.

1935 - 1937. DEFINITIVES. SULTAN SIR ABU BAKAR Perf 14. Chalk surfaced paper.



1st JANUARY 1937 - 11th DECEMBER 1941. Perf 13.75 x 14.



Ord paper

1st DECEMBER 1948. SILVER WEDDING.



**7. PENANG.**

1st DECEMBER 1948. SILVER WEDDING.



21st FEBRUARY 1949 - 12th MAY 1954. DEFINITIVES.



Bright purple



Purple



Grey



Light grey



Brown



Deep brown

Bright purple



Purple



Grey



Light grey



Light grey



Red - purple & orange



Deep red-purple & orange



Bright purple



Purple



Grey



Light grey



Light grey



Red - purple & orange



Deep red-purple & orange



Blue & purple



Blue & purple



Blue & purple



Blue & purple



10th OCTOBER 1949. 75th ANNIVERSARY, U. P. U.

1st DECEMBER 1948. SILVER WEDDING.



10th OCTOBER 1949. 75th ANNIVERSARY, U. P. U.



17th AUGUST 1950 - 20th JUNE 1956. DEFINITIVES. SULTAN YUSSAF IZZUDDIN.



Magenta 1 - 9 - 52  
Bt. magenta 10 - 11 - 54  
Greenish grey 22 - 10 - 53  
Grey 22 - 10 - 53  
Silver-grey 20 - 6 - 56  
Yellow-green 15 - 11 - 51  
Dark brown 20 - 6 - 56  
Brown 22 - 10 - 53  
Yellow brown 20 - 6 - 56

1950 - 1956. DEFINITIVES. (Cont)



Purple



Claret  
20-6-56



1-9-52



1-9-52



Red-purple &  
& orange  
20-6-56



4-9-55



1-9-52



Black &  
violet-blue



Blue &  
red-purple



Blue &  
dp.red-purple  
20-6-56



9. PERLIS.

1st DECEMBER 1948. SILVER WEDDING.



10th OCTOBER 1949. 75th ANNIVERSARY, U. P. U.



26th MARCH 1951 - 11th MAY 1955. DEFINITIVES. RAJA SYED PUTRA.



1 - 9 - 52



1 - 9 - 52

Red-purple

Dp, red-purple

1 - 9 - 52

11-5-55



1 - 9 - 52

4 - 9 - 56

1 - 9 - 52



1.

10. SELANGOR.

1935 - 1941. DEFINITIVES. Chalk surfaced paper. Perf 13.75 x 14.

a. 1935 - 1936. 1c - 50c. Mosque at Palace, Klang.  
\$1 - \$5. Sultan Sulaiman.



b. 1937 - 1941. Sultan Hisamud-din Alam Shah on \$1 & \$2.



p. 14 x 14-5. Ord.

Ord paper.

Yellow-green

Yellow-green. O.

Green

Blue-green. O.



Ultramarine. O.

Dk. ultramarine. O

1st DECEMBER 1948. SILVER WEDDING.



12th DECEMBER 1949 - 17th AUGUST 1956. DEFINITIVES. SULTAN HISAMUD - DIN ALAM SHAH.



Black & violet - blue

1 - 11 - 52

Black & blue

1 - 11 - 52

1 - 9 - 52

17 - 9 - 53



Grey

26 - 9 - 51

Greenish grey

13 - 1 - 52

Green

17 - 3 - 53



Red - purple

17 - 8 - 56

Claret

1 - 9 - 52



1 - 9 - 52

4 - 9 - 55

1 - 9 - 52



Black & blue

1 - 11 - 52

Ultramarine & red-purple

17 - 8 - 55

Ultramarine & dp. red-purple

17 - 8 - 55

3.

10th OCTOBER 1949. 75th ANNIVERSARY, U. P. U.



1.

11. SINGAPORE.

1st SEPTEMBER 1948. DEFINITIVES. KING GEORGE VI. Perf 13.75 x 14. \* 1st OCTOBER 1948.



\* 25-10-48

1st DECEMBER 1948. SILVER WEDDING.



1949 - 1955. DEFINITIVES. KING GEORGE VI. Perf 17.5 x 18.



21-5-52 Orange 31-10-49 Orange-yellow 10-12-52 Brown 1-7-49 Deep brown 24-5-51 Magenta 1-9-52 Bt. magenta 19-11-53



Greenish grey 10-12-52 Grey 10-11-53 Yellow-green 1-9-52 Green 25-8-53



Red-purple 9-2-50 Pale red-purple 10-12-52 Dp. red-purple 1-9-52 Dp. red-purple 21-4-55



31-10-49 Blue 1-9-52 Violet-blue 25-8-53 Black & blue 21-5-52 Blue & red-purple 31-10-49 Blue 1-9-52



Black & violet-blue 9-2-50 Blue & red-purple 31-10-49 Blue & black 21-5-52 Dp. red-purple & orange 21-4-55 Red-purple & orange 9-2-50 Blue & dp. red-purple 19-11-53

10th OCTOBER 1949. 75th ANNIVERSARY. U. P. U.



1.

12. TRENGGANU.

1924 - 1938. DEFINITIVES. SULTAN SULEIMAN.

1st MAY 1941. SURCHARGED DEFINITIVES.

1st DECEMBER 1948. SILVER WEDDING.

10th OCTOBER 1949. 75th ANNIVERSARY, U. P. U.



27th DECEMBER 1949 - 27th MARCH 1957. DEFINITIVES. SULTAN ISMAIL.



Brown 21-11-55  
Pale brown 27-3-57



Magenta 1-9-52

Bt. magenta 27-3-57

Greenish grey

Pale grey 27-3-57

Yellow-green 1-9-52

Green 11-8-53



Dp. red-purple

Red-purple 24-4-51

Pale purple 22-5-53

1-9-52

1-9-52



Scarlet & dp. red-purple 4-9-55

Scarlet & red-purple 27-6-56

1-9-52

Black & violet-blue 25-2-53  
Black & blue 25-2-53



Ultramarine & dp. red-purple

Blue & red-purple 25-2-53

10th AUGUST 1937. POSTAGE DUE STAMPS.

