

**ARTISTIC TREASURES FROM THE ISRAEL MUSEUM**  
*SIX ORIGINAL SKETCHES FROM THE MUSEUM COLLECTION*

When the Israel Museum opened in 1966 the Israeli Postal Service issued a special series of stamps to commemorate the event. These stamps consist of six representations of archeological highlights in the museum's famed collection. The most prominent stamp is a reproduction of the renowned second century synagogue stone menorah found in Tiberius.



The artist whose drawings are offered here and were the basis of these stamps is Oswald Adler of Tel Aviv. A talented graphic designer of Hungarian descent, Adler is known for his fine works of art. The drawings are pen and paper water color sketches, each one signed by the artist with accompanying autographic pencil notes.

In preparing the designs for the stamps Adler was permitted by the museum to make his own selection of the subject matter. Adler chose to emphasize the museum's archeological treasures. In addition to the menorah, the other five objects are a fifth century B.C.E. Persian gold drinking horn; a fifth B.C.E. century bronze panther figurine; a fifth century B.C.E. miniature gold capital; a sixth-fourth century B.C.E. gold earring; and a ninth century B.C.E. ivory sphinx.

Original artist sketches such as these are rare and prized by collectors. It is most unusual to find a complete set in perfect condition. Each sketch is accompanied by a numbered sheet of twelve stamps in pristine condition. These sketches were retained by the artist, until his death in 2005 and were subsequently sold by the family.



reddish red  
black

V. Adlin

\* 569989

280666



פסיל נמר - ברונזה  
 מאה א' לפסה"נ - מאה א' לסה"נ - עבדת  
 BRONZE PANTHER FIGURINE  
 FIRST CENT. B.C.E. - FIRST CENT. C.E. AVDAT

פסיל נמר - ברונזה  
 מאה א' לפסה"נ - מאה א' לסה"נ - עבדת  
 BRONZE PANTHER FIGURINE  
 FIRST CENT. B.C.E. - FIRST CENT. C.E. AVDAT

פסיל נמר - ברונזה  
 מאה א' לפסה"נ - מאה א' לסה"נ - עבדת  
 BRONZE PANTHER FIGURINE  
 FIRST CENT. B.C.E. - FIRST CENT. C.E. AVDAT

פסיל נמר - ברונזה  
 מאה א' לפסה"נ - מאה א' לסה"נ - עבדת  
 BRONZE PANTHER FIGURINE  
 FIRST CENT. B.C.E. - FIRST CENT. C.E. AVDAT



O. Adler

Sierra, California, 1860

\* 434302

280666



מנורה מבית כנסת - אבן  
מאה ב' לסה"נ - טבריה  
SYNAGOGUE STONE MENORA  
SECOND CENT. C.E. · TIBERIAS

מנורה מבית כנסת - אבן  
מאה ב' לסה"נ - טבריה  
SYNAGOGUE STONE MENORA  
SECOND CENT. C.E. · TIBERIAS

מנורה מבית כנסת - אבן  
מאה ב' לסה"נ - טבריה  
SYNAGOGUE STONE MENORA  
SECOND CENT. C.E. · TIBERIAS

מנורה מבית כנסת - אבן  
מאה ב' לסה"נ - טבריה  
SYNAGOGUE STONE MENORA  
SECOND CENT. C.E. · TIBERIAS



Naples yellow  
black

O Adler

\* 508870

280666



0.40 ישראל



0.40 ישראל



0.40 ישראל



0.40 ישראל



0.40 ישראל



0.40 ישראל



0.40 ישראל



0.40 ישראל



0.40 ישראל



0.40 ישראל



0.40 ישראל



0.40 ישראל

כרוב שנהב  
מאה ט' לפסה"נ - פניקי  
PHOENICIAN IVORY SPHINX  
NINTH CENT. B.C.E.

כרוב שנהב  
מאה ט' לפסה"נ - פניקי  
PHOENICIAN IVORY SPHINX  
NINTH CENT. B.C.E.

כרוב שנהב  
מאה ט' לפסה"נ - פניקי  
PHOENICIAN IVORY SPHINX  
NINTH CENT. B.C.E.

כרוב שנהב  
מאה ט' לפסה"נ - פניקי  
PHOENICIAN IVORY SPHINX  
NINTH CENT. B.C.E.

179

\* 228450

280666



0.40 ישראל



0.40 ישראל



0.40 ישראל



0.40 ישראל



0.40 ישראל



0.40 ישראל



0.40 ישראל



0.40 ישראל



0.40 ישראל



0.40 ישראל



0.40 ישראל



0.40 ישראל

כרוב שנהב  
מאה ט' לפסה"נ - פניקי  
PHOENICIAN IVORY SPHINX  
NINTH CENT. B.C.E.

כרוב שנהב  
מאה ט' לפסה"נ - פניקי  
PHOENICIAN IVORY SPHINX  
NINTH CENT. B.C.E.

כרוב שנהב  
מאה ט' לפסה"נ - פניקי  
PHOENICIAN IVORY SPHINX  
NINTH CENT. B.C.E.

כרוב שנהב  
מאה ט' לפסה"נ - פניקי  
PHOENICIAN IVORY SPHINX  
NINTH CENT. B.C.E.

179



Cadmium orange  
black ochre  
+ hooker's green

V. Adh.

\* 13719

280666



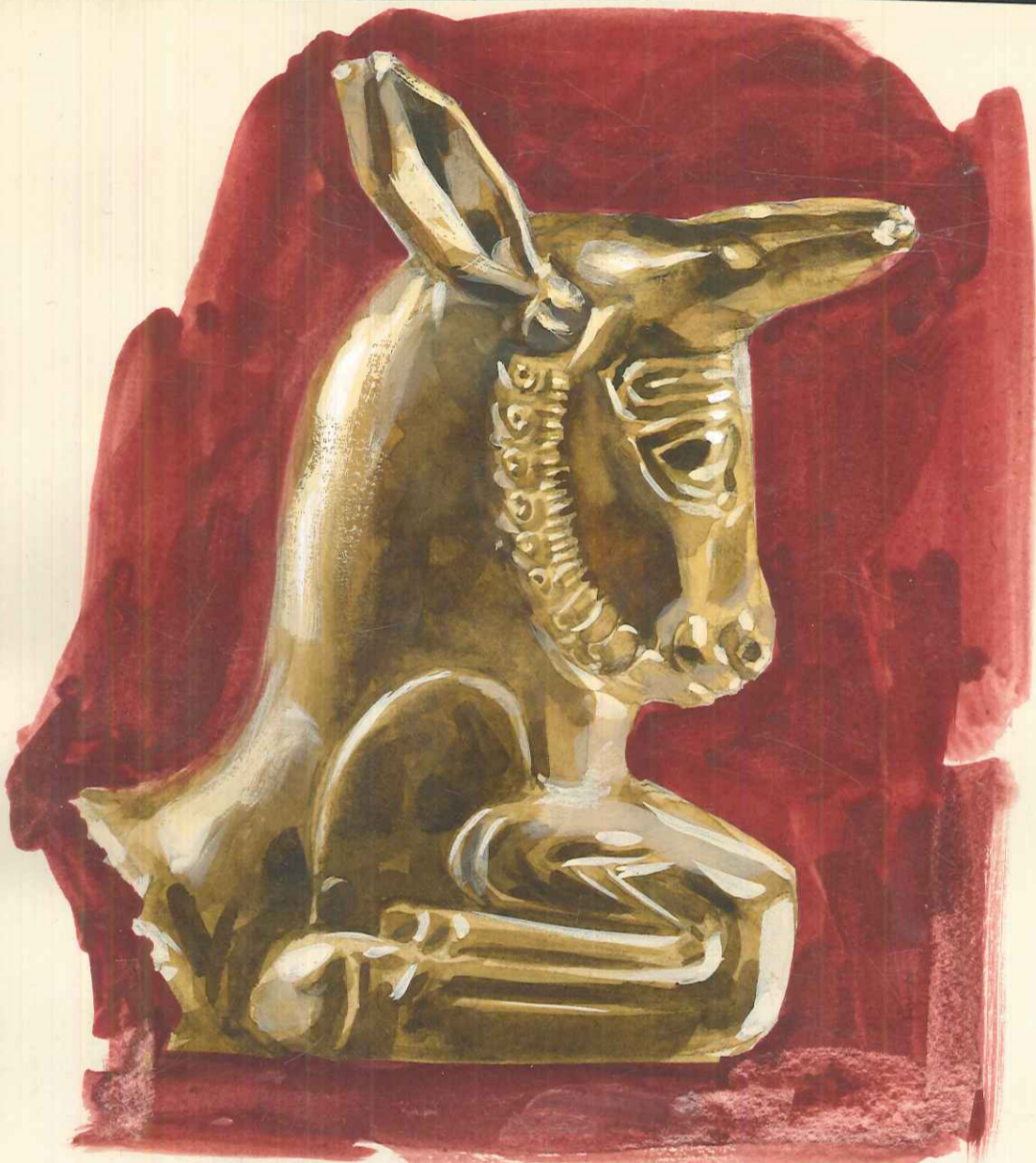
עגיל זהב  
מאות ו'-ד' לפסה"נ . אשדוד  
GOLD EARRING  
SIXTH-FOURTH CENT. B.C.E. · ASHDOD

עגיל זהב  
מאות ו'-ד' לפסה"נ . אשדוד  
GOLD EARRING  
SIXTH-FOURTH CENT. B.C.E. · ASHDOD

עגיל זהב  
מאות ו'-ד' לפסה"נ . אשדוד  
GOLD EARRING  
SIXTH-FOURTH CENT. B.C.E. · ASHDOD

עגיל זהב  
מאות ו'-ד' לפסה"נ . אשדוד  
GOLD EARRING  
SIXTH-FOURTH CENT. B.C.E. · ASHDOD

180



indigo yellow black  
orange.

O Adlin

\* 444120

280666



181

כותרת זעירה - זהב  
מאה ה' לפסה"נ - פרס  
MINIATURE GOLD CAPITAL  
FIFTH CENT. B.C.E. - PERSIA

כותרת זעירה - זהב  
מאה ה' לפסה"נ - פרס  
MINIATURE GOLD CAPITAL  
FIFTH CENT. B.C.E. - PERSIA

כותרת זעירה - זהב  
מאה ה' לפסה"נ - פרס  
MINIATURE GOLD CAPITAL  
FIFTH CENT. B.C.E. - PERSIA

כותרת זעירה - זהב  
מאה ה' לפסה"נ - פרס  
MINIATURE GOLD CAPITAL  
FIFTH CENT. B.C.E. - PERSIA



cadmium orange  
black  
indigo

O. Adley

120985

070866



182

קרן שתייה - זהב  
מאה ה' לפסה"נ - פרס  
GOLD DRINKING HORN  
FIFTH CENT. B.C.E. - PERSIA

קרן שתייה - זהב  
מאה ה' לפסה"נ - פרס  
GOLD DRINKING HORN  
FIFTH CENT. B.C.E. - PERSIA

קרן שתייה - זהב  
מאה ה' לפסה"נ - פרס  
GOLD DRINKING HORN  
FIFTH CENT. B.C.E. - PERSIA

קרן שתייה - זהב  
מאה ה' לפסה"נ - פרס  
GOLD DRINKING HORN  
FIFTH CENT. B.C.E. - PERSIA

**ARTISTIC TREASURES FROM THE ISRAEL MUSEUM**  
*SIX ORIGINAL SKETCHES FROM THE MUSEUM COLLECTION*

When the Israel Museum opened in 1966 the Israeli Postal Service issued a special series of stamps to commemorate the event. These stamps consist of six representations of archeological highlights in the museum's famed collection. The most prominent stamp is a reproduction of the renowned second century synagogue stone menorah found in Tiberius.



The artist whose drawings are offered here and were the basis of these stamps is Oswald Adler of Tel Aviv. A talented graphic designer of Hungarian descent, Adler is known for his fine works of art. The drawings are pen and paper water color sketches, each one signed by the artist with accompanying autographic pencil notes.

In preparing the designs for the stamps Adler was permitted by the museum to make his own selection of the subject matter. Adler chose to emphasize the museum's archeological treasures. In addition to the menorah, the other five objects are a fifth century B.C.E. Persian gold drinking horn; a fifth B.C.E. century bronze panther figurine; a fifth century B.C.E. miniature gold capital; a sixth-fourth century B.C.E. gold earring; and a ninth century B.C.E. ivory sphinx.

Original artist sketches such as these are rare and prized by collectors. It is most unusual to find a complete set in perfect condition. Each sketch is accompanied by a numbered sheet of twelve stamps in pristine condition. These sketches were retained by the artist, until his death in 2005 and were subsequently sold by the family.